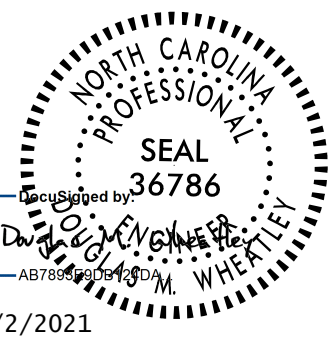
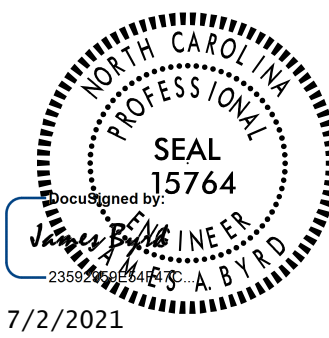
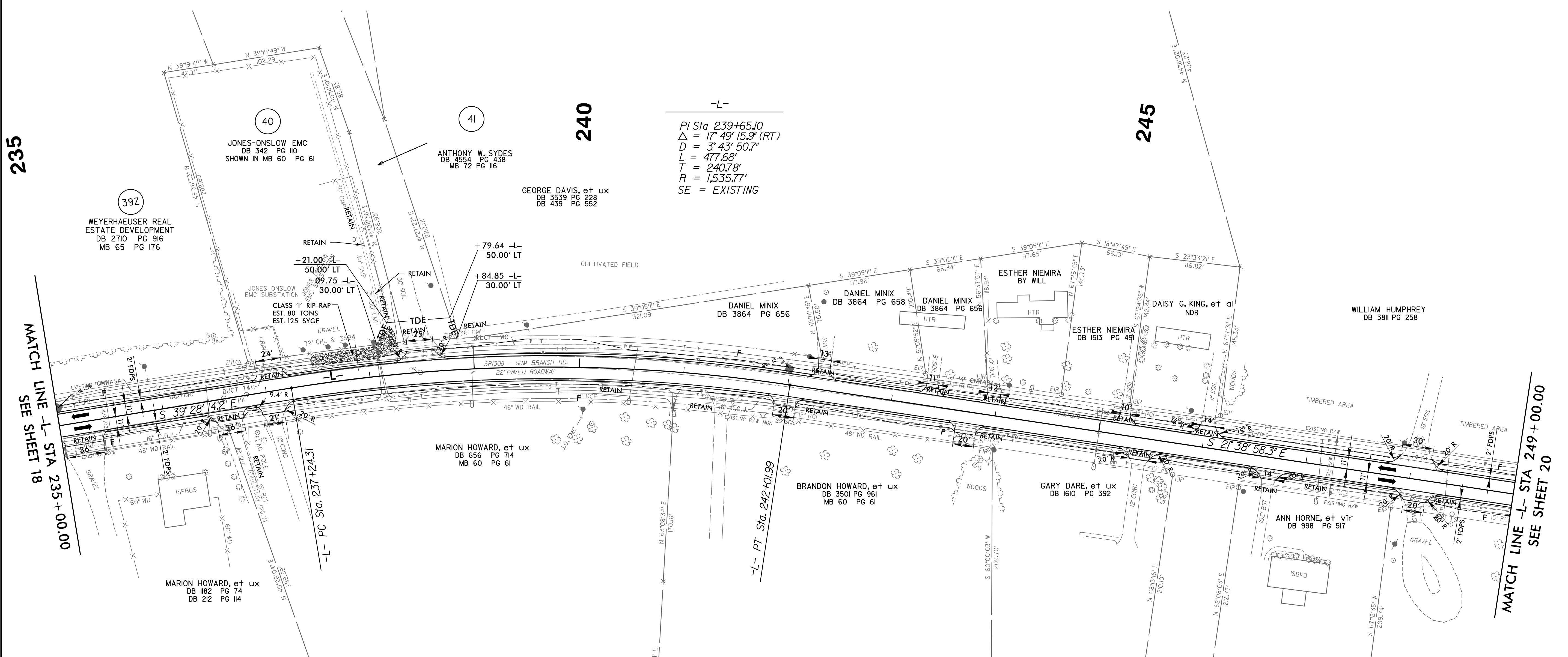
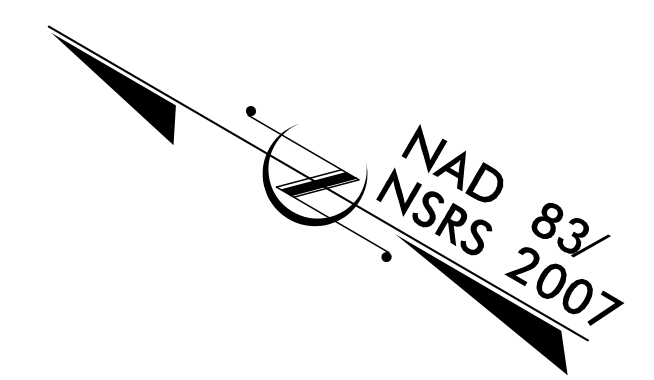


8/17/99

PROJECT REFERENCE NO. U-4906	SHEET NO. 19
RW SHEET NO.	
ROADWAY DESIGN ENGINEER	HYDRAULICS ENGINEER
 7/2/2021	 7/2/2021
DOCUMENT NOT CONSIDERED FINAL UNLESS ALL SIGNATURES COMPLETED	



235

240

245

MATCH LINE -L- STA 235 + 00.00
 SEE SHEET 18

MATCH LINE -L- STA 249 + 00.00
 SEE SHEET 20

DESIGN EXCEPTION REQUESTED FOR LANE WIDTHS (11') AND USABLE SHOULDER (4' MINIMUM)
 NOTE: ALL DRIVEWAY RADII ARE 10' UNLESS OTHERWISE NOTED ON PLANS

FOR -L- PROFILE, SEE SHEET 34

15-JUN-2021 13:23
 Regdway\Pro\144906_r.dwg_psh19.dgn
 MHP