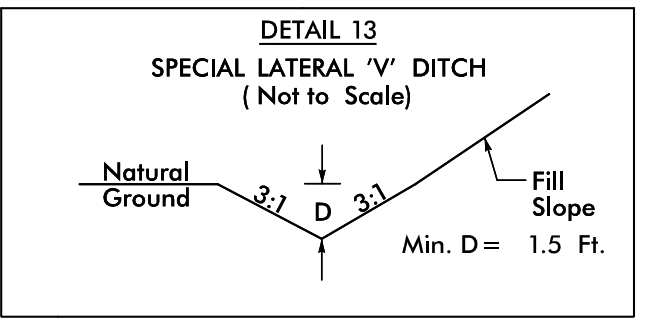
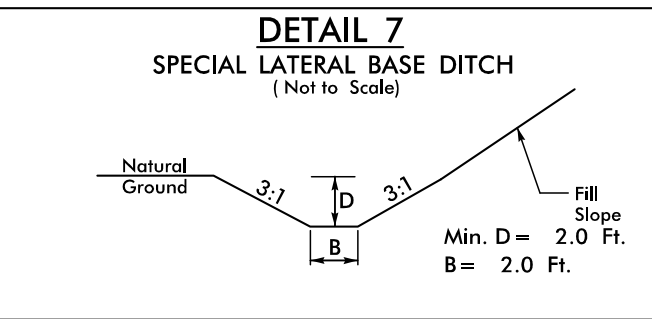
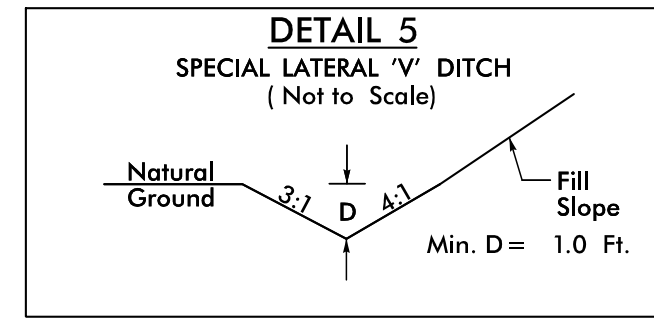
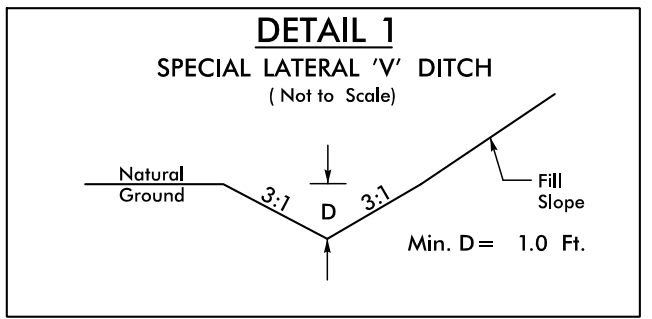
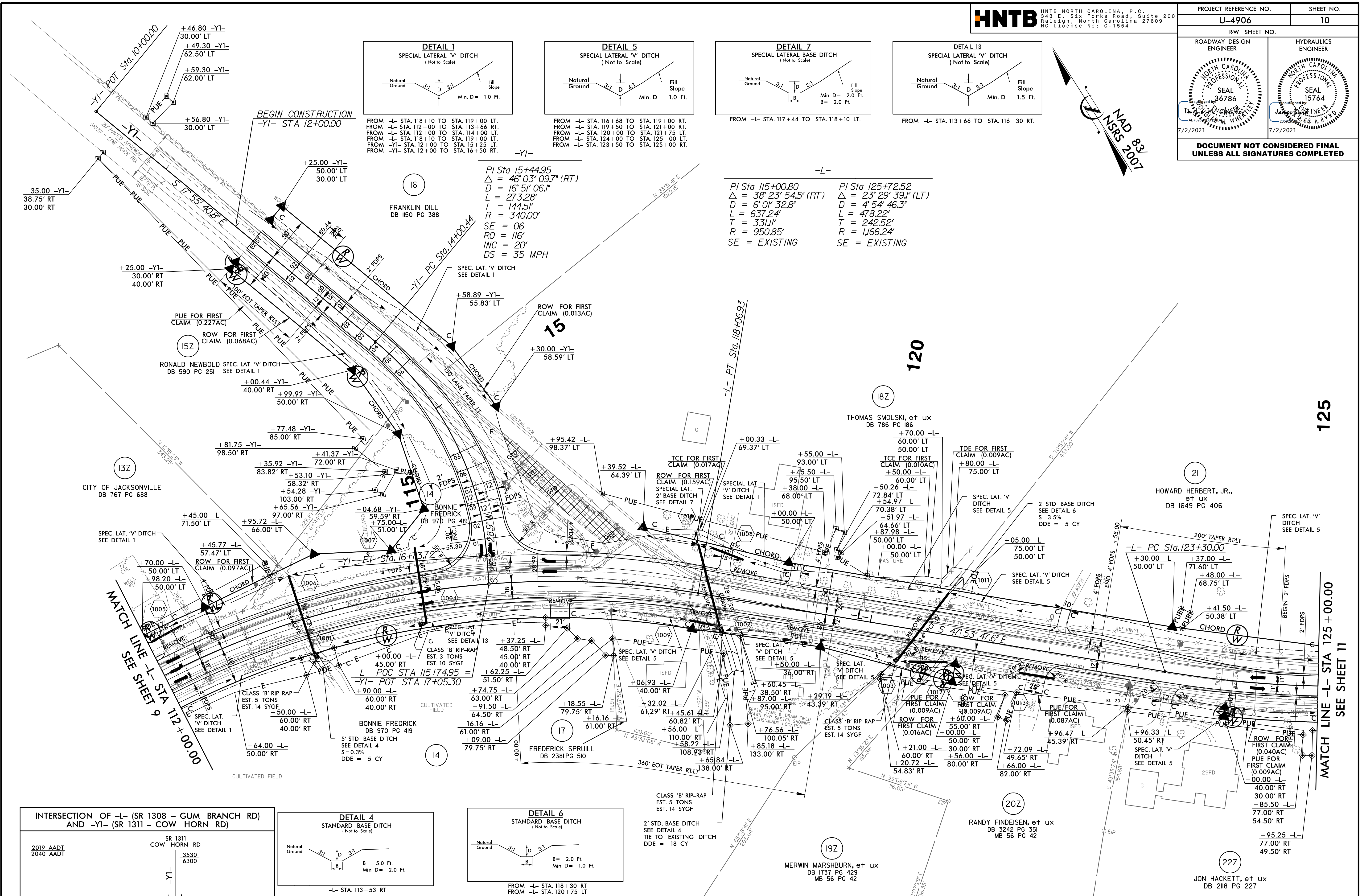
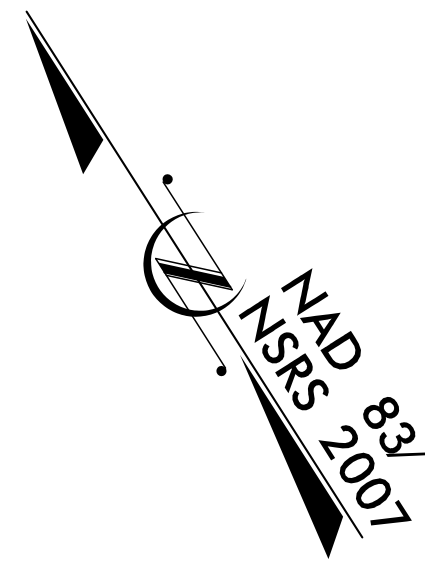


5/14/2021

PROJECT REFERENCE NO. U-4906	SHEET NO. 10
RW SHEET NO.	HYDRAULICS ENGINEER
ROADWAY DESIGN ENGINEER	SEAL 36786
	SEAL 15764
7/2/2021	7/2/2021
DOCUMENT NOT CONSIDERED FINAL UNLESS ALL SIGNATURES COMPLETED	



FROM -L- STA. 118+10 TO STA. 119+00 LT.
FROM -L- STA. 112+00 TO STA. 113+66 RT.
FROM -L- STA. 118+10 TO STA. 119+00 LT.
FROM -L- STA. 118+10 TO STA. 119+00 LT.
FROM -YI- STA. 12+00 TO STA. 15+25 LT.
FROM -YI- STA. 12+00 TO STA. 16+50 RT.

FROM -L- STA. 116+68 TO STA. 119+00 RT.
FROM -L- STA. 119+50 TO STA. 121+00 RT.
FROM -L- STA. 120+00 TO STA. 121+75 LT.
FROM -L- STA. 124+00 TO STA. 125+00 LT.
FROM -L- STA. 123+50 TO STA. 125+00 RT.

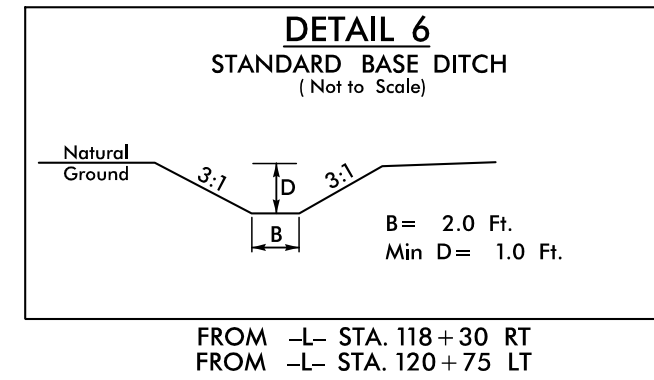
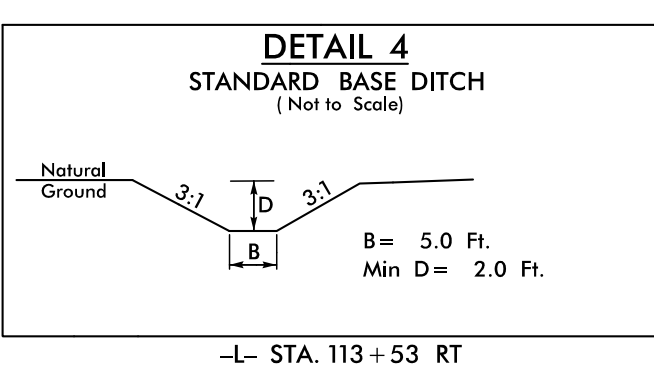
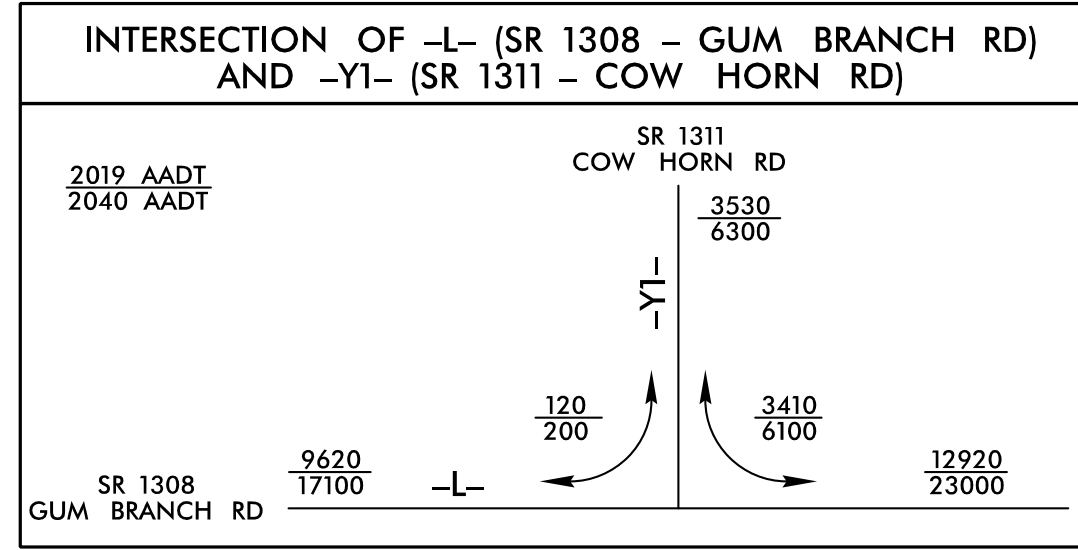
FROM -L- STA. 117+44 TO STA. 118+10 LT.

FROM -L- STA. 113+66 TO STA. 116+30 RT.

PI Sta 15+44.95
 $\Delta = 46^{\circ}03'09.7''$ (RT)
 $D = 16^{\circ}51'06.1''$
 $L = 273.28'$
 $T = 144.51'$
 $R = 340.00'$
 $SE = 06$
 $RO = 116^{\circ}$
 $INC = 20^{\circ}$
 $DS = 35$ MPH

-L-
PI Sta 115+00.80
 $\Delta = 38^{\circ}23'54.5''$ (RT)
 $D = 6^{\circ}01'32.8''$
 $L = 637.24'$
 $T = 331.11'$
 $R = 950.85'$
 $SE = EXISTING$

PI Sta 125+72.52
 $\Delta = 23^{\circ}29'39.1''$ (LT)
 $D = 4^{\circ}54'46.3''$
 $L = 478.22'$
 $T = 242.52'$
 $R = 1,166.24'$
 $SE = EXISTING$



DESIGN EXCEPTION REQUESTED FOR LANE WIDTHS (11') AND USABLE SHOULDER (4' MINIMUM)
NOTE: ALL DRIVEWAY RADII ARE 10' UNLESS OTHERWISE NOTED

FOR -L- PROFILE, SEE SHEETS 29 AND 30
FOR -YI- PROFILE, SEE SHEET 38

15-JUN-2021 13:23
Regway Pro\4906_rdj_psh10.dgn