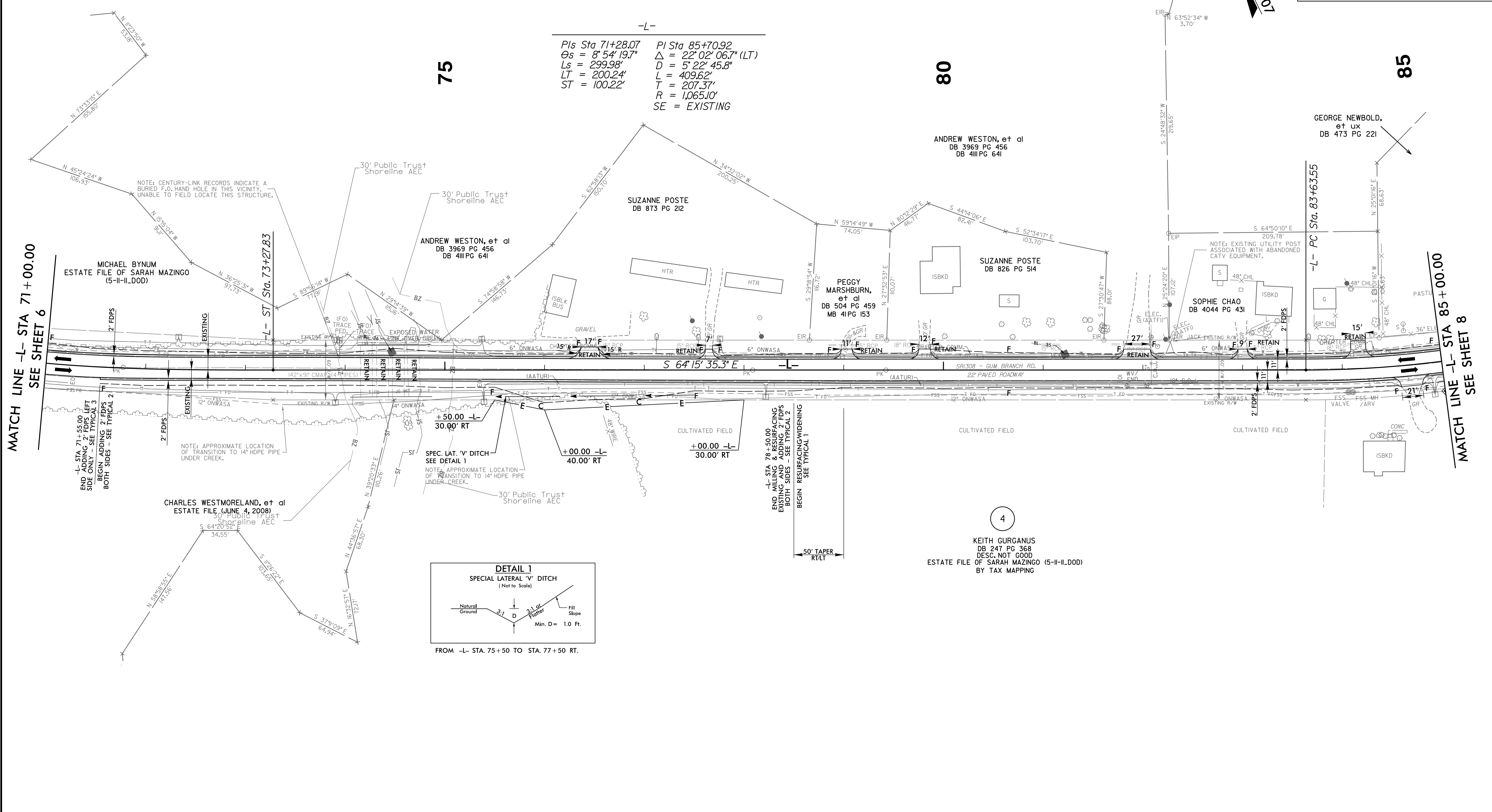
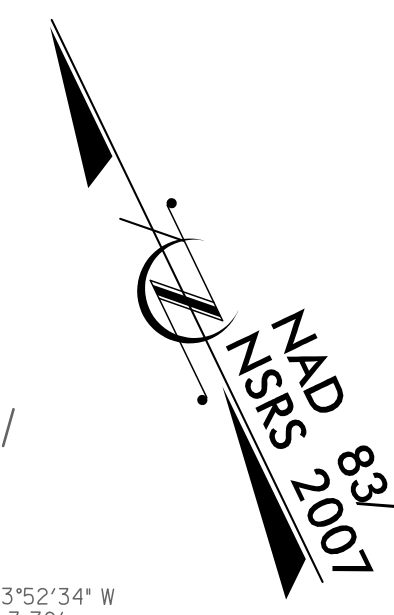


5/14/2021



PROJECT REFERENCE NO. U-4906		SHEET NO. 7
RW SHEET NO.		
ROADWAY DESIGN ENGINEER	HYDRAULICS ENGINEER	
DOCUMENT NOT CONSIDERED FINAL UNLESS ALL SIGNATURES COMPLETED		

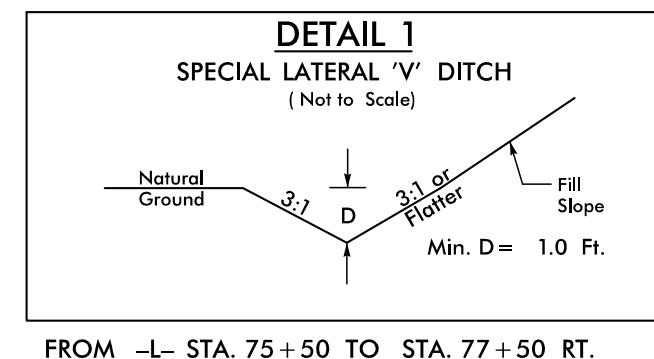


-L-

<i>PIs Sta 71+28.07</i>	<i>PI Sta 85+70.92</i>
<i>θs = 8° 54' 19.7"</i>	<i>Δ = 22° 02' 06.7" (LT)</i>
<i>Ls = 299.98'</i>	<i>D = 5° 22' 45.8"</i>
<i>LT = 200.24'</i>	<i>L = 409.62'</i>
<i>ST = 100.22'</i>	<i>T = 207.37'</i>
	<i>R = 1,065.00'</i>
	<i>SE = EXISTING</i>

MATCH LINE -L- STA 71+00.00 SEE SHEET 6

MATCH LINE -L- STA 85+00.00 SEE SHEET 8



DESIGN EXCEPTION REQUESTED FOR LANE WIDTHS (11') AND USABLE SHOULDER (4' MINIMUM)
NOTE: ALL DRIVEWAY RADII ARE 10' UNLESS OTHERWISE NOTED

FOR -L- PROFILE, SEE SHEET 28

18-AUG-2021 13:35 Roadway\Proj\U4906_rdy_psh7.dgn HNTB