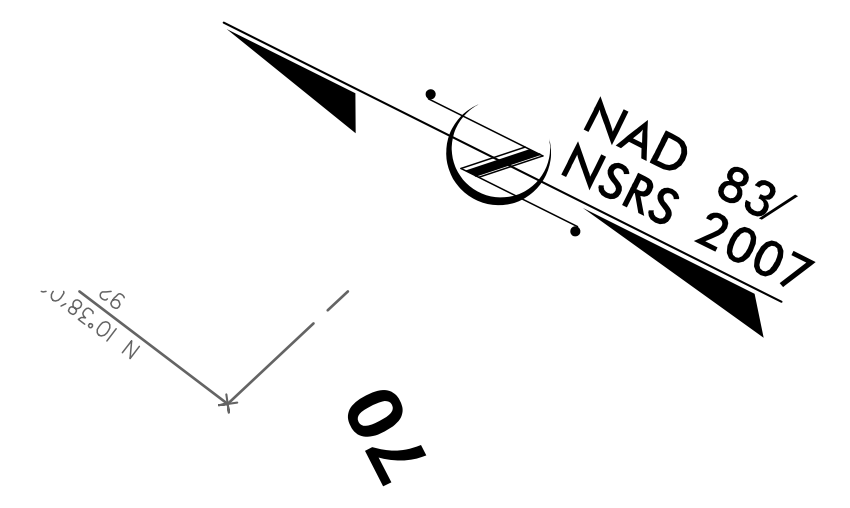


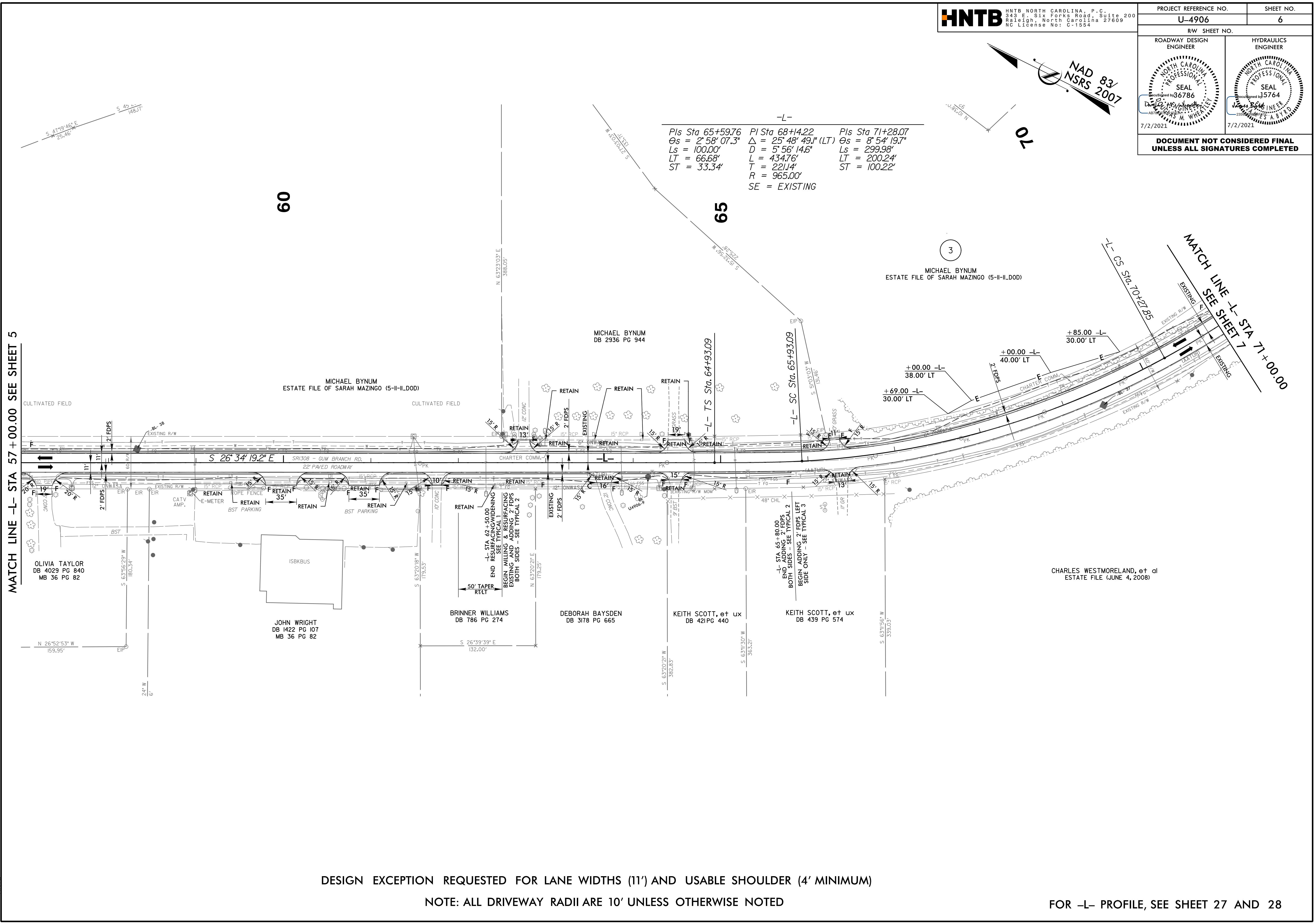
5/14/2022

HNTB HNTB NORTH CAROLINA, P.C.
 343 E. Six Forks Road, Suite 200
 Raleigh, North Carolina 27609
 NC License No: C-1524

PROJECT REFERENCE NO. U-4906	SHEET NO. 6
RW SHEET NO.	
ROADWAY DESIGN ENGINEER	HYDRAULICS ENGINEER
<p>DOCUMENT NOT CONSIDERED FINAL UNLESS ALL SIGNATURES COMPLETED</p>	



Pls Sta 65+59.76 θs = 2° 58' 07.3" Ls = 100.00' LT = 66.68' ST = 33.34'	Pls Sta 68+14.22 Δ = 25° 48' 49.1" (LT) D = 5° 56' 14.6" L = 434.76' T = 221.14' R = 965.00' SE = EXISTING	Pls Sta 71+28.07 θs = 8° 54' 19.7" Ls = 299.98' LT = 200.24' ST = 100.22'
---	--	---



MATCH LINE -L- STA 57+00.00 SEE SHEET 5

MATCH LINE -L- STA 71+00.00 SEE SHEET 7

DESIGN EXCEPTION REQUESTED FOR LANE WIDTHS (11') AND USABLE SHOULDER (4' MINIMUM)

NOTE: ALL DRIVEWAY RADII ARE 10' UNLESS OTHERWISE NOTED

FOR -L- PROFILE, SEE SHEET 27 AND 28

15-JUN-2022 13:22
\\rogsway\proj\4906_rdy_psh6.dgn
HNTB