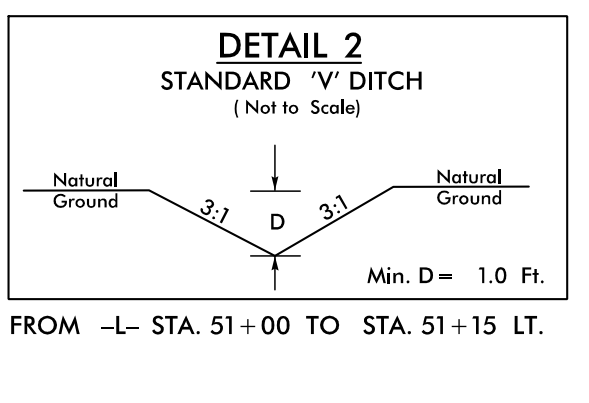
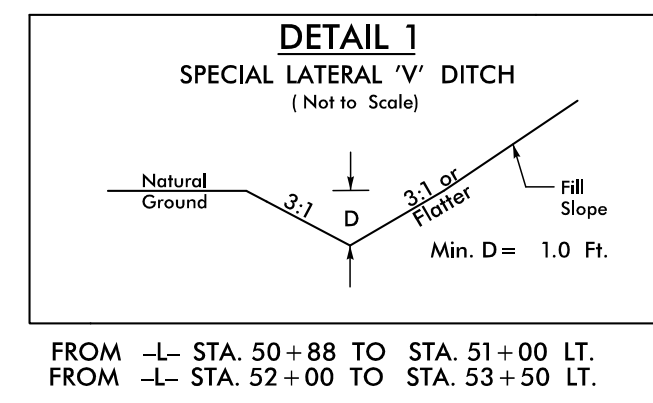
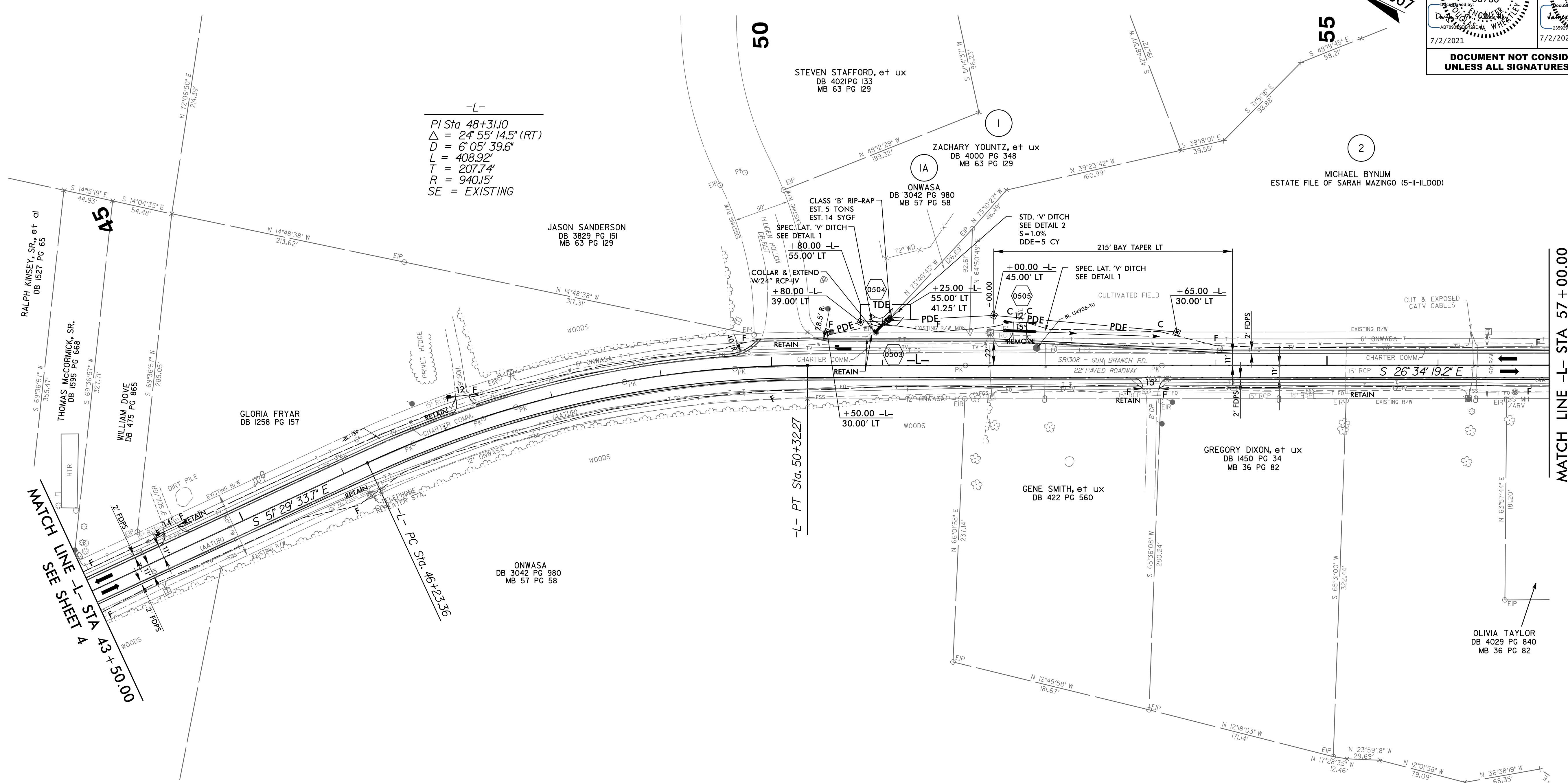
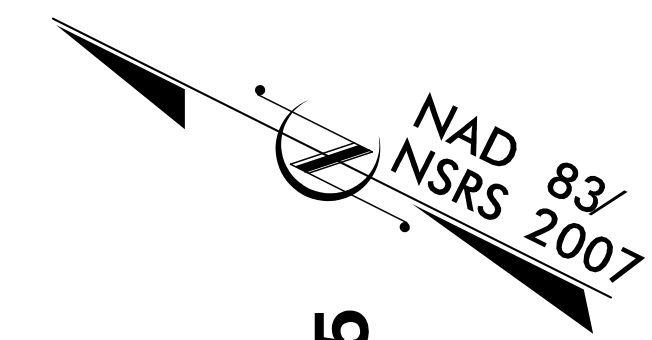


5/14/2021

PROJECT REFERENCE NO. U-4906		SHEET NO. 5
RW SHEET NO.		
ROADWAY DESIGN ENGINEER	HYDRAULICS ENGINEER	
DOCUMENT NOT CONSIDERED FINAL UNLESS ALL SIGNATURES COMPLETED		



DESIGN EXCEPTION REQUESTED FOR LANE WIDTHS (11') AND USABLE SHOULDER (4' MINIMUM)

NOTE: ALL DRIVEWAY RADII ARE 10' UNLESS OTHERWISE NOTED

FOR -L- PROFILE, SEE SHEET 27

15-JUN-2021 13:22
 \Roadway\Proj\U4906_rdy_psh5.dgn
 HNTB