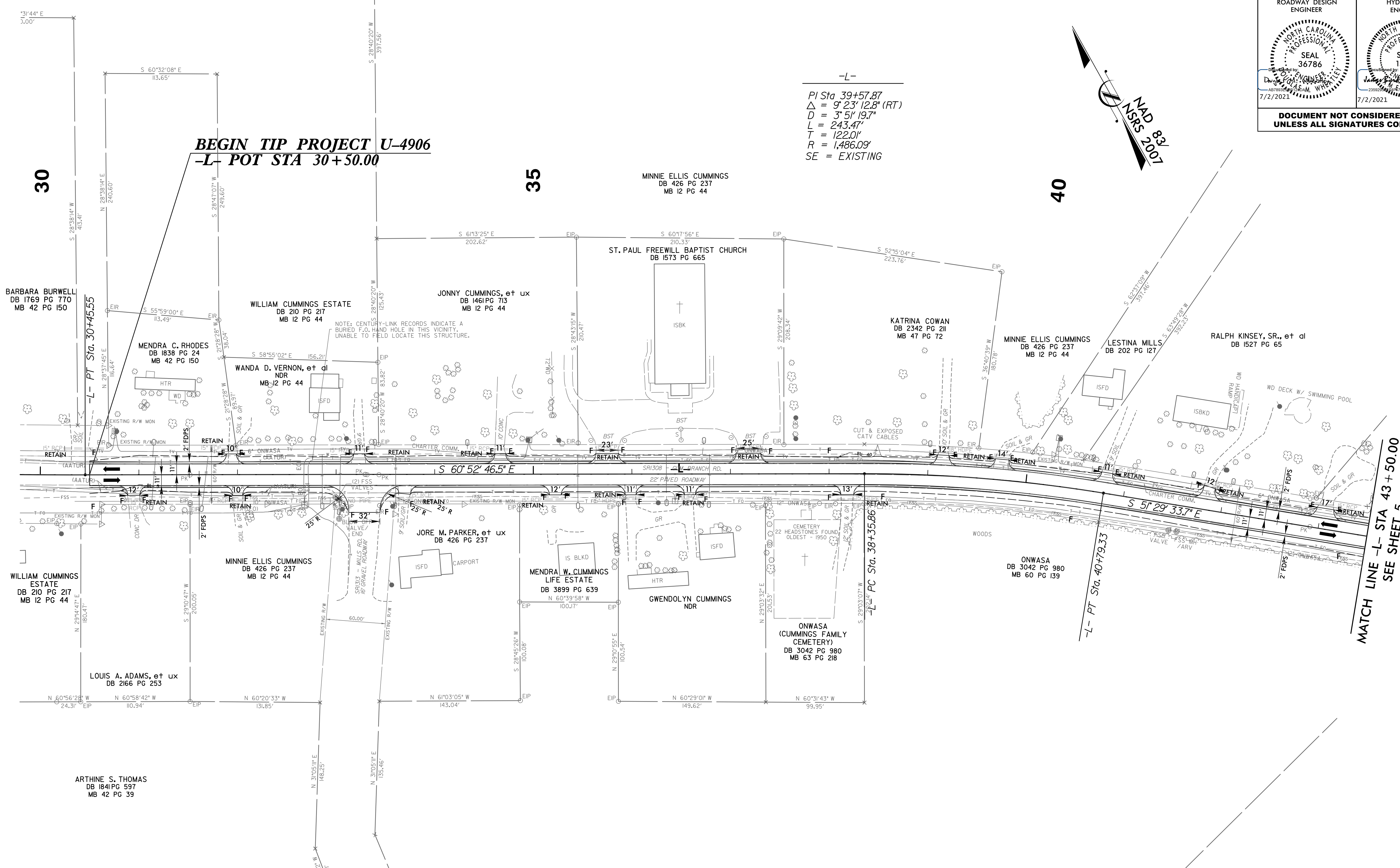


5/14/2021

PROJECT REFERENCE NO. U-4906		SHEET NO. 4
RW SHEET NO.		
ROADWAY DESIGN ENGINEER	HYDRAULICS ENGINEER	
DOCUMENT NOT CONSIDERED FINAL UNLESS ALL SIGNATURES COMPLETED		



-L-
 PI Sta 39+57.87
 $\Delta = 9' 23' 12.8''$ (RT)
 $D = 3' 5' 19.7''$
 $L = 243.47'$
 $T = 122.01'$
 $R = 1,486.09'$
 SE = EXISTING

BEGIN TIP PROJECT U-4906
-L- POT STA 30+50.00

MATCH LINE -L- STA 43+50.00
SEE SHEET 5

DESIGN EXCEPTION REQUESTED FOR LANE WIDTHS (11') AND USABLE SHOULDER (4' MINIMUM)

NOTE: ALL DRIVEWAY RADII ARE 10' UNLESS OTHERWISE NOTED.

FOR -L- PROFILE, SEE SHEET 27

15-JUN-2021 13:22
 \Roadway\Proj\U4906_rdy_psh4.dgn
 HNTB