

SURVEY CONTROL SHEET U4906

| | |
|-----------------------|-----------|
| PROJECT REFERENCE NO. | SHEET NO. |
| 40255.1.1 | 1C-2 |
| Location and Surveys | |

INDICATES GEODETIC CONTROL MONUMENTS USED OR SET FOR HORIZONTAL AND VERTICAL PROJECT CONTROL BY THE NCDOT LOCATION AND SURVEYS UNIT.
PROJECT CONTROL ESTABLISHED USING GNSS (GLOBAL NAVIGATION SATELLITE SYSTEM).

SITE CALIBRATION INFORMATION HAS NOT BEEN PROVIDED FOR THIS PROJECT. IF FURTHER INFORMATION IS NEEDED, PLEASE CONTACT THE LOCATION AND SURVEYS UNIT.

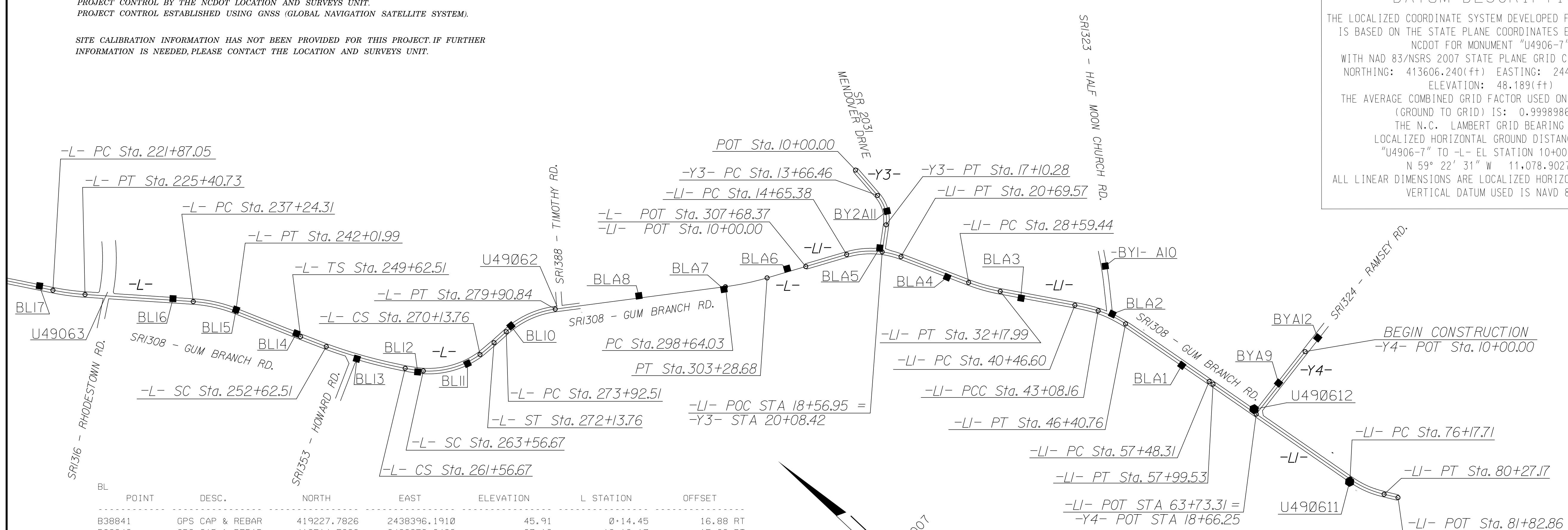
DATUM DESCRIPTION

THE LOCALIZED COORDINATE SYSTEM DEVELOPED FOR THIS PROJECT IS BASED ON THE STATE PLANE COORDINATES ESTABLISHED BY NCDOT FOR MONUMENT "U4906-7" WITH NAD 83/NSRS 2007 STATE PLANE GRID COORDINATES OF NORTHING: 413606.240(ft) EASTING: 2447928.332(ft) ELEVATION: 48.189(ft)

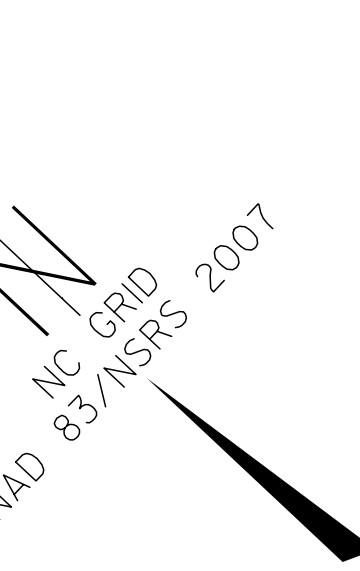
THE AVERAGE COMBINED GRID FACTOR USED ON THIS PROJECT (GROUND TO GRID) IS: 0.9998986292

THE N.C. LAMBERT GRID BEARING AND LOCALIZED HORIZONTAL GROUND DISTANCE FROM "U4906-7" TO -L- EL STATION 10+00.00 IS
N 59° 22' 31" W 11,078.9027'

ALL LINEAR DIMENSIONS ARE LOCALIZED HORIZONTAL DISTANCES
VERTICAL DATUM USED IS NAVD 88



| BL POINT | DESC. | NORTH | EAST | ELEVATION | L STATION | OFFSET |
|----------|-----------------|-------------|--------------|-----------|-----------|----------|
| B38841 | GPS CAP & REBAR | 419227.7826 | 2438396.1910 | 45.91 | 0+14.45 | 16.88 RT |
| B38842 | GPS CAP & REBAR | 418514.5683 | 2439359.6489 | 37.12 | 12+13.17 | 15.32 RT |
| BL42 | TRV CAP & REBAR | 418054.9734 | 2439976.8122 | 24.47 | 19+82.66 | 16.52 RT |
| BL41 | TRV CAP & REBAR | 417720.3338 | 2440452.3036 | 26.11 | 25+62.97 | 19.88 RT |
| BL5 | TRV CAP & REBAR | 417457.8552 | 2440898.8903 | 31.11 | 30+79.92 | 16.82 RT |
| BL40 | TRV CAP & REBAR | 417132.4995 | 2441550.5362 | 40.64 | 38+07.53 | 16.08 LT |
| BL39 | TRV CAP & REBAR | 416630.5031 | 2442219.8384 | 39.13 | 46+42.36 | 15.43 LT |
| U490610 | GPS CAP & REBAR | 416137.8418 | 2442557.2113 | 32.40 | 52+38.76 | 15.77 LT |
| BL38 | TRV CAP & REBAR | 415606.5308 | 2442822.4454 | 28.67 | 58+32.60 | 15.33 LT |
| U49069 | GPS CAP & REBAR | 415069.6854 | 2443055.6974 | 23.69 | 64+17.08 | 16.20 RT |
| BL37 | TRV CAP & REBAR | 414640.2366 | 2443362.1127 | 25.04 | 69+42.45 | 17.64 RT |
| BL36 | TRV CAP & REBAR | 414422.8701 | 2443819.1367 | 24.04 | 74+46.71 | 18.02 LT |
| BL35 | TRV CAP & REBAR | 414127.6189 | 2444426.2526 | 28.16 | 81+21.81 | 15.73 LT |
| BL34 | TRV CAP & REBAR | 413900.2617 | 2444928.0211 | 33.79 | 86+72.19 | 16.24 RT |
| BL33 | TRV CAP & REBAR | 413878.6152 | 2445712.6057 | 43.69 | 94+55.14 | 17.71 LT |
| BL32 | TRV CAP & REBAR | 413822.9024 | 2446536.2347 | 47.18 | 102+80.65 | 15.34 LT |
| BL31 | TRV CAP & REBAR | 413768.4537 | 2447376.7948 | 48.57 | 111+22.97 | 15.32 LT |
| U49067 | GPS CAP & REBAR | 413606.2240 | 2447928.3325 | 48.19 | 116+91.99 | 33.94 LT |
| BL30 | TRV CAP & REBAR | 413164.1751 | 2448344.5118 | 48.66 | 122+93.34 | 22.18 RT |
| BL29 | TRV CAP & REBAR | 412884.4303 | 2448834.7121 | 48.37 | 128+54.67 | 17.73 RT |
| BL28 | TRV CAP & REBAR | 412729.0972 | 2449404.3106 | 51.68 | 134+44.05 | 16.82 LT |
| BL27 | TRV CAP & REBAR | 412472.7141 | 2449923.3090 | 50.48 | 140+20.73 | 16.12 LT |
| BL26 | TRV CAP & REBAR | 412131.0487 | 2450390.7278 | 47.21 | 145+99.50 | 15.55 LT |
| BL25 | TRV CAP & REBAR | 411896.5363 | 2450818.8945 | 47.67 | 152+07.63 | 16.91 LT |
| BL24 | TRV CAP & REBAR | 411121.4331 | 2451128.7043 | 45.31 | 158+60.76 | 16.43 LT |
| BL23 | TRV CAP & REBAR | 410567.1985 | 2451280.5224 | 46.33 | 164+35.42 | 16.61 LT |
| U49066 | GPS CAP & REBAR | 410008.1620 | 2451399.4752 | 46.95 | 170+06.03 | 16.17 RT |
| BL22 | TRV CAP & REBAR | 409478.1065 | 2451592.6592 | 47.79 | 175+68.41 | 16.91 RT |
| U49065 | GPS CAP & REBAR | 408959.1429 | 2451853.7429 | 45.01 | 181+48.23 | 16.94 RT |
| BL21 | TRV CAP & REBAR | 408402.7974 | 2452422.8663 | 45.24 | 189+42.28 | 16.48 LT |
| BL20 | TRV CAP & REBAR | 407784.3884 | 2452948.2985 | 42.05 | 197+51.68 | 22.91 LT |
| BL19 | TRV CAP & REBAR | 407189.5165 | 2453317.5865 | 43.94 | 204+50.46 | 15.90 LT |
| BL18 | TRV CAP & REBAR | 406478.8588 | 2453756.9057 | 46.69 | 212+85.95 | 16.11 LT |
| BL17 | TRV CAP & REBAR | 405842.4942 | 2454150.8603 | 46.31 | 220+34.39 | 16.78 LT |
| U49063 | GPS CAP & REBAR | 405254.1273 | 2454608.0467 | 46.15 | 227+83.95 | 40.07 LT |
| BL16 | TRV CAP & REBAR | 404685.6167 | 2455046.0498 | 44.87 | 235+01.24 | 16.79 LT |
| BL15 | TRV CAP & REBAR | 404101.0849 | 2455429.8049 | 40.52 | 241+99.37 | 15.06 LT |
| BL14 | TRV CAP & REBAR | 403443.9506 | 2455691.5652 | 36.45 | 249+06.69 | 15.92 LT |
| BL13 | TRV CAP & REBAR | 402774.6708 | 2455942.5223 | 36.07 | 256+20.08 | 21.70 RT |
| BL12 | TRV CAP & REBAR | 402192.1929 | 2456292.0339 | 35.16 | 262+96.82 | 16.84 RT |
| BL11 | TRV CAP & REBAR | 401857.9054 | 2456729.8014 | 30.97 | 268+46.15 | 15.37 RT |
| BL10 | TRV CAP & REBAR | 401793.7408 | 2457354.2536 | 32.36 | 274+71.89 | 15.92 LT |
| U49062 | GPS CAP & REBAR | 401573.9450 | 2457855.0470 | 32.68 | 280+13.96 | 28.48 LT |
| BLA8 | TRV CAP & REBAR | 401000.7770 | 2458549.3900 | 32.99 | 289+14.30 | 24.92 LT |
| BLA7 | TRV CAP & REBAR | 400372.4100 | 2459236.2410 | 32.84 | 298+43.82 | 26.10 RT |
| BLA6 | TRV CAP & REBAR | 400022.9140 | 2459871.8260 | 19.14 | 305+66.93 | 33.91 LT |



| BL1 POINT | DESC. | NORTH | EAST | ELEVATION | L1 STATION | OFFSET |
|-----------|-----------------|-------------|--------------|-----------|------------|----------|
| BLA5 | TRV CAP & REBAR | 399442.5760 | 2460736.5820 | 29.32 | 18+29.95 | 45.70 LT |
| BLA4 | TRV CAP & REBAR | 398686.6770 | 2460999.1360 | 31.83 | 26+19.92 | 30.70 RT |
| BLA3 | TRV CAP & REBAR | 397948.8120 | 2461387.8840 | 32.79 | 34+51.20 | 26.15 RT |
| BLA2 | TRV CAP & REBAR | 397098.7770 | 2461941.3390 | 33.43 | 44+63.09 | 22.05 LT |
| BLA1 | TRV CAP & REBAR | 396162.8380 | 2462052.5640 | 27.81 | 54+02.25 | 24.10 RT |
| GPS12 | GPS CAP & REBAR | 395260.1660 | 2462243.8590 | 29.03 | 63+23.35 | 30.56 LT |
| GPS11 | GPS CAP & REBAR | 393958.1340 | 2462380.6130 | 11.92 | 76+30.96 | 26.94 RT |

| BY3 POINT | DESC. | NORTH | EAST | ELEVATION | Y1 STATION | OFFSET |
|-----------|-----------------|-------------|--------------|-----------|------------------------|--------|
| U49068 | GPS CAP & REBAR | 414523.9094 | 2447645.8568 | 49.79 | OUTSIDE PROJECT LIMITS | |

| BY2 POINT | DESC. | NORTH | EAST | ELEVATION | Y3 STATION | OFFSET |
|-----------|-----------------|-------------|--------------|-----------|------------|----------|
| A11 | TRV CAP & REBAR | 399658.0640 | 2461075.6250 | 34.96 | 15+64.47 | 15.81 LT |

| BY POINT | DESC. | NORTH | EAST | ELEVATION | Y4 STATION | OFFSET |
|----------|-----------------|-------------|--------------|-----------|------------------------|----------|
| BYA12 | TRV CAP & REBAR | 395285.7953 | 2463286.1330 | 31.67 | OUTSIDE PROJECT LIMITS | |
| BYA9 | TRV CAP & REBAR | 395260.4980 | 2462633.7380 | 30.64 | 14+50.34 | 17.17 RT |

NOTE: DRAWING NOT TO SCALE