

# SURVEY CONTROL SHEET U4906

PROJECT REFERENCE NO.	SHEET NO.
40255.1.1	1C-1
Location and Surveys	

INDICATES GEODETIC CONTROL MONUMENTS USED OR SET FOR HORIZONTAL AND VERTICAL PROJECT CONTROL BY THE NCDOT LOCATION AND SURVEYS UNIT.  
PROJECT CONTROL ESTABLISHED USING GNSS (GLOBAL NAVIGATION SATELLITE SYSTEM).

SITE CALIBRATION INFORMATION HAS NOT BEEN PROVIDED FOR THIS PROJECT. IF FURTHER INFORMATION IS NEEDED, PLEASE CONTACT THE LOCATION AND SURVEYS UNIT.

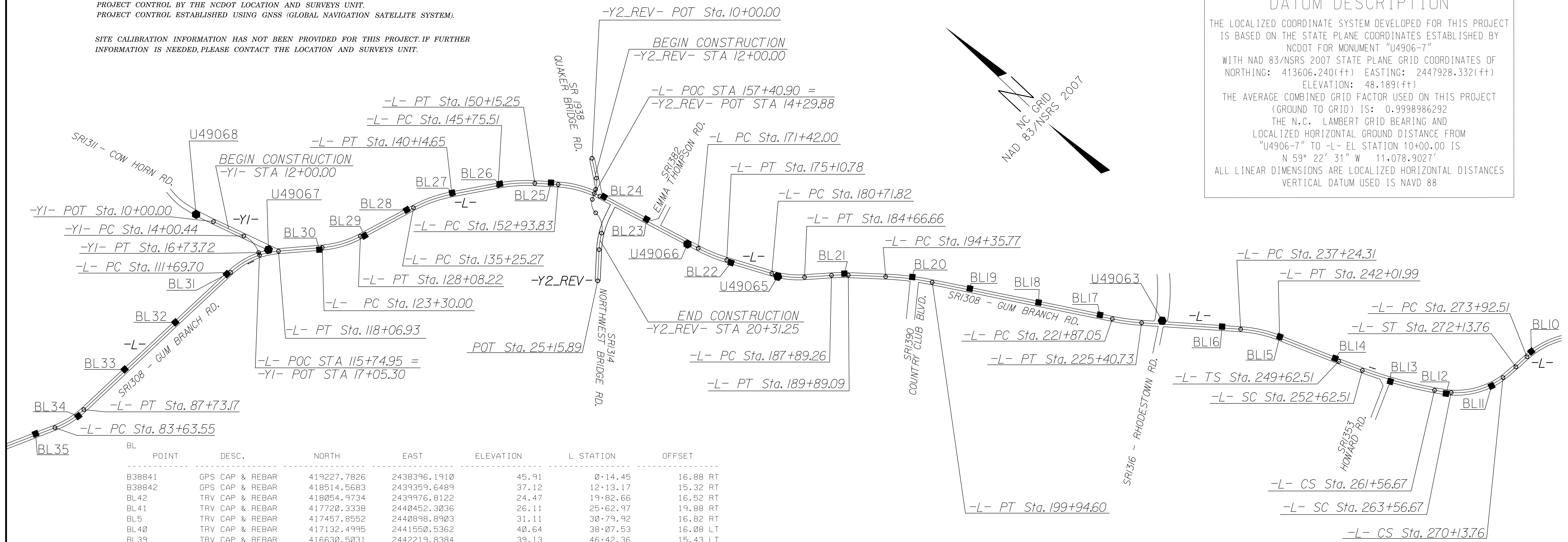
**DATUM DESCRIPTION**

THE LOCALIZED COORDINATE SYSTEM DEVELOPED FOR THIS PROJECT IS BASED ON THE STATE PLANE COORDINATES ESTABLISHED BY NCDOT FOR MONUMENT "U4906-7" WITH NAD 83/NSRS 2007 STATE PLANE GRID COORDINATES OF NORTHING: 413606.240(ft) EASTING: 2447928.332(ft) ELEVATION: 48.189(ft)

THE AVERAGE COMBINED GRID FACTOR USED ON THIS PROJECT (GROUND TO GRID) IS: 0.9998986292

THE N.C. LAMBERT GRID BEARING AND LOCALIZED HORIZONTAL GROUND DISTANCE FROM "U4906-7" TO -L- EL STATION 10+00.00 IS  
N 59° 22' 31" W 11,078.9027'

ALL LINEAR DIMENSIONS ARE LOCALIZED HORIZONTAL DISTANCES  
VERTICAL DATUM USED IS NAVD 88



BL	POINT	DESC.	NORTH	EAST	ELEVATION	L STATION	OFFSET
B38841	GPS CAP & REBAR		419227.7826	2438396.1910	45.91	0+14.45	16.88 RT
B38842	GPS CAP & REBAR		418514.5683	2439359.6489	37.12	12+13.17	15.32 RT
BL42	TRV CAP & REBAR		418054.9734	2439976.8122	24.47	19+82.66	16.52 RT
BL41	TRV CAP & REBAR		417720.3338	2440452.3036	26.11	25+62.97	19.88 RT
BL5	TRV CAP & REBAR		417457.8552	2440898.8903	31.11	30+79.92	16.82 RT
BL40	TRV CAP & REBAR		417132.4995	2441550.5362	40.64	38+07.53	16.08 LT
BL39	TRV CAP & REBAR		416630.5031	2442219.8384	39.13	46+42.36	15.43 LT
U490610	GPS CAP & REBAR		416137.8418	2442557.2113	32.40	52+38.76	15.77 LT
BL38	TRV CAP & REBAR		415606.5308	2442822.4454	28.67	58+32.60	15.33 LT
U49069	GPS CAP & REBAR		415069.6854	2443055.6974	23.69	64+17.08	16.20 RT
BL37	TRV CAP & REBAR		414640.2366	2443362.1127	25.04	69+42.45	17.64 RT
BL36	TRV CAP & REBAR		414422.8701	2443819.1367	24.04	74+46.71	18.02 LT
BL35	TRV CAP & REBAR		414127.6189	2444426.2526	28.16	81+21.81	15.73 LT
BL34	TRV CAP & REBAR		413900.2617	2444928.0211	33.79	86+72.19	16.24 RT
BL33	TRV CAP & REBAR		413878.6152	2445712.6057	43.69	94+55.14	17.71 LT
BL32	TRV CAP & REBAR		413822.9024	2446536.2347	47.18	102+80.65	15.34 LT
BL31	TRV CAP & REBAR		413768.4537	2447376.7948	48.57	111+22.97	15.32 LT
U49067	GPS CAP & REBAR		413606.2240	2447928.3325	48.19	116+91.99	33.94 LT
BL30	TRV CAP & REBAR		413164.1751	2448344.5118	48.66	122+93.34	22.18 RT
BL29	TRV CAP & REBAR		412884.4303	2448834.7121	48.37	128+54.67	17.73 RT
BL28	TRV CAP & REBAR		412729.0972	2449404.3106	51.68	134+44.05	16.82 LT
BL27	TRV CAP & REBAR		412472.7141	2449923.3090	50.48	140+20.73	16.12 LT
BL26	TRV CAP & REBAR		412131.0487	2450390.7278	47.21	145+99.50	15.55 LT
BL25	TRV CAP & REBAR		411696.5363	2450818.8945	47.67	152+07.63	16.91 LT
BL24	TRV CAP & REBAR		411121.4331	2451128.7043	45.31	158+60.76	16.43 LT
BL23	TRV CAP & REBAR		410567.1985	2451280.5224	46.33	164+35.42	16.61 LT
U49066	GPS CAP & REBAR		410008.1620	2451399.4752	46.95	170+06.03	16.17 RT
BL22	TRV CAP & REBAR		409478.1065	2451592.6592	47.79	175+68.41	16.91 RT
U49065	GPS CAP & REBAR		408959.1429	2451853.7429	45.01	181+48.23	16.94 RT
BL21	TRV CAP & REBAR		408402.7974	2452422.8663	45.24	189+42.28	16.48 LT
BL20	TRV CAP & REBAR		407784.3884	2452948.2985	42.05	197+51.68	22.91 LT
BL19	TRV CAP & REBAR		407189.5165	2453317.5865	43.94	204+50.46	15.90 LT
BL18	TRV CAP & REBAR		406478.8588	2453756.9057	46.69	212+85.95	16.11 LT
BL17	TRV CAP & REBAR		405842.4942	2454150.8603	46.31	220+34.39	16.78 LT
U49063	GPS CAP & REBAR		405254.1273	2454608.0467	46.15	227+83.95	40.07 LT
BL16	TRV CAP & REBAR		404685.6167	2455046.0498	44.87	235+01.24	16.79 LT
BL15	TRV CAP & REBAR		404101.0849	2455429.8049	40.52	241+99.37	15.06 LT
BL14	TRV CAP & REBAR		403443.9506	2455691.5652	36.45	249+06.69	15.92 LT
BL13	TRV CAP & REBAR		402774.6708	2455942.5223	36.07	256+20.08	21.70 RT
BL12	TRV CAP & REBAR		402192.1929	2456292.0339	35.16	262+96.82	16.84 RT
BL11	TRV CAP & REBAR		401857.9054	2456729.8014	30.97	268+46.15	15.37 RT
BL10	TRV CAP & REBAR		401793.7408	2457354.2536	32.36	274+71.89	15.92 LT
U49062	GPS CAP & REBAR		401573.9450	2457855.0470	32.68	280+13.96	28.48 LT
BLA8	TRV CAP & REBAR		401000.7770	2458549.3900	32.99	289+14.30	24.92 LT
BLA7	TRV CAP & REBAR		400372.4100	2459236.2410	32.84	298+43.82	26.10 RT
BLA6	TRV CAP & REBAR		400022.9140	2459871.8260	19.14	305+66.93	33.91 LT

BL1	POINT	DESC.	NORTH	EAST	ELEVATION	L1 STATION	OFFSET
BLA5	TRV CAP & REBAR		399442.5760	2460736.5820	29.32	18+29.95	45.70 LT
BLA4	TRV CAP & REBAR		398686.6770	2460999.1360	31.83	26+19.92	30.70 RT
BLA3	TRV CAP & REBAR		397948.8120	2461387.8840	32.79	34+51.20	26.15 RT
BLA2	TRV CAP & REBAR		397098.7770	2461941.3390	33.43	44+63.09	22.05 LT
BLA1	TRV CAP & REBAR		396162.8380	2462052.5640	27.81	54+02.25	24.10 RT
GPS12	GPS CAP & REBAR		395260.1660	2462243.8590	29.03	63+23.35	30.56 LT
GPS11	GPS CAP & REBAR		393958.1340	2462380.6130	11.92	76+30.96	26.94 RT

BY3	POINT	DESC.	NORTH	EAST	ELEVATION	Y1 STATION	OFFSET
U49068	GPS CAP & REBAR		414523.9094	2447645.8568	49.79	OUTSIDE PROJECT LIMITS	

BY2	POINT	DESC.	NORTH	EAST	ELEVATION	Y3 STATION	OFFSET
A11	TRV CAP & REBAR		399658.0640	2461075.6250	34.96	15+64.47	15.81 LT

BY	POINT	DESC.	NORTH	EAST	ELEVATION	Y4 STATION	OFFSET
BYA12	TRV CAP & REBAR		395285.7953	2463286.1330	31.67	OUTSIDE PROJECT LIMITS	
BYA9	TRV CAP & REBAR		395260.4980	2462633.7380	30.64	14+50.34	17.17 RT

NOTE: DRAWING NOT TO SCALE