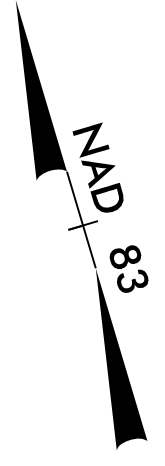
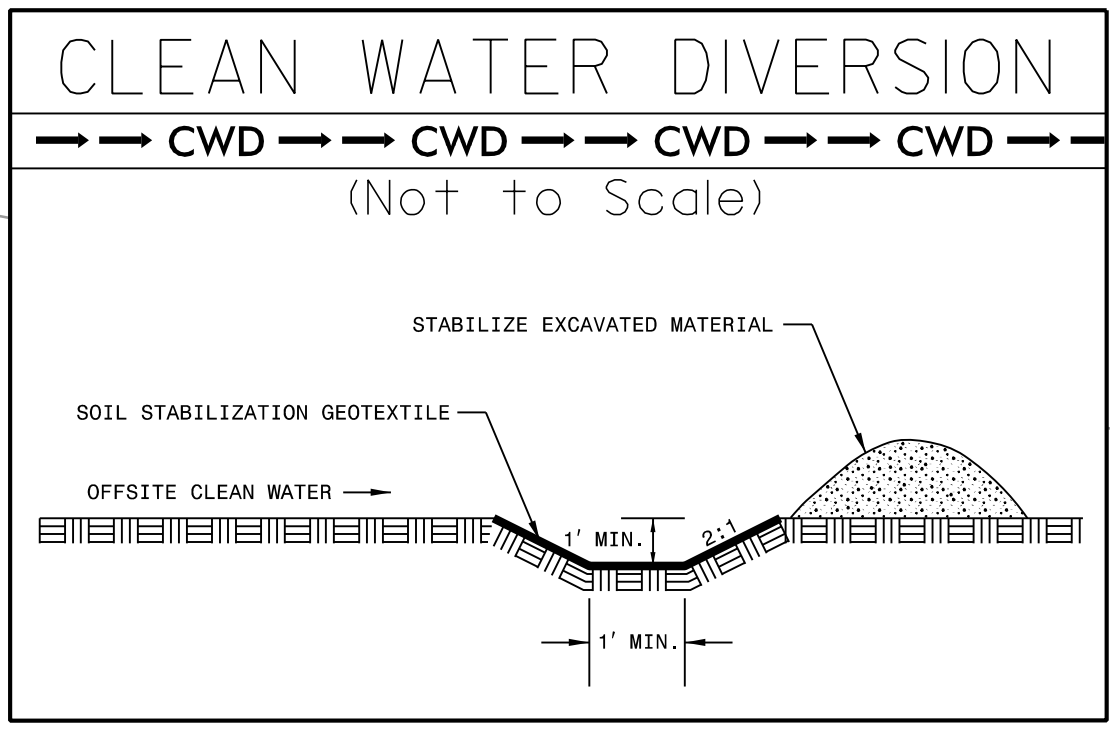
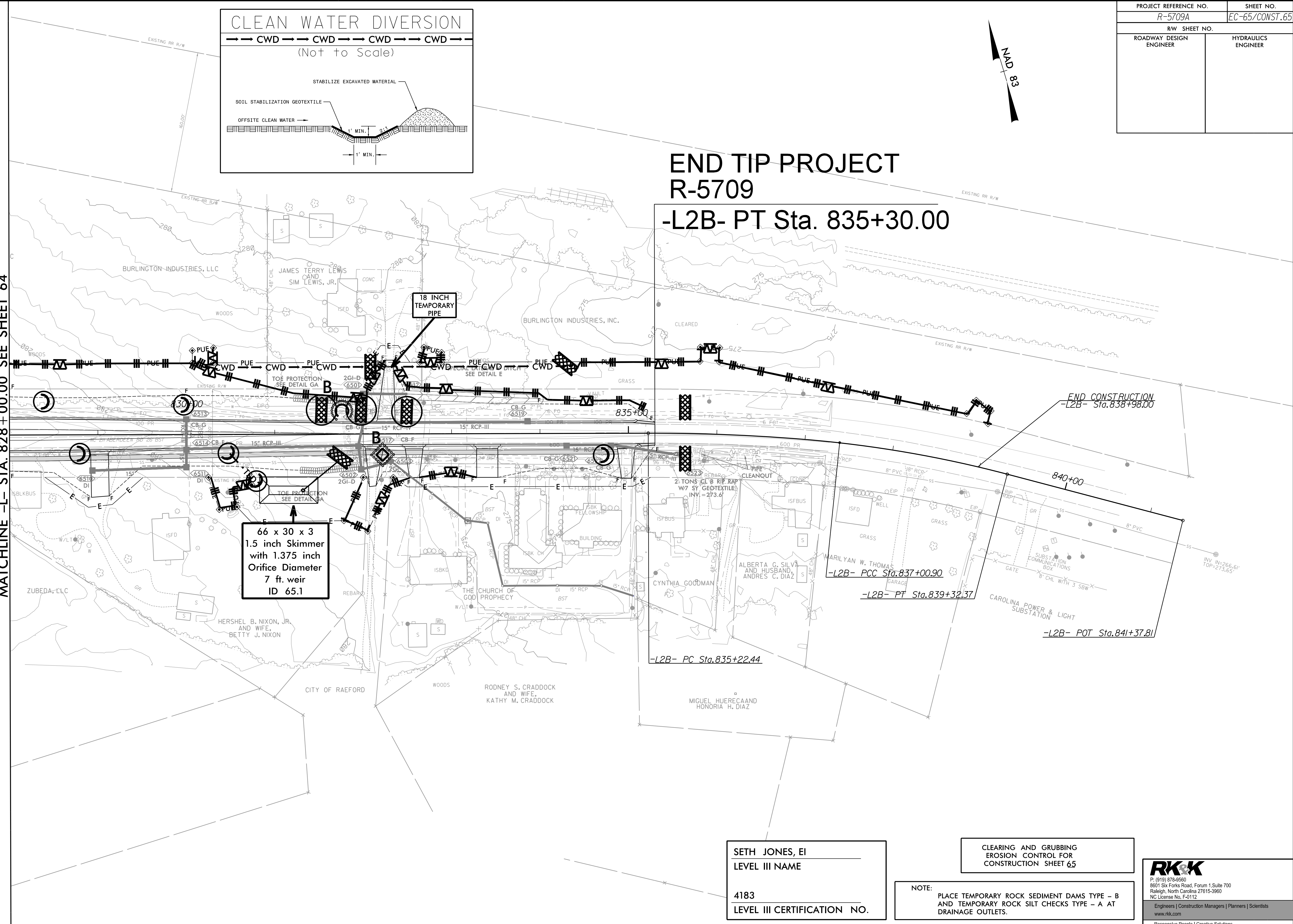


PROJECT REFERENCE NO. R-5709A	SHEET NO. EC-65/CONST.65
ROADWAY DESIGN ENGINEER	HYDRAULICS ENGINEER



END TIP PROJECT R-5709 -L2B- PT Sta. 835+30.00

MATCHLINE -L- STA. 828+00.00 SEE SHEET 64



**66 x 30 x 3
1.5 inch Skimmer
with 1.375 inch
Orifice Diameter
7 ft. weir
ID 65.1**

**18 INCH
TEMPORARY
PIPE**

-L2B- PC Sta. 835+22.44

-L2B- PCC Sta. 837+00.90

-L2B- PT Sta. 839+32.37

-L2B- POT Sta. 841+37.81

END CONSTRUCTION
-L2B- Sta. 838+98.00

SETH JONES, EI
LEVEL III NAME

4183
LEVEL III CERTIFICATION NO.

CLEARING AND GRUBBING
EROSION CONTROL FOR
CONSTRUCTION SHEET 65

NOTE:
PLACE TEMPORARY ROCK SEDIMENT DAMS TYPE - B
AND TEMPORARY ROCK SILT CHECKS TYPE - A AT
DRAINAGE OUTLETS.

RKK
 P: (919) 978-9990
 8601 Six Forks Road, Forum 1, Suite 700
 Raleigh, North Carolina 27615-3990
 NC License No. F-0112
 Engineers | Construction Managers | Planners | Scientists
 www.rkk.com
 Responsive People | Creative Solutions

8/17/99
7/23/2021
R:\Hydraulics\CADD\PSH\EC - Early Start C&D\Section 2\AR5709_EC_ESCC_psh65.dgn
default