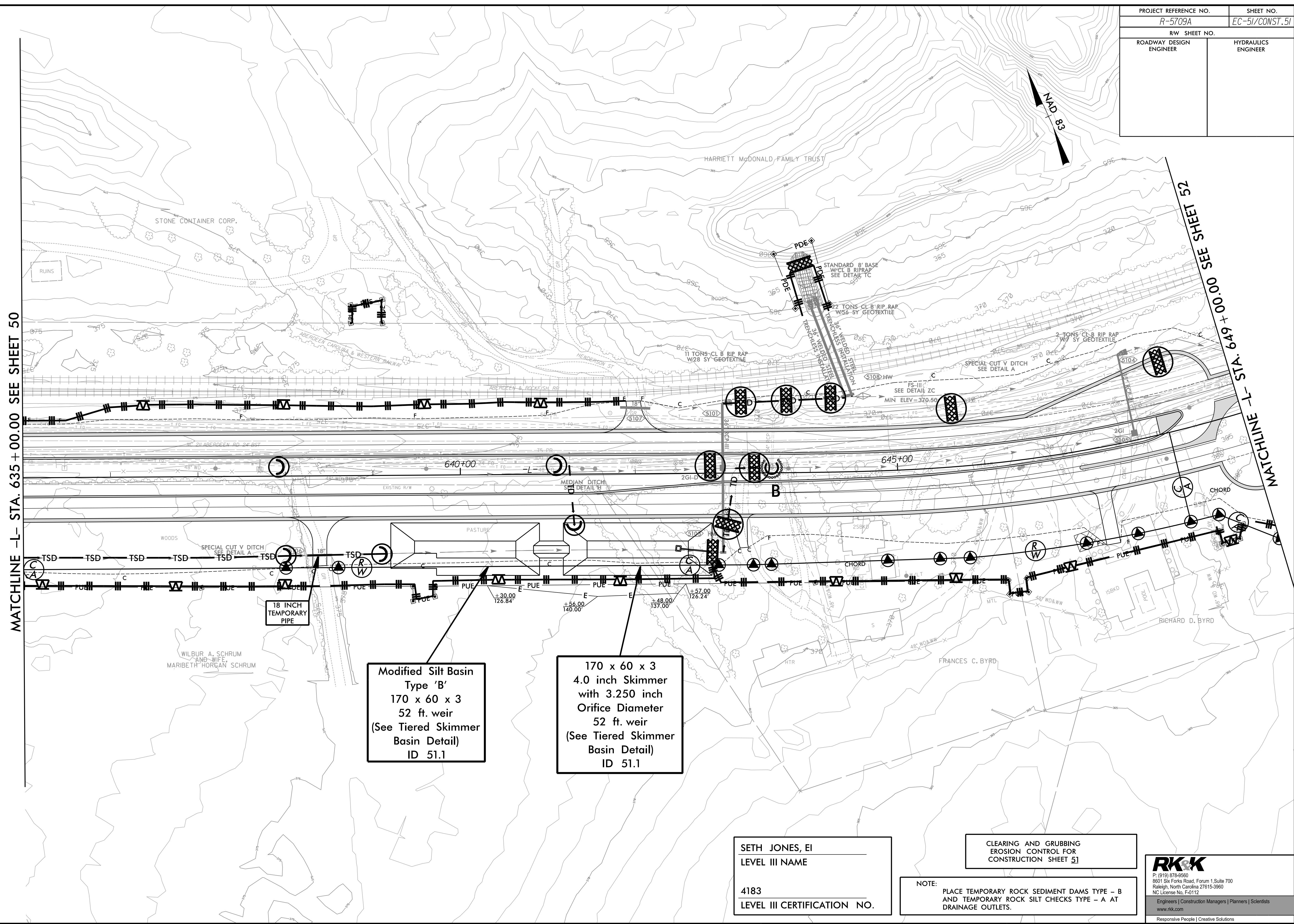


PROJECT REFERENCE NO. R-5709A	SHEET NO. EC-51/CONST. 51
RW SHEET NO.	
ROADWAY DESIGN ENGINEER	HYDRAULICS ENGINEER



MATCHLINE -L- STA. 635 + 00.00 SEE SHEET 50

MATCHLINE -L- STA. 649 + 00.00 SEE SHEET 52

**Modified Silt Basin
Type 'B'**
170 x 60 x 3
52 ft. weir
(See Tiered Skimmer
Basin Detail)
ID 51.1

**170 x 60 x 3
4.0 inch Skimmer
with 3.250 inch
Orifice Diameter
52 ft. weir
(See Tiered Skimmer
Basin Detail)
ID 51.1**

**18 INCH
TEMPORARY
PIPE**

SETH JONES, EI
LEVEL III NAME

4183
LEVEL III CERTIFICATION NO.

**CLEARING AND GRUBBING
EROSION CONTROL FOR
CONSTRUCTION SHEET 51**

NOTE:
PLACE TEMPORARY ROCK SEDIMENT DAMS TYPE - B
AND TEMPORARY ROCK SILT CHECKS TYPE - A AT
DRAINAGE OUTLETS.

RKK
P: (919) 978-9990
8601 Six Forks Road, Forum 1, Suite 700
Raleigh, North Carolina 27615-3990
NC License No. F-0112
Engineers | Construction Managers | Planners | Scientists
www.rkk.com
Responsive People | Creative Solutions

8/17/99
7/23/2021
R:\CH\Projects\CADD\PSH\EC - Early Start C&C\Section 2\AR5709_EC_ESCG_psf51.dgn