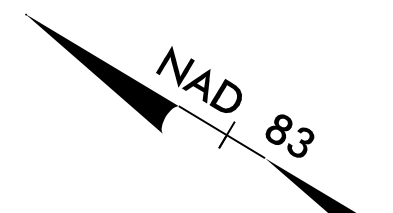
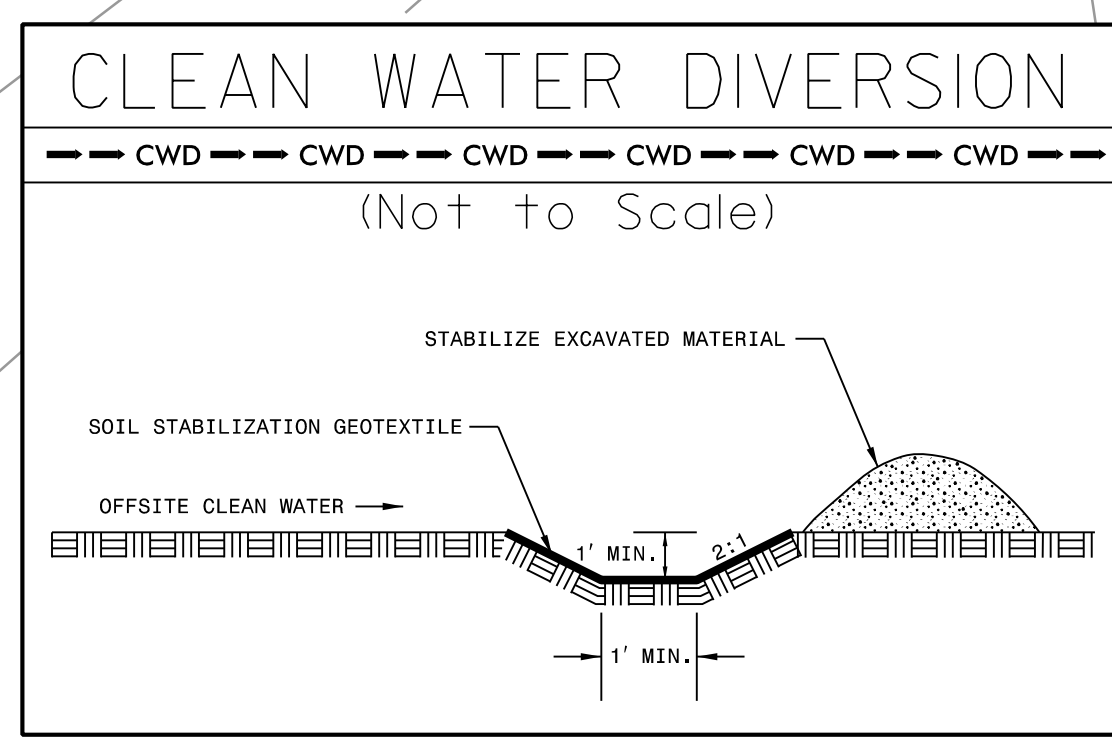


PROJECT REFERENCE NO. R-5709A	SHEET NO. EC-29/CONST.29
RW SHEET NO.	HYDRAULICS ENGINEER
ROADWAY DESIGN ENGINEER	



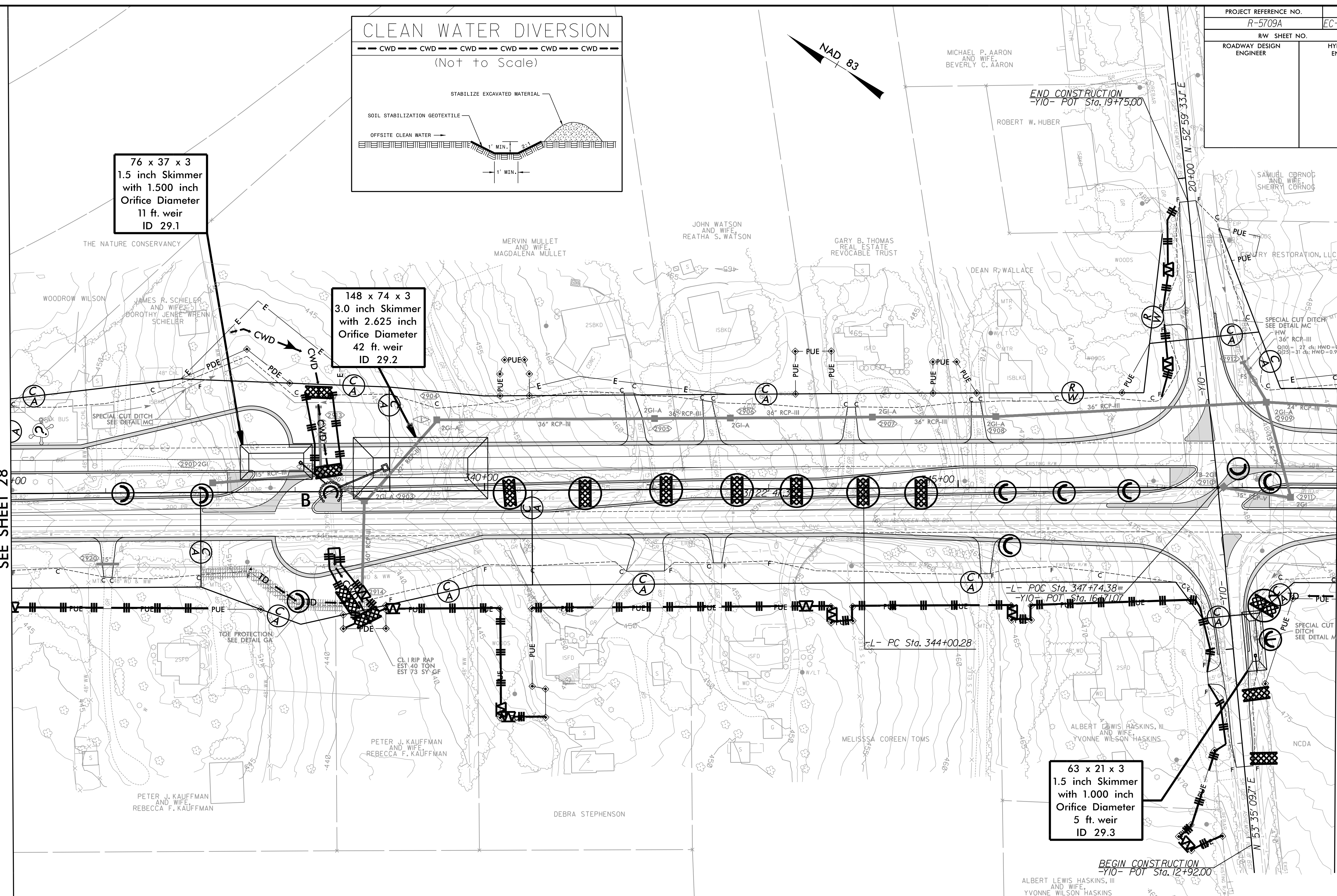
76 x 37 x 3
1.5 inch Skimmer
with 1.500 inch
Orifice Diameter
11 ft. weir
ID 29.1

148 x 74 x 3
3.0 inch Skimmer
with 2.625 inch
Orifice Diameter
42 ft. weir
ID 29.2

63 x 21 x 3
1.5 inch Skimmer
with 1.000 inch
Orifice Diameter
5 ft. weir
ID 29.3

MATCHLINE -L- STA. 335+00.00
SEE SHEET 28

MATCHLINE -L- STA. 349+00.00
SEE SHEET 30



SETH JONES, EI
LEVEL III NAME

4183
LEVEL III CERTIFICATION NO.

CLEARING AND GRUBBING
EROSION CONTROL FOR
CONSTRUCTION SHEET 29

NOTE:
PLACE TEMPORARY ROCK SEDIMENT DAMS TYPE - B
AND TEMPORARY ROCK SILT CHECKS TYPE - A AT
DRAINAGE OUTLETS.

RK&K
P: (919) 378-9500
8601 Six Forks Road, Forum 1, Suite 700
Raleigh, North Carolina 27615-3960
NC License No. F-0112
Engineers | Construction Managers | Planners | Scientists
www.rk.com
Responsive People | Creative Solutions

8/17/99
F:\CH\2001\Projects\CADD\PSH\EC - Early Start C&S\Section 1\RS709A_EC_ESCG_psh29.dgn