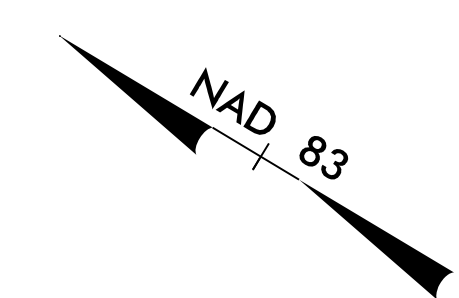
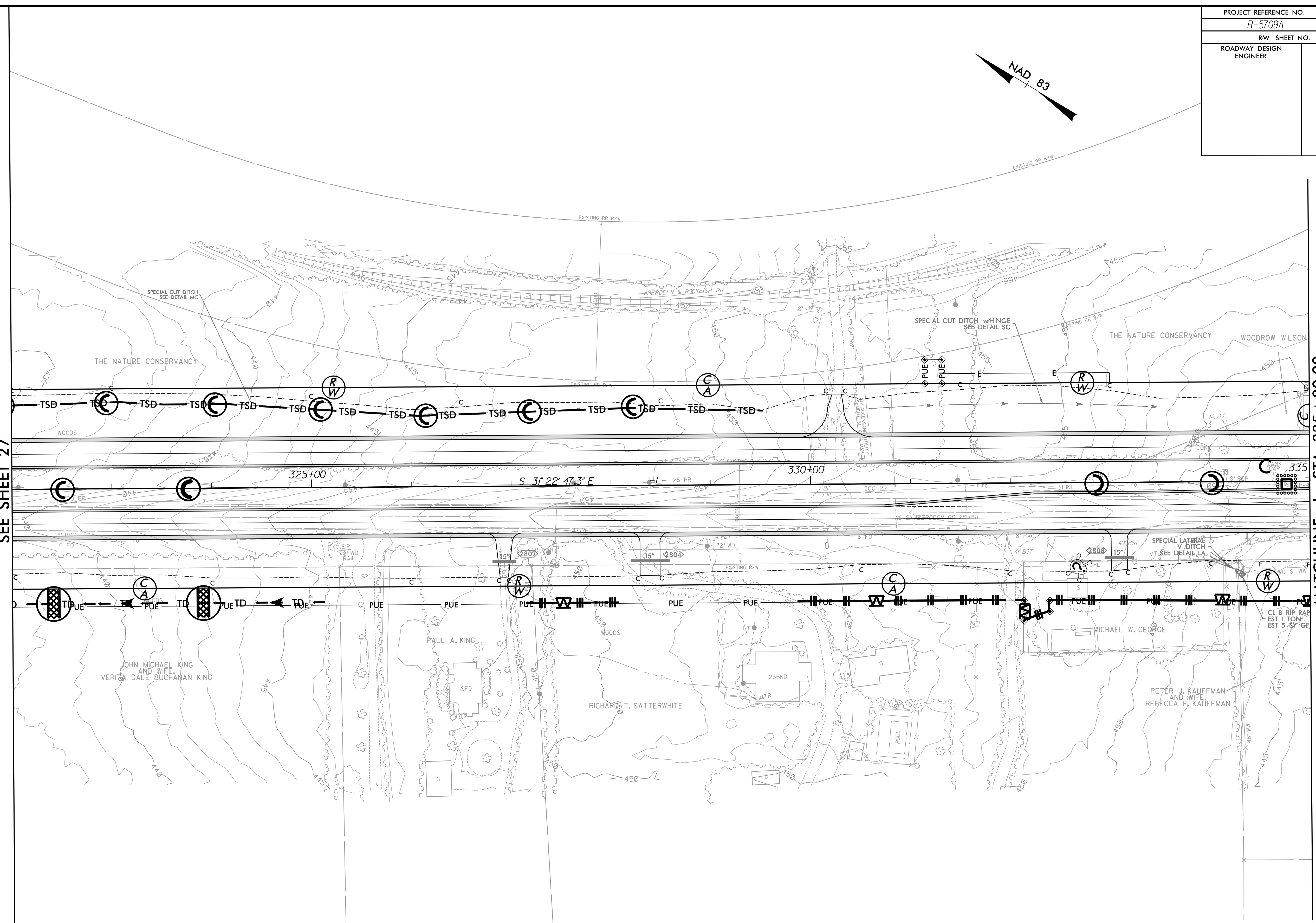


PROJECT REFERENCE NO. R-5709A	SHEET NO. EC-28/CONST.28
RW SHEET NO.	
ROADWAY DESIGN ENGINEER	HYDRAULICS ENGINEER



MATCHLINE - L- STA. 322 + 00.00
SEE SHEET 27

MATCHLINE - L- STA. 335 + 00.00
SEE SHEET 29



SETH JONES, EI
LEVEL III NAME

4183
LEVEL III CERTIFICATION NO.

CLEARING AND GRUBBING
EROSION CONTROL FOR
CONSTRUCTION SHEET 28

NOTE:
PLACE TEMPORARY ROCK SEDIMENT DAMS TYPE - B
AND TEMPORARY ROCK SILT CHECKS TYPE - A AT
DRAINAGE OUTLETS.

RK&K
P: (919) 378-9950
8601 Six Forks Road, Forum 1, Suite 700
Raleigh, North Carolina 27615-3960
NC License No. F-0112

Engineers | Construction Managers | Planners | Scientists
www.rk.com
Responsive People | Creative Solutions

8/17/99
7/23/2021
R:\CH\2021\Hydraulics\CADD\PSH\EC - Early Start C&G\Section 1\R5709A_EC_ESCG_psh28.dgn