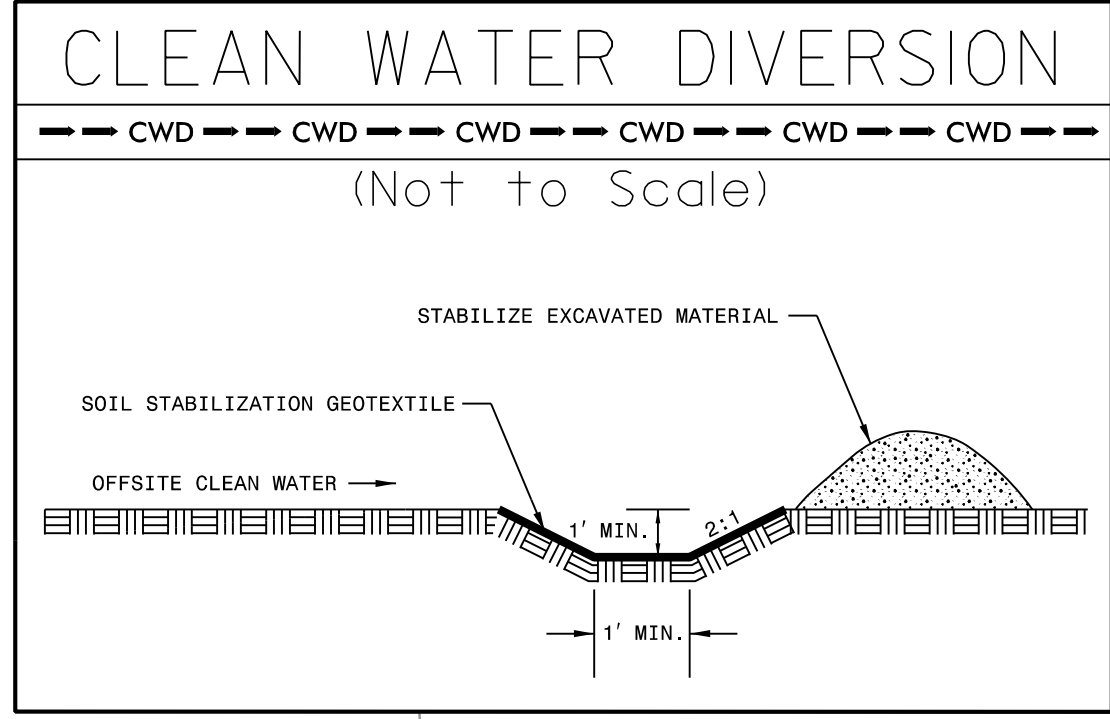
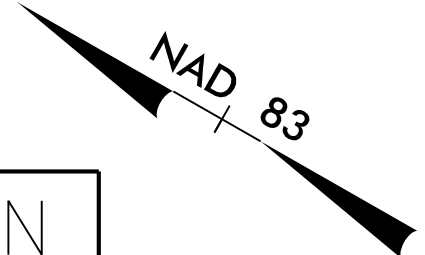


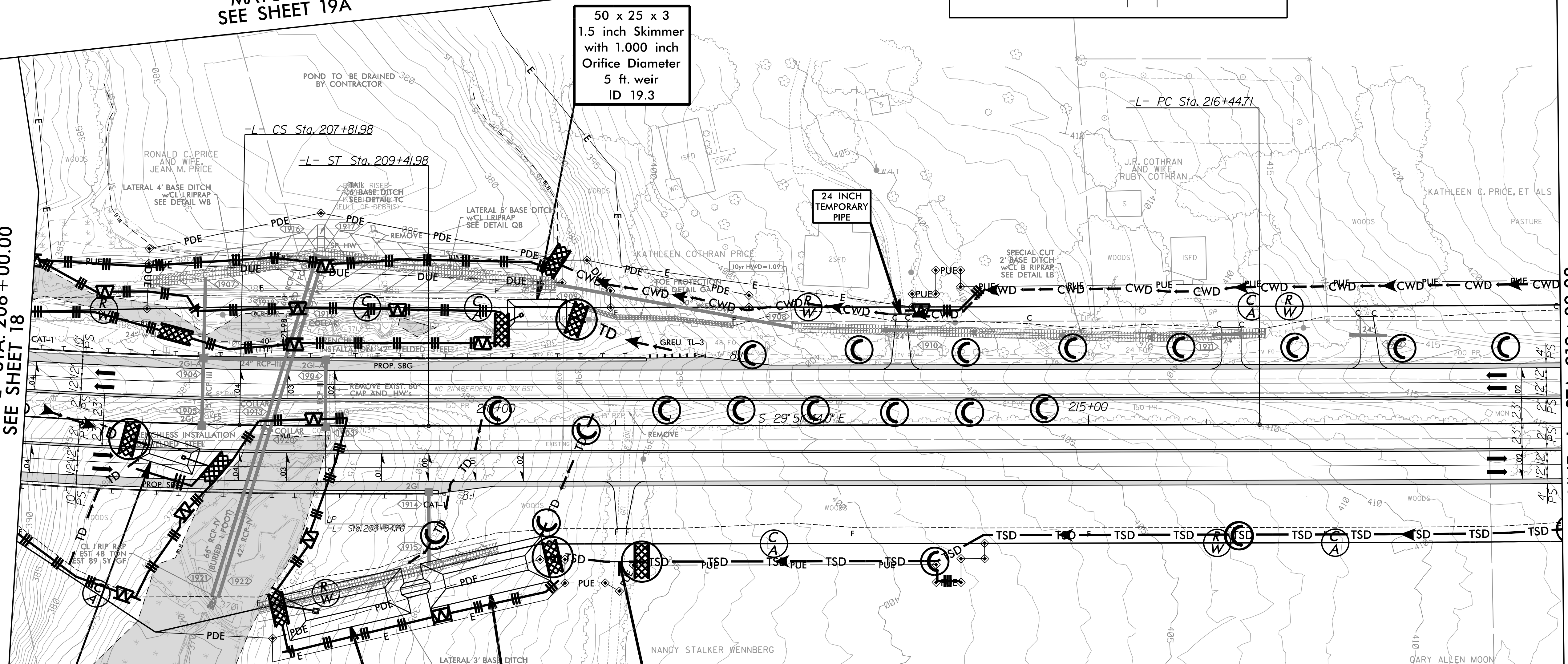
PROJECT REFERENCE NO. R-5709A	SHEET NO. EC-19/CONST.19
RW SHEET NO.	HYDRAULICS ENGINEER
ROADWAY DESIGN ENGINEER	



MATCHLINE  
SEE SHEET 19A

MATCHLINE -L- STA. 206 + 00.00  
SEE SHEET 18

MATCHLINE -L- STA. 219 + 00.00  
SEE SHEET 20



46 x 23 x 3  
1.5 inch Skimmer  
with 0.875 inch  
Orifice Diameter  
4 ft. weir  
ID 19.2

105 x 39 x 3  
2.5 inch Skimmer  
with 2.125 inch  
Orifice Diameter  
31 ft. weir  
(See Tiered Skimmer  
Basin Detail)  
ID 19.1

18 INCH  
TEMPORARY  
PIPE

Modified Silt Basin  
Type 'B'  
105 x 39 x 3  
31 ft. weir  
(See Tiered Skimmer  
Basin Detail)  
ID 19.1

50 x 25 x 3  
1.5 inch Skimmer  
with 1.000 inch  
Orifice Diameter  
5 ft. weir  
ID 19.3

SETH JONES, EI  
LEVEL III NAME

4183  
LEVEL III CERTIFICATION NO.

CLEARING AND GRUBBING  
EROSION CONTROL FOR  
CONSTRUCTION SHEET 19

NOTE:  
PLACE TEMPORARY ROCK SEDIMENT DAMS TYPE - B  
AND TEMPORARY ROCK SILT CHECKS TYPE - A AT  
DRAINAGE OUTLETS.

R  
K  
K

P: (919) 978-9950  
8601 Six Forks Road, Forum 1, Suite 700  
Raleigh, North Carolina 27615-3960  
NC License No. F-0112

Engineers | Construction Managers | Planners | Scientists  
www.rkk.com

Responsive People | Creative Solutions

8/17/99

F:\21\2021\Hydraulics\CADD\PSH\EC - Early\Start C&G\Section 1\R5709A\_EC\_ESCG\_psh19.dgn