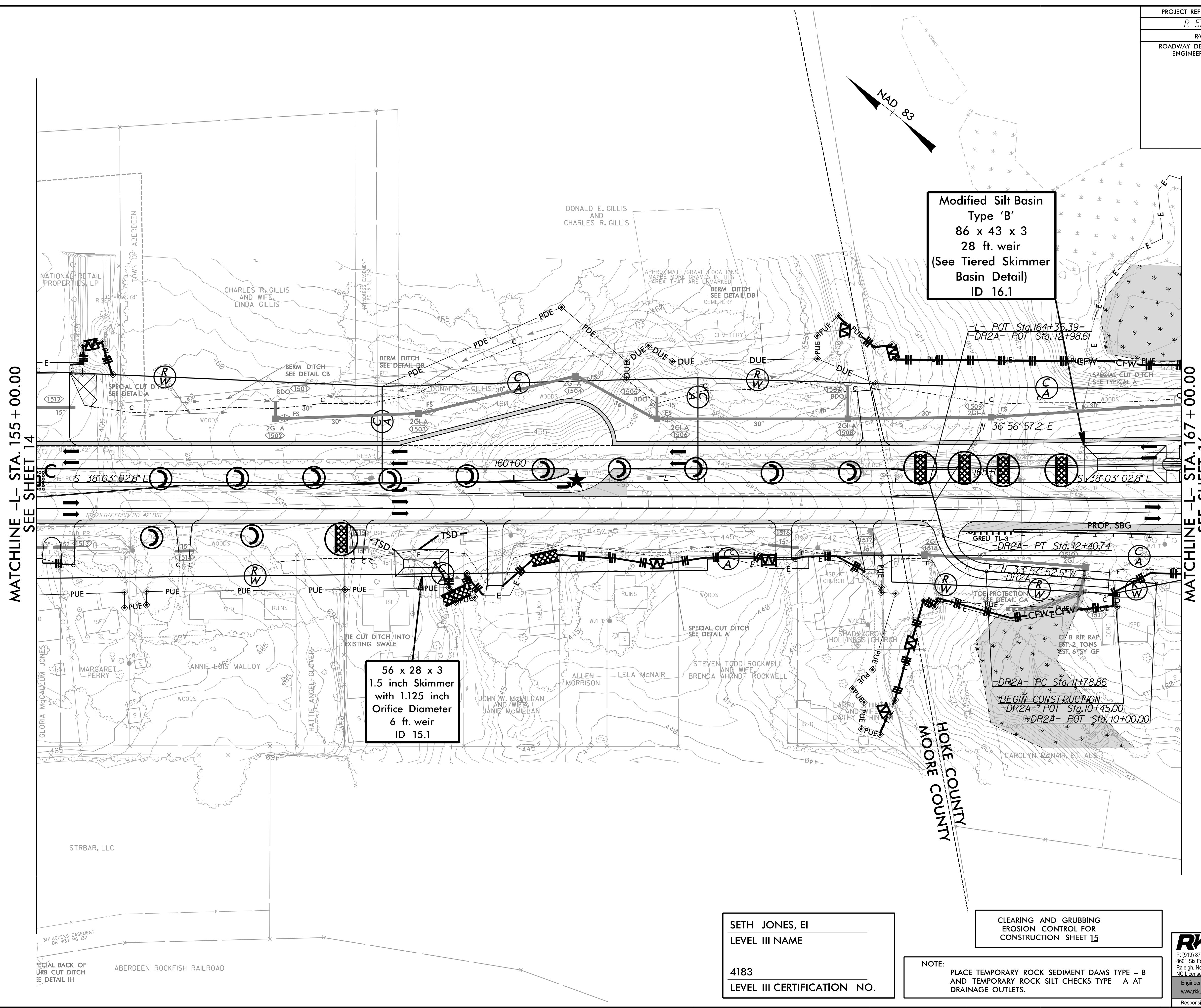


PROJECT REFERENCE NO. R-5709A	SHEET NO. EC-15/CONST.15
RW SHEET NO.	
ROADWAY DESIGN ENGINEER	HYDRAULICS ENGINEER



Modified Silt Basin
 Type 'B'
 86 x 43 x 3
 28 ft. weir
 (See Tiered Skimmer
 Basin Detail)
 ID 16.1

56 x 28 x 3
 1.5 inch Skimmer
 with 1.125 inch
 Orifice Diameter
 6 ft. weir
 ID 15.1

SETH JONES, EI
 LEVEL III NAME

 4183
 LEVEL III CERTIFICATION NO.

CLEARING AND GRUBBING
 EROSION CONTROL FOR
 CONSTRUCTION SHEET 15

NOTE:
 PLACE TEMPORARY ROCK SEDIMENT DAMS TYPE - B
 AND TEMPORARY ROCK SILT CHECKS TYPE - A AT
 DRAINAGE OUTLETS.

RK&K
 P: (919) 378-9550
 8601 Six Forks Road, Forum 1, Suite 700
 Raleigh, North Carolina 27615-3960
 NC License No. F-0112
 Engineers | Construction Managers | Planners | Scientists
 www.rkk.com
 Responsive People | Creative Solutions

8/17/99
 7/23/2021
 R:\CH\Hydraulics\CADD\PSH\EC - Early Start C&S\Section 1\RS709\EC-ESCG_psh15.dgn