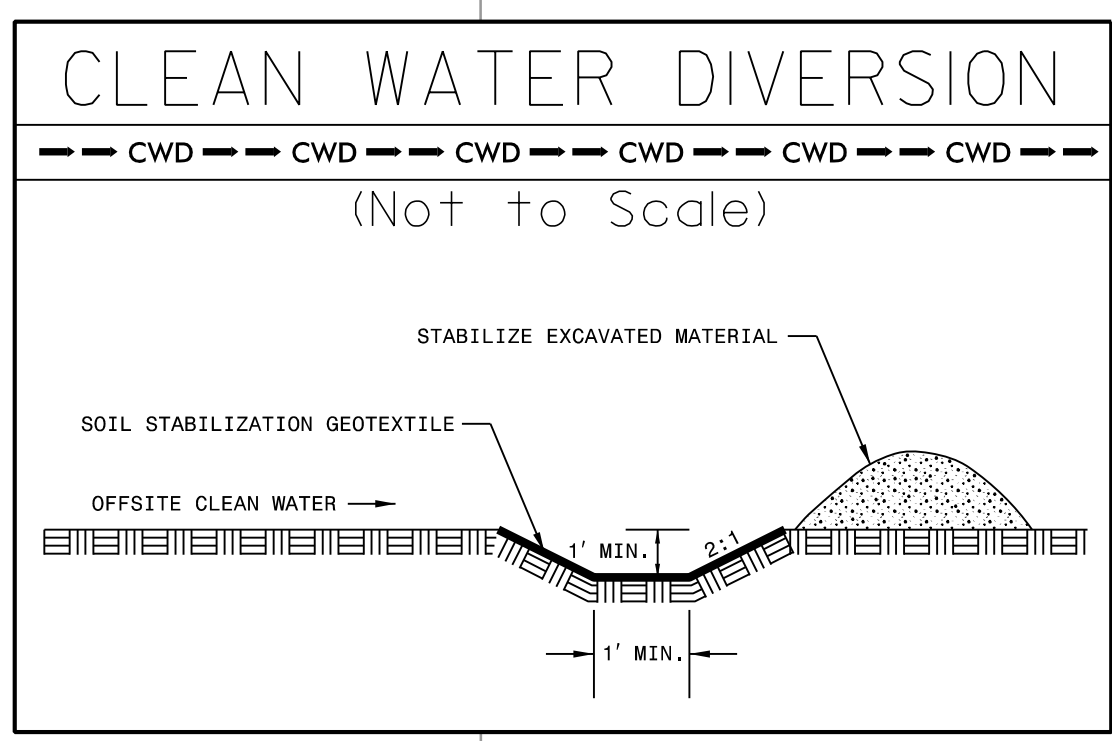
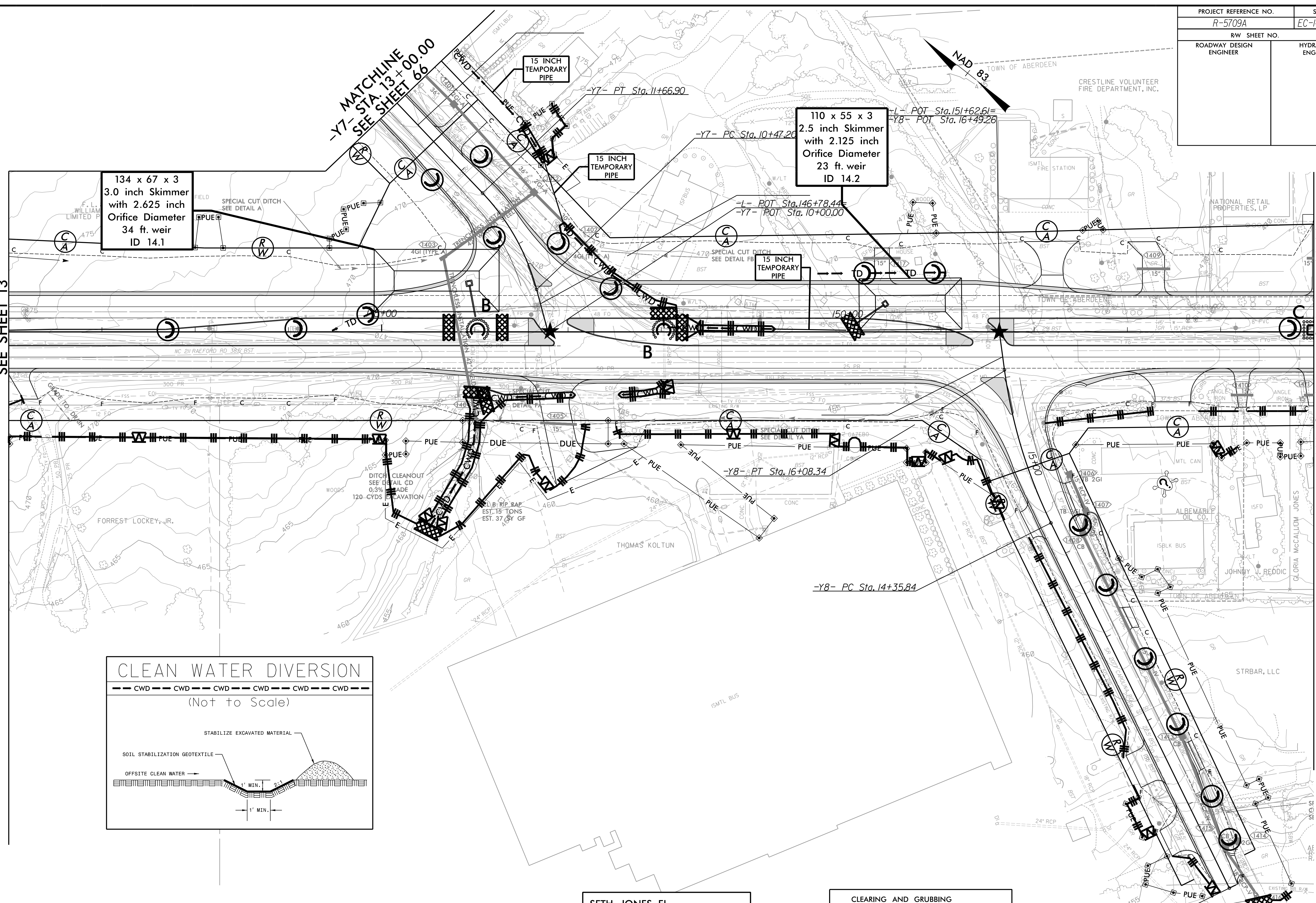


PROJECT REFERENCE NO. R-5709A	SHEET NO. EC-14/CONST.14
RW SHEET NO.	HYDRAULICS ENGINEER
ROADWAY DESIGN ENGINEER	

MATCHLINE -L- STA. 141+00.00
SEE SHEET 13

MATCHLINE -L- STA. 155+00.00
SEE SHEET 15



SETH JONES, EI
LEVEL III NAME

4183
LEVEL III CERTIFICATION NO.

CLEARING AND GRUBBING
EROSION CONTROL FOR
CONSTRUCTION SHEET 14

NOTE:
PLACE TEMPORARY ROCK SEDIMENT DAMS TYPE - B
AND TEMPORARY ROCK SILT CHECKS TYPE - A AT
DRAINAGE OUTLETS.

BEGIN CONSTRUCTION
-Y8- POT Sta. 10+00.00

RK&K
P: (919) 378-9550
8601 Six Forks Road, Forum 1, Suite 700
Raleigh, North Carolina 27615-3960
NC License No. F-0112
Engineers | Construction Managers | Planners | Scientists
www.rk.com
Responsive People | Creative Solutions

8/17/99

R:\CH\Projects\CADD\PSH\EC - Early Start C&G\Section 1\R5709A_EC_ESCG_psh14.dgn