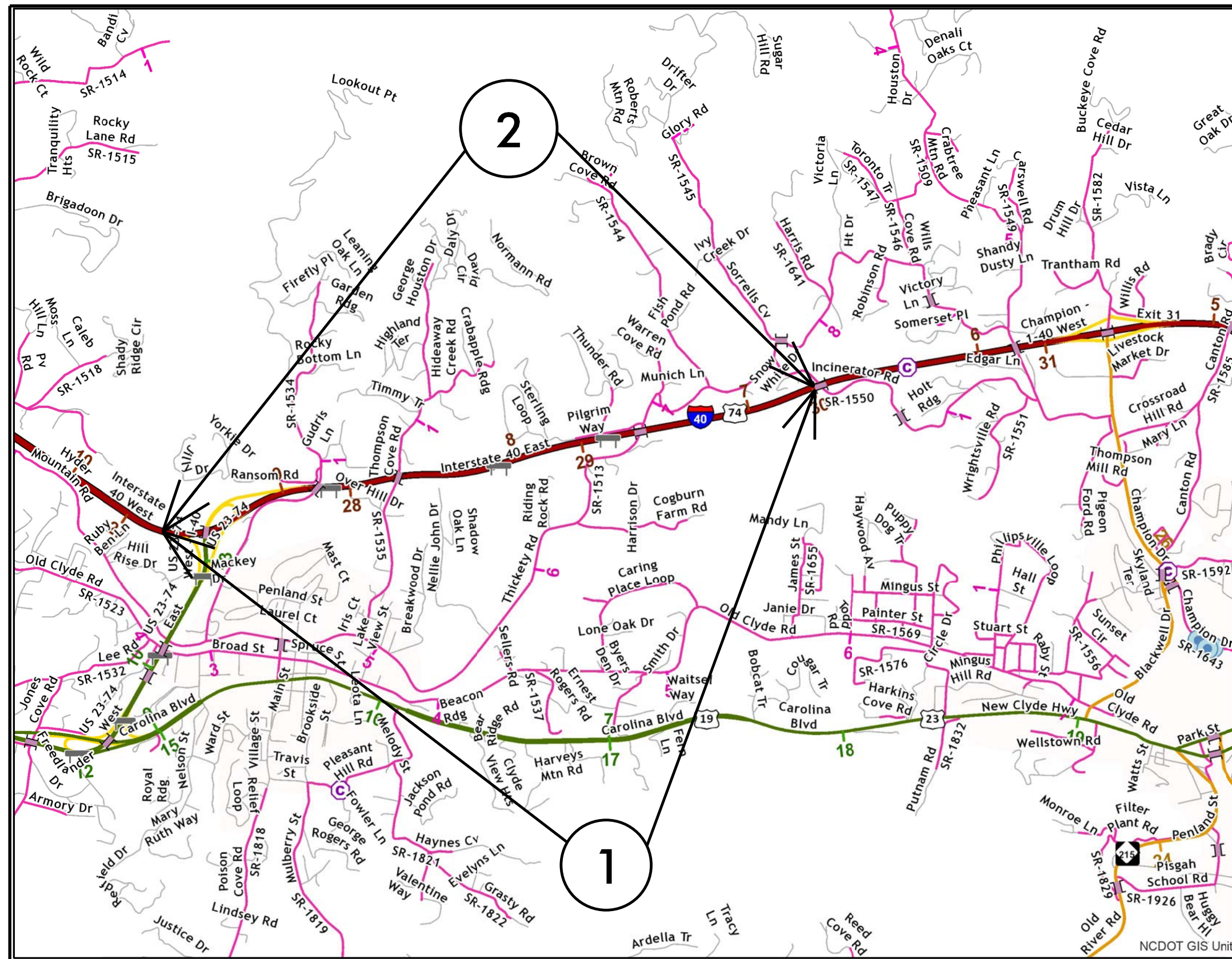


PROJECT REFERENCE NO.		SHEET NO.
53040.3.2		1
STATE PROJECT	F.A. PROJECT NO.	DESCRIPTION
	NHPIM-0040113	CONSTRUCTION

# HAYWOOD COUNTY

TIP PROJECT: I5834A

CONTRACT: C204651



MAP 1



BEG

END

MAP 2



BEG

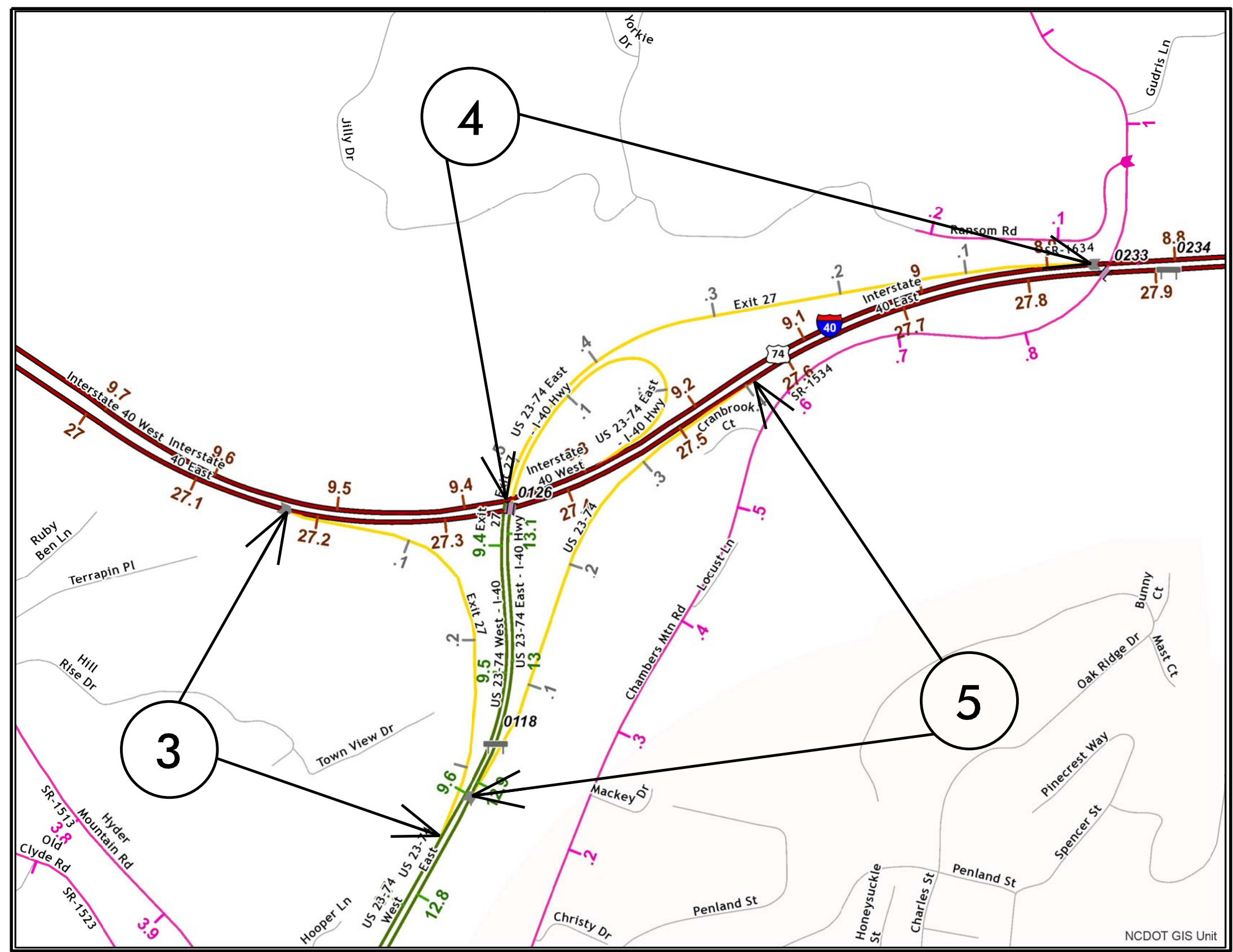
END

PROJECT REFERENCE NO.		SHEET NO.
53040.3.2		2
STATE PROJECT	F.A. PROJECT NO.	DESCRIPTION
	NHPIM-0040113	CONSTRUCTION

# HAYWOOD COUNTY

TIP PROJECT: I5834A

CONTRACT: C204651



MAP 3



BEG

END

MAP 4



BEG

END

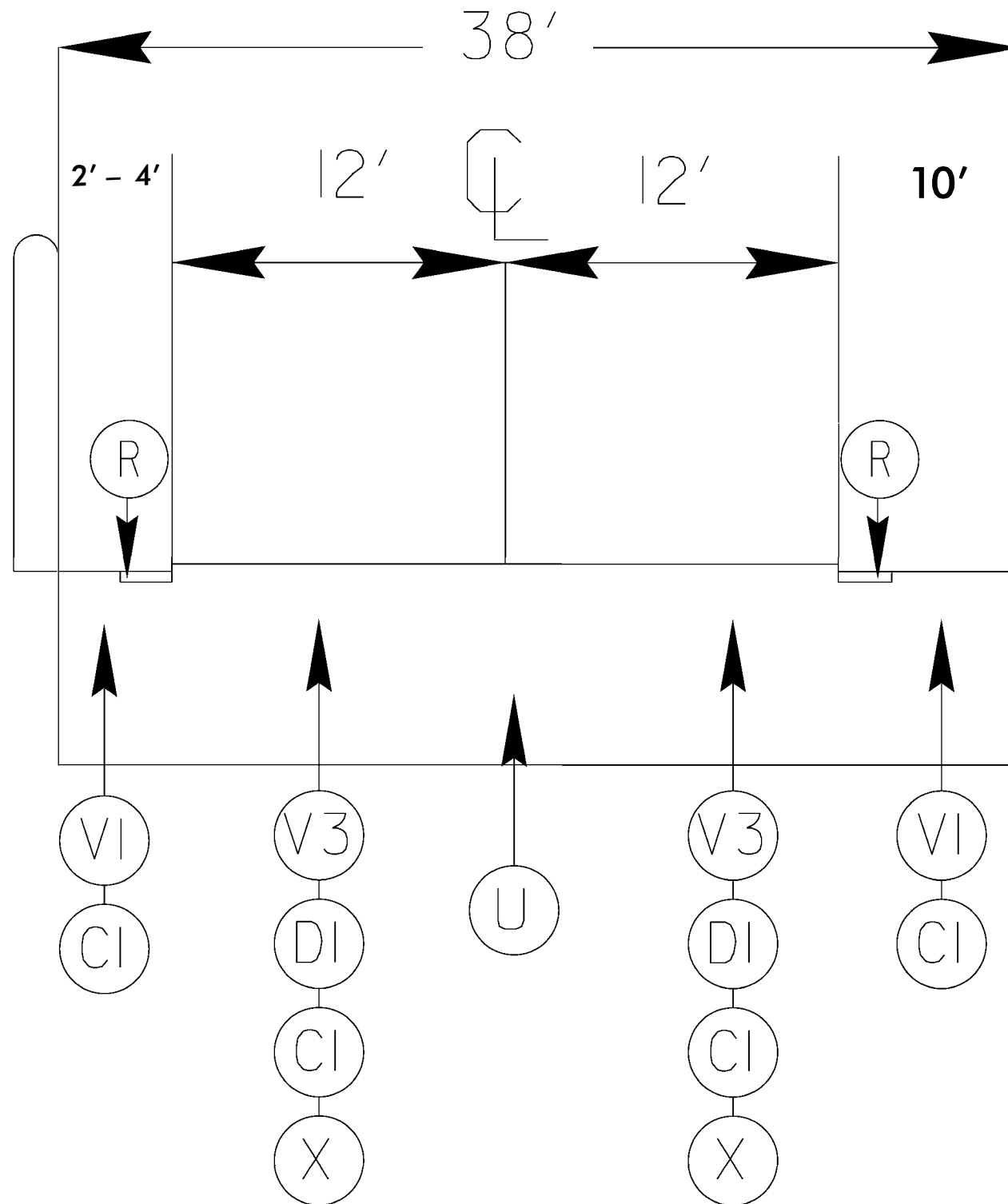
MAP 5



BEG

END

# TYPICAL 1



## SURFACING SCHEDULE

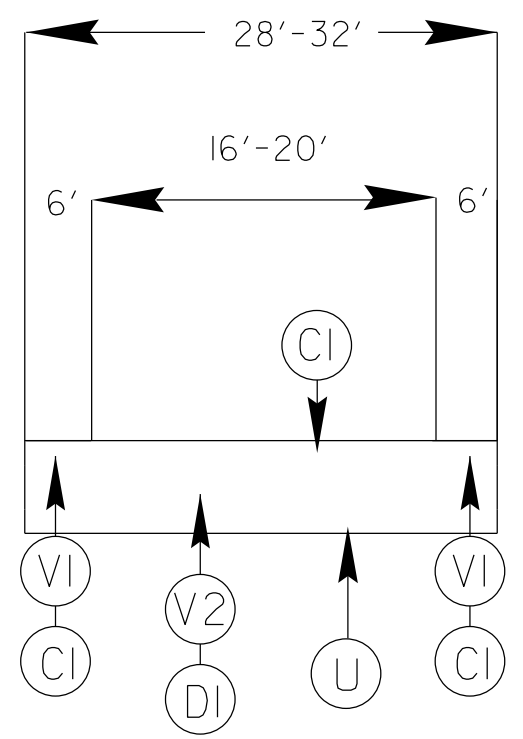
ITEM NO	DESCRIPTION
C1	PROP. APPROX. 1 1/2" ASPHALT CONCRETE SURFACE COURSE, TYPE S9.5D AT AN AVERAGE RATE OF 168 LBS.PER.SQ.YD
D1	PROP. APPROX. 3" ASPHALT CONCRETE INTERMEDIATE COURSE,TYPE I19.OC,AT A AVERAGE RATE OF 342 LBS PER SQ.YD.
V1	MILLED ASPHALT PAVEMENT 1 1/2" IN DEPTH IN LOCATIONS AS DIRECTED BY PROJECT ENGINEER
V2	MILLED ASPHALT PAVEMENT 4 1/2" IN DEPTH IN LOCATIONS AS DIRECTED BY PROJECT ENGINEER
V3	MILLED ASPHALT PAVEMENT 5 1/4" IN DEPTH IN LOCATIONS AS DIRECTED BY PROJECT ENGINEER
X	PROP. APPROX. 3/4" OPEN GRADE FRICTION COURSE, TYPE FC1 MOD AT A AVERAGE RATE OF 90 LBS PER SQ. YD.
R	MILLED RUMBLE STRIPS AS DIRECTED BY PROJECT ENGINEER
U	EXISTING ASPHALT

PROJECT REFERENCE NO.		SHEET NO.
53040.3.2		4
STATE PROJECT	F.A. PROJECT NO.	DESCRIPTION
	NHPIM-0040113	CONSTRUCTION

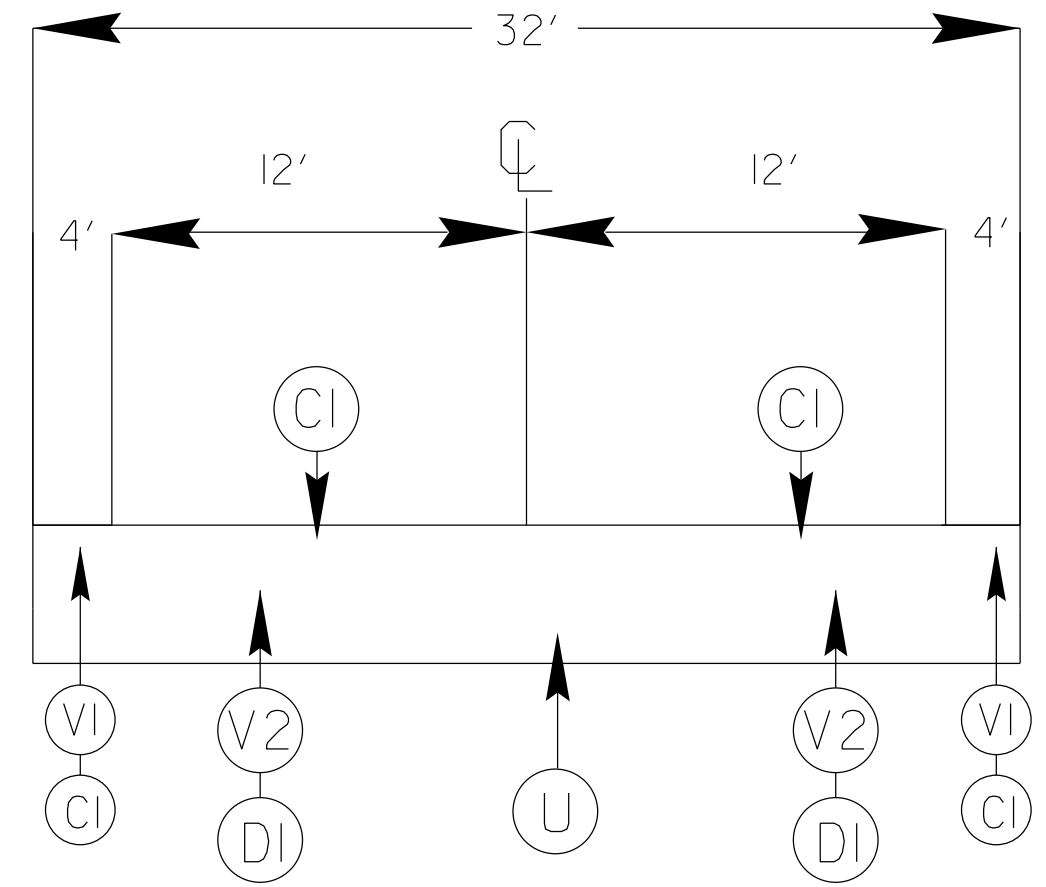
### SURFACING SCHEDULE

ITEM NO	DESCRIPTION
C1	PROP. APPROX. 1 1/2" ASPHALT CONCRETE SURFACE COURSE, TYPE S9.5D AT AN AVERAGE RATE OF 168 LBS.PER.SQ.YD
D1	PROP. APPROX. 3" ASPHALT CONCRETE INTERMEDIATE COURSE,TYPE I19.OC,AT A AVERAGE RATE OF 342 LBS PER SQ.YD.
V1	MILLED ASPHALT PAVEMENT 1 1/2" IN DEPTH IN LOCATIONS AS DIRECTED BY PROJECT ENGINEER
V2	MILLED ASPHALT PAVEMENT 4 1/2" IN DEPTH IN LOCATIONS AS DIRECTED BY PROJECT ENGINEER
V3	MILLED ASPHALT PAVEMENT 5 1/4" IN DEPTH IN LOCATIONS AS DIRECTED BY PROJECT ENGINEER
X	PROP. APPROX. 3/4" OPEN GRADE FRICTION COURSE, TYPE FC1 MOD AT A AVERAGE RATE OF 90 LBS PER SQ. YD.
R	MILLED RUMBLE STRIPS AS DIRECTED BY PROJECT ENGINEER
U	EXISTING ASPHALT

### TYPICAL 2



### TYPICAL 3



PROJECT NO.	SHEET NO.
I-5834A	5

### SUMMARY OF QUANTITIES

PROJECT NO	COUNTY	MAP NO	ROUTE	DESCRIPTION	TYP NO	LANES	LANE TYPE	FINAL SURFACE TESTING REQUIRED	WARM MIX ASPHALT REQUIRED	LENGTH	WIDTH	1297000000-E			1503000000-E	1524200000-E	1575000000-E	1577000000-E	1662000000-E	1840000000-E	0996000000-N	4600000000-N	4600000000-N	4600000000-N	4600000000-N		
												5 .25" MILLING	1 1/2" MILLING	4.5" MILLING	INTERMEDIATE COURSE, 119.0C	SURFACE COURSE, S9.5D	ASPHALT BINDER FOR PLANT MIX	POLYMER MODIFIED ASPHALT BINDER FOR PLANT MIX	OGAFC, TYPE FC-1 MOD	MILLED RUMBLE STRIPS (ASPHALT CEMENT CONCRETE)	PIPE CLEAN OUT	CONNECTED LANE CLOSURE DEVICES	RAMP / LOOP CLOSURE	RAMP / LOOP TRAFFIC CONTROL	SINGLE LANE CLOSURE		
											MI	FT	SY	SY	SY	TONS	TONS	TONS	TONS	TONS	LF	EA	EA	EA	EA	EA	
53040.3.2	Haywood	1	I-40 EAST	FROM MP 27 TO MP 30	1	2	MD	YES	NO	3.02	36	49,609	24,805		8,603	5,914	413	439	1,677	31,891	16	1				60	
<b>TOTAL FOR MAP NO. 1</b>											<b>3.02</b>		<b>49,609</b>	<b>24,805</b>		<b>8,603</b>	<b>5,914</b>	<b>413</b>	<b>439</b>	<b>1,677</b>	<b>31,891</b>	<b>16</b>	<b>1</b>		<b>60</b>		
53040.3.2	Haywood	2	I-40 WEST	FROM MP 27 TO MP 30.02	1	2	MD	YES	NO	3.02	36	49,609	24,805		8,603	5,914	413	439	1,677	31,891	25	1				60	
<b>TOTAL FOR MAP NO. 2</b>											<b>3.02</b>		<b>49,609</b>	<b>24,805</b>		<b>8,603</b>	<b>5,914</b>	<b>413</b>	<b>439</b>	<b>1,677</b>	<b>31,891</b>	<b>25</b>	<b>1</b>		<b>60</b>		
53040.3.2	Haywood	3	RAMP EXIT 27 EAST	FROM I-40 EAST TO US 74	2	1		NO	NO	0.8	24		5,632	5,632	993	1,426	48	81			1						
<b>TOTAL FOR MAP NO. 3</b>											<b>0.8</b>			<b>5,632</b>	<b>5,632</b>	<b>993</b>	<b>1,426</b>	<b>48</b>	<b>81</b>			<b>1</b>					
53040.3.2	Haywood	4	RAMP EXIT 27 WEST	FROM 1-40 WEST TO US 74	3	1		NO	NO	0.8	32		3,755	11,264	2,191	2,897	105	165									
<b>TOTAL FOR MAP NO. 4</b>											<b>0.8</b>			<b>3,755</b>	<b>11,264</b>	<b>2,191</b>	<b>2,897</b>	<b>105</b>	<b>165</b>								
53040.3.2	Haywood	5	RAMP ENTERANCE I-40	FROM US-74 TO I-40 EAST	2	2		NO	NO	0.5	28		3,520	4,693	822	1,810	39	103									
<b>TOTAL FOR MAP NO. 5</b>											<b>0.5</b>			<b>3,520</b>	<b>4,693</b>	<b>822</b>	<b>1,810</b>	<b>39</b>	<b>103</b>								
<b>TOTAL FOR PROJ NO. 53040.3.2</b>											<b>8.14</b>		<b>99,218</b>	<b>62,517</b>	<b>21,589</b>	<b>21,212</b>	<b>17,961</b>	<b>1,018</b>	<b>1,227</b>	<b>3,354</b>	<b>63,782</b>	<b>42</b>	<b>2</b>		<b>120</b>		
<b>GRAND TOTAL</b>											<b>8.14</b>		<b>99,218</b>	<b>62,517</b>	<b>21,589</b>	<b>21,212</b>	<b>17,961</b>	<b>1,018</b>	<b>1,227</b>	<b>3,354</b>	<b>63,782</b>	<b>42</b>	<b>2</b>	<b>10</b>	<b>12</b>	<b>120</b>	

PROJECT NO.	SHEET NO.	TOTAL NO.
I-5834A	6	

### THERMOPLASTIC AND PAINT QUANTITIES

PROJECT NO	COUNTY	MAP NO	ROUTE	DESCRIPTION	TYP NO	LANES	LANE TYPE	LENGTH	WIDTH	440000000-E	442300000-N	442400000-N	443400000-N	451000000-N	468800000-E		469500000-E	470000000-E	472500000-E	481500000-E		482500000-E	484500000-N	489500000-N	525500000-N			
										STATIONARY WORKZONE SIGNING	WORK ZONE DIGITAL SPEED LIMIT SIGNS	WORK ZONE PRESENCE LIGHTING	SEQUENTIAL FLASHING WARNING LIGHTS	LAW ENFORCEMENT	6" X 90 M WHITE THERMO	6" X 90 M YELLOW THERMO	8" X 90 M WHITE THERMO	12" X 90 M WHITE THERMO	THERMO MERGE ARROW 90 M	6" WHITE PAINT	6" YELLOW PAINT	12" WHITE PAINT	PAINTMERGE ARROW	NON-CAST IRON SNOWPLOWABLE PAVEMENT MARKERS	PORTABLE LIGHTING			
								MI	FT	SF	EA	EA	EA	HR	LF	LF	LF	LF	EA	LF	LF	LF	EA	EA	EA	LS		
53040.3.2	Haywood	1	I-40 EAST	FROM MP 27 TO MP 30	1	2	MD	3.02	36	338					7	6	480	19,550	15,946		1,420				594			
<b>TOTAL FOR MAP NO. 1</b>								<b>3.02</b>		<b>338</b>					<b>7</b>	<b>6</b>	<b>480</b>	<b>19,550</b>	<b>15,946</b>		<b>1,420</b>				<b>594</b>			
53040.3.2	Haywood	2	I-40 WEST	FROM MP 27 TO MP 30.02	1	2	MD	3.02	36	338					7	6	480	19,550	15,946		1,420			13	594			
<b>TOTAL FOR MAP NO. 2</b>								<b>3.02</b>		<b>338</b>					<b>7</b>	<b>6</b>	<b>480</b>	<b>19,550</b>	<b>15,946</b>		<b>1,420</b>			<b>13</b>	<b>594</b>			
53040.3.2	Haywood	3	RAMP EXIT 27 EAST	FROM I-40 EAST TO US 74	2	1		0.8	24	16							1,800	1,800	200		2	12,505	12,505	500		40		
<b>TOTAL FOR MAP NO. 3</b>								<b>0.8</b>		<b>16</b>							<b>1,800</b>	<b>1,800</b>	<b>200</b>		<b>2</b>	<b>12,505</b>	<b>12,505</b>	<b>500</b>		<b>40</b>		
53040.3.2	Haywood	4	RAMP EXIT 27 WEST	FROM I-40 WEST TO US 74	3	1		0.8	32	16							8,608	2,715	200			12,505	12,505	500		20		
<b>TOTAL FOR MAP NO. 4</b>								<b>0.8</b>		<b>16</b>							<b>8,608</b>	<b>2,715</b>	<b>200</b>			<b>12,505</b>	<b>12,505</b>	<b>500</b>		<b>20</b>		
53040.3.2	Haywood	5	RAMP ENTERANCE I-40	FROM US-74 TO I-40 EAST	2	2		0.5	28	32							1,650	1,650	200		3	13,364	10,692	500	13	20		
<b>TOTAL FOR MAP NO. 5</b>								<b>0.5</b>		<b>32</b>							<b>1,650</b>	<b>1,650</b>	<b>200</b>		<b>3</b>	<b>13,364</b>	<b>10,692</b>	<b>500</b>	<b>13</b>	<b>20</b>		
<b>TOTAL FOR PROJ NO. 53040.3.2</b>								<b>8.14</b>		<b>740</b>	<b>3</b>	<b>14</b>	<b>12</b>	<b>960</b>			<b>51,158</b>	<b>38,057</b>	<b>600</b>	<b>2,840</b>	<b>5</b>	<b>156,732</b>	<b>130,388</b>	<b>1,500</b>	<b>26</b>	<b>1,268</b>	<b>1</b>	
																<b>89,215</b>					<b>287,120</b>							
<b>GRAND TOTAL</b>								<b>8.14</b>		<b>740</b>	<b>3</b>	<b>14</b>	<b>12</b>	<b>960</b>		<b>51,158</b>	<b>38,057</b>	<b>600</b>	<b>2,840</b>	<b>5</b>	<b>156,732</b>	<b>130,388</b>	<b>1,500</b>	<b>26</b>	<b>1,268</b>	<b>1</b>		
																<b>89,215</b>					<b>287,120</b>							