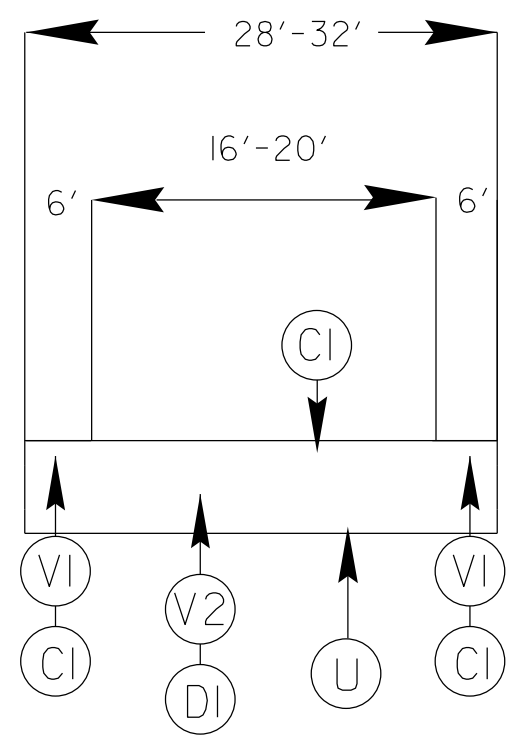


PROJECT REFERENCE NO.		SHEET NO.
53040.3.2		4
STATE PROJECT	F.A. PROJECT NO.	DESCRIPTION
	NHPIM-0040113	CONSTRUCTION

SURFACING SCHEDULE

ITEM NO	DESCRIPTION
C1	PROP. APPROX. 1 1/2" ASPHALT CONCRETE SURFACE COURSE, TYPE S9.5D AT AN AVERAGE RATE OF 168 LBS.PER.SQ.YD
D1	PROP. APPROX. 3" ASPHALT CONCRETE INTERMEDIATE COURSE,TYPE I19.OC,AT A AVERAGE RATE OF 342 LBS PER SQ.YD.
V1	MILLED ASPHALT PAVEMENT 1 1/2" IN DEPTH IN LOCATIONS AS DIRECTED BY PROJECT ENGINEER
V2	MILLED ASPHALT PAVEMENT 4 1/2" IN DEPTH IN LOCATIONS AS DIRECTED BY PROJECT ENGINEER
V3	MILLED ASPHALT PAVEMENT 5 1/4" IN DEPTH IN LOCATIONS AS DIRECTED BY PROJECT ENGINEER
X	PROP. APPROX. 3/4" OPEN GRADE FRICTION COURSE, TYPE FC1 MOD AT A AVERAGE RATE OF 90 LBS PER SQ. YD.
R	MILLED RUMBLE STRIPS AS DIRECTED BY PROJECT ENGINEER
U	EXISTING ASPHALT

TYPICAL 2



TYPICAL 3

