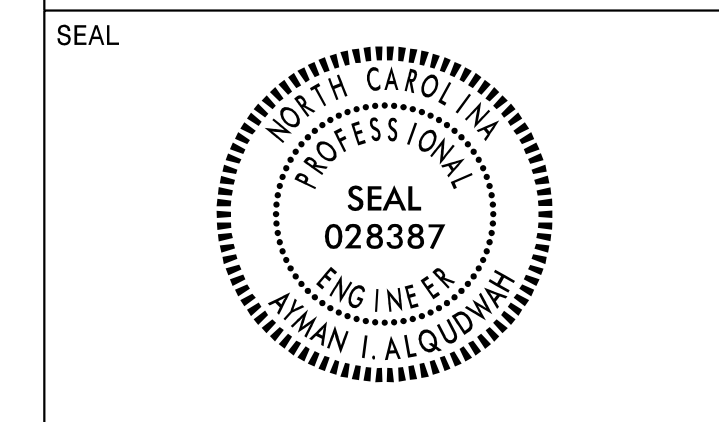


APPROVED: *Ayman Alqudwah*
 DATE: 7/26/2021



**DOCUMENT NOT CONSIDERED FINAL
UNLESS ALL SIGNATURES COMPLETED**

SIGN NUMBER: 112
TYPE: A
QUANTITY: 1
SIGN WIDTH: 12'-0"
HEIGHT: 3'-0"
TOTAL AREA: 36.0 Sq.Ft.
BORDER TYPE: FLUSH
RECESS: 0"
WIDTH: 1"
RADII: 3"
NO. Z BARS: 2
LENGTH: 136.0

BACKG COLOR: Green
COPY COLOR: White

SYMBOL	X	Y	WID	HT

DESIGN BY: S.Johns
PROJECT ID: I-5932B
CHECKED BY: A.Alqudwah
LOCATION: I-95 - Halifax Co.
JUN 16, 2021
DIV: 4

USE NOTES:
 1. Legend and border(except those that are colored black) shall be direct applied Grade C sheeting.
 2. Background shall be Grade C reflective sheeting.
 3. Shields; A, B, and C type arrows shall be on 0.032" (0.8mm) aluminum and demountable.

Spacing Factor is 1 unless specified otherwise

LETTER POSITIONS

Letter spacings are to start of next letter

Series/Size	Text	Length
D 2000	R o a n o k e R a p i d s	79.4
D 2000	R i c h m o n d	47.2
D 2000	2 2	12.5
D 2000	1 0 1	13

FILENAME: I-95_Exits 154 to Exit 168 Sign Design NORTH CAROLINA D.O.T. SIGN DETAIL

SIGN NUMBER: 113A
TYPE: B
QUANTITY: 1
SIGN WIDTH: 10'-0"
HEIGHT: 2'-6"
TOTAL AREA: 25.0 Sq.Ft.
BORDER TYPE: FLUSH
RECESS: 0"
WIDTH: 2"
RADII: 3"
NO. Z BARS: 2
LENGTH: 112.0

BACKG COLOR: Green
COPY COLOR: White

SYMBOL	X	Y	WID	HT

DESIGN BY: S.Johns
PROJECT ID: I-5932B
CHECKED BY: A.Alqudwah
LOCATION: I-95 - Halifax Co.
JUN 16, 2021
DIV: 4

USE NOTES:
 1. Legend and border(except those that are colored black) shall be direct applied Grade C sheeting.
 2. Background shall be Grade C reflective sheeting.
 3. Shields; A, B, and C type arrows shall be on 0.032" (0.8mm) aluminum and demountable.

Spacing Factor is 1 unless specified otherwise

LETTER POSITIONS

Letter spacings are to start of next letter

Series/Size	Text	Length
E 2000	E X I T 1 6 0	81.3

FILENAME: I-95_Exits 154 to Exit 168 Sign Design NORTH CAROLINA D.O.T. SIGN DETAIL

SIGN NUMBER: 113B
TYPE: A
QUANTITY: 1
SIGN WIDTH: 13'-6"
HEIGHT: 7'-0"
TOTAL AREA: 94.5 Sq.Ft.
BORDER TYPE: FLUSH
RECESS: 0"
WIDTH: 2"
RADII: 6"
NO. Z BARS: 2
LENGTH: 154.0

BACKG COLOR: Green
COPY COLOR: White

SYMBOL	X	Y	WID	HT
M1-5-3-24-7C	63	37.2	36	36

DESIGN BY: S.Johns
PROJECT ID: I-5932B
CHECKED BY: A.Alqudwah
LOCATION: I-95 - Halifax Co.
JUN 16, 2021
DIV: 4

USE NOTES:
 1. Legend and border(except those that are colored black) shall be direct applied Grade C sheeting.
 2. Background shall be Grade C reflective sheeting.
 3. Shields; A, B, and C type arrows shall be on 0.032" (0.8mm) aluminum and demountable.

Spacing Factor is 1 unless specified otherwise

LETTER POSITIONS

Letter spacings are to start of next letter

Series/Size	Text	Length
E 2000	1 1/4 M I L E S	91.6

FILENAME: I-95_Exits 154 to Exit 168 Sign Design NORTH CAROLINA D.O.T. SIGN DETAIL

SIGN NUMBER: 114
TYPE: B
QUANTITY: 1
SIGN WIDTH: 11'-0"
HEIGHT: 4'-6"
TOTAL AREA: 49.5 Sq.Ft.
BORDER TYPE: FLUSH
RECESS: 0"
WIDTH: 2"
RADII: 6"
NO. Z BARS: 2
LENGTH: 124.0

BACKG COLOR: Green
COPY COLOR: White

SYMBOL	X	Y	WID	HT

DESIGN BY: S.Johns
PROJECT ID: I-5932B
CHECKED BY: A.Alqudwah
LOCATION: I-95 - Halifax Co.
JUN 16, 2021
DIV: 4

USE NOTES:
 1. Legend and border(except those that are colored black) shall be direct applied Grade C sheeting.
 2. Background shall be Grade C reflective sheeting.
 3. Shields; A, B, and C type arrows shall be on 0.032" (0.8mm) aluminum and demountable.

Spacing Factor is 1 unless specified otherwise

LETTER POSITIONS

Letter spacings are to start of next letter

Series/Size	Text	Length
EM 2000	L o u i s b u r g	102.9
EM 2000	E X I T 1 6 0	65.3

FILENAME: I-95_Exits 154 to Exit 168 Sign Design NORTH CAROLINA D.O.T. SIGN DETAIL

07/26/21
 S:\S&LU\Eastern\Div 4\I-5932B\I-5932B_Sign-3-3C.dgn
 Users\johns

SIGN DESIGNS