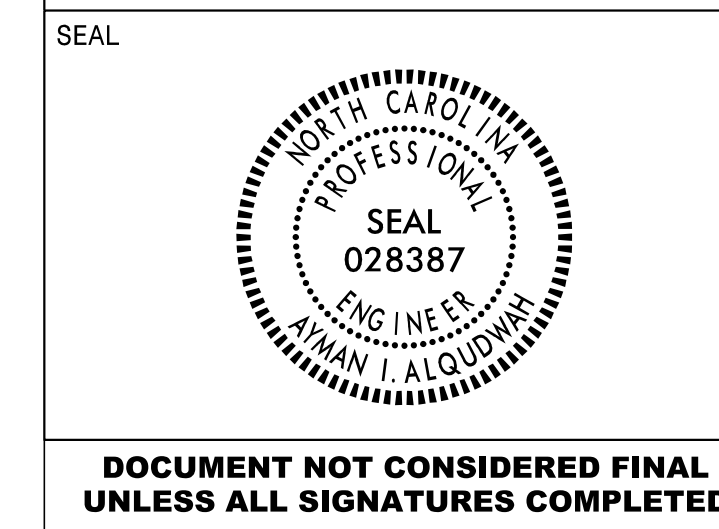


APPROVED: *Ayman Alqudwah*  
DATE: 7/26/2021



DOCUMENT NOT CONSIDERED FINAL UNLESS ALL SIGNATURES COMPLETED

**SIGN NUMBER:** 314      **BACKG COLOR:** Green / Green  
**TYPE:** D      **COPY COLOR:** White  
**QUANTITY:** 1

| SYMBOL    | X    | Y    | WID | HT |
|-----------|------|------|-----|----|
| AR_Type D | 20.2 | 28.2 | 6   | 9  |
| AR_Type D | 79.3 | 9.3  | 6   | 9  |

**SIGN WIDTH:** 8'-6"  
**HEIGHT:** 3'-6"  
**TOTAL AREA:** 29.8 Sq.Ft.

**BORDER TYPE:** FLUSH  
**RECESS:** 0"  
**WIDTH:** 1"  
**RADII:** 3"

**NO. Z BARS:**      **MAT'L:** 0.125" (3.2 mm) ALUMINUM  
**LENGTH:**

**DESIGN BY:** S.Johns      **CHECKED BY:** A. Alqudwah      **Jun 16, 2021**  
**PROJECT ID:** I-5932A      **LOCATION:** I-95 - Halifax Co.      **DIV:** 4

**USE NOTES:**  
1. Legend and border(except those that are colored black) shall be direct applied Grade C sheeting.  
2. Background shall be Grade C reflective sheeting.

Spacing Factor is 1 unless specified otherwise

**LETTER POSITIONS**

| Letter spacings are to start of next letter |     |     |     |     |     |     |      |     |     |     |     |      | Series/Size |        |        |        |
|---|-----|-----|-----|-----|-----|-----|------|-----|-----|-----|-----|------|-------------|--------|--------|--------|
|   |     |     |     |     |     |     |      |     |     |     |     |      | Text Length |        |        |        |
|   | R   | o   | c   | k   | y   |     | M    | o   | u   | n   | t   |      |             | D 2000 |        |        |
| 32.2  | 4.7 | 4.4 | 4.3 | 4.1 | 4.5 | 6   | 5.8  | 4.6 | 4.7 | 4.1 | 2.4 | 20.2 |             | 49.6   |        |        |
|   | R   | o   | a   | n   | o   | k   | e    |     | R   | a   | p   | i    | d           | s      | D 2000 |        |
| 13.7  | 4.7 | 4.3 | 4.6 | 4.4 | 4.6 | 4.3 | 3.5  | 6   | 4.7 | 4.6 | 4.6 | 1.9  | 4.4         | 2.8    | 28.7   | 59.5   |
|   | W   | e   | l   | d   | o   | n   |      |     |     |     |     |      |             |        |        | D 2000 |
| 31.1  | 5.9 | 4.4 | 1.9 | 4.6 | 4.6 | 3.5 | 46.1 |     |     |     |     |      |             |        |        | 24.9   |

FILENAME: I-95\_Exits 154 to Exit 168 Sign Design      NORTH CAROLINA D.O.T. SIGN DETAIL

**SIGN NUMBER:** 316      **BACKG COLOR:** Green / Green  
**TYPE:** D      **COPY COLOR:** White  
**QUANTITY:** 1

| SYMBOL    | X    | Y    | WID | HT |
|-----------|------|------|-----|----|
| AR_Type D | 12.2 | 20.1 | 6   | 9  |
| AR_Type D | 71.3 | 3.9  | 6   | 9  |

**SIGN WIDTH:** 8'-0"  
**HEIGHT:** 3'-0"  
**TOTAL AREA:** 24.0 Sq.Ft.

**BORDER TYPE:** FLUSH  
**RECESS:** 0"  
**WIDTH:** 0.75"  
**RADII:** 3"

**NO. Z BARS:**      **MAT'L:** 0.125" (3.2 mm) ALUMINUM  
**LENGTH:**

**DESIGN BY:** S.Johns      **CHECKED BY:** A. Alqudwah      **Jun 15, 2021**  
**PROJECT ID:** I-5932A      **LOCATION:** I-95 - Halifax Co.      **DIV:** 4

**USE NOTES:**  
1. Legend and border(except those that are colored black) shall be direct applied Grade C sheeting.  
2. Background shall be Grade C reflective sheeting.

Spacing Factor is 1 unless specified otherwise

**LETTER POSITIONS**

| Letter spacings are to start of next letter |     |     |     |     |     |     |      |     |     |     |     |      | Series/Size |     |        |        |
|---|-----|-----|-----|-----|-----|-----|------|-----|-----|-----|-----|------|-------------|-----|--------|--------|
|   |     |     |     |     |     |     |      |     |     |     |     |      | Text Length |     |        |        |
|   | R   | o   | a   | n   | o   | k   | e    |     | R   | a   | p   | i    | d           | s   | D 2000 |        |
| 24.2  | 4.7 | 4.3 | 4.6 | 4.4 | 4.6 | 4.3 | 3.5  | 6   | 4.7 | 4.6 | 4.6 | 1.9  | 4.4         | 2.8 | 32.2   | 59.5   |
|   | W   | e   | l   | d   | o   | n   |      |     |     |     |     |      |             |     |        | D 2000 |
| 41.6  | 5.9 | 4.4 | 1.9 | 4.6 | 4.6 | 3.5 | 29.5 |     |     |     |     |      |             |     |        | 24.9   |
|   | R   | o   | c   | k   | y   |     | M    | o   | u   | n   | t   |      |             |     |        | D 2000 |
| 15.7  | 4.7 | 4.4 | 4.3 | 4.1 | 4.5 | 6   | 5.8  | 4.6 | 4.7 | 4.1 | 2.4 | 30.7 |             |     |        | 49.6   |

FILENAME: I-95\_Exits 154 to Exit 168 Sign Design      NORTH CAROLINA D.O.T. SIGN DETAIL

**SIGN NUMBER:** 315      **BACKG COLOR:** Green / Green  
**TYPE:** D      **COPY COLOR:** White  
**QUANTITY:** 1

| SYMBOL    | X    | Y    | WID | HT |
|-----------|------|------|-----|----|
| AR_Type D | 21.7 | 16.9 | 6   | 9  |
| AR_Type D | 12.7 | 4.1  | 6   | 9  |

**SIGN WIDTH:** 7'-6"  
**HEIGHT:** 2'-6"  
**TOTAL AREA:** 18.8 Sq.Ft.

**BORDER TYPE:** FLUSH  
**RECESS:** 0"  
**WIDTH:** 1"  
**RADII:** 3"

**NO. Z BARS:**      **MAT'L:** 0.125" (3.2 mm) ALUMINUM  
**LENGTH:**

**DESIGN BY:** S.Johns      **CHECKED BY:** A. Alqudwah      **Jun 16, 2021**  
**PROJECT ID:** I-5932A      **LOCATION:** I-95 - Halifax Co.      **DIV:** 4

**USE NOTES:**  
1. Legend and border(except those that are colored black) shall be direct applied Grade C sheeting.  
2. Background shall be Grade C reflective sheeting.

Spacing Factor is 1 unless specified otherwise

**LETTER POSITIONS**

| Letter spacings are to start of next letter |     |     |     |     |     |     |     |     |     |      |     |      | Series/Size |        |        |      |
|---|-----|-----|-----|-----|-----|-----|-----|-----|-----|------|-----|------|-------------|--------|--------|------|
|   |     |     |     |     |     |     |     |     |     |      |     |      | Text Length |        |        |      |
|   | L   | o   | u   | i   | s   | b   | u   | r   | g   |      |     |      |             | D 2000 |        |      |
| 33.7  | 4.3 | 4.6 | 4.7 | 1.8 | 3.6 | 4.5 | 4.7 | 2.8 | 3.6 | 21.7 |     |      |             | 34.6   |        |      |
|   | R   | o   | c   | k   | y   |     | M   | o   | u   | n    | t   |      |             |        | D 2000 |      |
| 27.7  | 4.7 | 4.4 | 4.3 | 4.1 | 4.5 | 6   | 5.8 | 4.6 | 4.7 | 4.1  | 2.4 | 12.7 |             |        |        | 49.6 |

FILENAME: I-95\_Exits 154 to Exit 168 Sign Design      NORTH CAROLINA D.O.T. SIGN DETAIL

**SIGN NUMBER:** 317      **BACKG COLOR:** Green  
**TYPE:** D      **COPY COLOR:** White  
**QUANTITY:** 1

| SYMBOL    | X    | Y | WID | HT |
|-----------|------|---|-----|----|
| AR_Type D | 13.7 | 9 | 6   | 9  |

**SIGN WIDTH:** 8'-6"  
**HEIGHT:** 2'-0"  
**TOTAL AREA:** 17.0 Sq.Ft.

**BORDER TYPE:** FLUSH  
**RECESS:** 0"  
**WIDTH:** 1"  
**RADII:** 3"

**NO. Z BARS:**      **MAT'L:** 0.125" (3.2 mm) ALUMINUM  
**LENGTH:**

**DESIGN BY:** S.Johns      **CHECKED BY:** A. Alqudwah      **Jun 16, 2021**  
**PROJECT ID:** I-5932A      **LOCATION:** I-95 - Halifax Co.      **DIV:** 4

**USE NOTES:**  
1. Legend and border(except those that are colored black) shall be direct applied Grade C sheeting.  
2. Background shall be Grade C reflective sheeting.

Spacing Factor is 1 unless specified otherwise

**LETTER POSITIONS**

| Letter spacings are to start of next letter |     |     |     |     |     |     |      |   |     |     |     |     | Series/Size |     |        |        |
|---|-----|-----|-----|-----|-----|-----|------|---|-----|-----|-----|-----|-------------|-----|--------|--------|
|   |     |     |     |     |     |     |      |   |     |     |     |     | Text Length |     |        |        |
|   | R   | o   | a   | n   | o   | k   | e    |   | R   | a   | p   | i   | d           | s   | D 2000 |        |
| 28.7  | 4.7 | 4.3 | 4.6 | 4.4 | 4.6 | 4.3 | 3.5  | 6 | 4.7 | 4.6 | 4.6 | 1.9 | 4.4         | 2.8 | 33.7   | 59.5   |
|   | W   | e   | l   | d   | e   | n   |      |   |     |     |     |     |             |     |        | D 2000 |
| 46.2  | 5.9 | 4.4 | 1.9 | 4.6 | 4.4 | 3.5 | 31.2 |   |     |     |     |     |             |     |        | 24.7   |

FILENAME: I-95\_Exits 154 to Exit 168 Sign Design      NORTH CAROLINA D.O.T. SIGN DETAIL

Q:\26\21\Users\johns\My Documents\I-95\I-9532A\I-5932A\_Sign\_3H.dgn  
 S:\S&LU\Eastern\Div 4\I-5932A\I-5932A\_Sign\_3H.dgn  
 Users\johns

# SIGN DESIGNS