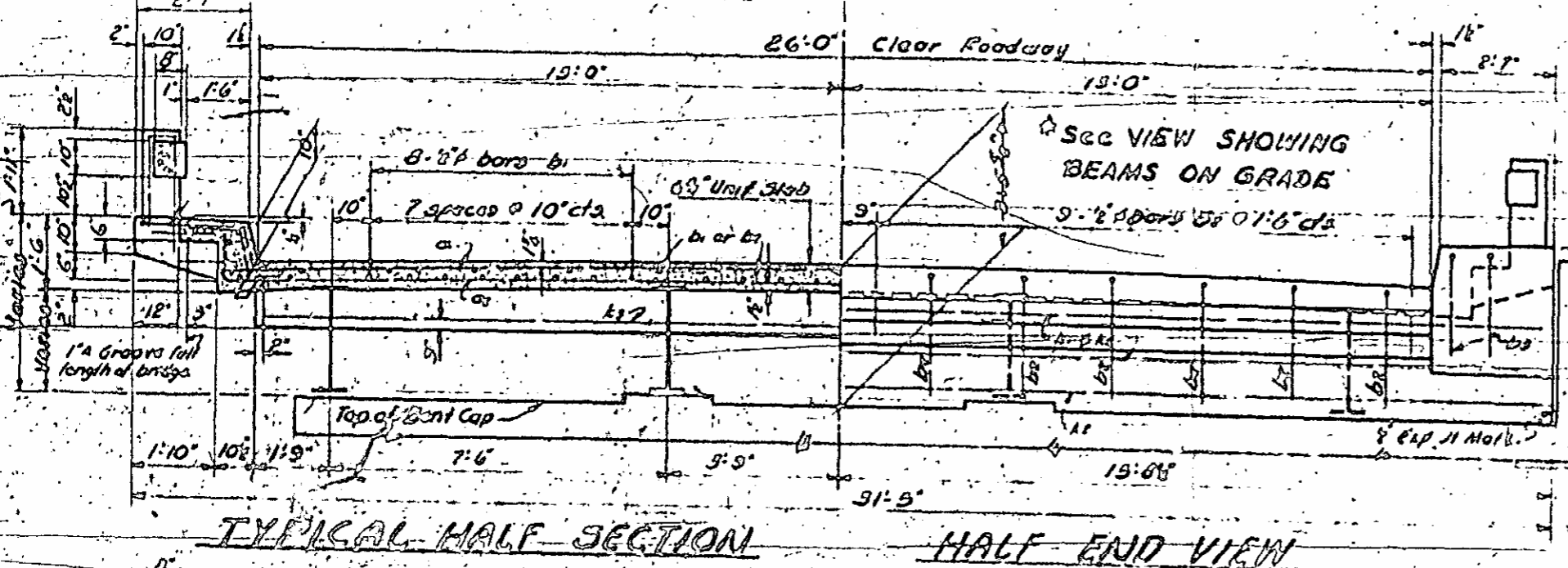


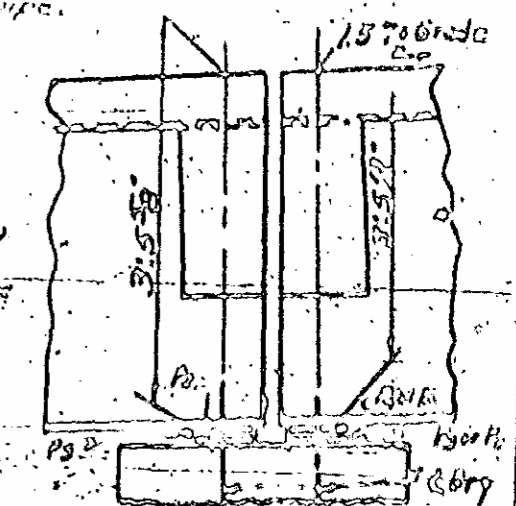
REPAIRING PLATE LAYOUT

SPECIAL	ASSEMBLED BY <i>John H. ...</i> CHECKED BY <i>John H. ...</i>	DATE <i>May 22</i> DATE <i>June 12</i>
STANDARD	DESIGNED BY <i>John H. ...</i> DRAWN BY <i>John H. ...</i> CHECKED BY <i>John H. ...</i>	DATE <i>May 22</i> DATE <i>June 12</i> DATE <i>June 12</i>

See H. ...

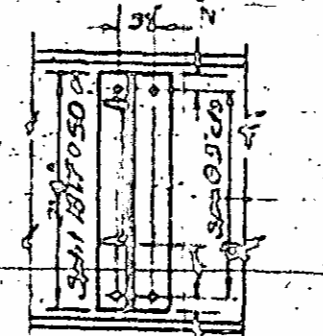
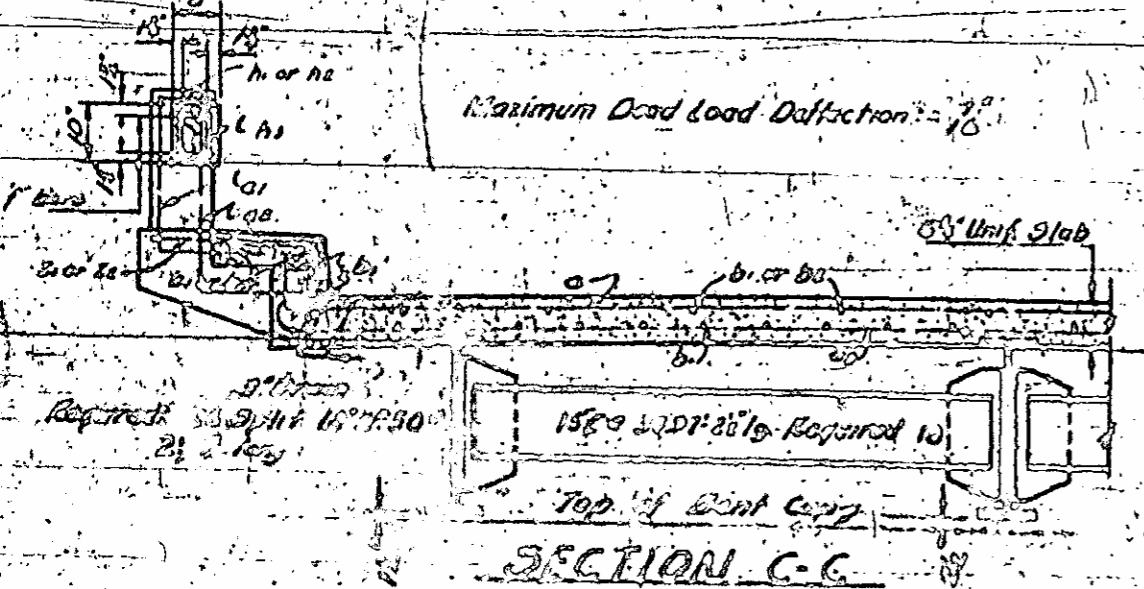


**COPPER FLASHING**  
 REQUIRED 5 lbs 21' x 1/2"  
 Note: Copper flashing to be in accordance with the spec's Copper flashing shall be placed in expansion joints between spans as shown

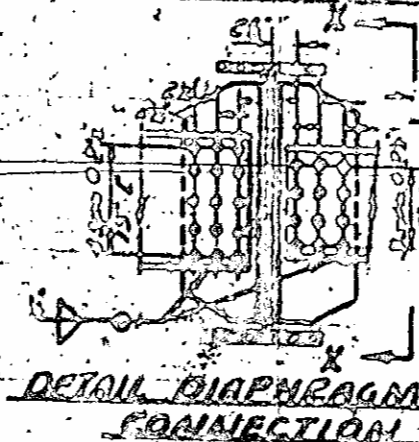


**VIEW SHOWING BEAMS ON GRADE**  
 Assumed live load - HS 20  
 NOTE: For other design data and general notes, see sheet 5-N.

**TYPICAL HALF SECTION**      **HALF END VIEW**



**SECTION X-X**



**DETAIL DIAPHRAGM CONNECTION**

**BILL OF MATERIAL FOR SIX SPANS @ 45'0"**

Bar No	Size	Type	Length	Weight
a	500	40	1	1680
or	513	40	2	16970
b	553	30	4	8063
bc	26	30	4	430
bd	8	30	4	130
c	230	30	4	539
d	220	30	4	623
e	16	30	4	764
f	130	30	4	1247
g	3	30	9	8
h	103	30	9	111
ia	500	30	9	230
ki	8	40	16	88
kl	16	30	17	309
ks	20	30	9	786
l	180	40	7	101
or	26	40	6	10
m	4	30	9	34
n	103	30	9	786

**TABLE OF BEARING PLATES**

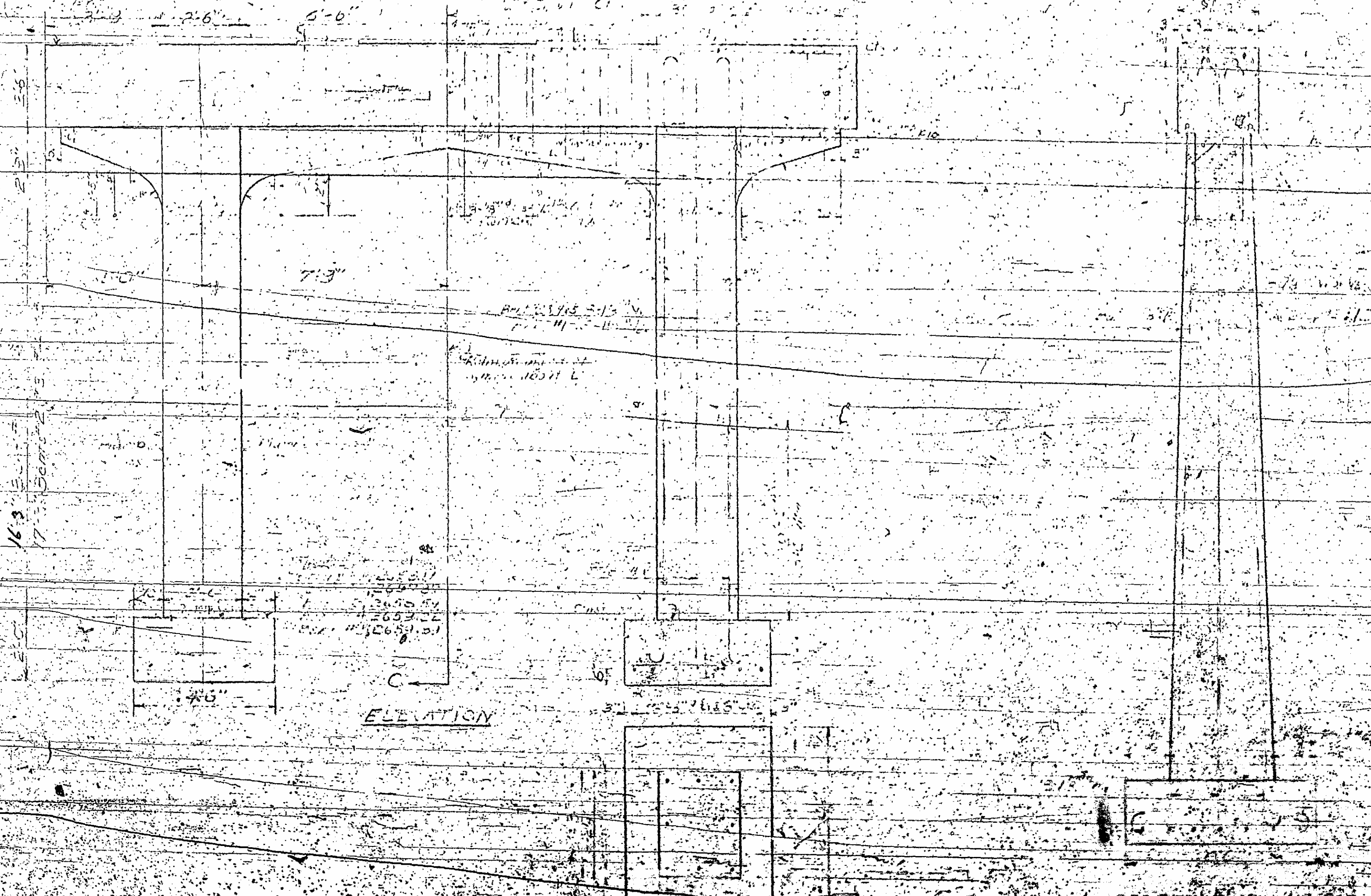
No	Size	Spots
8 P.	8" x 15" x 1/2"	Welded 24
20 P.	8" x 15" x 1/2"	Welded 24
24 P.	8" x 15" x 1/2"	Flt 3/4
10 P.	8" x 15" x 1/2"	Welded 24
4 P.	8" x 15" x 1/2"	Welded 24
24 P.	8" x 15" x 1/2"	Flt 3/4

**PROJECT NO. 7125**  
**ASHE COUNTY**  
**STATION: 31+19**

STATE OF NORTH CAROLINA  
**STATE HIGHWAY AND PUBLIC WORKS COMMISSION**  
**STANDARD I-BEAM SUPERSTRUCTURE WITH R.C. FLOOR AND RAIL 26' ROADWAY**

NOTE: At the contractor's option, shop connections of slab 18" W channels may be either welded or riveted with 1/2" bolts.  
 Field connections of diaphragms to beams shall be welded using F36 turned bolts, turned rivet bolts.

Copper Flashing placed parallel to crown of roadway.

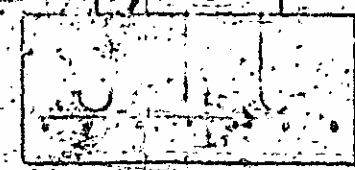


2.6" 0.6"

16.3" 3.0" 17.3" 3.0" 2.0"

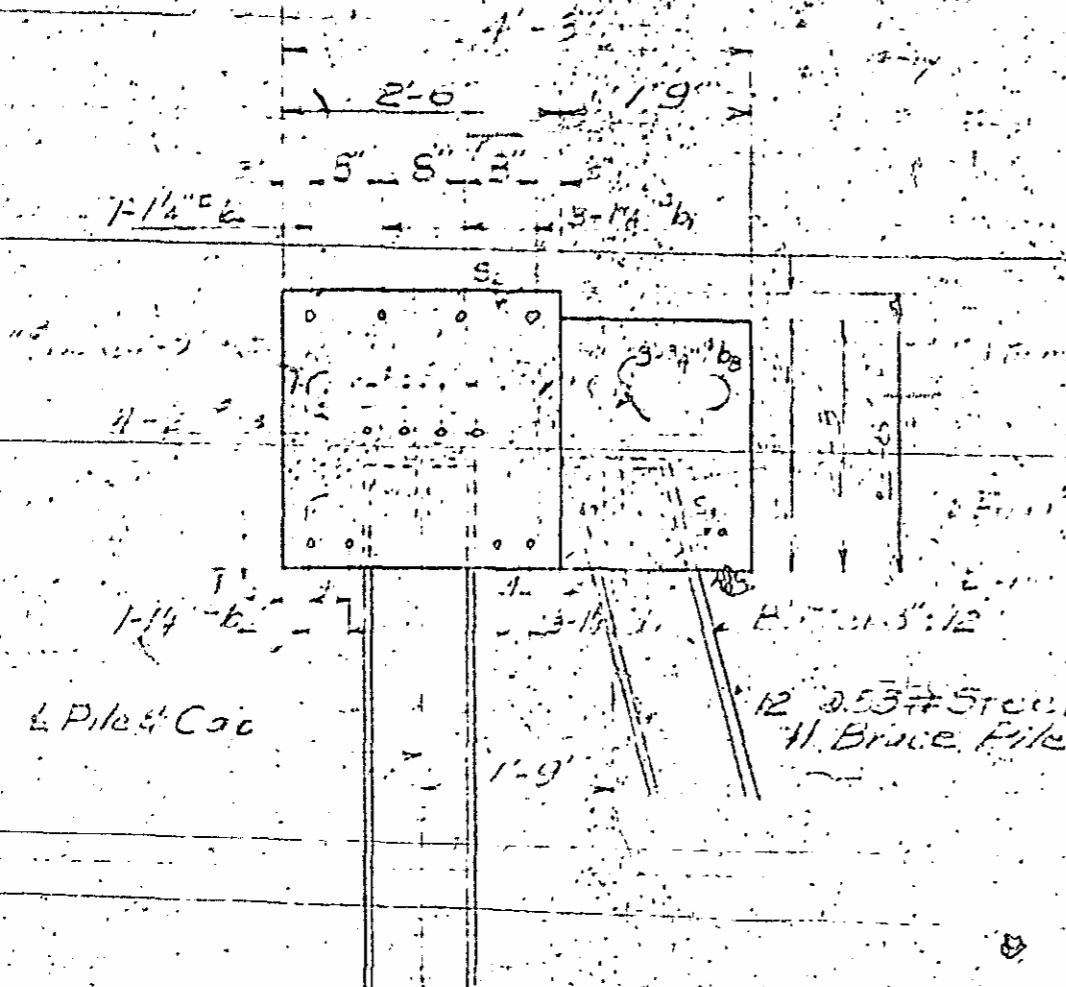


ELEVATION



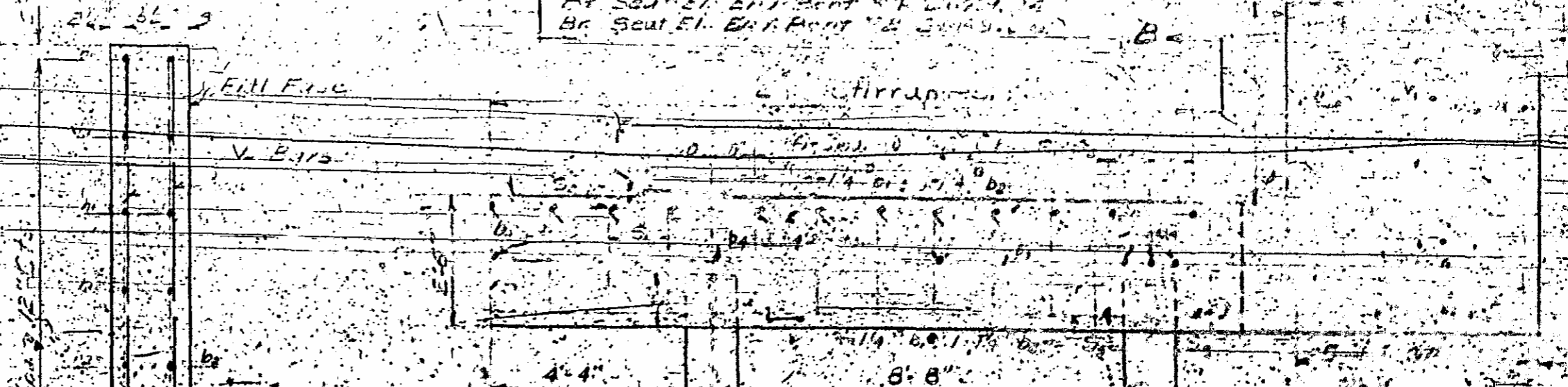
SECTION 1/4" = 1" (L.O.C.C.)

REV	BY	DATE
3	N.C.	



SECTION B-B

FR. SECT. EL. END POINT OF BENT CAP  
BR. SECT. EL. END POINT OF BRIDGE PILE



BILL OF MATERIAL  
FOR END BENT TORZ

Bar	No.	Size	Type	Length	Weight
a	6	14 <sup>#</sup>		32'-4"	1031
b	2	14 <sup>#</sup>	str.	41'-0"	436
b <sub>s</sub>	1	12 <sup>#</sup>	str.	29'-0"	78