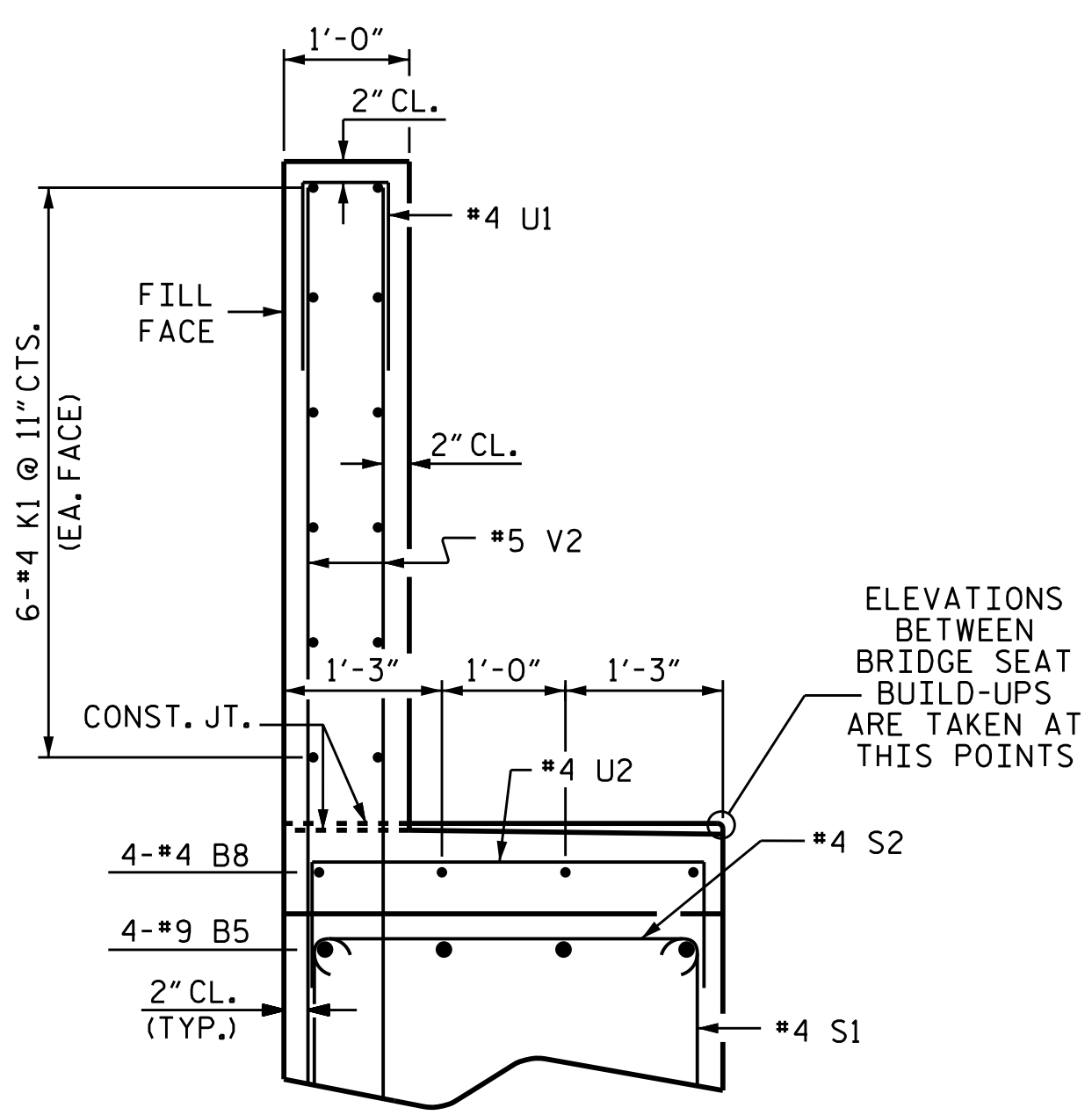
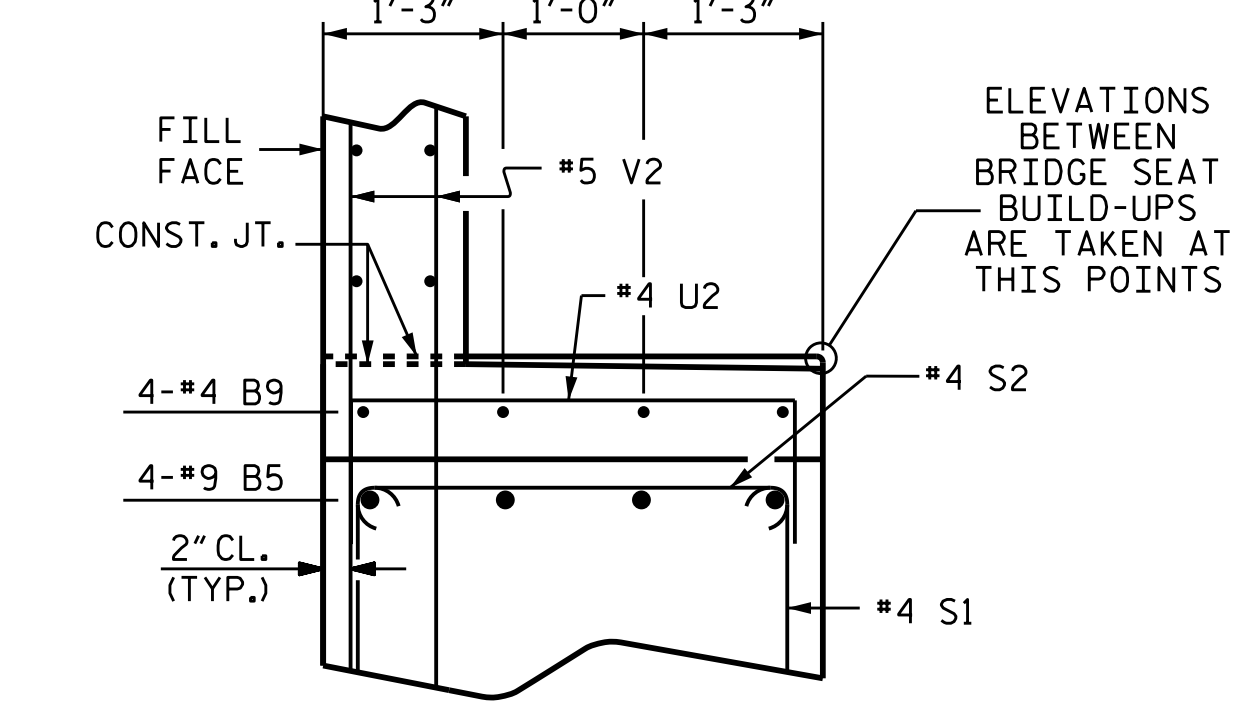


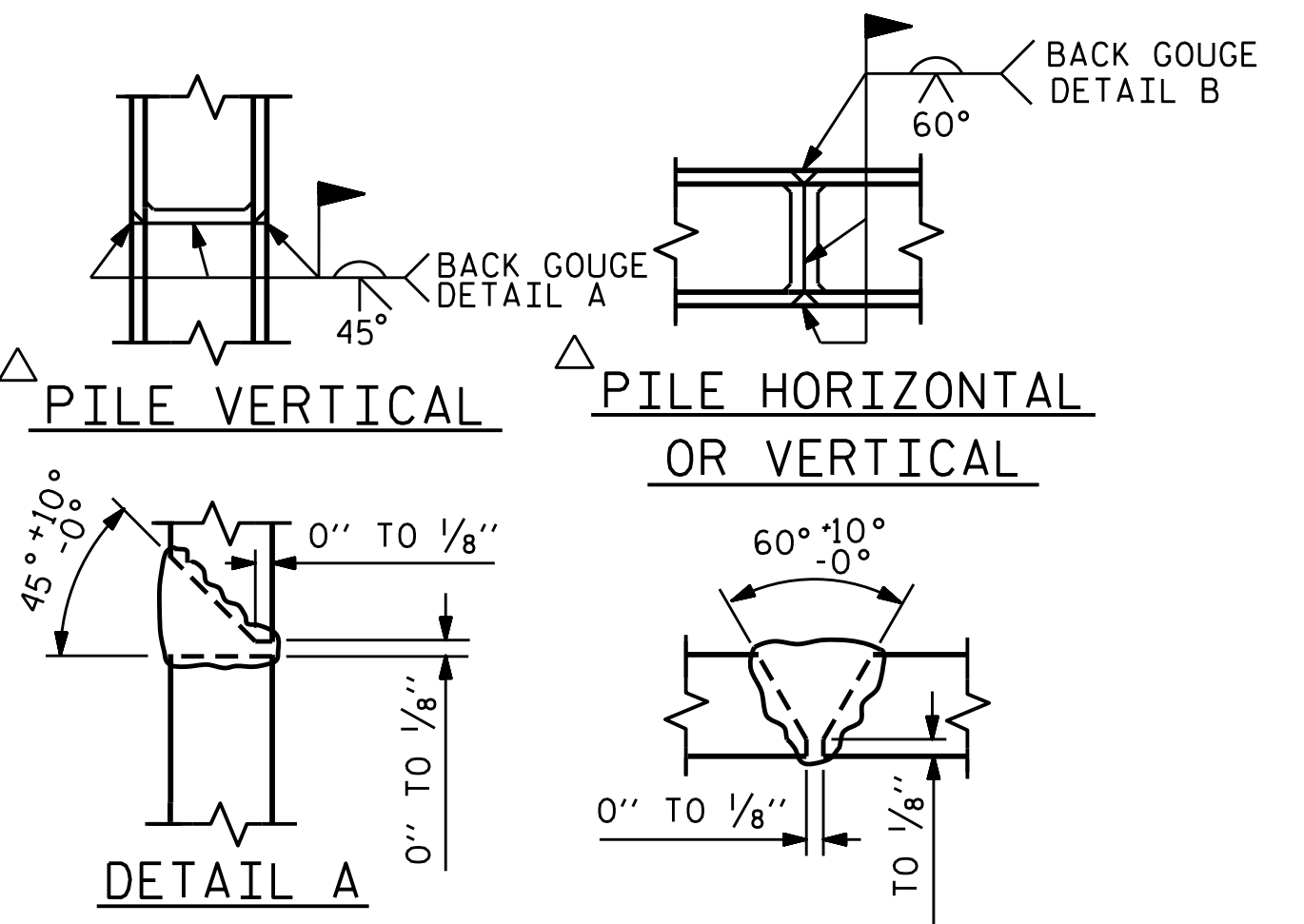
SECTION A-A



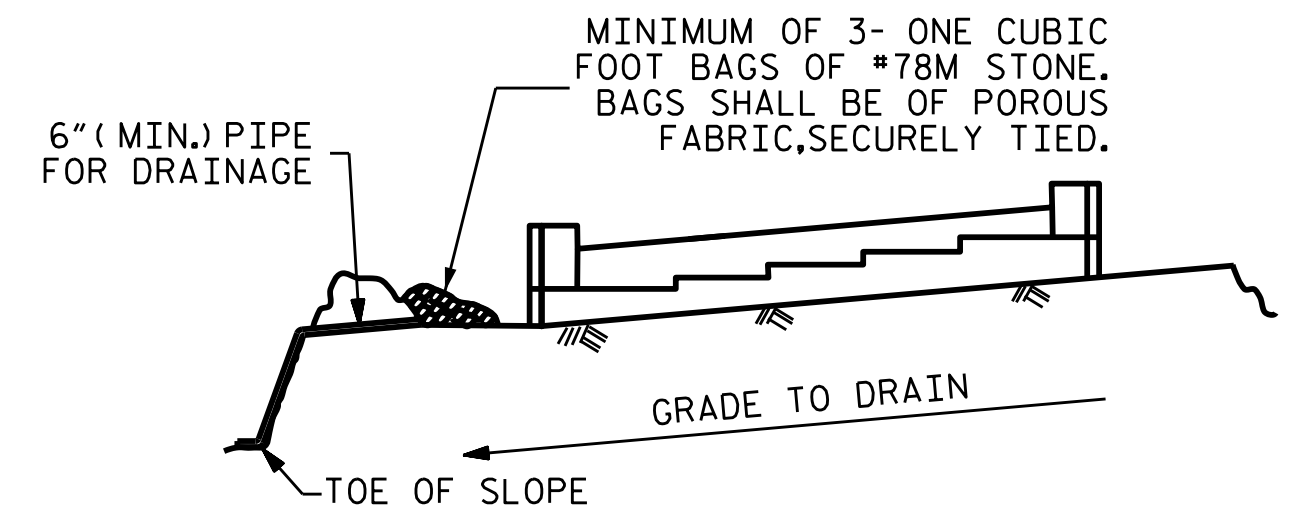
SECTION B-B



SECTION C-C



PILE SPLICE DETAILS

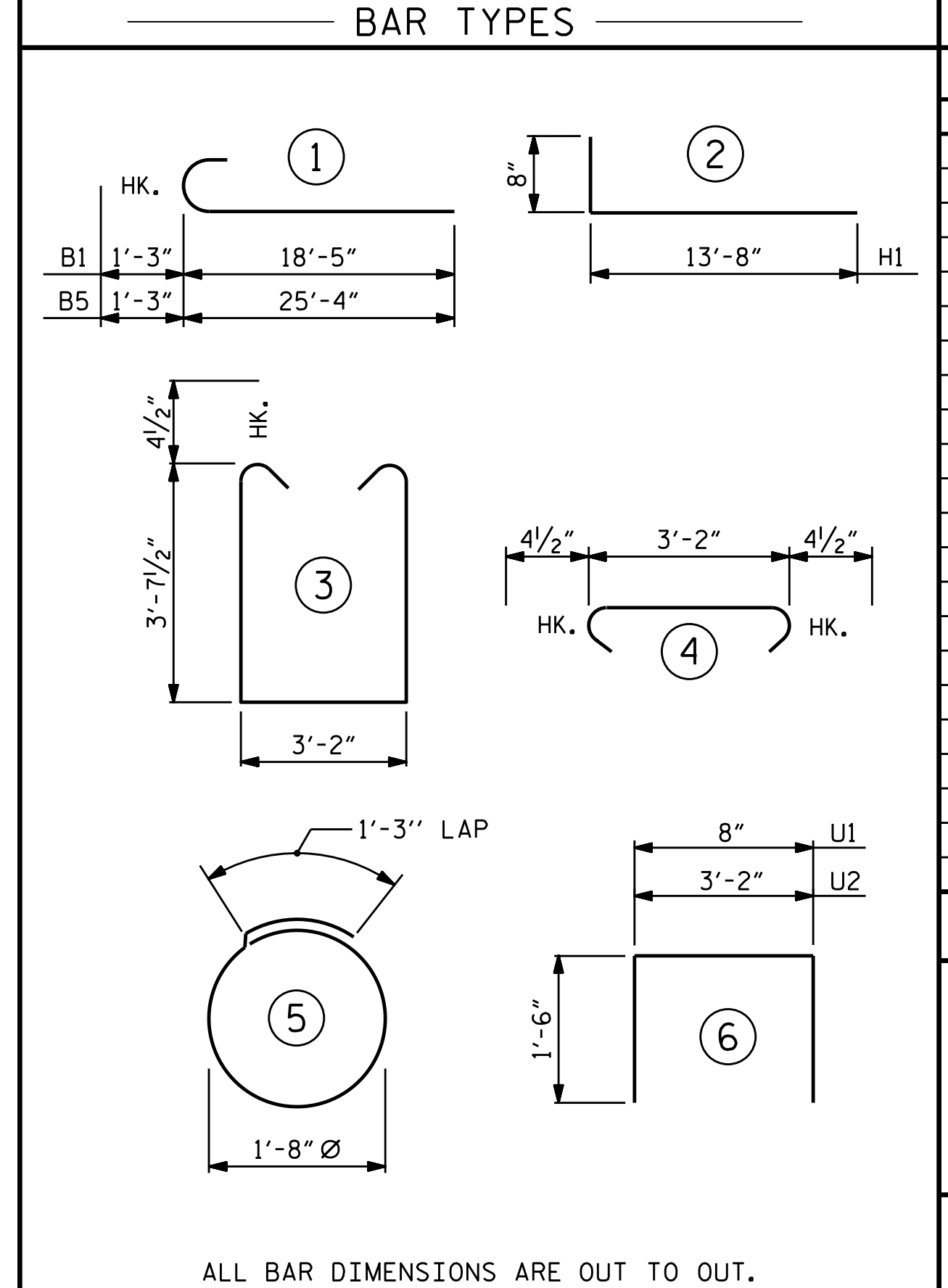


BAGGED STONE AND PIPE SHALL BE PLACED IMMEDIATELY AFTER COMPLETION OF END BENT EXCAVATION. PIPE MAY BE EITHER CONCRETE, CORRUGATED STEEL, CORRUGATED ALUMINUM ALLOY, OR CORRUGATED PLASTIC. PERFORATED PIPE WILL NOT BE ALLOWED.

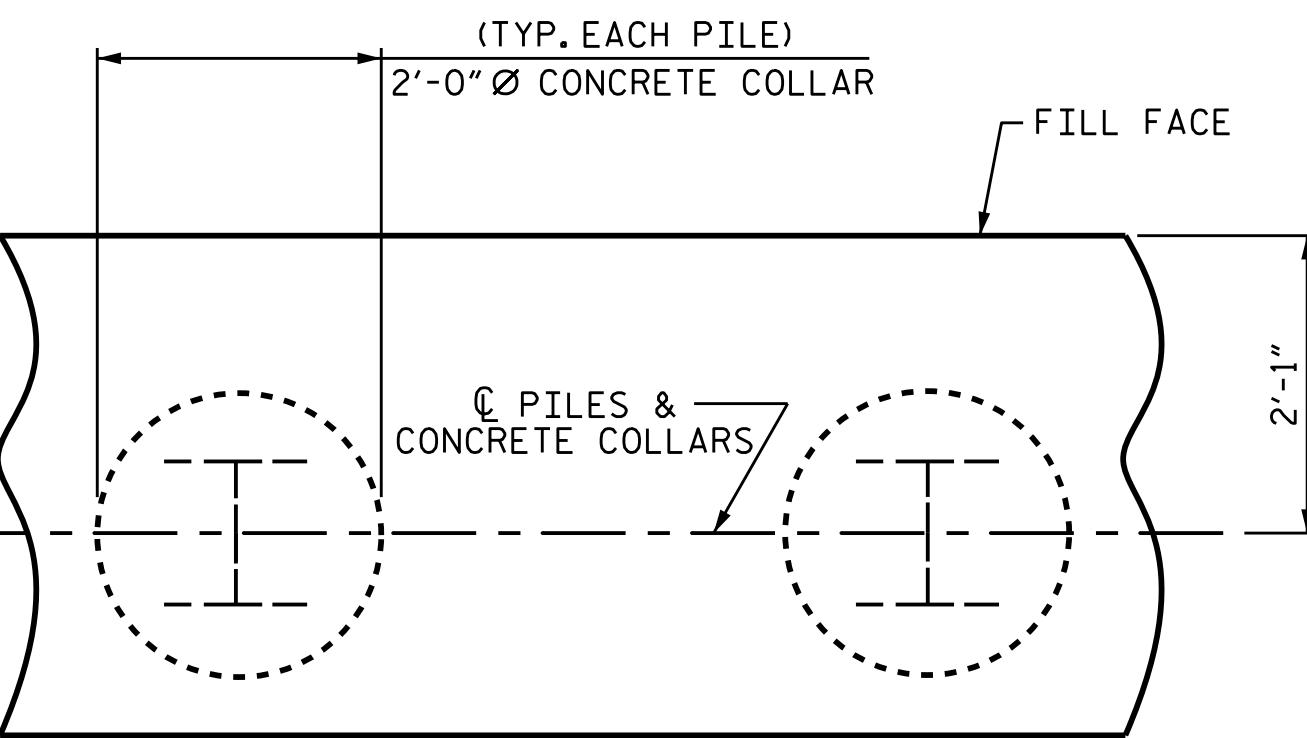
BAGGED STONE SHALL REMAIN IN PLACE UNTIL THE ENGINEER DIRECTS THAT IT BE REMOVED. THE CONTRACTOR SHALL REMOVE AND DISPOSE OF SILT ACCUMULATIONS AT BAGGED STONE WHEN SO DIRECTED BY THE ENGINEER. BAGS SHALL BE REMOVED AND REPLACED WHENEVER THE ENGINEER DETERMINES THAT THEY HAVE DETERIORATED AND LOST THEIR EFFECTIVENESS.

NO SEPARATE PAYMENT WILL BE MADE FOR THIS WORK AND THE ENTIRE COST OF THIS WORK SHALL BE INCLUDED IN THE UNIT CONTRACT PRICE BID FOR THE SEVERAL PAY ITEMS.

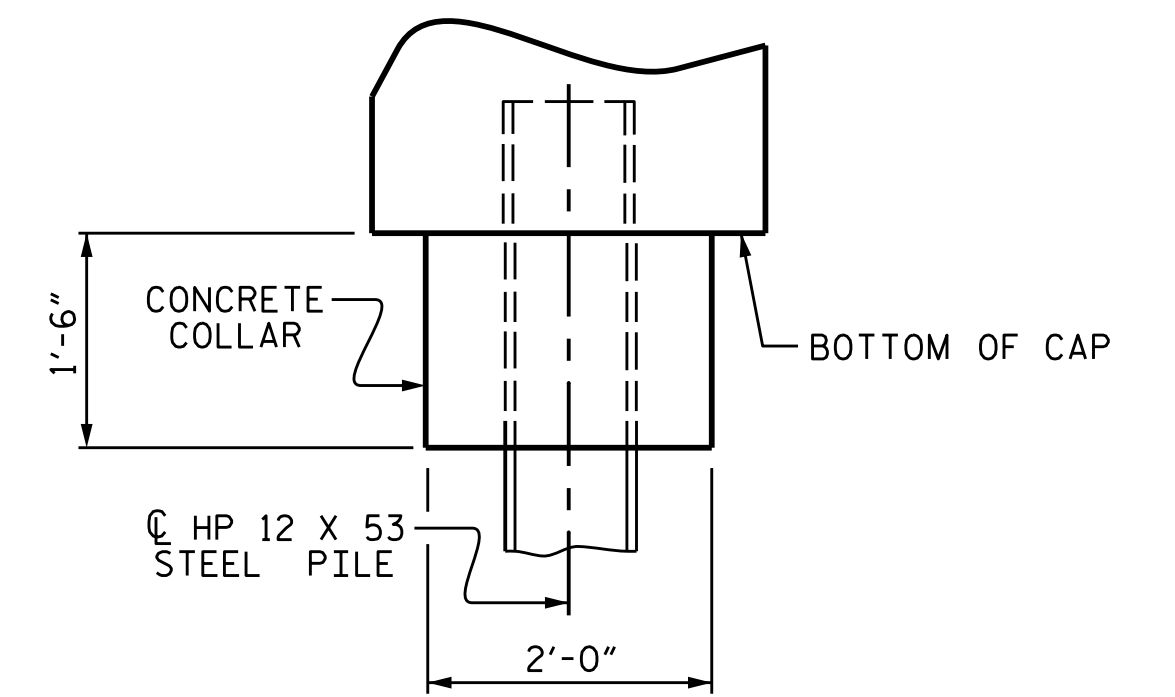
TEMPORARY DRAINAGE AT END BENT



ALL BAR DIMENSIONS ARE OUT TO OUT.

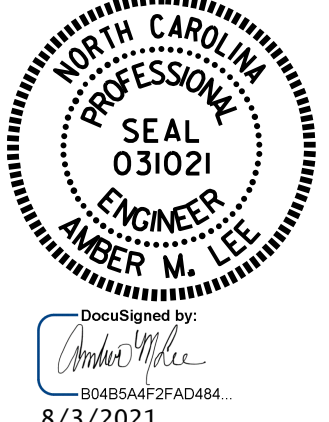


PLAN



ELEVATION

CORROSION PROTECTION FOR STEEL PILES DETAIL



BILL OF MATERIAL													
STAGE I						STAGE II							
BAR	NO.	SIZE	TYPE	LENGTH	WEIGHT	BAR	NO.	SIZE	TYPE	LENGTH	WEIGHT		
B5	8	#9	1	26'-7"	723	B1	8	#9	1	19'-8"	535		
B6	10	#4	STR	27'-0"	180	B2	10	#4	STR	19'-6"	130		
B7	6	#4	STR	3'-2"	13	B3	5	#4	STR	3'-2"	11		
B8	4	#4	STR	7'-5"	20	B4	4	#4	STR	3'-4"	9		
B9	4	#4	STR	16'-5"	44								
						H1	44	#6	2	14'-4"	947		
						K1	12	#4	STR	19'-6"	156		
						K2	28	#4	STR	3'-6"	65		
						S1	19	#4	3	11'-2"	142		
						S2	19	#4	4	3'-11"	50		
						S3	16	#4	5	6'-6"	69		
						U1	16	#4	6	3'-8"	39		
						U2	3	#4	STR	6'-2"	12		
						V2	42	#5	STR	9'-1"	398		
						V4	36	#5	STR	11'-4"	426		
REINFORCING STEEL					3515 LBS.	REINFORCING STEEL					2857 LBS.		
CLASS A CONCRETE BREAKDOWN						CLASS A CONCRETE BREAKDOWN							
POUR #1 CAP, LOWER PART OF WING & COLLARS						17.4 C.Y.	POUR #1 CAP, LOWER PART OF WING & COLLARS						13.1 C.Y.
POUR #2 BACKWALL & UPPER PART OF WING						8.6 C.Y.	POUR #2 BACKWALL & UPPER PART OF WING						7.6 C.Y.
TOTAL CLASS A CONCRETE						26.0 C.Y.	TOTAL CLASS A CONCRETE						20.7 C.Y.
HP 12 X 53 STEEL PILES						No. 5 LIN FT. 75	HP 12 X 53 STEEL PILES						No. 4 LIN FT. 60
STEEL PILE POINTS						NO. 5	STEEL PILE POINTS						NO. 4
PILE DRIVING EQUIPMENT SETUP FOR HP 12 X 53 STEEL PILES						5 EA.	PILE DRIVING EQUIPMENT SETUP FOR HP 12 X 53 STEEL PILES						4 EA.

DRAWN BY : A. SORSENGINH DATE : 06/2020  
 CHECKED BY : K. PUROHIT DATE : 06/2020  
 DESIGN ENGINEER OF RECORD : J. TILLMAN DATE : 12/2019

DOCUMENT NOT CONSIDERED FINAL UNLESS ALL SIGNATURES COMPLETED

REVISIONS						SHEET NO.
NO.	BY:	DATE:	NO.	BY:	DATE:	TOTAL SHEETS
1			3			S-37
2			4			40