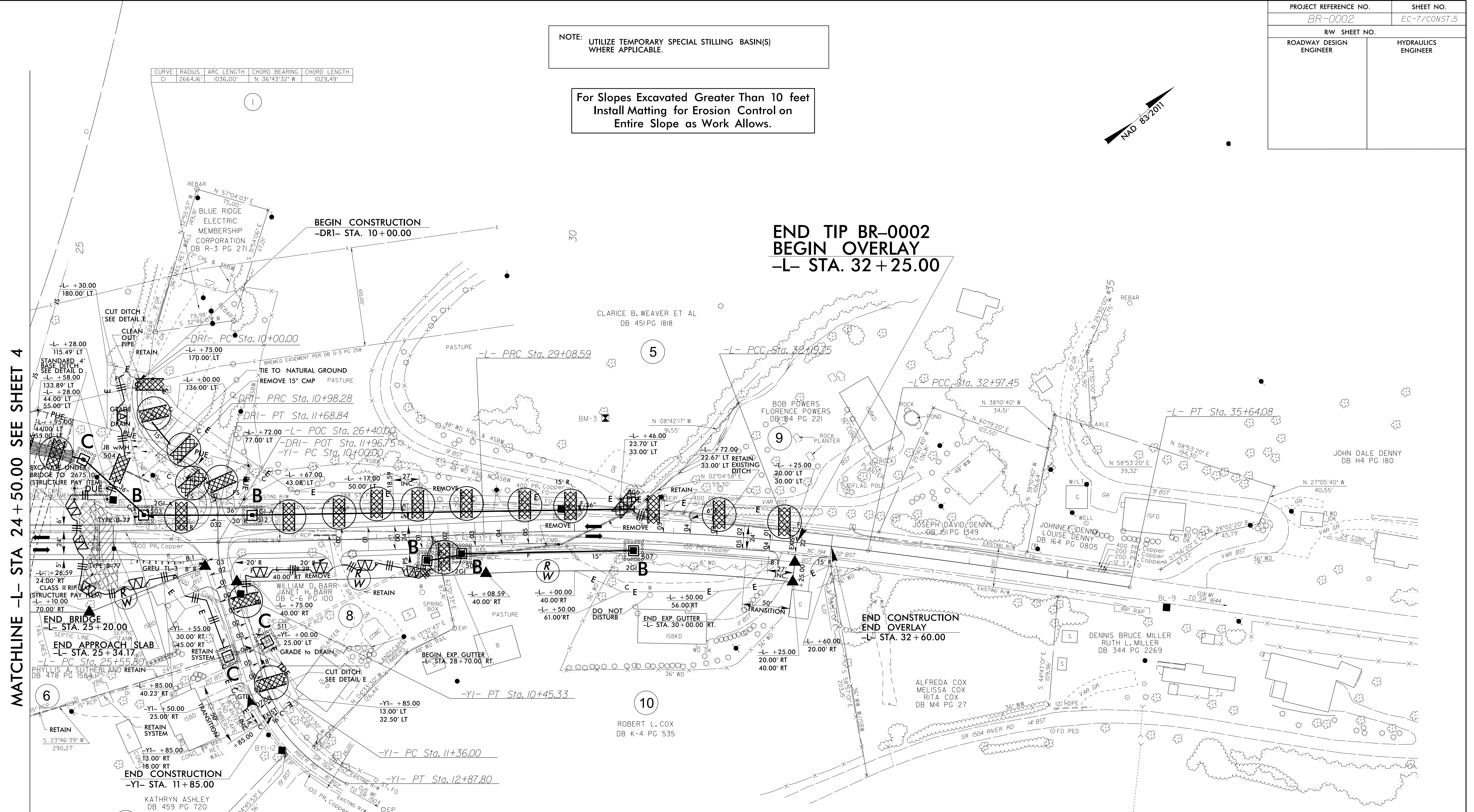


PROJECT REFERENCE NO. BR-0002		SHEET NO. EC-7/CONST.5	
RW SHEET NO.		HYDRAULICS ENGINEER	
ROADWAY DESIGN ENGINEER		HYDRAULICS ENGINEER	

NOTE: UTILIZE TEMPORARY SPECIAL STILLING BASIN(S) WHERE APPLICABLE.

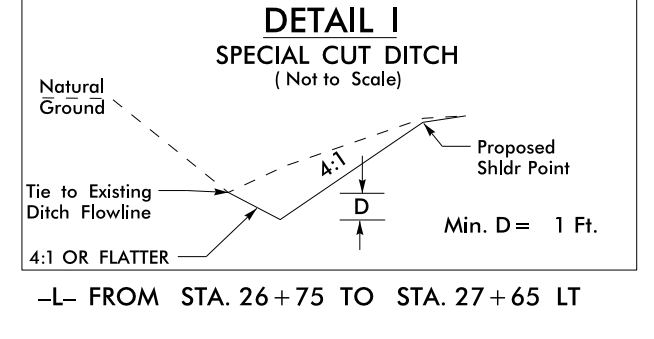
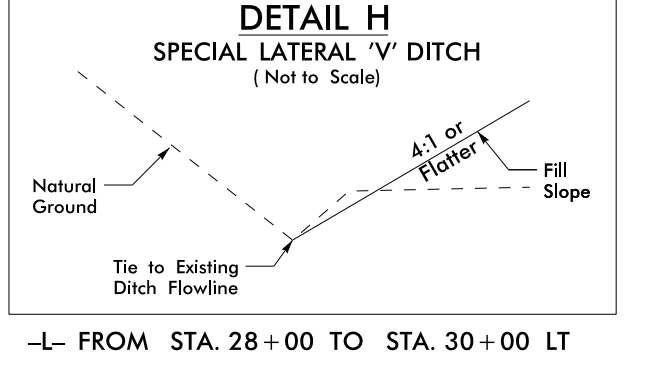
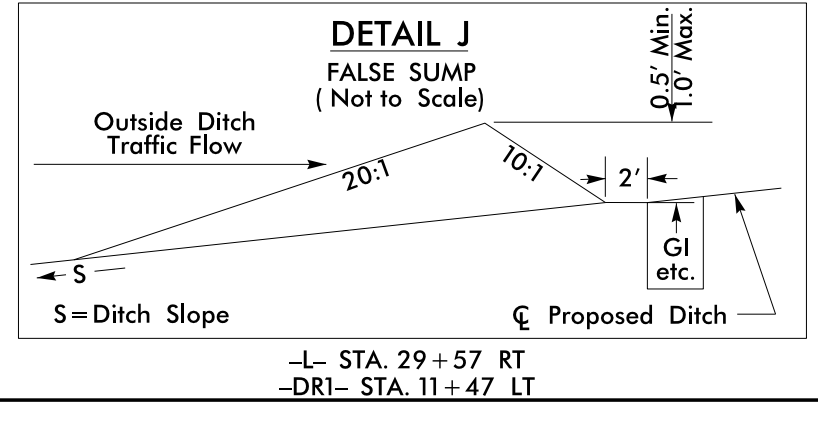
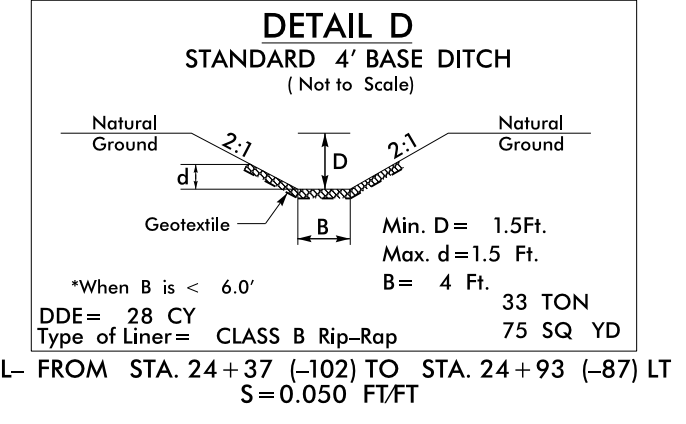
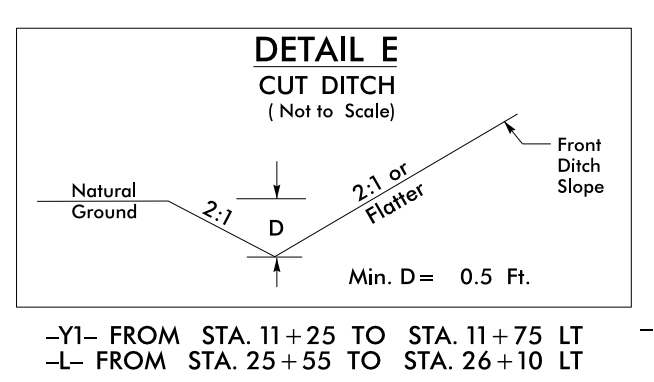
For Slopes Excavated Greater Than 10 feet
Install Matting for Erosion Control on
Entire Slope as Work Allows.



MATCHLINE -L- STA 24+50.00 SEE SHEET 4

**END TIP BR-0002
BEGIN OVERLAY
-L- STA. 32+25.00**

END BRIDGE
-L- STA. 25+20.00
END APPROACH SLAB
-L- STA. 25+34.17
END CONSTRUCTION
-YI- STA. 11+85.00



Install Excelsior Natural Fiber Matting on exposed soils in delineated area.

8/17/99

C:\PROJECTS\BR-0002\CONSTR\BR-0002-EC-7.DWG