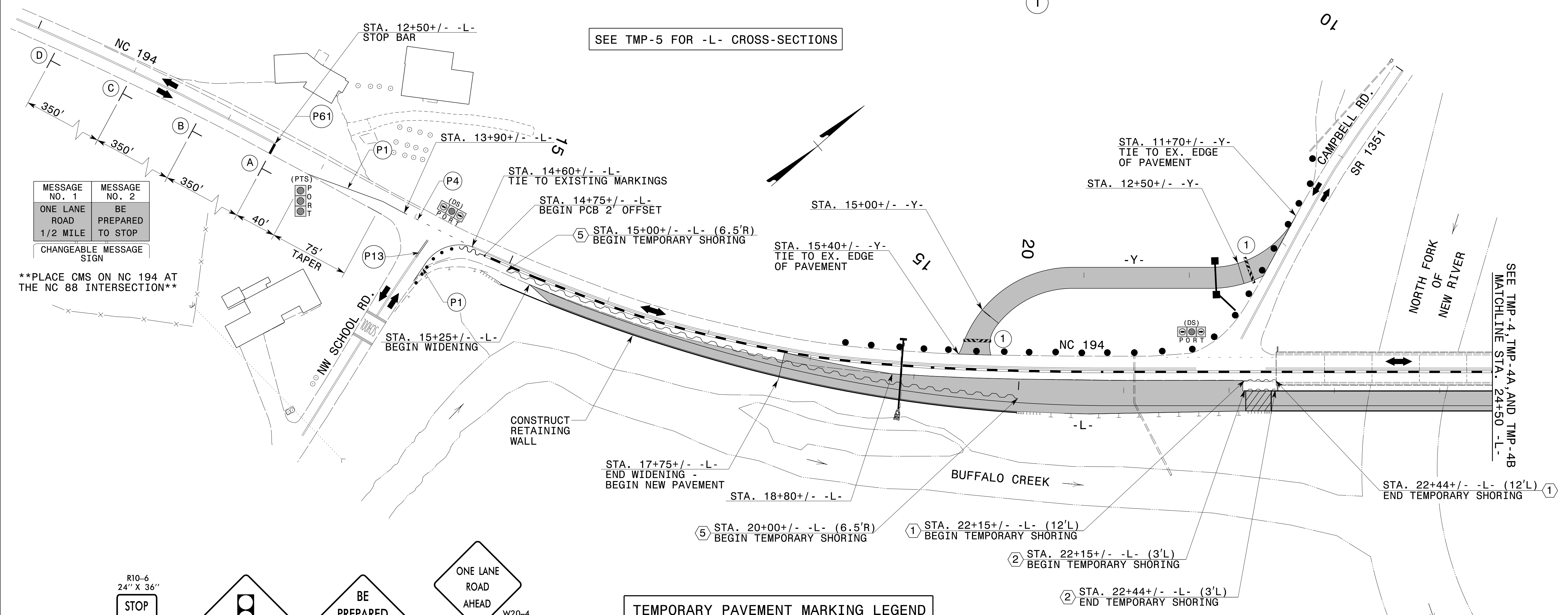
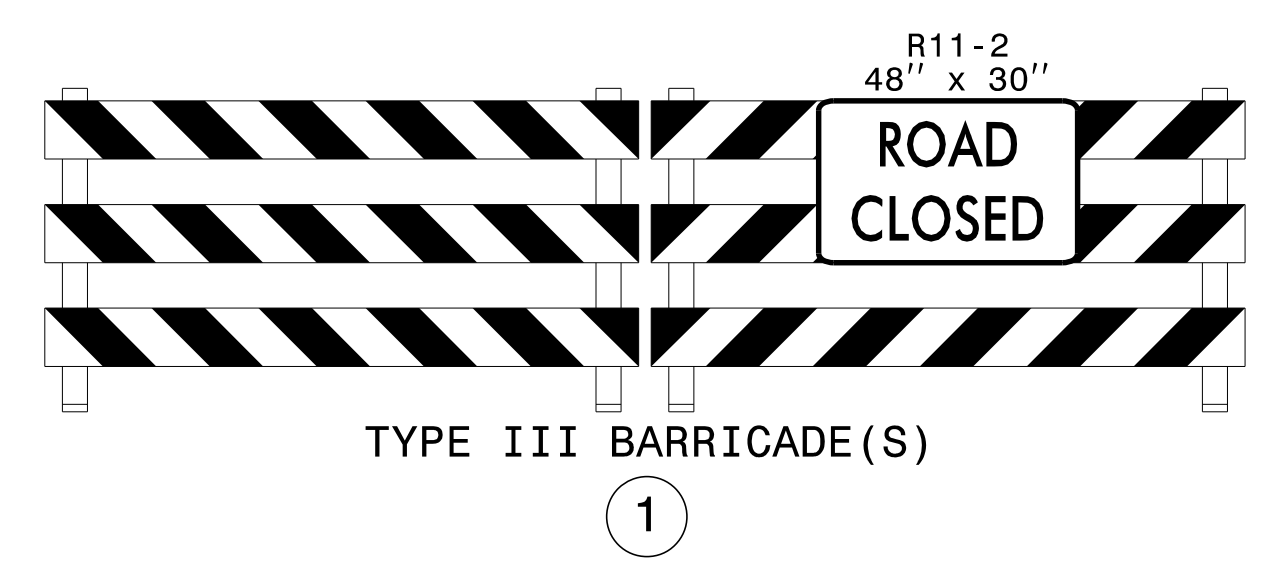
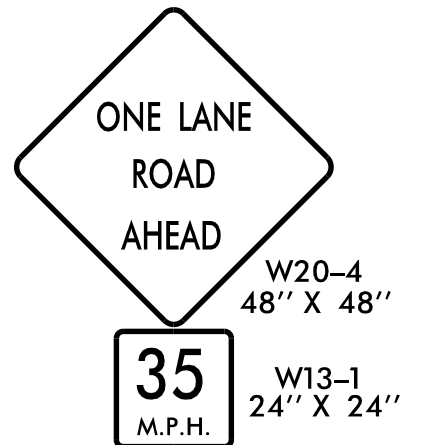
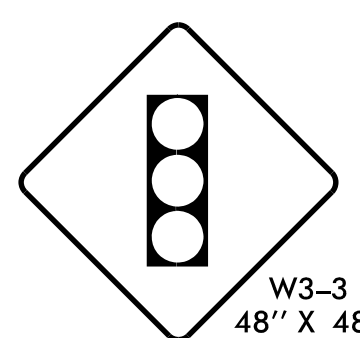
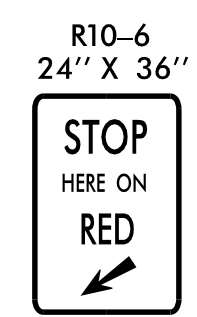


Shoring I.D. No.	Estimated Average Height (ft.)	Quantity (sq. ft.)
①	4.0 FT.	116 SQ. FT.
②	4.0 FT.	116 SQ. FT.
⑤	13.5 FT.	6,750 SQ. FT.



REFER TO RSD NOS. 1205.01, 1205.02, AND 1251.01 FOR PLACEMENT OF TEMPORARY PAVEMENT MARKINGS AND MARKERS UNLESS NOTED OTHERWISE.

MESSAGE NO. 1	MESSAGE NO. 2
ONE LANE ROAD 1/2 MILE	BE PREPARED TO STOP
CHANGEABLE MESSAGE SIGN	

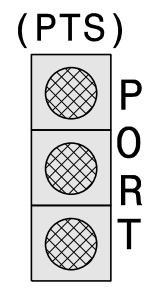
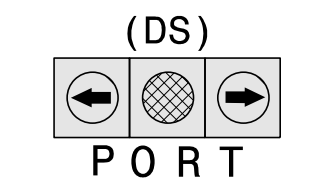


①

②

③

④



NW SCHOOL RD.
CAMPBELL RD.

STA. 12+90+/- -L-

APPROVED: *Karen Davis*
DATE: 8/16/2021

DOCUMENT NOT CONSIDERED FINAL UNLESS ALL SIGNATURES COMPLETED

PHASE I DETAILS

4/24/2020 05:00 Division\BR0002\TrafficControl\TCP\BR0002_TC_PHL_TMP03.dgn User:KEDAS