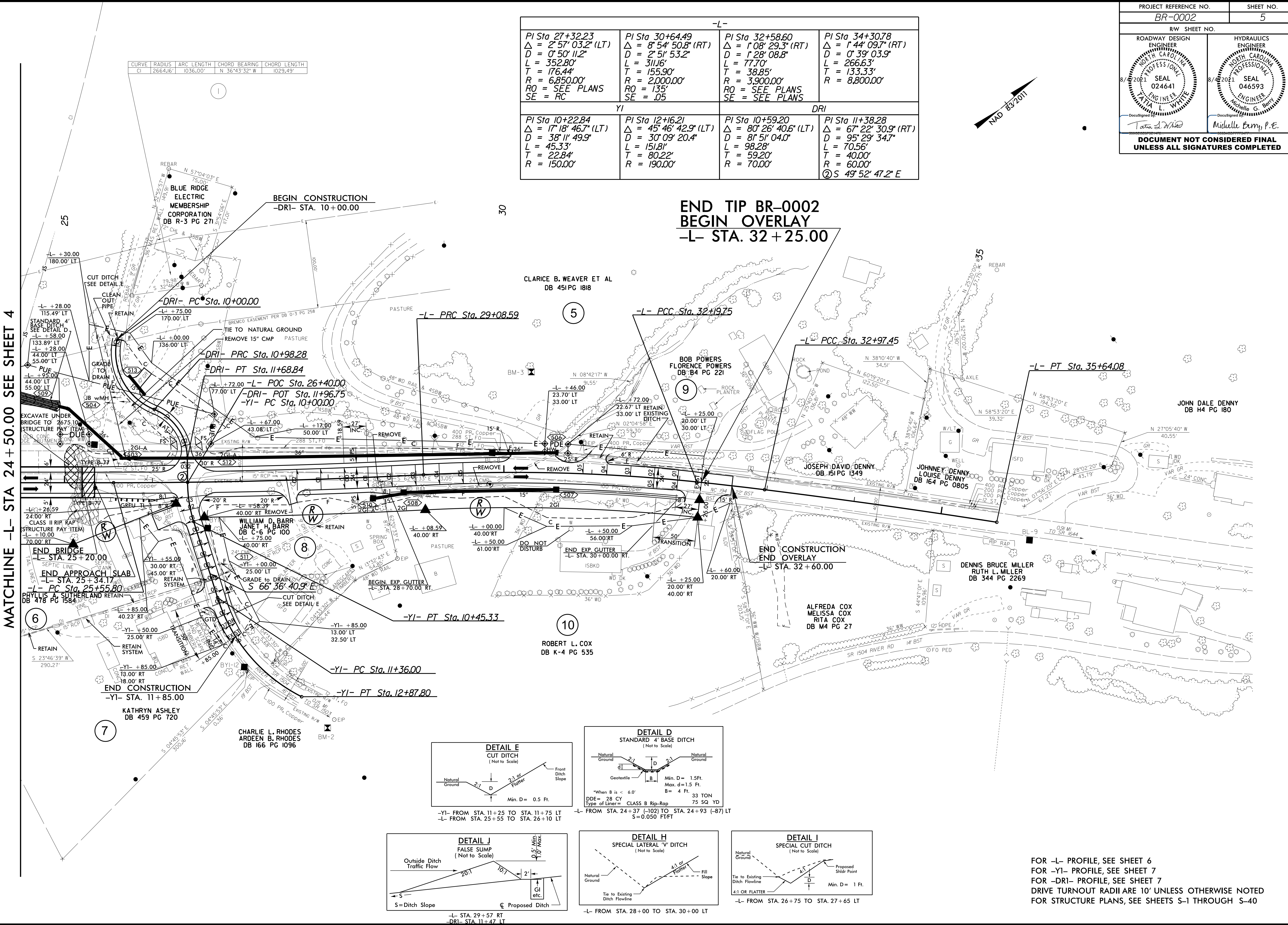
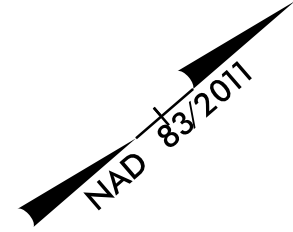
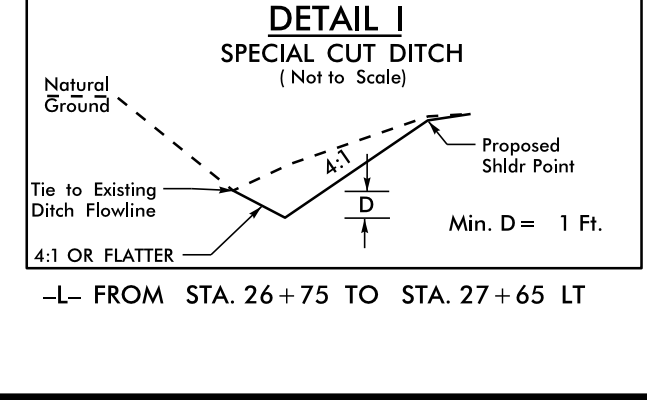
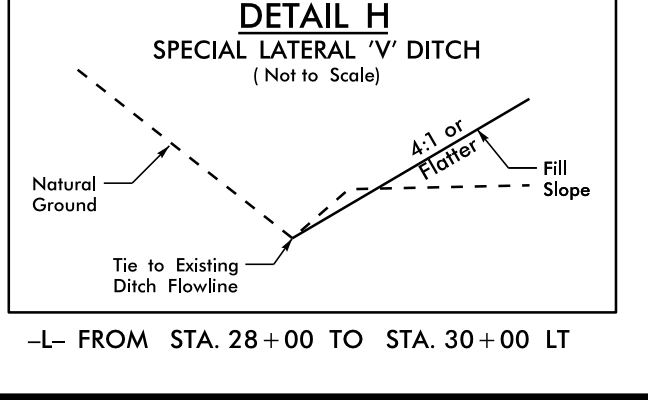
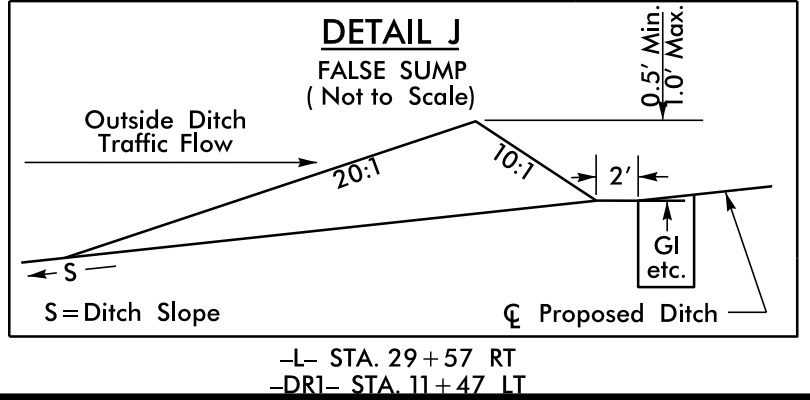
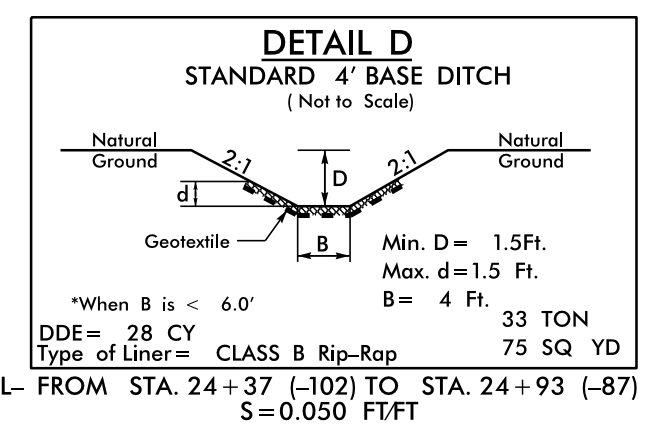
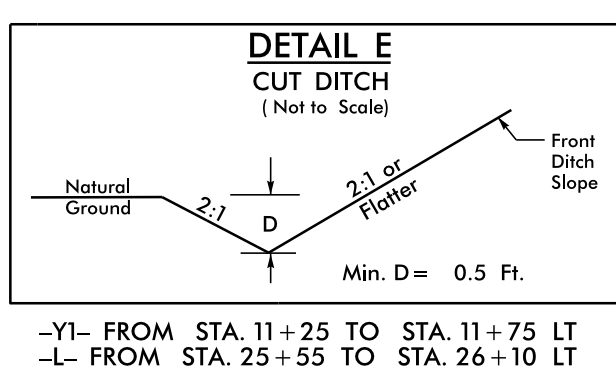


| -L- | | | |
|---|---|---|--|
| PI Sta 27+32.23 $\Delta = 2^{\circ}57'03.2''$ (LT) $D = 0^{\circ}50'11.2''$ $L = 352.80'$ $T = 176.44'$ $R = 6,850.00'$ $RO = \text{SEE PLANS}$ $SE = RC$ | PI Sta 30+64.49 $\Delta = 8^{\circ}54'50.8''$ (RT) $D = 2^{\circ}51'53.2''$ $L = 311.6'$ $T = 155.90'$ $R = 2,000.00'$ $RO = 135'$ $SE = .05$ | PI Sta 32+58.60 $\Delta = 1^{\circ}08'29.3''$ (RT) $D = 1^{\circ}28'08.8''$ $L = 77.70'$ $T = 38.85'$ $R = 3,900.00'$ $RO = \text{SEE PLANS}$ $SE = \text{SEE PLANS}$ | PI Sta 34+30.78 $\Delta = 1^{\circ}44'09.7''$ (RT) $D = 0^{\circ}39'03.9''$ $L = 266.63'$ $T = 133.33'$ $R = 8,800.00'$ |
| YI | | DRI | |
| PI Sta 10+22.84 $\Delta = 17^{\circ}18'46.7''$ (LT) $D = 38^{\circ}11'49.9''$ $L = 45.33'$ $T = 22.84'$ $R = 150.00'$ | PI Sta 12+16.21 $\Delta = 45^{\circ}46'42.9''$ (LT) $D = 30^{\circ}09'20.4''$ $L = 151.81'$ $T = 80.22'$ $R = 190.00'$ | PI Sta 10+59.20 $\Delta = 80^{\circ}26'40.6''$ (LT) $D = 81^{\circ}51'04.0''$ $L = 98.28'$ $T = 59.20'$ $R = 70.00'$ | PI Sta 11+38.28 $\Delta = 67^{\circ}22'30.9''$ (RT) $D = 95^{\circ}29'34.7''$ $L = 70.56'$ $T = 40.00'$ $R = 60.00'$ ② S 49°52'47.2" E |



MATCHLINE -L- STA 24 + 50.00 SEE SHEET 4



FOR -L- PROFILE, SEE SHEET 6
FOR -YI- PROFILE, SEE SHEET 7
FOR -DRI- PROFILE, SEE SHEET 7
DRIVE TURNOUT RADII ARE 10' UNLESS OTHERWISE NOTED
FOR STRUCTURE PLANS, SEE SHEETS S-1 THROUGH S-40

8/17/99

REVISIONS

04-AUG-2021 06:55 BR0002_Rdwy_psh_5.dgn
3:43:50 PM 8/17/2021