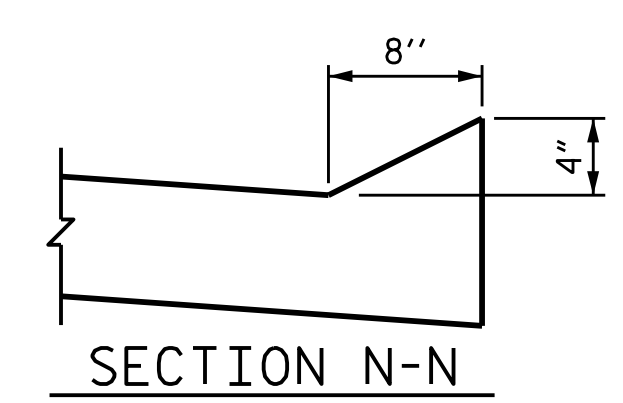
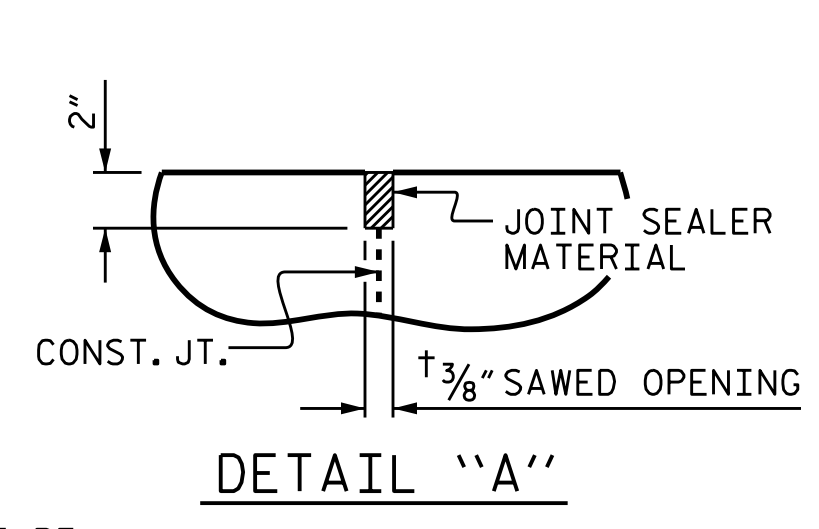
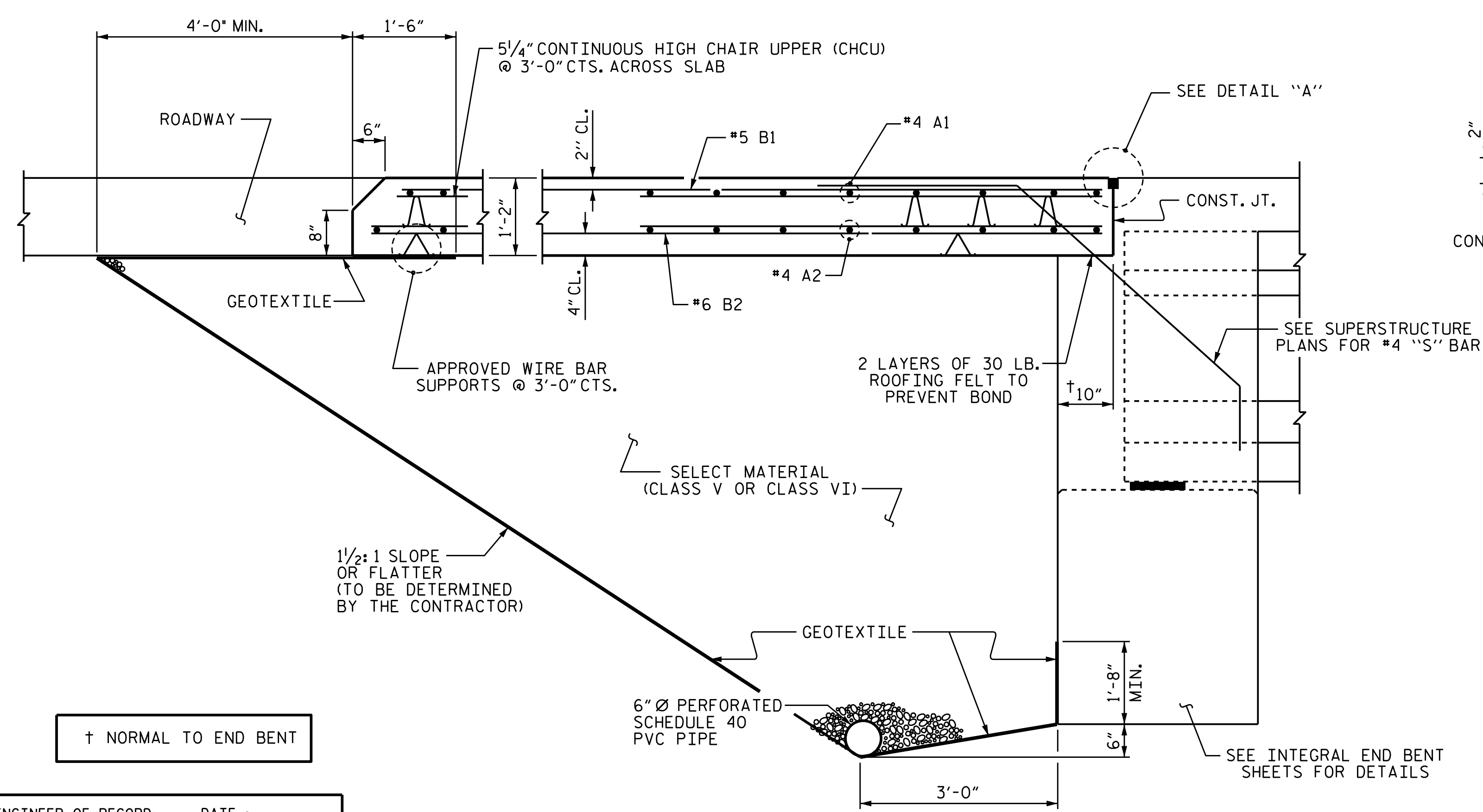


DIMENSIONS SHOWN ARE TYPICAL FOR BOTH APPROACH SLABS



SECTION THRU SLAB AT END BENT 2  
(TYPE I - STANDARD APPROACH FILL)

NOTES

APPROACH SLAB SHALL NOT BE CONSTRUCTED PRIOR TO COMPLETION OF THE BRIDGE DECK.

FOR BRIDGE APPROACH FILL INCLUDING GEOTEXTILE, 6" Ø DRAINAGE PIPE, AND SELECT MATERIAL, SEE ROADWAY PLANS.

GEOTEXTILE SHALL BE TYPE 1 IN ACCORDANCE WITH THE STANDARD SPECIFICATIONS SECTION 1056.

SELECT MATERIAL BACKFILL (CLASS V OR CLASS VI) SHALL BE IN ACCORDANCE WITH STANDARD SPECIFICATIONS SECTION 1016.

SELECT MATERIAL BACKFILL IS TO BE CONTINUOUS ALONG FILL FACE OF BACKWALL FROM OUTSIDE EDGE TO OUTSIDE EDGE OF APPROACH SLAB.

FOR THE 6" Ø DRAINAGE PIPE OUTLET(S), SEE ROADWAY STANDARD DRAWINGS.

AREA BETWEEN THE WINGWALL AND APPROACH SLAB SHALL BE GRADED TO DRAIN THE WATER AWAY FROM THE FILL FACE OF THE BRIDGE AND SHALL BE PAVED. SEE ROADWAY PLANS.

THE JOINT OPENING AT THE APPROACH SLAB/DECK INTERFACE SHALL BE SAWED NO MORE THAN 12 HOURS AFTER THE APPROACH SLAB IS CAST. THE JOINT SHALL BE CLEANED OF ALL DEBRIS BEFORE THE SEALANT IS APPLIED. THE JOINT SEALER MATERIAL SHALL CONFORM TO THE REQUIREMENTS OF SECTION 1028-3 OF THE STANDARD SPECIFICATIONS.

"TYPE A - ALTERNATE APPROACH FILL" SHALL BE CONSTRUCTED AT END BENT 1. "TYPE I - STANDARD APPROACH FILL" NOT ALLOWED AT END BENT 1. SEE SHEET 2 OF 2 FOR DETAILS AND NOTES.

AT THE CONTRACTORS OPTION, "TYPE A - ALTERNATE APPROACH FILL" IN LIEU OF "TYPE I - STANDARD APPROACH FILL" MAY BE CONSTRUCTED AT NO ADDITIONAL COST TO THE DEPARTMENT AT BENT 2 ONLY. SEE SHEET 2 OF 2 FOR DETAILS AND NOTES.

BILL OF MATERIAL

FOR ONE APPROACH SLAB (2 REQ'D)

BAR	NO.	SIZE	TYPE	LENGTH	WEIGHT
* A1	26	#4	STR	33'-0"	573
A2	26	#4	STR	33'-0"	573
* B1	67	#5	STR	24'-8"	1724
B2	67	#6	STR	24'-8"	2482
REINFORCING STEEL				LBS.	3055
* EPOXY COATED REINFORCING STEEL				LBS.	2297
CLASS AA CONCRETE				C. Y.	36.0

SPLICE LENGTHS

BAR SIZE	EPOXY COATED	UNCOATED
#4	2'-0"	1'-9"
#5	2'-6"	2'-2"
#6	3'-10"	2'-7"

KCI JOB NO: 251801945.13

DESIGN ENGINEER OF RECORD: DATE: 7/1/2021  
 DRAWN BY: A. SAMBOY DATE: 09/30/20  
 CHECKED BY: R. C. LARSON DATE: 10/12/20

DocuSigned by:  
  
 DB3C8E45B06D49  
 7/1/2021

PROJECT NO. B-5703  
 CUMBERLAND/HARNETT COUNTY  
 STATION: 16+92.70 -L-

SHEET 1 OF 2  
 STATE OF NORTH CAROLINA  
 DEPARTMENT OF TRANSPORTATION  
 RALEIGH  
 STANDARD  
 BRIDGE APPROACH SLAB  
 FOR INTEGRAL ABUTMENT  
 WITH FLEXIBLE PAVEMENT

DOCUMENT NOT CONSIDERED FINAL  
 UNLESS ALL SIGNATURES COMPLETED

NO.	BY:	DATE:	NO.	BY:	DATE:	SHEET NO.
1			3			S-28
2			4			TOTAL SHEETS 29