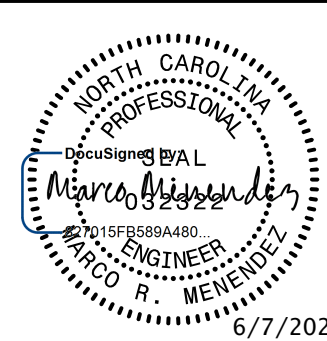
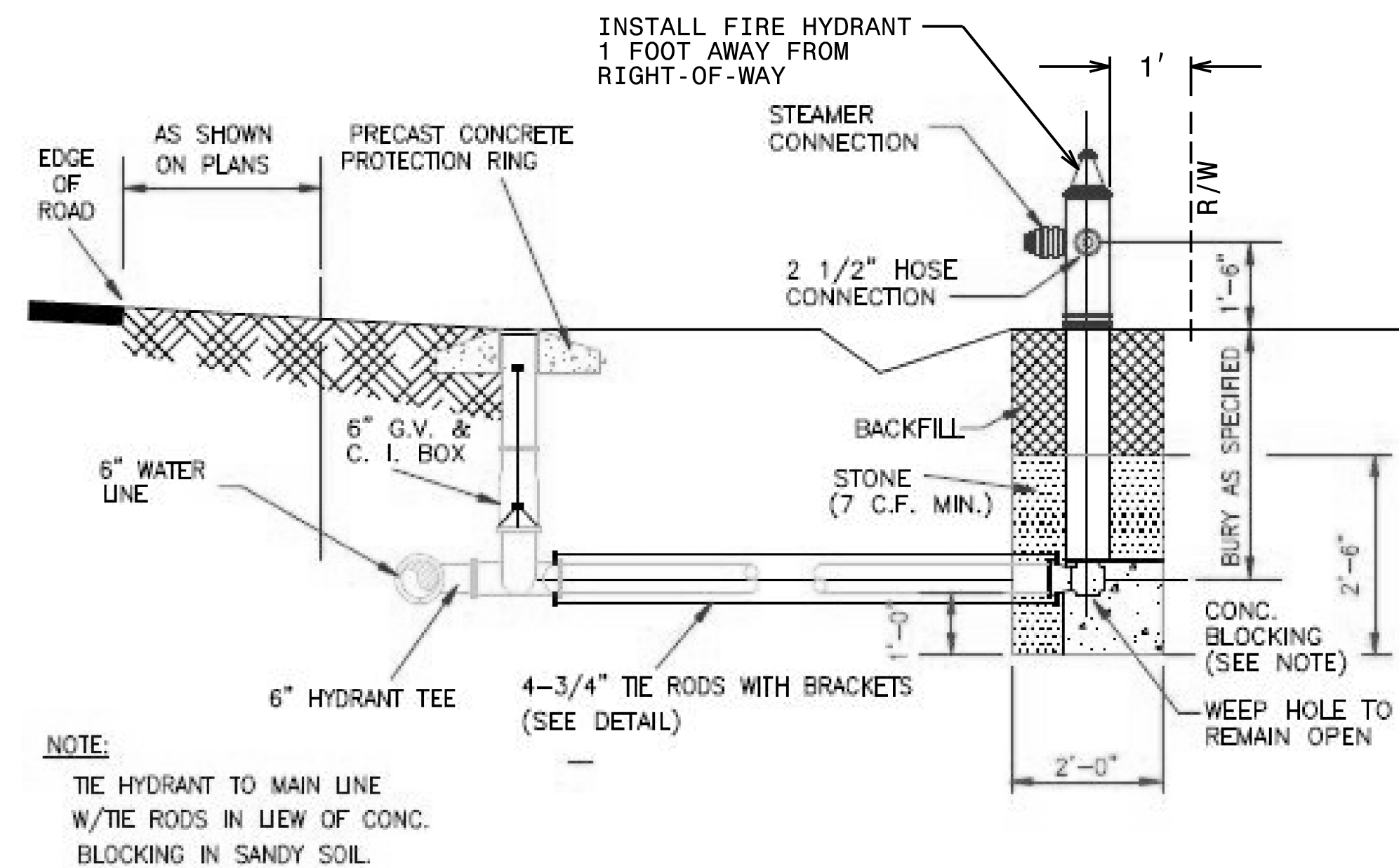


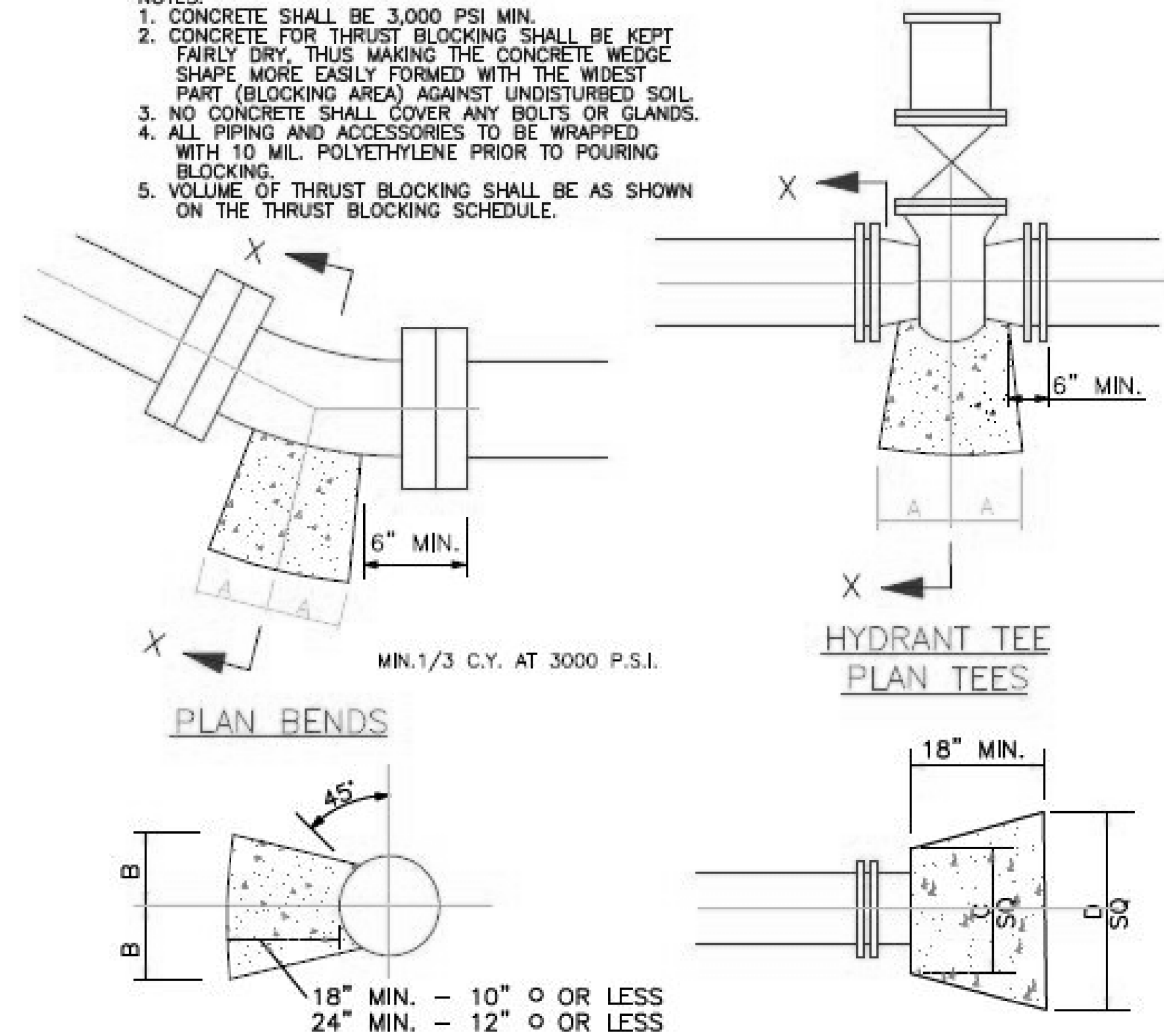
PROJECT REFERENCE NO. B-5703	SHEET NO. UC-3B
DESIGNED BY: DK	
DRAWN BY: AP	
CHECKED BY: MM	
APPROVED BY:	
REVISER:	6/7/2021
NORTH CAROLINA DEPARTMENT OF TRANSPORTATION UTILITIES ENGINEERING SEC. PHONE: (919) 707-6690 FAX: (919) 250-4151	
UTILITIES CONSTRUCTION PLANS ONLY Engineers • Planners • Scientists • Construction Managers 4505 Falls of Neuse Road, Suite 400 Raleigh, NC 27609 Phone (919) 783-9214 • Fax (919) 783-9266 License No. C-764	



NOTE:
TIE HYDRANT TO MAIN LINE W/TIE RODS IN LIEU OF CONC. BLOCKING IN SANDY SOIL.

TYPICAL FIRE HYDRANT INSTALLATION DETAIL W/6
NO SCALE

- NOTES:
1. CONCRETE SHALL BE 3,000 PSI MIN.
 2. CONCRETE FOR THRUST BLOCKING SHALL BE KEPT FAIRLY DRY, THUS MAKING THE CONCRETE WEDGE SHAPE MORE EASILY FORMED WITH THE WIDEST PART (BLOCKING AREA) AGAINST UNDISTURBED SOIL.
 3. NO CONCRETE SHALL COVER ANY BOLTS OR GLANDS.
 4. ALL PIPING AND ACCESSORIES TO BE WRAPPED WITH 10 MIL. POLYETHYLENE PRIOR TO POURING BLOCKING.
 5. VOLUME OF THRUST BLOCKING SHALL BE AS SHOWN ON THE THRUST BLOCKING SCHEDULE.



PIPE SIZE	90° BEND		45° BEND		22 1/2° BEND		11/4° BEND		TEE		PLUG	
	A	B	A	B	A	B	A	B	A	B	C	D
4"	8"	12"	8"	8"	6"	6"	6"	6"	8"	9"	10"	16"
6"	10"	12"	8"	10"	8"	8"	8"	8"	10"	10"	12"	18"
8"	15"	13"	10"	10"	8"	8"	8"	8"	10"	12"	12"	24"
10"	16"	14"	10"	12"	6"	10"	6"	10"	11"	14"	14"	25"
12"	20"	16"	12"	14"	8"	12"	8"	12"	14"	16"	16"	30"
14"	22"	18"	14"	16"	10"	14"	10"	14"	16"	18"	18"	34"
16"	26"	20"	16"	18"	12"	16"	12"	16"	18"	20"	20"	36"

For the dimensions in the table above, it is assumed that the soil bearing is 4,000 lbs. per square foot. If the actual soil bearing value is less than 4,000 lbs. per square foot, the Contractor will be required to provide thrust block calculations for approval and to increase the thrust block dimensions as required based on the calculations.

TYPICAL THRUST BLOCK DETAIL W/7
NO SCALE

UTILITY CONSTRUCTION

DOCUMENT NOT CONSIDERED FINAL
UNLESS ALL SIGNATURES COMPLETED