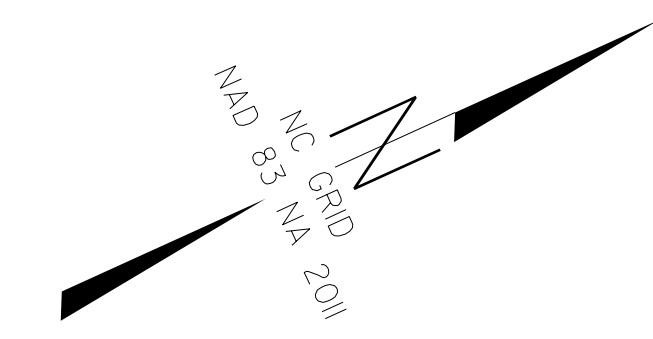


PROJECT REFERENCE NO.	SHEET NO.
B-5703	EC-5/CONST.4
R/W SHEET NO.	4
ROADWAY DESIGN ENGINEER	HYDRAULICS ENGINEER

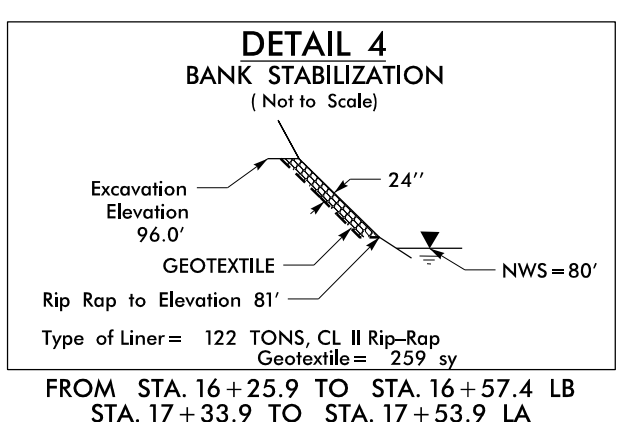
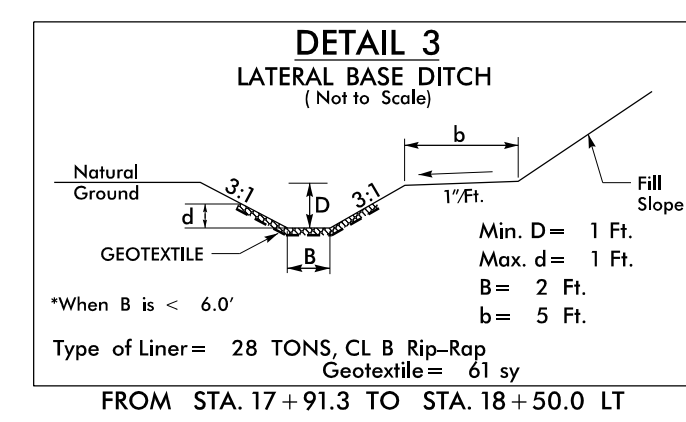
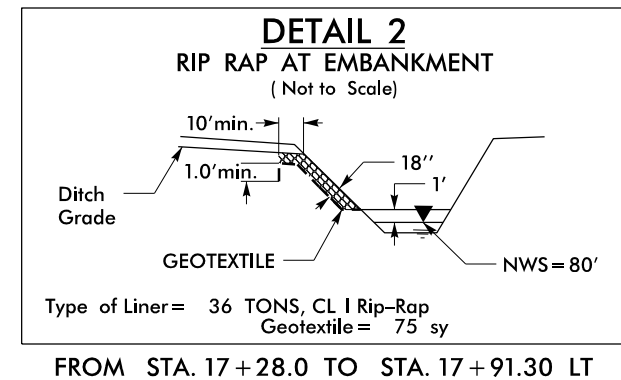
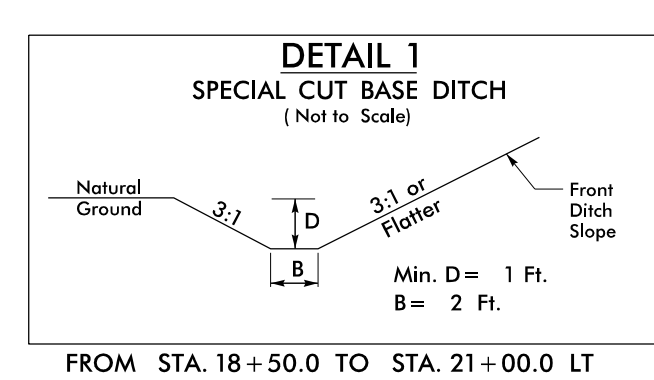
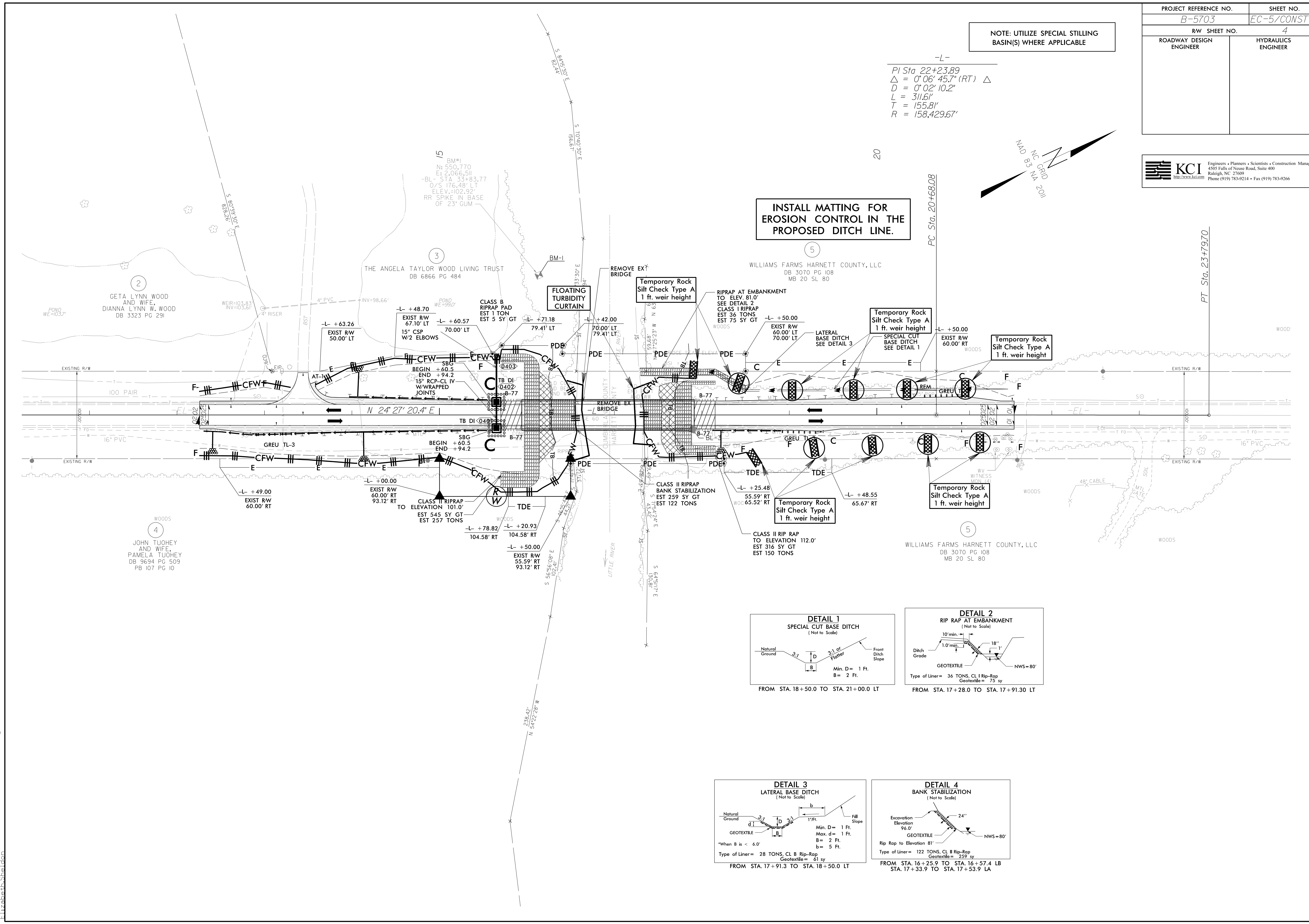
KCI Engineers • Planners • Scientists • Construction Managers
 4505 Falls of Neuse Road, Suite 400
 Raleigh, NC 27609
 Phone (919) 783-9214 • Fax (919) 783-9266

NOTE: UTILIZE SPECIAL STILLING BASIN(S) WHERE APPLICABLE

-L-
 PI Sta 22+23.89
 $\Delta = 0' 06' 45.7" (RT) \Delta$
 $D = 0' 02' 10.2"$
 $L = 311.6'$
 $T = 155.8'$
 $R = 158,429.67'$



INSTALL MATTING FOR EROSION CONTROL IN THE PROPOSED DITCH LINE.



018\251809\429\2018\5703\Roadside\B-5703-reu-f.mal.dgn
 Elizabeth Sheldon