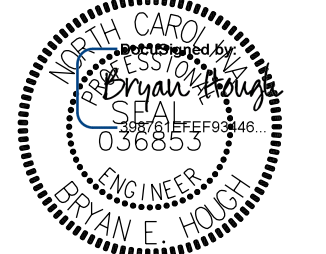


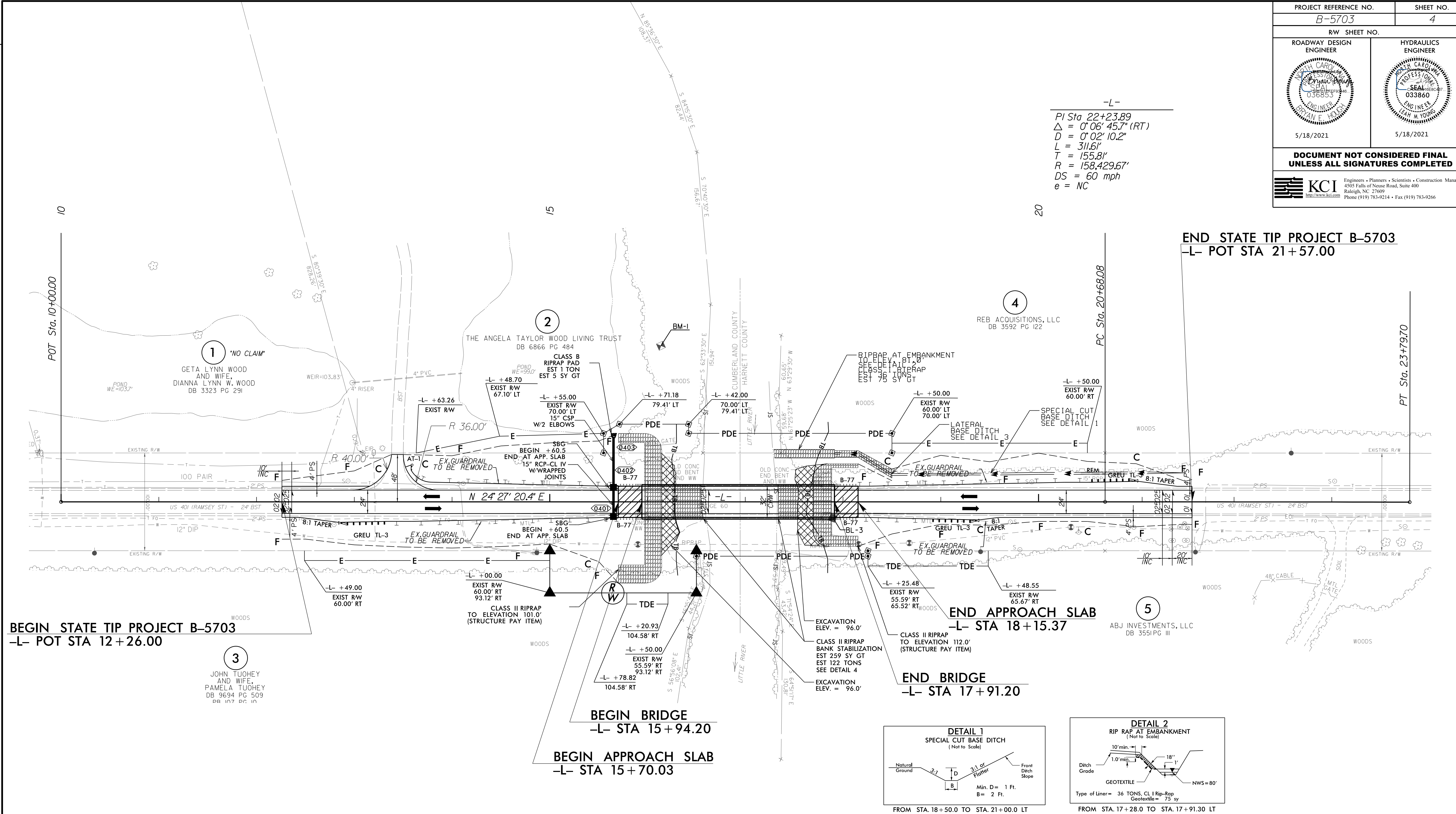


PROJECT REFERENCE NO. <b>B-5703</b>		SHEET NO. <b>4</b>	
RW SHEET NO.			
ROADWAY DESIGN ENGINEER		HYDRAULICS ENGINEER	
 5/18/2021		 5/18/2021	
<b>DOCUMENT NOT CONSIDERED FINAL UNLESS ALL SIGNATURES COMPLETED</b>			
		Engineers • Planners • Scientists • Construction Managers 4505 Falls of Neuse Road, Suite 400 Raleigh, NC 27609 Phone (919) 783-9214 • Fax (919) 783-9266	

-L-

$PI\ Sta\ 22+23.89$   
 $\Delta = 0^{\circ}06'45.7''\ (RT)$   
 $D = 0^{\circ}02'10.2''$   
 $L = 311.61'$   
 $T = 155.81'$   
 $R = 158,429.67'$   
 $DS = 60\ mph$   
 $e = NC$

**END STATE TIP PROJECT B-5703**  
-L- POT STA 21+57.00



**BEGIN STATE TIP PROJECT B-5703**  
-L- POT STA 12+26.00

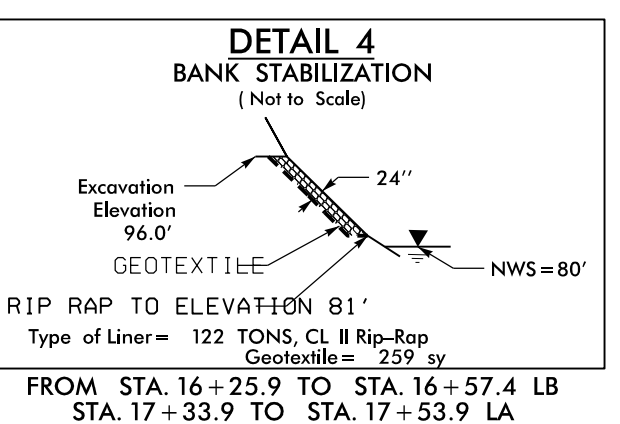
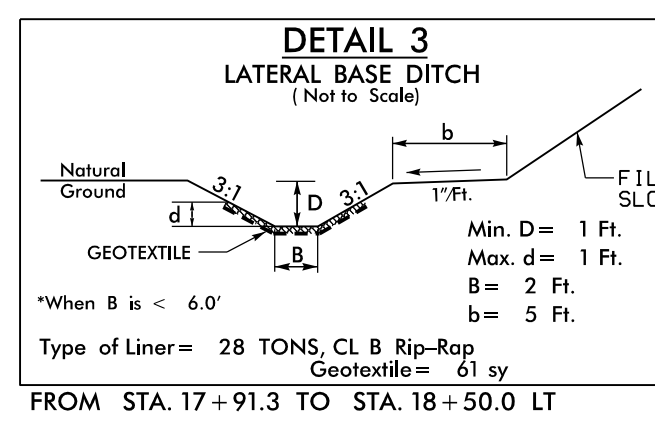
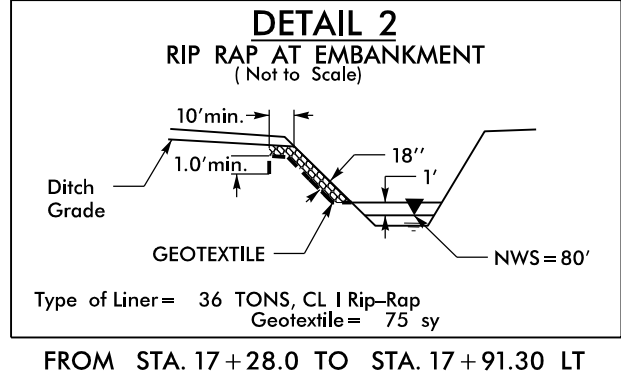
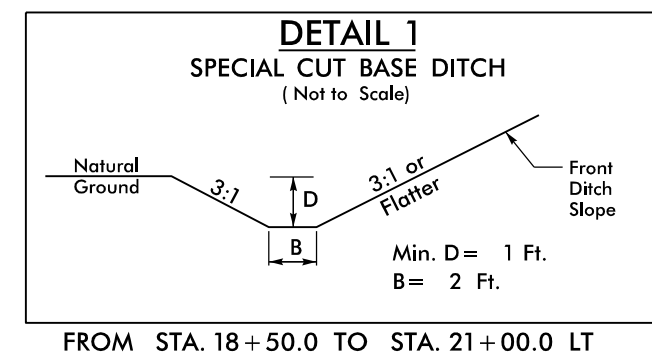
3  
JOHN TUOHEY AND WIFE,  
PAMELA TUOHEY  
DB 9694 PG 509  
PR INT PR IN

**BEGIN BRIDGE**  
-L- STA 15+94.20

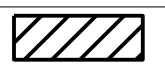

**BEGIN APPROACH SLAB**  
-L- STA 15+70.03

**END APPROACH SLAB**  
-L- STA 18+15.37

**END BRIDGE**  
-L- STA 17+91.20



LEGEND:

	BRIDGE APPROACH SLAB
	EXCAVATION (STR. PAY ITEM)

FOR -L- PROFILE SEE SHEET 5  
FOR BRIDGE SEE SHEETS S-1 TO S-28

REVISIONS

8/17/99  
06-OCT-2020 13:17  
M:\2018\18101945\13 B-5703\Roadway\Proj\B-5703\_Rdy\_psh.dgn  
USER:JANIE