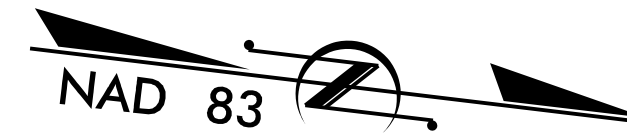


PROJECT REFERENCE NO.	SHEET NO.
R-5020B	UC-10
DESIGNED BY: DK	
DRAWN BY: AP	
CHECKED BY: MM	
APPROVED BY:	
REVISED:	
NORTH CAROLINA DEPARTMENT OF TRANSPORTATION UTILITIES ENGINEERING SEC. PHONE: (919) 707-6690 FAX: (919) 250-4151	
Engineers • Planners • Scientists • Construction Managers 4509 Falls of Neuse Road, Suite 400 Raleigh, NC 27609 Phone (919) 783-9214 • Fax (919) 783-9266 License No. C-764	

WATER LINE



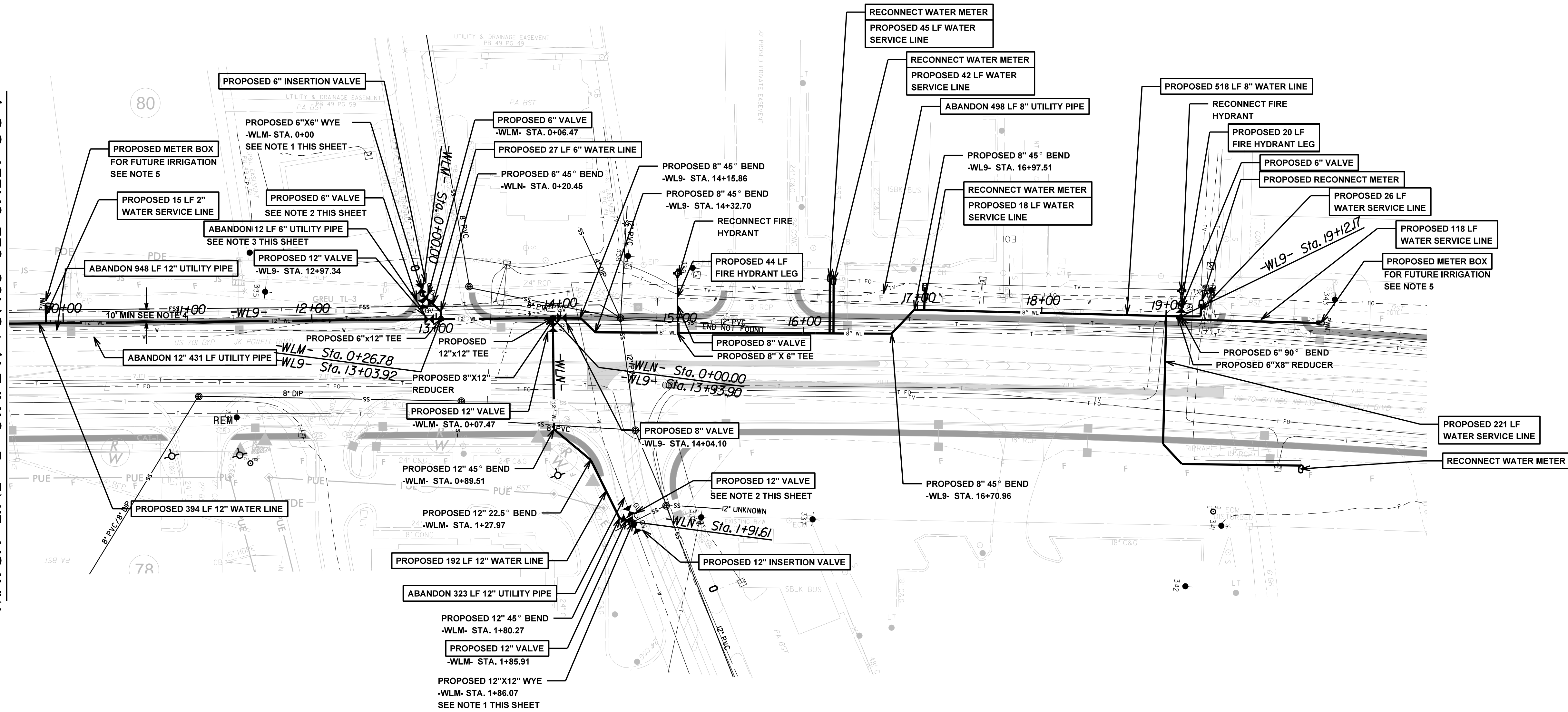
NOTES:

1. SEE SHEET UC-3A FOR CONNECTION TO EXISTING AC WATER LINE DETAIL.
2. FOLLOWING CONSTRUCTION OF THE PROPOSED WATER LINE, ABANDON VALVE IN PLACE.
3. EXISTING PIPE TO BE ABANDONED SHALL BE REMOVED AS NECESSARY BY CONTRACTOR FOR THE PROPOSED PIPE INSTALLATION.
4. CONTRACTOR SHALL ENSURE THAT THE PROPOSED WATER MAIN IS INSTALLED AT LEAST 10 FEET LATERALLY FROM PROPOSED OR EXISTING (NOT TO BE ABANDONED) SANITARY FORCE MAIN PIPING.
5. PROPOSED WATER METER BOX FOR FUTURE METER BY OTHERS.

UTILITY CONSTRUCTION

DOCUMENT NOT CONSIDERED FINAL
UNLESS ALL SIGNATURES COMPLETED

MATCH LINE -L- STA. 249 + 57.03 SEE SHEET UC-9



PROFILE REFERENCE TABLE	
WATERLINE	PROFILE SHEET
WLN	UC-18
WLM	UC-23
WLN	UC-23

3,841 LB DUCTILE IRON
WATER PIPE FITTING

