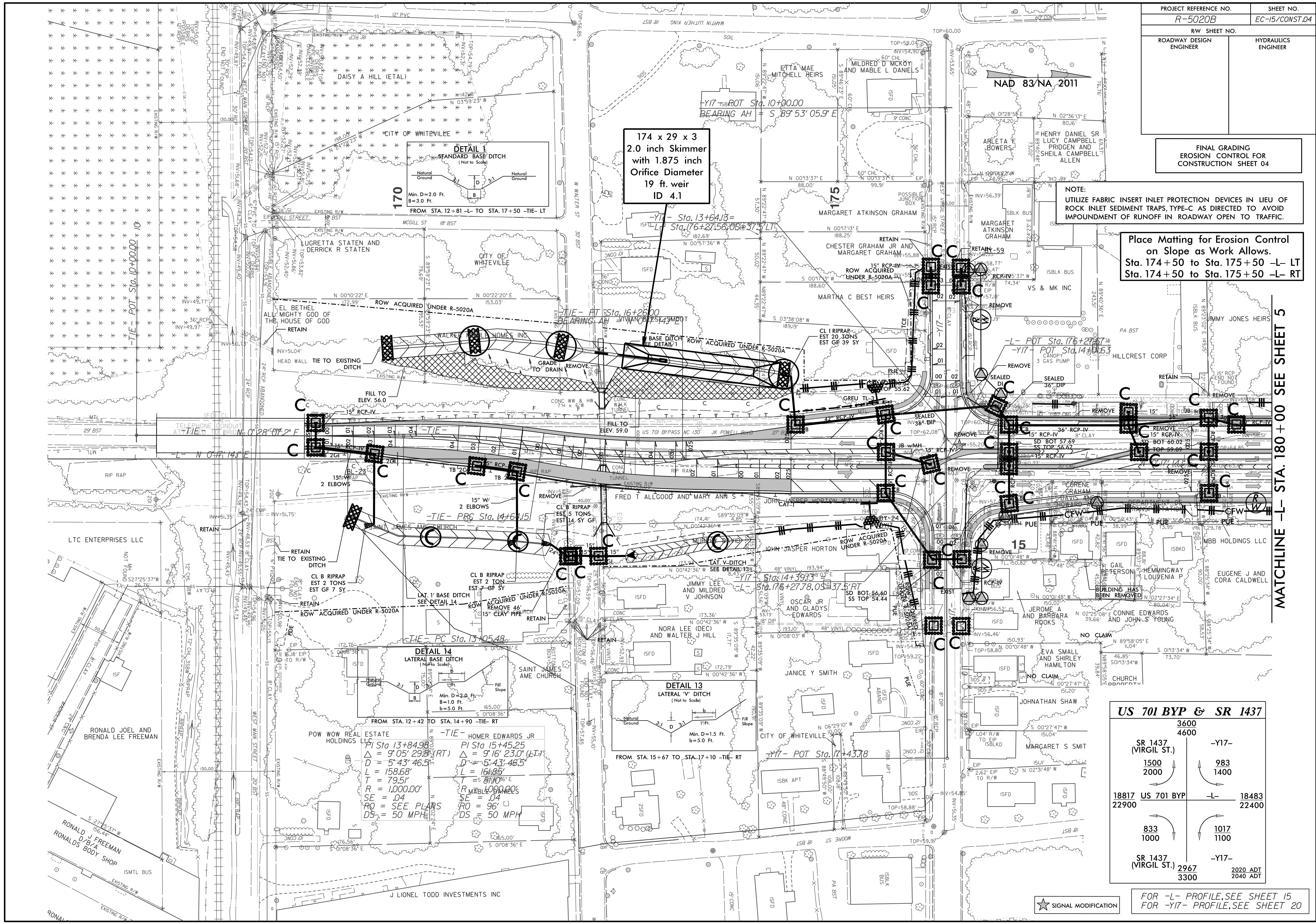


FINAL GRADING
EROSION CONTROL FOR
CONSTRUCTION SHEET 04

NOTE:
UTILIZE FABRIC INSERT INLET PROTECTION DEVICES IN LIEU OF
ROCK INLET SEDIMENT TRAPS, TYPE-C AS DIRECTED TO AVOID
IMPOUNDMENT OF RUNOFF IN ROADWAY OPEN TO TRAFFIC.

Place Matting for Erosion Control
on Slope as Work Allows.
Sta. 174+50 to Sta. 175+50 -L- LT
Sta. 174+50 to Sta. 175+50 -L- RT



MATCHLINE -L- STA. 180+00 SEE SHEET 5

US 701 BYP & SR 1437	
3600	4600
SR 1437 (VIRGIL ST.)	-Y17-
1500	983
2000	1400
18817	US 701 BYP
22900	-L-
18483	22400
833	1017
1000	1100
SR 1437 (VIRGIL ST.)	-Y17-
2967	2020 ADT
3300	2040 ADT

FOR -L- PROFILE, SEE SHEET 15
FOR -Y17- PROFILE, SEE SHEET 20

★ SIGNAL MODIFICATION

