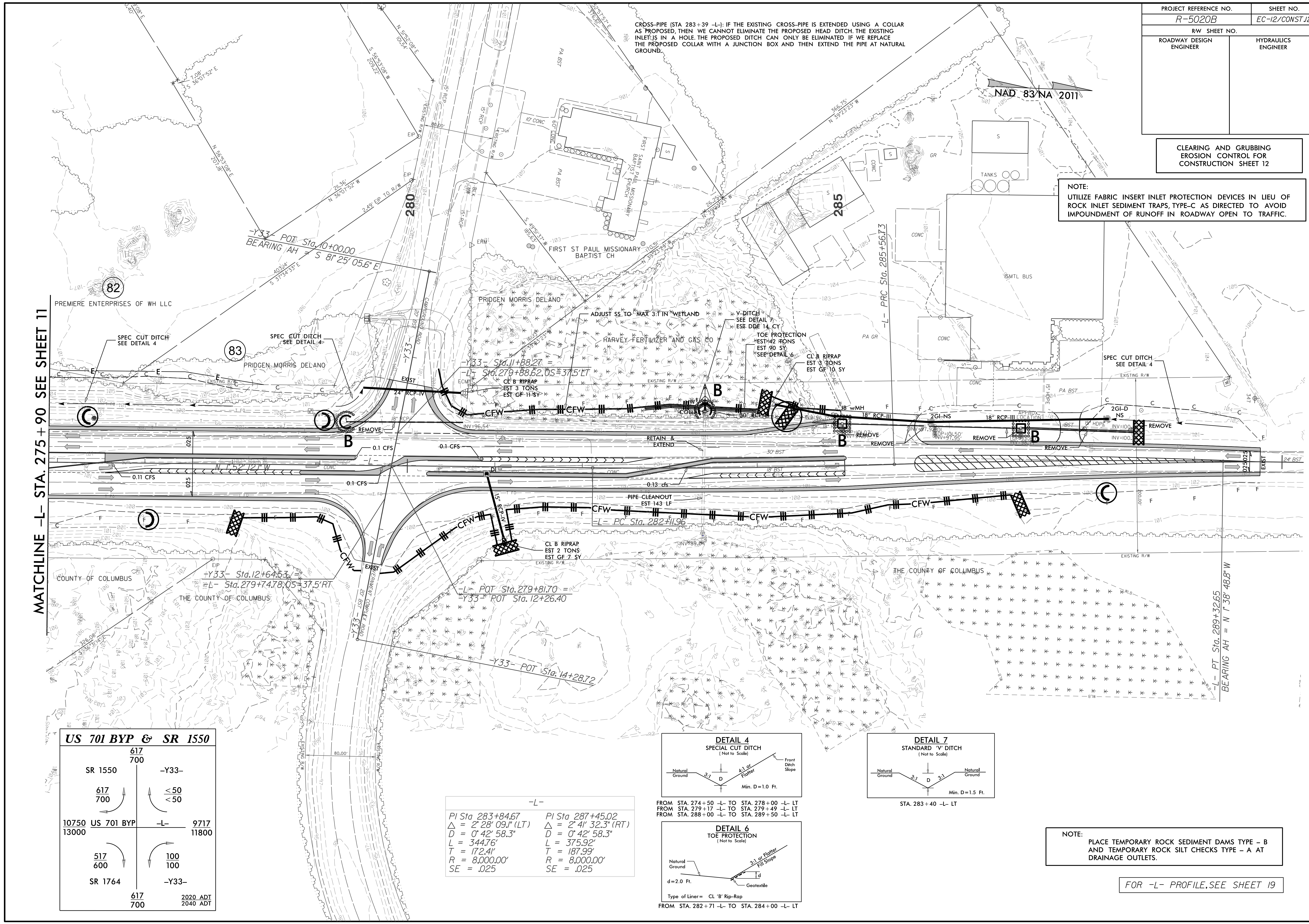


| | |
|-------------------------|---------------------|
| PROJECT REFERENCE NO. | SHEET NO. |
| R-5020B | EC-12/CONST J2 |
| RW SHEET NO. | |
| ROADWAY DESIGN ENGINEER | HYDRAULICS ENGINEER |

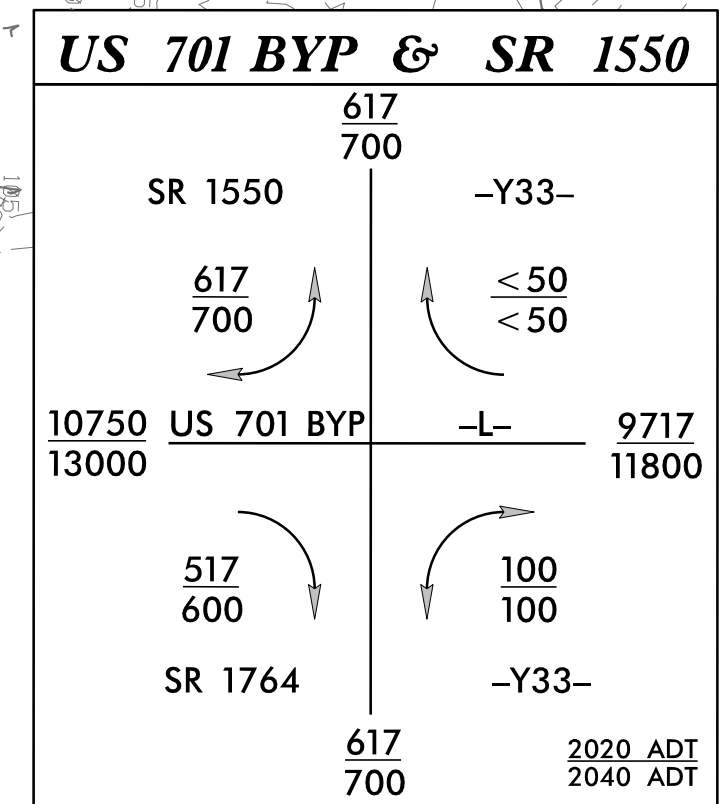
CLEARING AND GRUBBING
EROSION CONTROL FOR
CONSTRUCTION SHEET 12

NOTE:
UTILIZE FABRIC INSERT INLET PROTECTION DEVICES IN LIEU OF
ROCK INLET SEDIMENT TRAPS, TYPE-C AS DIRECTED TO AVOID
IMPOUNDMENT OF RUNOFF IN ROADWAY OPEN TO TRAFFIC.

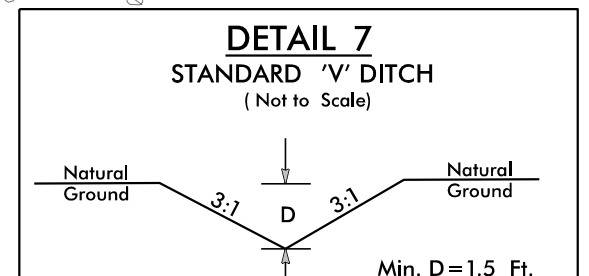
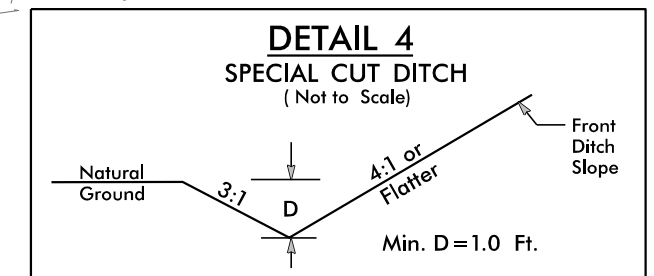
CROSS-PIPE (STA 283+39 -L-): IF THE EXISTING CROSS-PIPE IS EXTENDED USING A COLLAR AS PROPOSED, THEN WE CANNOT ELIMINATE THE PROPOSED HEAD DITCH. THE EXISTING INLET IS IN A HOLE. THE PROPOSED DITCH CAN ONLY BE ELIMINATED IF WE REPLACE THE PROPOSED COLLAR WITH A JUNCTION BOX AND THEN EXTEND THE PIPE AT NATURAL GROUND.



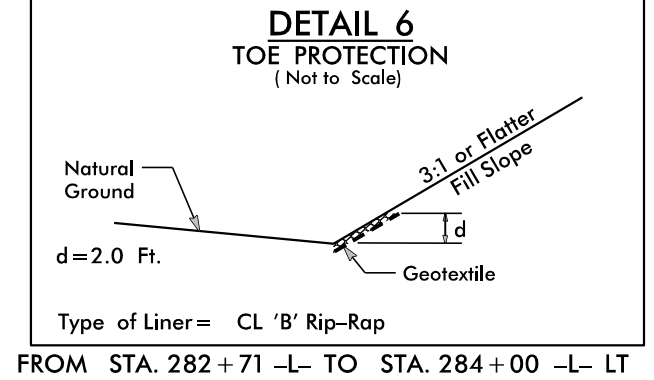
MATCHLINE -L- STA. 275 + 90 SEE SHEET 11



| | |
|-------------------------------|-------------------------------|
| -L- | |
| PI Sta. 283+84.67 | PI Sta. 287+45.02 |
| $\Delta = 2' 28' 09.1''$ (LT) | $\Delta = 2' 41' 32.3''$ (RT) |
| $D = 0' 42' 58.3''$ | $D = 0' 42' 58.3''$ |
| $L = 344.76'$ | $L = 375.92'$ |
| $T = 172.41'$ | $T = 187.99'$ |
| $R = 8,000.00'$ | $R = 8,000.00'$ |
| $SE = .025$ | $SE = .025$ |



FROM STA. 274+50 -L- TO STA. 278+00 -L- LT
FROM STA. 279+17 -L- TO STA. 279+49 -L- LT
FROM STA. 288+00 -L- TO STA. 289+50 -L- LT



NOTE:
PLACE TEMPORARY ROCK SEDIMENT DAMS TYPE - B
AND TEMPORARY ROCK SILT CHECKS TYPE - A AT
DRAINAGE OUTLETS.

FOR -L- PROFILE, SEE SHEET 19