

Location and Surveys

KCI Associates of N.C., P.A.
 4505 Falls of Neuse Rd, Suite 400
 Raleigh, NC 27609
 Phone (919) 783-9214
<http://www.kci.com>

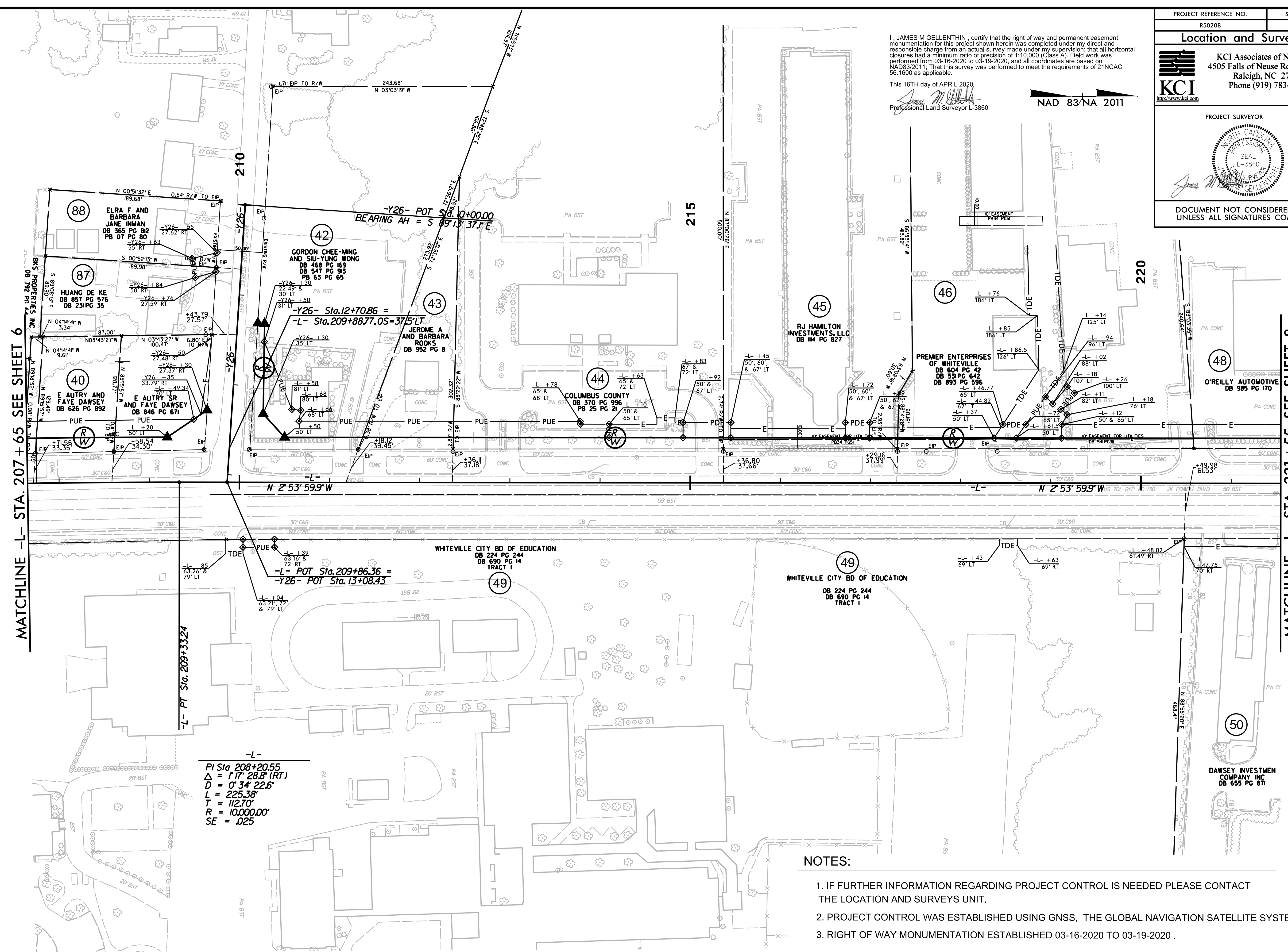
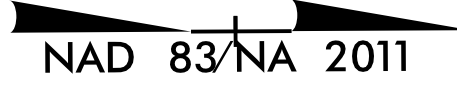
PROJECT SURVEYOR

DOCUMENT NOT CONSIDERED FINAL
 UNLESS ALL SIGNATURES COMPLETED

I, JAMES M GELLENTHIN, certify that the right of way and permanent easement monumentation for this project shown herein was completed under my direct and responsible charge from an actual survey made under my supervision; that all horizontal closures had a minimum ratio of precision of 1:10,000 (Class A). Field work was performed from 03-16-2020 to 03-19-2020, and all coordinates are based on NAD83/2011; That this survey was performed to meet the requirements of 21NCAC 56.1600 as applicable.

This 16TH day of APRIL 2020

James M. Gellenthin
 Professional Land Surveyor L-3860



MATCHLINE -L- STA. 207 + 65 SEE SHEET 6

MATCHLINE -L- STA. 221 + 55 SEE SHEET 8

-L-
 PI Sta 208+20.55
 $\Delta = 1'17" 28.8' (RT)$
 $D = 0' 34' 22.6"$
 $L = 225.38'$
 $T = 112.70'$
 $R = 10,000.00'$
 $SE = .025$

NOTES:

1. IF FURTHER INFORMATION REGARDING PROJECT CONTROL IS NEEDED PLEASE CONTACT THE LOCATION AND SURVEYS UNIT.
2. PROJECT CONTROL WAS ESTABLISHED USING GNSS, THE GLOBAL NAVIGATION SATELLITE SYSTEM.
3. RIGHT OF WAY MONUMENTATION ESTABLISHED 03-16-2020 TO 03-19-2020 .

REVISIONS

6/2/09

I:\15-156-2020-00372 NCDOT - Survey\A-R5020B RW Stationing\DRAWINGS\A-R5020B-1.s-rw07.dgn