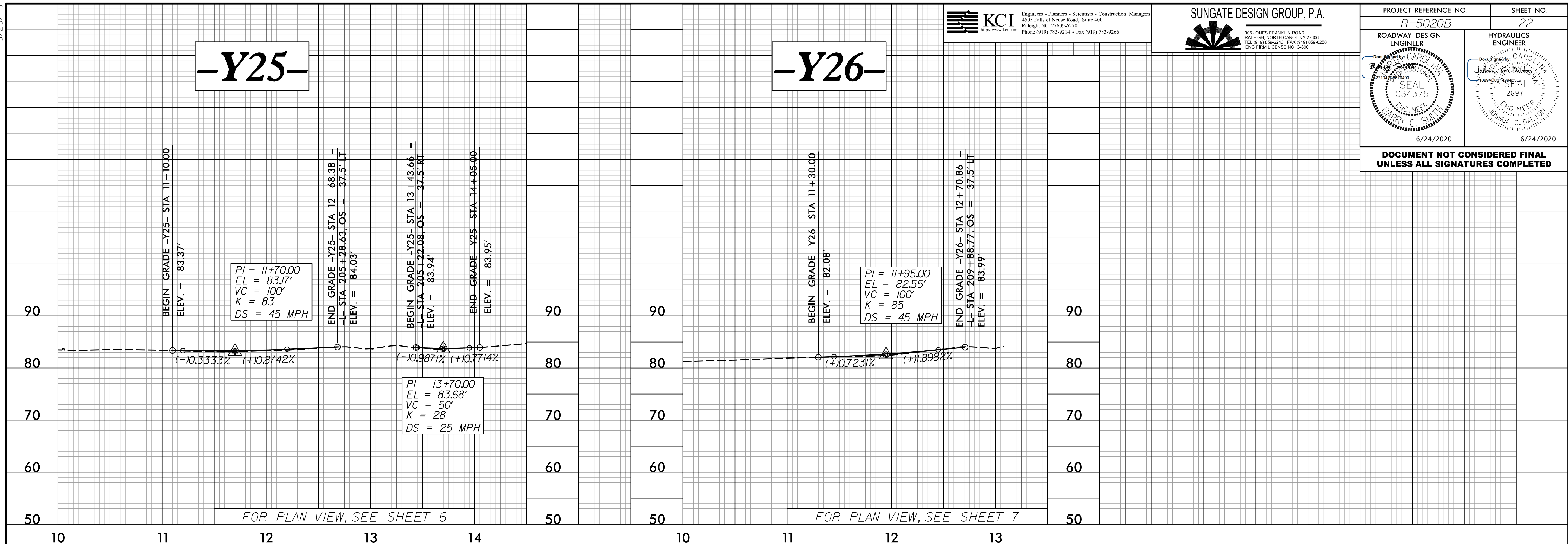


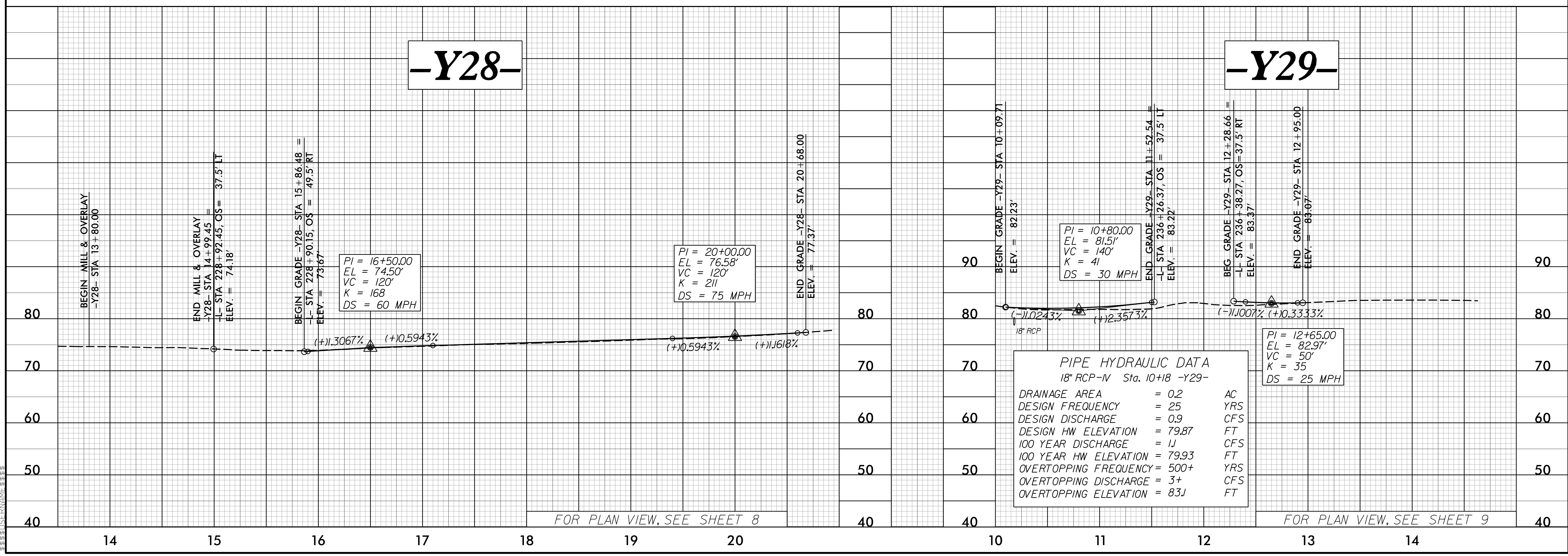
5/28/19

PROJECT REFERENCE NO. <b>R-5020B</b>	SHEET NO. <b>22</b>
ROADWAY DESIGN ENGINEER BARRY C. SMITH Professional Seal 034375 6/24/2020	HYDRAULICS ENGINEER JOSHUA S. DALTON Professional Seal 26971 6/24/2020

**DOCUMENT NOT CONSIDERED FINAL  
UNLESS ALL SIGNATURES COMPLETED**



20\_APR\_2020 11:28 AM  
K:\2016\Projects\5020B\Roadway\Proj\R-5020B\_Rdy.pfl\_sheet\_layout.dgn



**PIPE HYDRAULIC DATA**  
 18" RCP-V Sta. 10+18 -Y29-

DRAINAGE AREA	= 0.2	AC
DESIGN FREQUENCY	= 25	YRS
DESIGN DISCHARGE	= 0.9	CFS
DESIGN HW ELEVATION	= 79.87	FT
100 YEAR DISCHARGE	= 1.1	CFS
100 YEAR HW ELEVATION	= 79.93	FT
OVERTOPPING FREQUENCY	= 500+	YRS
OVERTOPPING DISCHARGE	= 3+	CFS
OVERTOPPING ELEVATION	= 83.1	FT