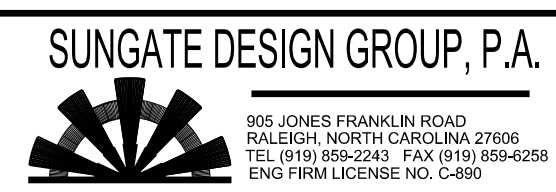
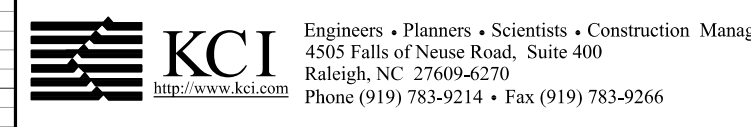


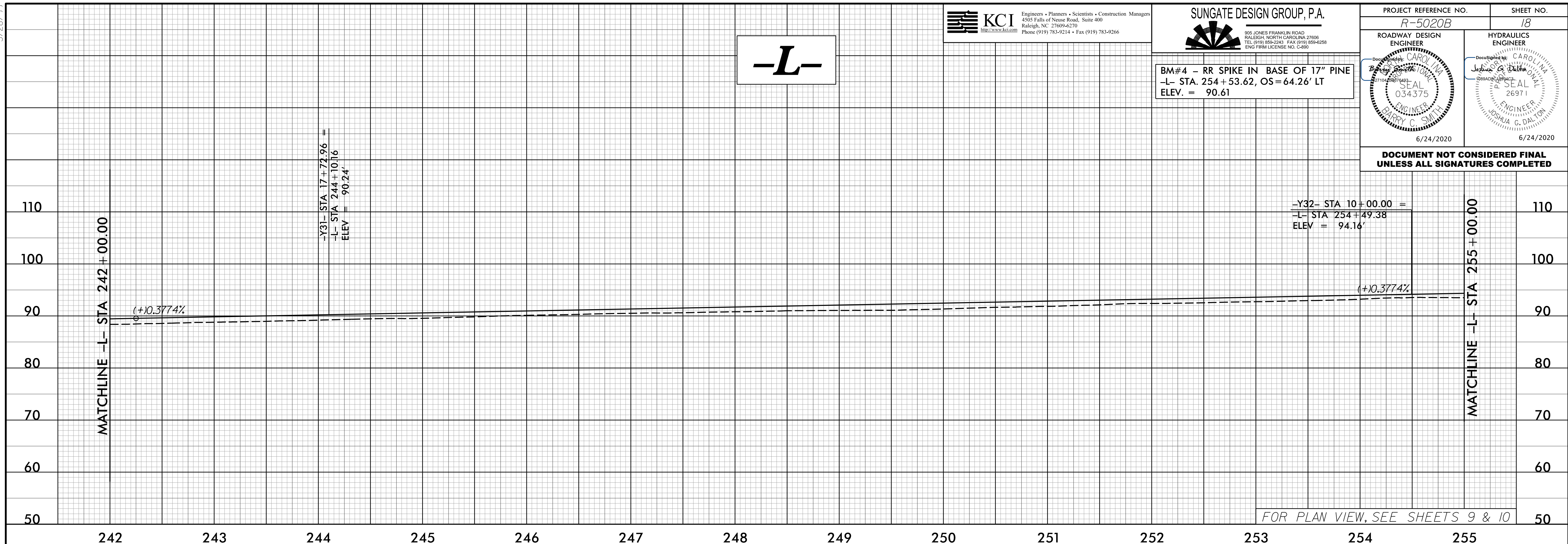
5/28/19



PROJECT REFERENCE NO. <i>R-5020B</i>	SHEET NO. <i>18</i>
ROADWAY DESIGN ENGINEER BRADY C. SMITH 034375 6/24/2020	HYDRAULICS ENGINEER JOSHUA S. DALTON 26971 6/24/2020

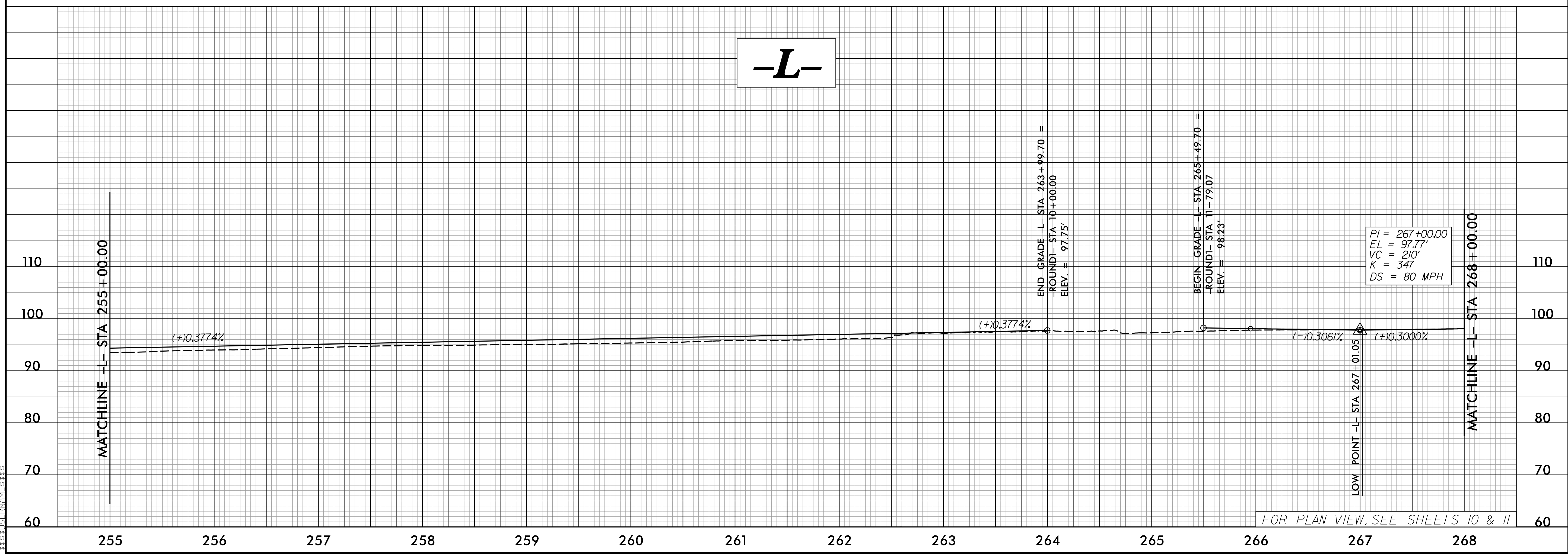
BM#4 - RR SPIKE IN BASE OF 17" PINE
 -L- STA. 254 + 53.62, OS = 64.26' LT
 ELEV. = 90.61

**DOCUMENT NOT CONSIDERED FINAL
 UNLESS ALL SIGNATURES COMPLETED**



FOR PLAN VIEW, SEE SHEETS 9 & 10

P:\A\FR-2020\11289 NCDDOT R-5020B US 701 Widening\Roadway\Proj\R-5020B_Rdu.pfl_sheet_layout.dgn
 11/28/19 10:53 AM
 BRADY C. SMITH
 034375



FOR PLAN VIEW, SEE SHEETS 10 & 11