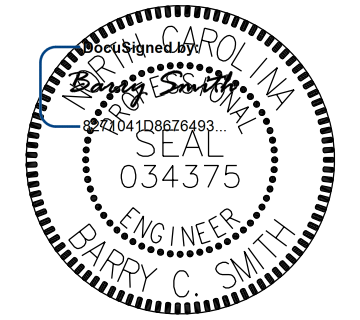
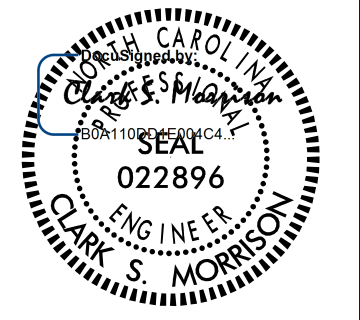



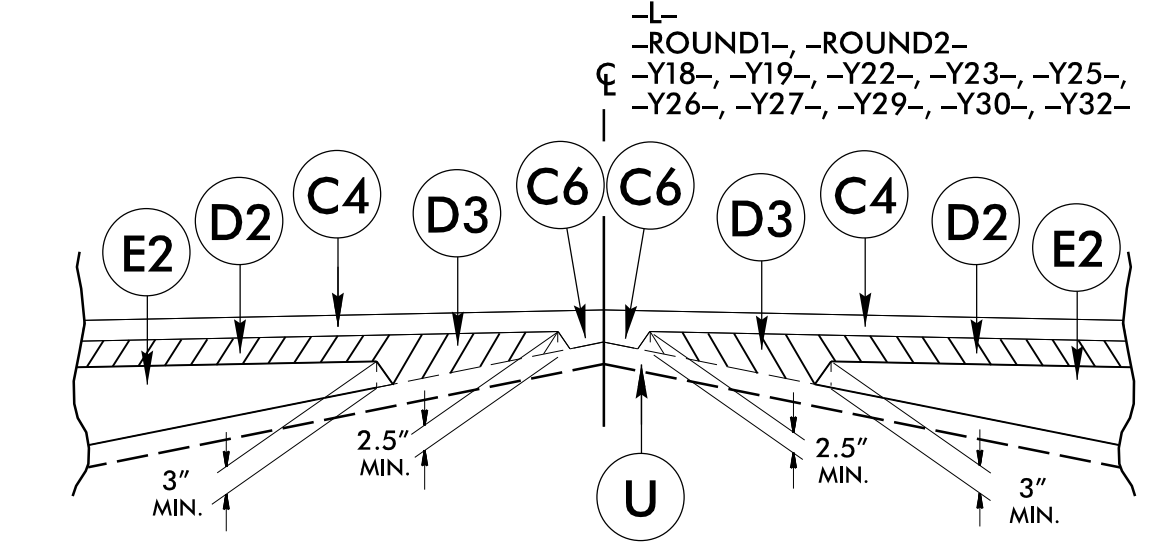
6/22/20

PAVEMENT SCHEDULE (FINAL PAVEMENT DESIGN)

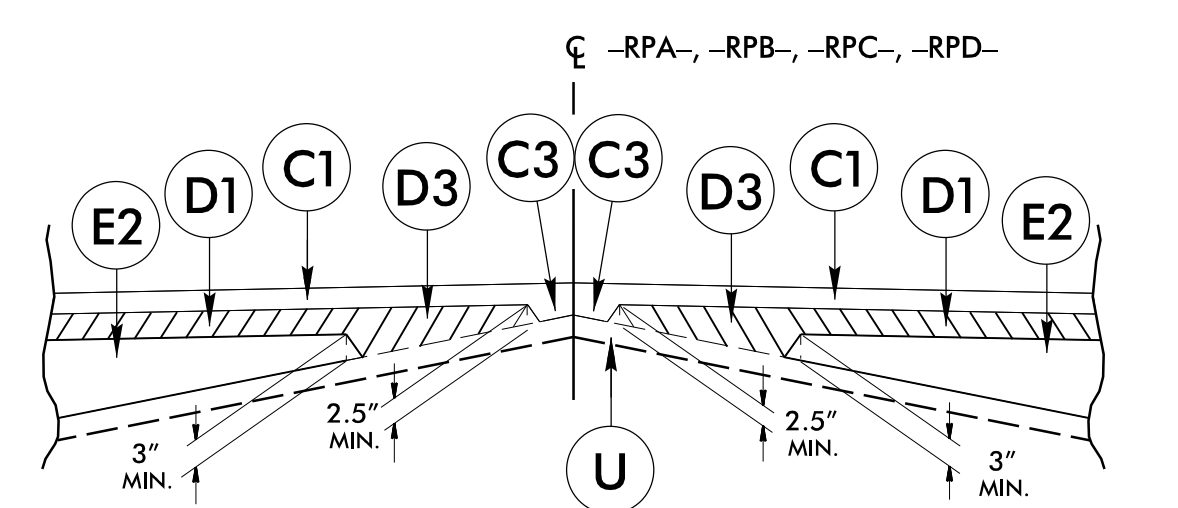
C1	PROP. APPROX. 1.5" ASPHALT CONCRETE SURFACE COURSE, TYPE S9.5B, AT AN AVERAGE RATE OF 165 LBS. PER SQ. YD.	R5	2' CONCRETE VALLEY GUTTER
C2	PROP. APPROX. 3" ASPHALT CONCRETE SURFACE COURSE, TYPE S9.5B, AT AN AVERAGE RATE OF 165 LBS. PER SQ. YD. IN EACH OF TWO LAYERS.	R6	5" MONOLITHIC ISLAND (SURFACE MOUNTED)
C3	PROP. VAR. DEPTH ASPHALT CONCRETE SURFACE COURSE, TYPE S9.5B, AT AN AVERAGE RATE OF 110 LBS. PER SQ. YD. PER 1" DEPTH TO BE PLACED IN LAYERS NOT LESS THAT 1" IN DEPTH OR GREATER THAN 1.5" IN DEPTH.	R7	8"x12" CONCRETE CURB
C4	PROP. APPROX. 1.5" ASPHALT CONCRETE SURFACE COURSE, TYPE S9.5C, AT AN AVERAGE RATE OF 168 LBS. PER SQ. YD.	R8	2" ROLLED CONCRETE CURB
C5	PROP. APPROX. 3" ASPHALT CONCRETE SURFACE COURSE, TYPE S9.5C, AT AN AVERAGE RATE OF 168 LBS. PER SQ. YD. IN EACH OF TWO LAYERS.	R9	SHOULDER BERM GUTTER
C6	PROP. VAR. DEPTH ASPHALT CONCRETE SURFACE COURSE, TYPE S9.5C, AT AN AVERAGE RATE OF 112 LBS. PER SQ. YD. PER 1" DEPTH TO BE PLACED IN LAYERS NOT LESS THAT 1.5" IN DEPTH OR GREATER THAN 2" IN DEPTH.	S	4" CONC. SIDEWALK
D1	PROP. APPROX. 2.5" ASPHALT CONCRETE INTERMEDIATE COURSE, TYPE I19.0C, AT AN AVERAGE RATE OF 285 LBS. PER SQ. YD.	T	EARTH MATERIAL
D2	PROP. APPROX. 4" ASPHALT CONCRETE INTERMEDIATE COURSE, TYPE I19.0C, AT AN AVERAGE RATE OF 456 LBS. PER SQ. YD.	U	EXISTING PAVEMENT
D3	PROP. VAR. DEPTH ASPHALT CONCRETE INTERMEDIATE COURSE, TYPE I19.0C, AT AN AVERAGE RATE OF 114 LBS. PER SQ. YD. PER 1" DEPTH, TO BE PLACED IN LAYERS NOT LESS THAN 2.5" IN DEPTH OR GREATER THAN 4" IN DEPTH.	V1	INCIDENTAL MILLING
E1	PROP. APPROX. 4" ASPHALT CONCRETE BASE COURSE, TYPE B25.0C, AT AN AVERAGE RATE OF 456 LBS. PER SQ. YD.	V2	MILLING ASPHALT PAVEMENT (1.5" DEPTH)
E2	PROP. VAR. DEPTH ASPHALT CONCRETE BASE COURSE, TYPE B25.0C, AT AN AVERAGE RATE OF 114 LBS. PER SQ. YD. PER 1" DEPTH, TO BE PLACED IN LAYERS NOT GREATER THAN 5.5" IN DEPTH OR LESS THAN 3" IN DEPTH	W1	WEDGING DETAIL #1
R1	1'-6" CONC. CURB AND GUTTER	W2	WEDGING DETAIL #2
R2	2'-6" CONC. CURB AND GUTTER	W3	WEDGING DETAIL #3
R3	8"x18" CONCRETE CURB	W4	WEDGING DETAIL #4
R4	9" JOINTED CONCRETE TRUCK APRON WITH WIRE MESH REINFORCEMENT		

NOTE: PAVEMENT EDGE SLOPES ARE 1:1 UNLESS SHOWN OTHERWISE

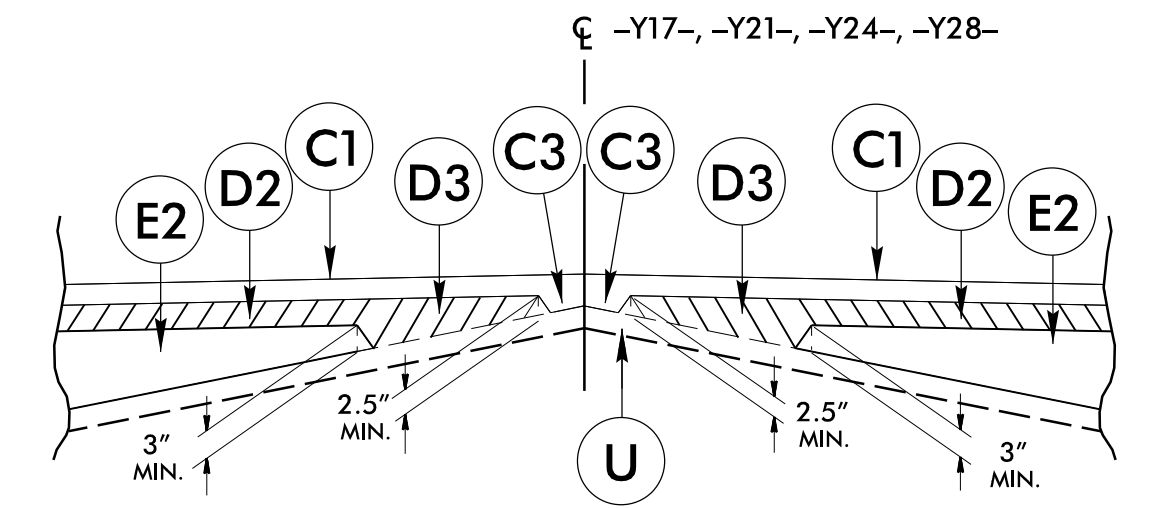
PROJECT REFERENCE NO. R-5020B	SHEET NO. 2A-1
ROADWAY DESIGN ENGINEER  6/24/2020	PAVEMENT DESIGN ENGINEER  6/30/2020
DOCUMENT NOT CONSIDERED FINAL UNLESS ALL SIGNATURES COMPLETED	
 KCI Engineers • Planners • Scientists • Construction Managers 4505 Falls of Neuse Road, Suite 400 Raleigh, NC 27609 Phone (919) 783-9214 • Fax (919) 783-9266	



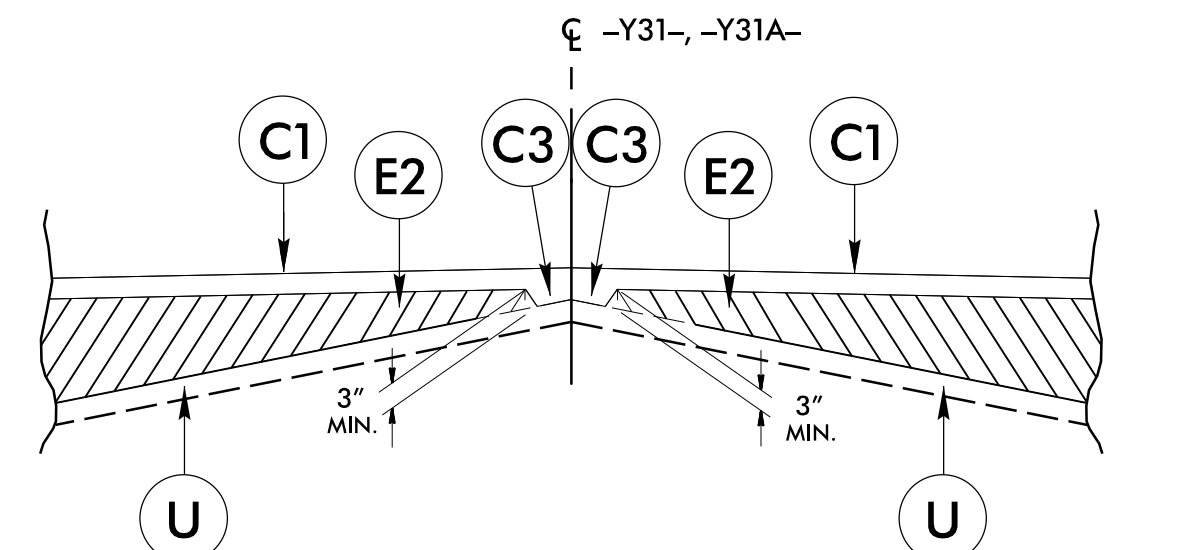
DETAIL SHOWING METHOD OF WEDGING (W1)



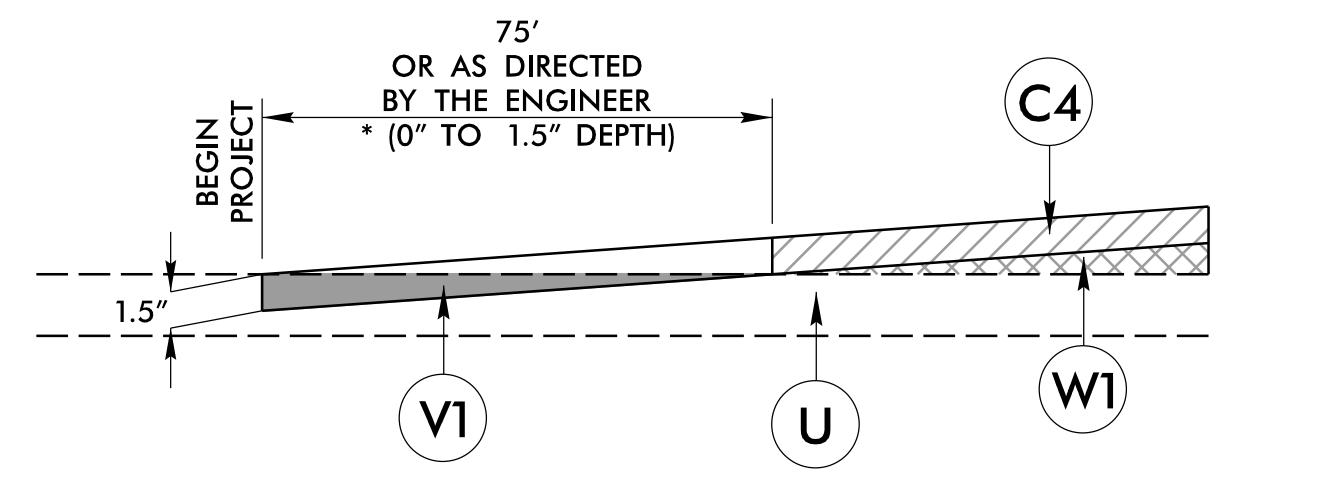
DETAIL SHOWING METHOD OF WEDGING (W2)



DETAIL SHOWING METHOD OF WEDGING (W3)



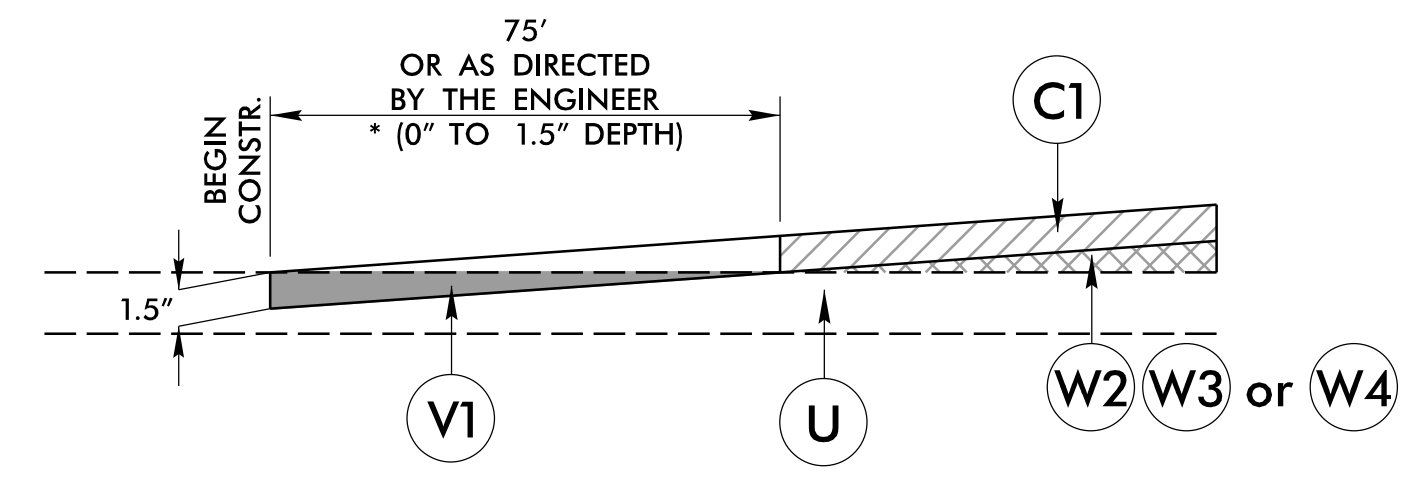
DETAIL SHOWING METHOD OF WEDGING (W4)



NOTE: MIRROR FOR END PROJECT CONSTR. * MILL DEPTH AS SHOWN ON PLANS OR AS DIRECTED BY THE ENGINEER

PAVEMENT MILLING DETAIL KEY-IN (TIE-IN) #1

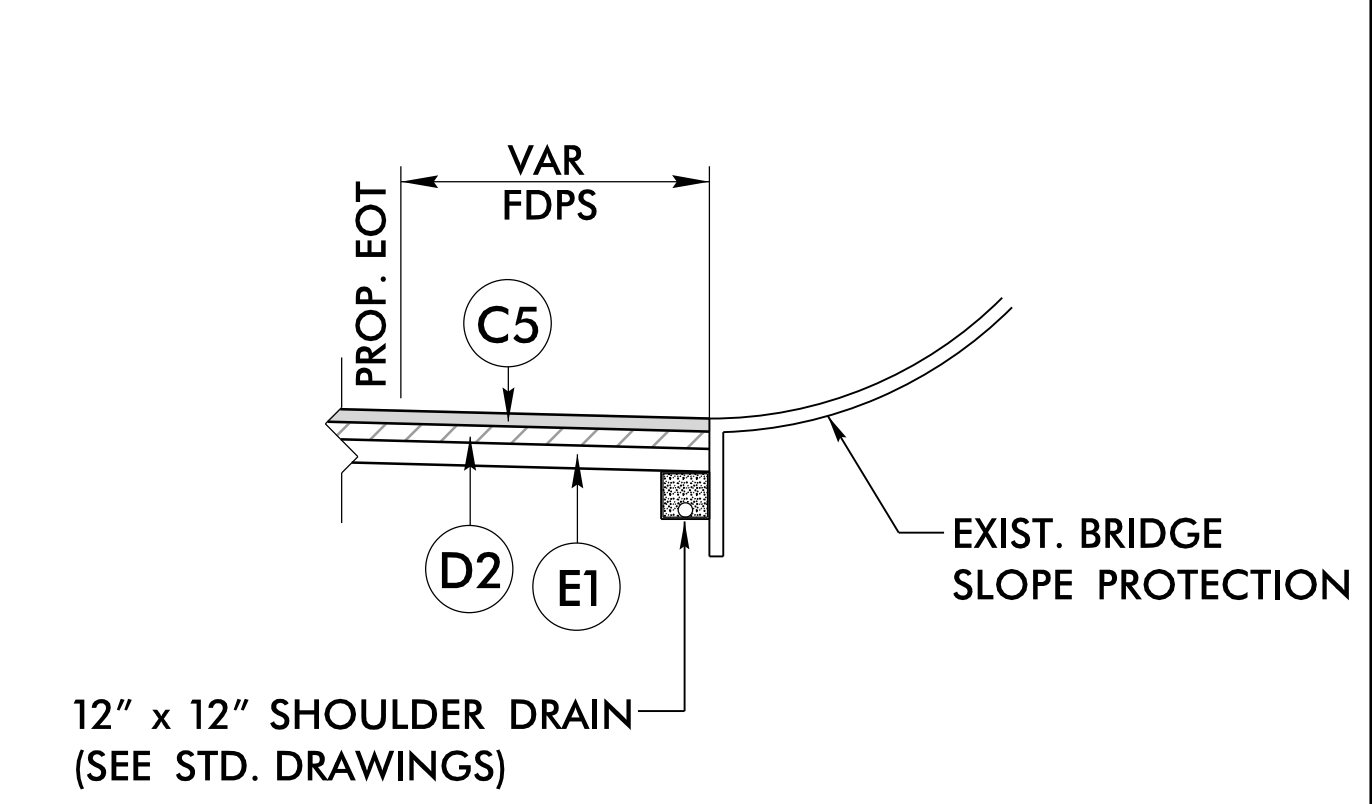
-L-	STA. 289+00.00 TO STA. 289+75.00
-Y18-	STA. 11+40.00 TO STA. 12+15.00
-Y19-	STA. 11+40.00 TO STA. 12+15.00
-Y22-	STA. 11+80.00 TO STA. 12+10.00
-Y22-	STA. 14+20.00 TO STA. 14+30.00
-Y23-	STA. 11+25.00 TO STA. 11+65.00
-Y25-	STA. 11+10.00 TO STA. 11+85.00
-Y25-	STA. 13+43.66 TO STA. 14+05.00
-Y26-	STA. 11+30.00 TO STA. 12+05.00
-Y29-	STA. 10+09.71 TO STA. 10+20.00
-Y29-	STA. 12+75.00 TO STA. 12+95.00
-Y30-	STA. 11+20.00 TO STA. 11+95.00
-Y30-	STA. 14+10.00 TO STA. 14+85.00
-Y32-	STA. 10+70.00 TO STA. 11+22.00



NOTE: MIRROR FOR END CONSTR. * MILL DEPTH AS SHOWN ON PLANS OR AS DIRECTED BY THE ENGINEER

PAVEMENT MILLING DETAIL KEY-IN (TIE-IN) #2

-Y17-	STA. 11+85.00 TO STA. 12+05.00
-Y17-	STA. 15+30.00 TO STA. 15+50.00
-Y21-	STA. 11+85.00 TO STA. 12+60.00
-Y21-	STA. 14+55.00 TO STA. 14+80.00
-Y24-	STA. 11+15.00 TO STA. 11+90.00
-Y24-	STA. 16+20.00 TO STA. 16+85.00
-Y28-	STA. 14+37.00 TO STA. 14+99.45
-Y28-	STA. 19+93.00 TO STA. 20+68.00
-Y31-	STA. 12+25.00 TO STA. 13+00.00
-Y31A-	STA. 11+12.00 TO STA. 11+30.00
-RPA-	STA. 13+47.27 TO STA. 13+80.00
-RPB-	STA. 11+30.00 TO STA. 12+05.00
-RPC-	STA. 15+00.00 TO STA. 15+60.00
-RPD-	STA. 12+20.00 TO STA. 12+95.00

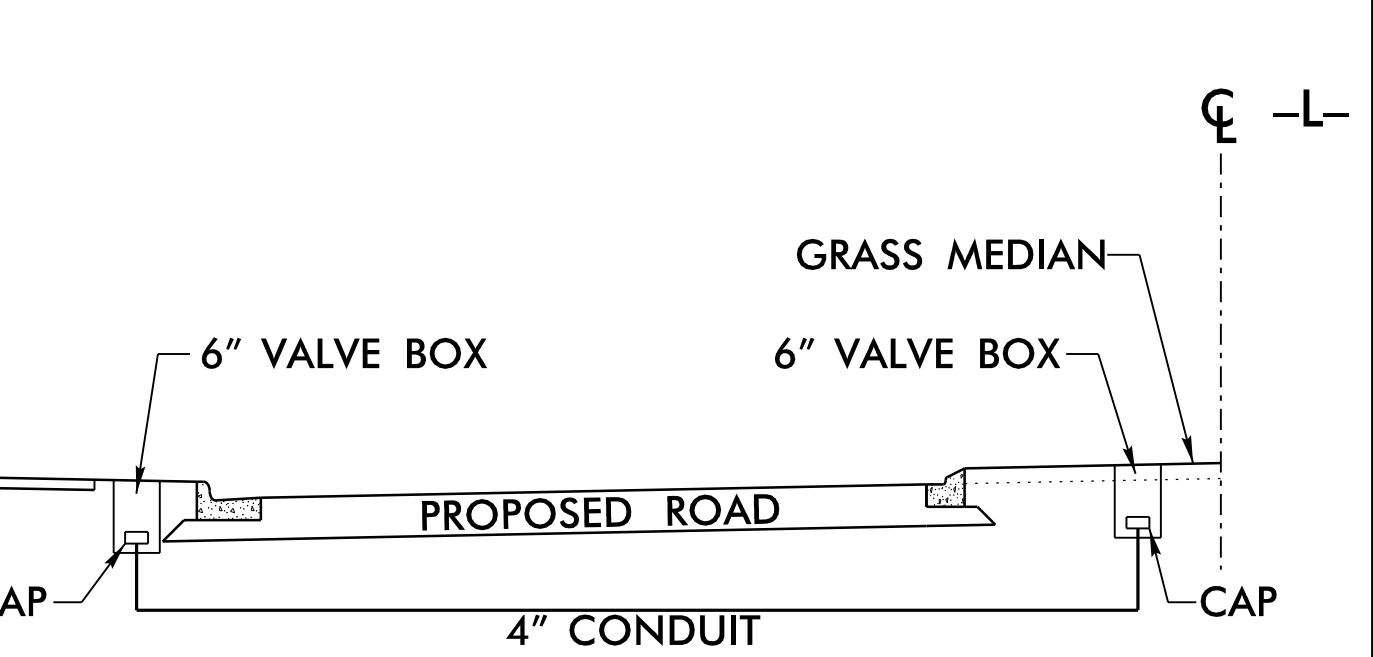


DETAIL OF SHOULDER DRAINS
(USE IN CONJUNCTION WITH TYP. SECT. NO. 4)

-L- STA. 266+00.00 TO STA. 271+80.00 LT.
(OUTFALLS = DRAINAGE STR. 1115 & STR. 1151)

-L- STA. 265+50.00 TO STA. 271+80.00 RT.
(OUTFALL = DRAINAGE STR. 1113)

NOTE: ADJUST DEPTH OF DRAIN AS NECESSARY TO PROPERLY DRAIN OR AS DIRECTED BY ENGINEER



4" PVC IRRIGATION CONDUIT DETAIL
(SEE SPECIAL PROVISIONS)

NOTES:

- 1) USE 4" SDR21 PVC CONDUIT OR AS DIRECTED BY RESIDENT ENGINEER
- 2) FOR VALVE BOX DETAILS SEE UTILITY CONSTRUCTION PLANS
- 3) CONTRACTOR WILL DRILL/BORE 4" CONDUIT SLEEVE TO ACCOMMODATE IRRIGATION TO ISLANDS PER RESIDENT ENGINEER DIRECTION.

R:\APR-2020\11289\11289.dwg NCDDOT R-5020B US 701 widening\Roadway\Proc\11289\11289.dwg