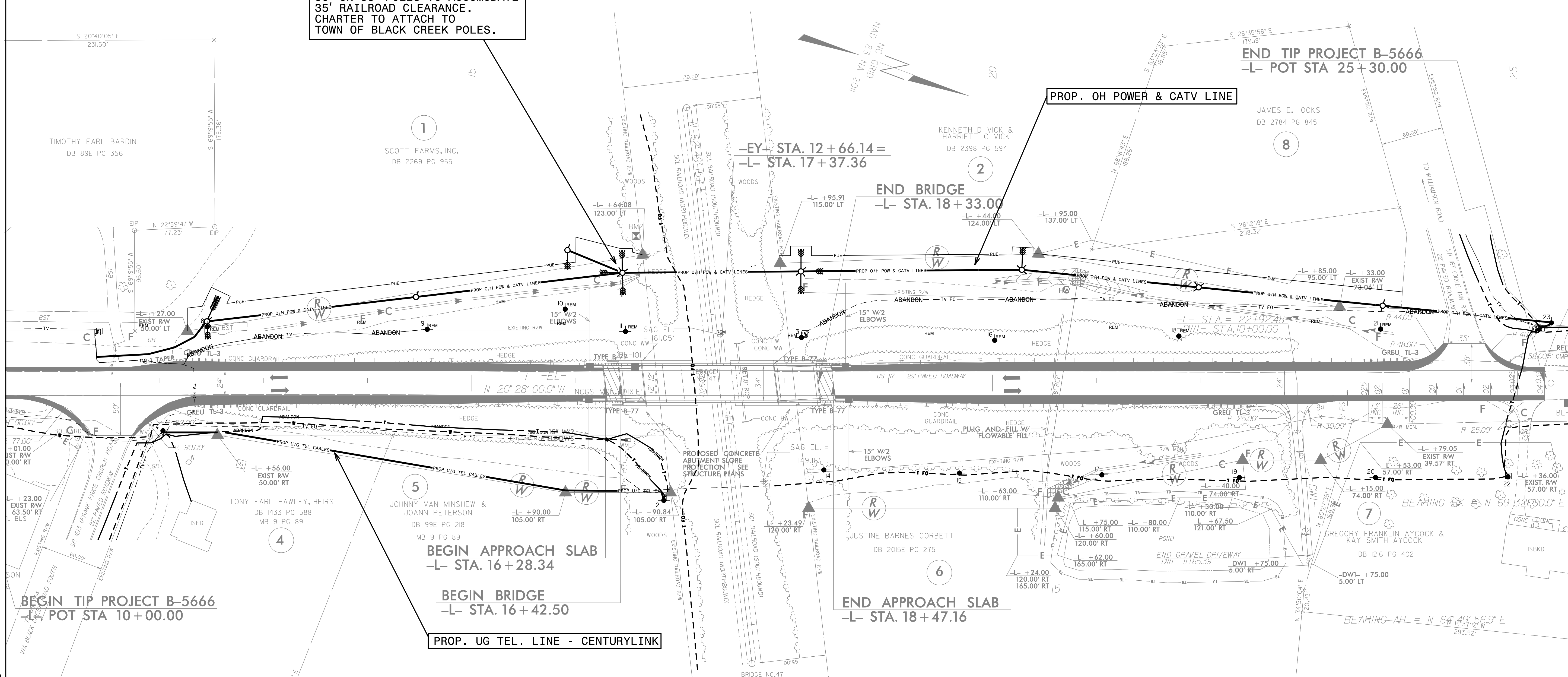


## UTILITIES BY OTHERS

ALL PROPOSED UTILITY WORK SHOWN ON THIS SHEET WILL BE DONE BY OTHERS. NO PAYMENT WILL BE MADE TO THE CONTRACTOR FOR PROPOSED UTILITY WORK SHOWN ON THIS SHEET.

TOWN OF BLACK CREEK TO SET 50' OR 55' POLES TO ACCOMMODATE 35' RAILROAD CLEARANCE. CHARTER TO ATTACH TO TOWN OF BLACK CREEK POLES.

5/14/99  
101945 21-B-5666-09:38  
C:\Users\jg\Documents\2002-B-5666-rdy04-ut-02-psh.dgn



TIMOTHY EARL BARDIN  
DB 89E PG 356

1  
SCOTT FARMS, INC.  
DB 2269 PG 955

2  
KENNETH D VICK &  
HARRIETT C VICK  
DB 2398 PG 594

8  
JAMES E. HOOKS  
DB 2784 PG 845

4  
TONY EARL HAWLEY, HEIRS  
DB 1433 PG 588  
MB 9 PG 89

5  
JOHNNY VAN MINSEW &  
JOANN PETERSON  
DB 99E PG 218  
MB 9 PG 89

6  
JUSTINE BARNES CORBETT  
DB 2015E PG 275

7  
GREGORY FRANKLIN AYCOCK &  
KAY SMITH AYCOCK  
DB 1216 PG 402

BEGIN TIP PROJECT B-5666  
-L- POT STA 10+00.00

BEGIN APPROACH SLAB  
-L- STA. 16+28.34

BEGIN BRIDGE  
-L- STA. 16+42.50

END APPROACH SLAB  
-L- STA. 18+47.16

END TIP PROJECT B-5666  
-L- POT STA 25+30.00

-EY- STA. 12+66.14 =  
-L- STA. 17+37.36

END BRIDGE  
-L- STA. 18+33.00

-L- STA. 22+92.48 =  
-DWT- STA. 10+00.00

PROP. UG TEL. LINE - CENTURYLINK

PROP. OH POWER & CATV LINE

PROPOSED CONCRETE  
ABUTMENT SLOPE  
PROTECTION - SEE  
STRUCTURE PLANS

END GRAVEL DRIVEWAY  
-DWT- 11+65.39  
-DWT- 11+75.00  
5.00' RT

BEARING AH = N 64° 49' 56.9" E  
293.92'