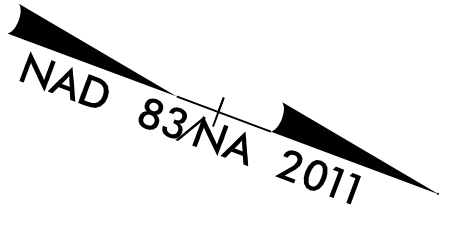


PROJECT REFERENCE NO.	SHEET NO.
B-5666	EC-6/CONST.4
RW SHEET NO.	4
ROADWAY DESIGN ENGINEER	HYDRAULICS ENGINEER

Place Matting for Erosion Control on Slope as Work Allows. Sta. 13+00 to Sta. 24+00



INSTALL MATTING FOR IN THE PROPOSED DITCH LINE FROM -L- 13+00 LT TO 16+61.4 LT.

INSTALL MATTING FOR IN THE PROPOSED DITCH LINE FROM -L- 20+50 LT TO 20+83.6 LT. FROM -L- 20+83.9 LT TO 23+85 LT.

INSTALL PSRM IN THE PROPOSED DITCH LINE FROM -L- 20+00 LT TO 20+50 LT

Temporary Rock Silt Check Type A 3 ft. weir height

Temporary Rock Silt Check Type A 3 ft. weir height

Temporary Rock Silt Check Type A 2.25 ft. weir height

8/17/99

POT Sta. 10+00.00

ROY LEWIS JOHNSON DB 2656 PG 366

4/14/05 05:00:19/45.22 B-5666.Roads.dwg NCADDY.PS (N.B-5666-ESC-esh06.FINAL.dgn
 Sawyer, Walters

TIMOTHY EARL BARDIN DB 89E PG 356

SCOTT FARMS, INC. DB 2269 PG 955

KENNETH D. VICK & HARRIETT C. VICK DB 2398 PG 594

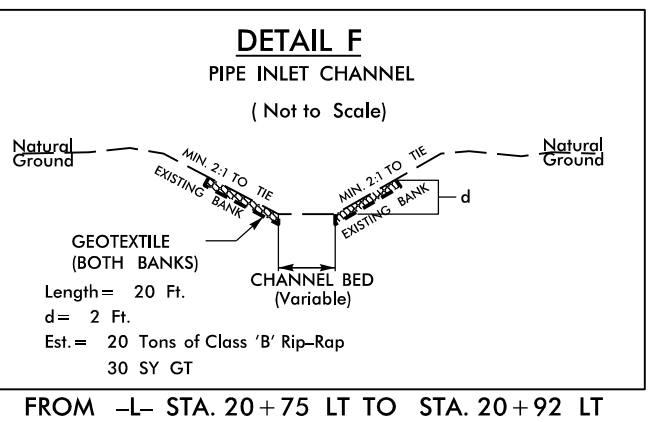
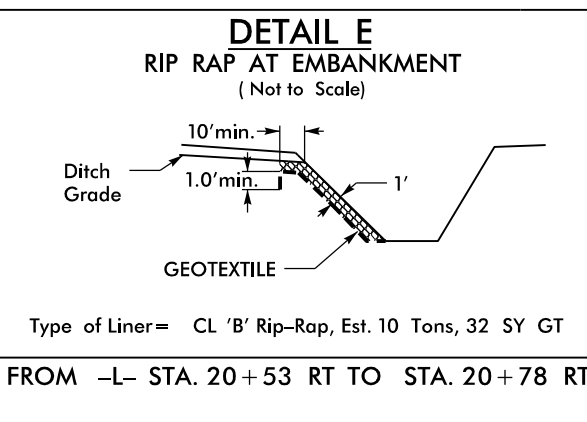
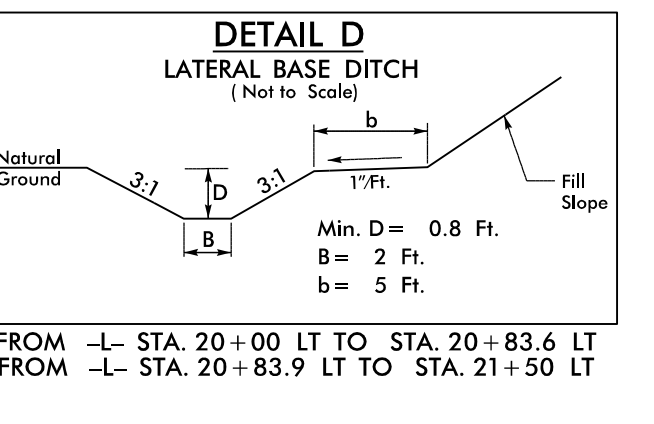
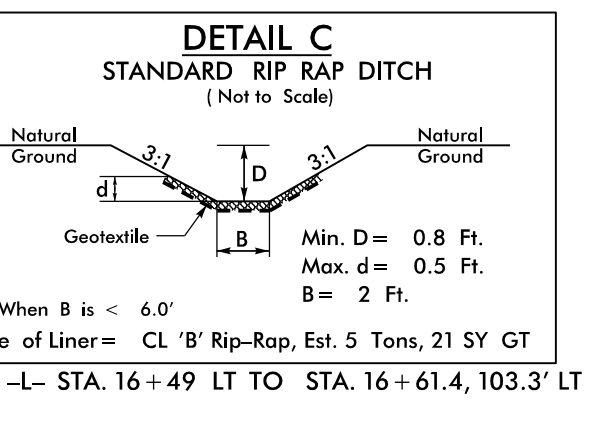
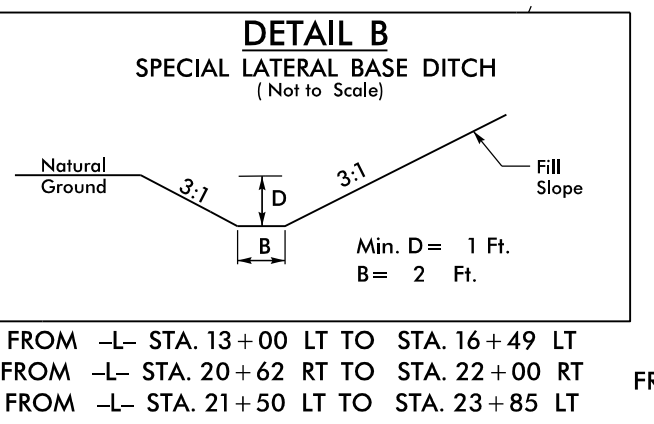
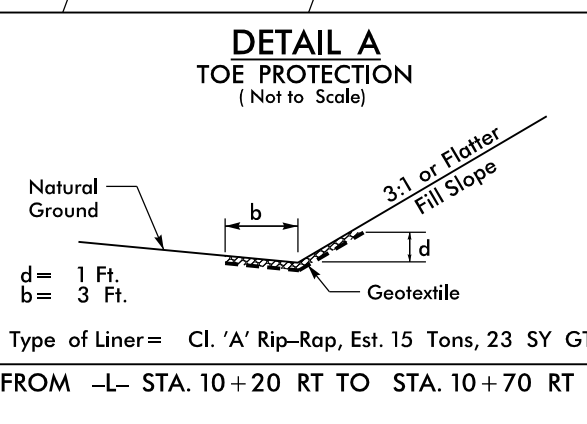
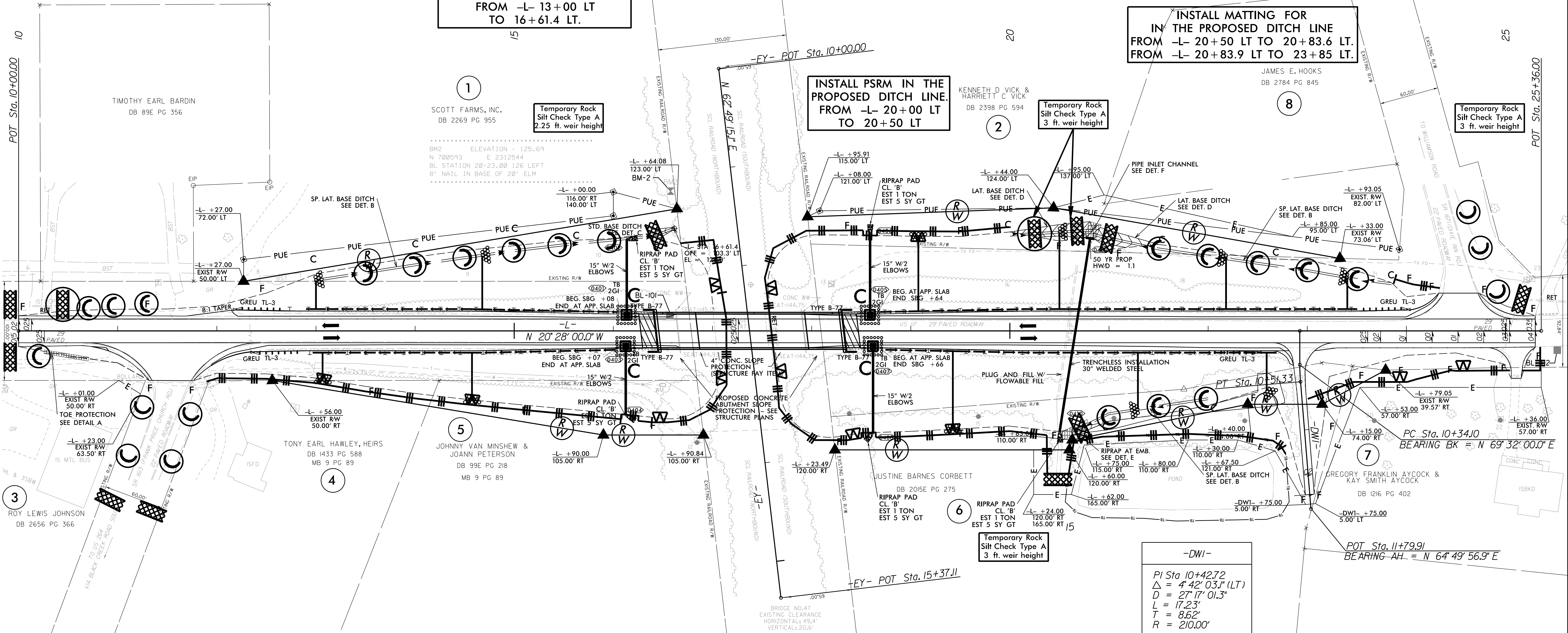
JAMES E. HOOKS DB 2784 PG 845

TONY EARL HAWLEY, HEIRS DB 1433 PG 588 MB 9 PG 89

JOHNNY VAN MINSHEW & JOANN PETERSON DB 99E PG 218 MB 9 PG 89

JUSTINE BARNES CORBETT DB 2015E PG 275

GREGORY FRANKLIN AYCOCK & KAY SMITH AYCOCK DB 1216 PG 402



-DWI-
 PI Sta. 10+42.72
 $\Delta = 4' 42'' 03.1''$ (LT)
 $D = 27' 17'' 01.3''$
 $L = 17.23'$
 $T = 8.62'$
 $R = 210.00'$

INSTALL MATTING FOR IN THE PROPOSED DITCH LINE FROM -L- 20+62 RT TO 22+00 RT.

LEGEND