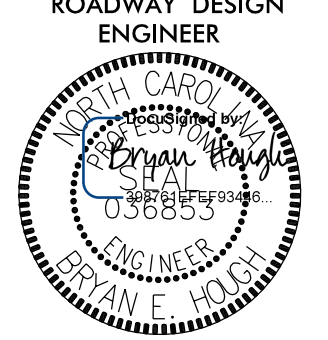
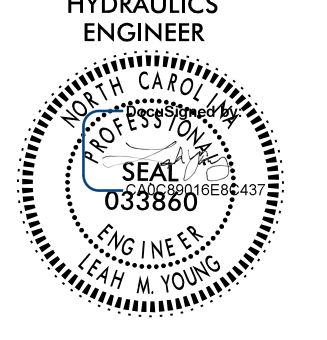


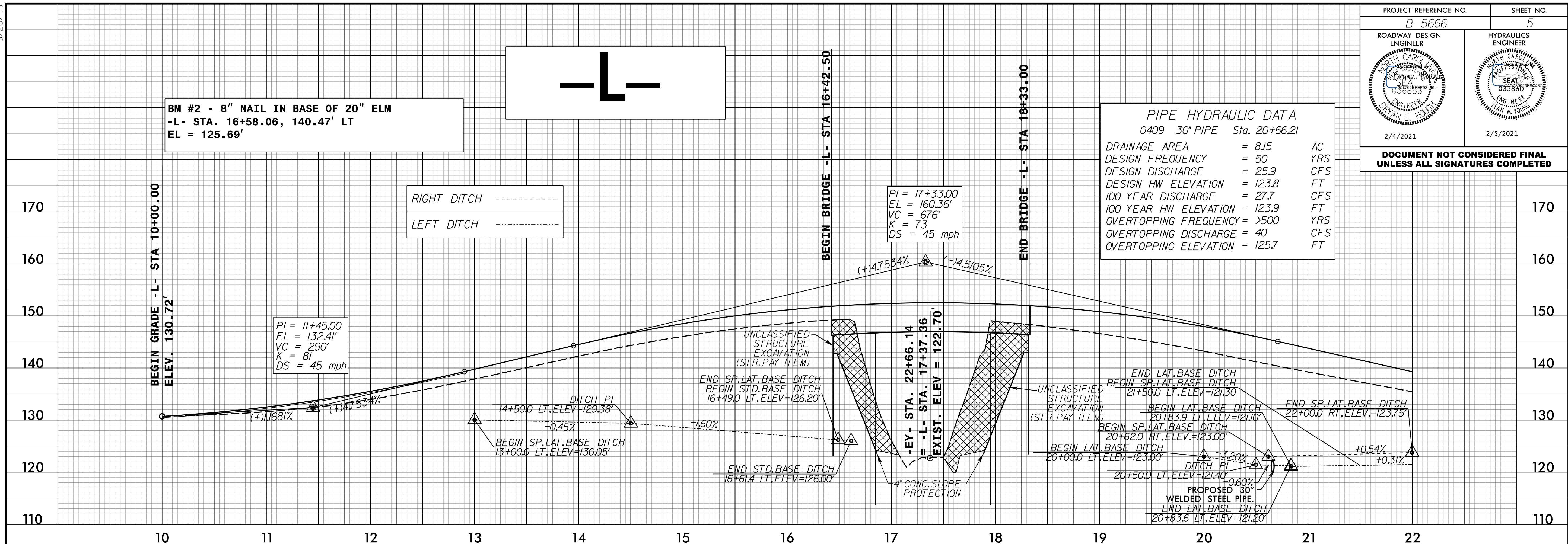
5/28/99

PROJECT REFERENCE NO. <b>B-5666</b>	SHEET NO. <b>5</b>
ROADWAY DESIGN ENGINEER 	HYDRAULICS ENGINEER 
2/4/2021	2/5/2021

**PIPE HYDRAULIC DATA**  
0409 30" PIPE Sta. 20+66.21

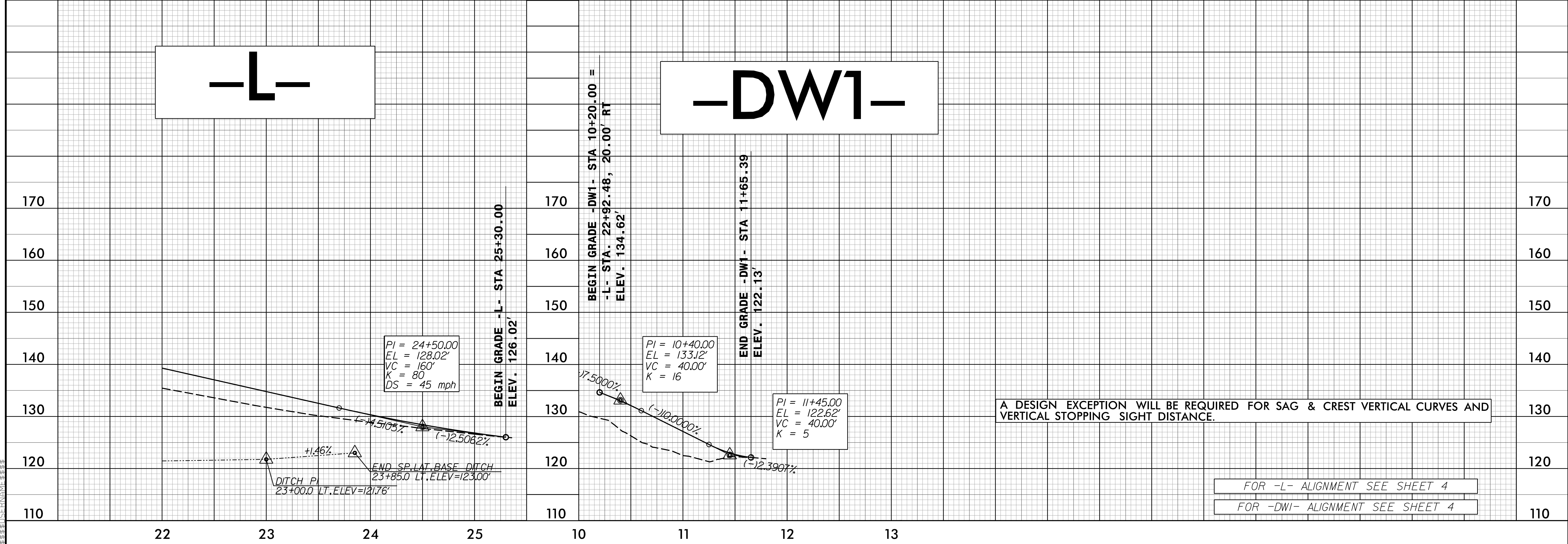
DRAINAGE AREA	= 8.15	AC
DESIGN FREQUENCY	= 50	YRS
DESIGN DISCHARGE	= 25.9	CFS
DESIGN HW ELEVATION	= 123.8	FT
100 YEAR DISCHARGE	= 27.7	CFS
100 YEAR HW ELEVATION	= 123.9	FT
OVERTOPPING FREQUENCY	= >500	YRS
OVERTOPPING DISCHARGE	= 40	CFS
OVERTOPPING ELEVATION	= 125.7	FT

**DOCUMENT NOT CONSIDERED FINAL UNLESS ALL SIGNATURES COMPLETED**



**-L-**

**-DW1-**



A DESIGN EXCEPTION WILL BE REQUIRED FOR SAG & CREST VERTICAL CURVES AND VERTICAL STOPPING SIGHT DISTANCE.

FOR -L- ALIGNMENT SEE SHEET 4  
FOR -DW1- ALIGNMENT SEE SHEET 4

DC:\N\2021\508\04\18\02\00\04\22 B-5666\Roadway\Proj\B-5666\_Rdy.pfl.psh.dgn