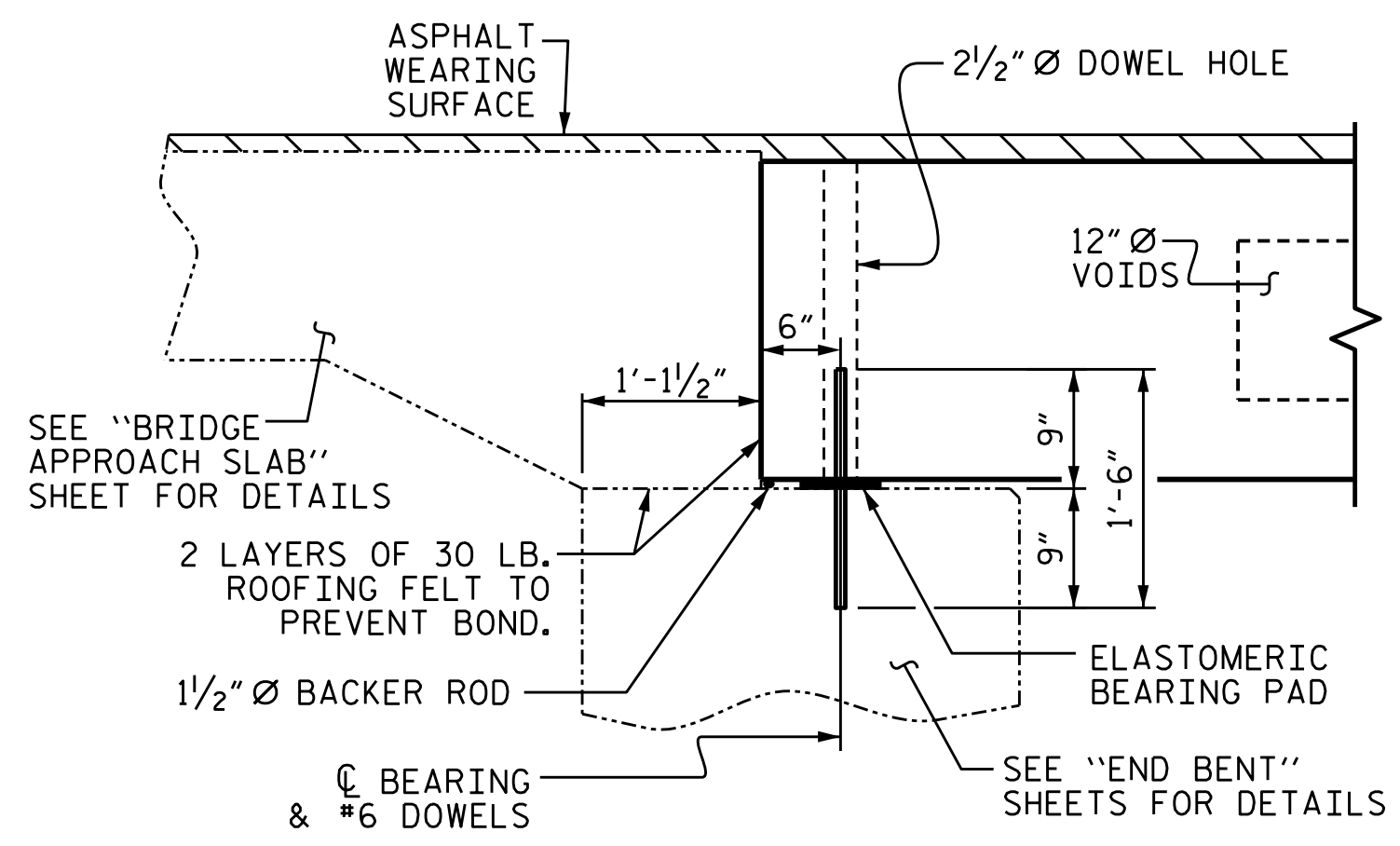
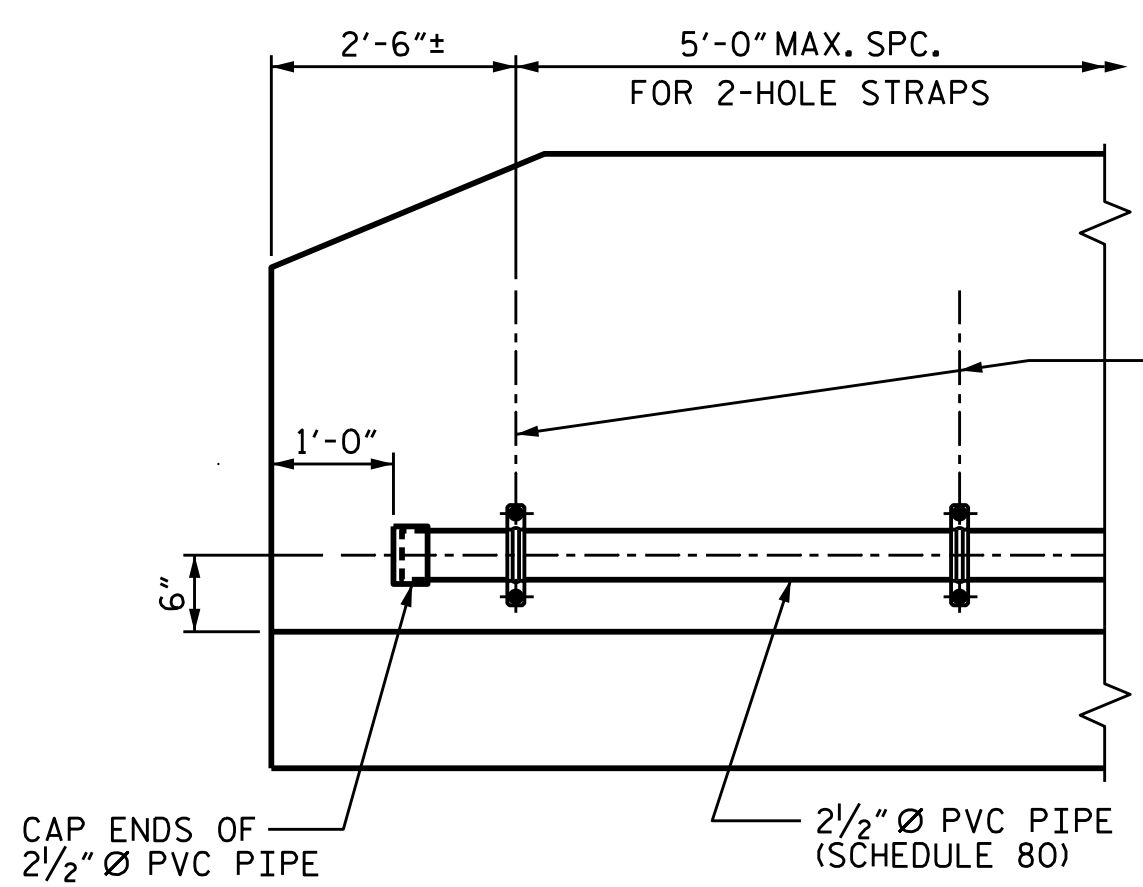


HALF SECTION AT INTERMEDIATE DIAPHRAGMS      **TYPICAL SECTION**      HALF SECTION THROUGH VOIDS

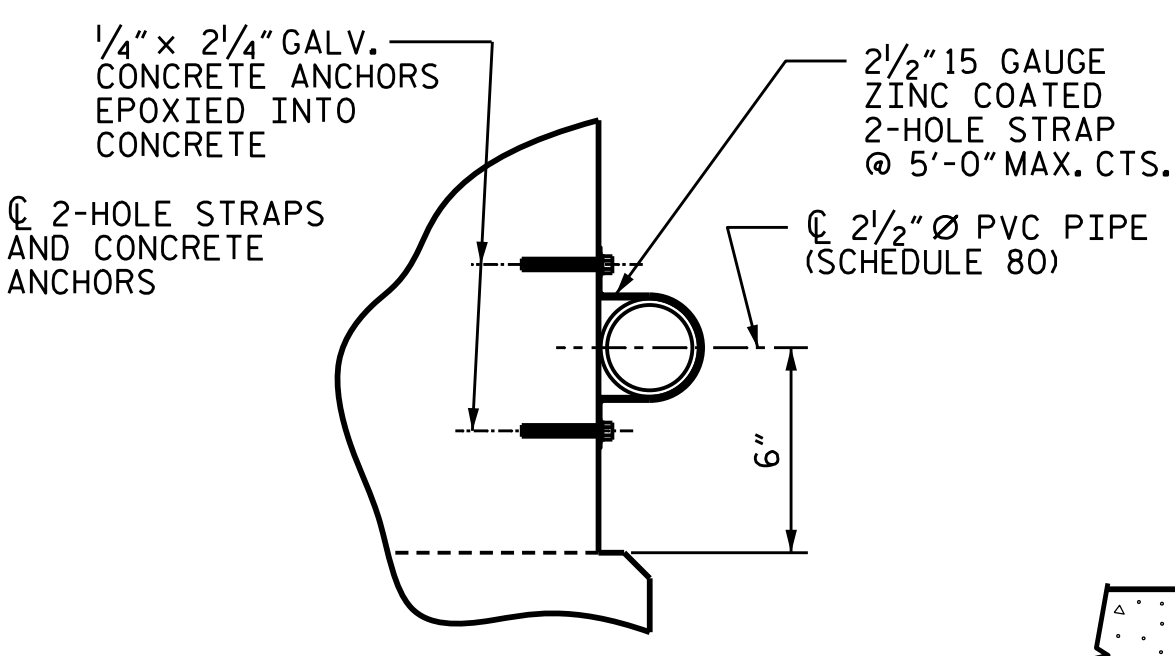
\* - THE MAXIMUM BARRIER RAIL HEIGHT AND ASPHALT THICKNESS IS SHOWN. THE HEIGHT OF THE BARRIER RAIL AND ASPHALT THICKNESS VARIES WHILE THE TOP OF THE BARRIER RAIL FOLLOWS THE PROFILE OF THE GUTTERLINE. FOR RAIL HEIGHT DETAILS AND ASPHALT THICKNESS, SEE THE "VERTICAL CONCRETE BARRIER RAIL SECTION" DETAIL.



**SECTION AT END BENT**



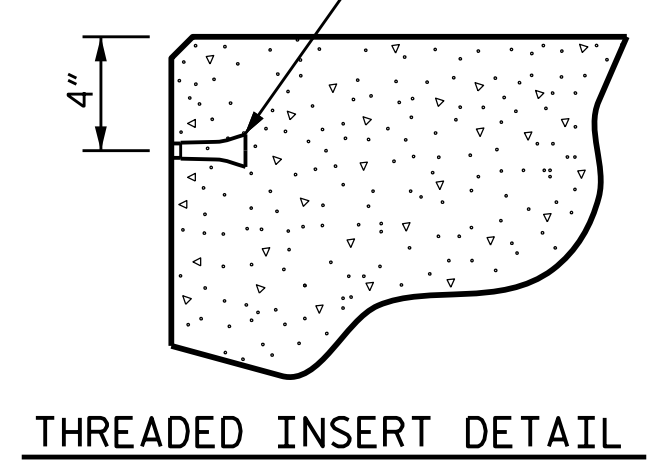
**ELEVATION**  
**FIBER OPTIC CONDUIT SYSTEM DETAILS**



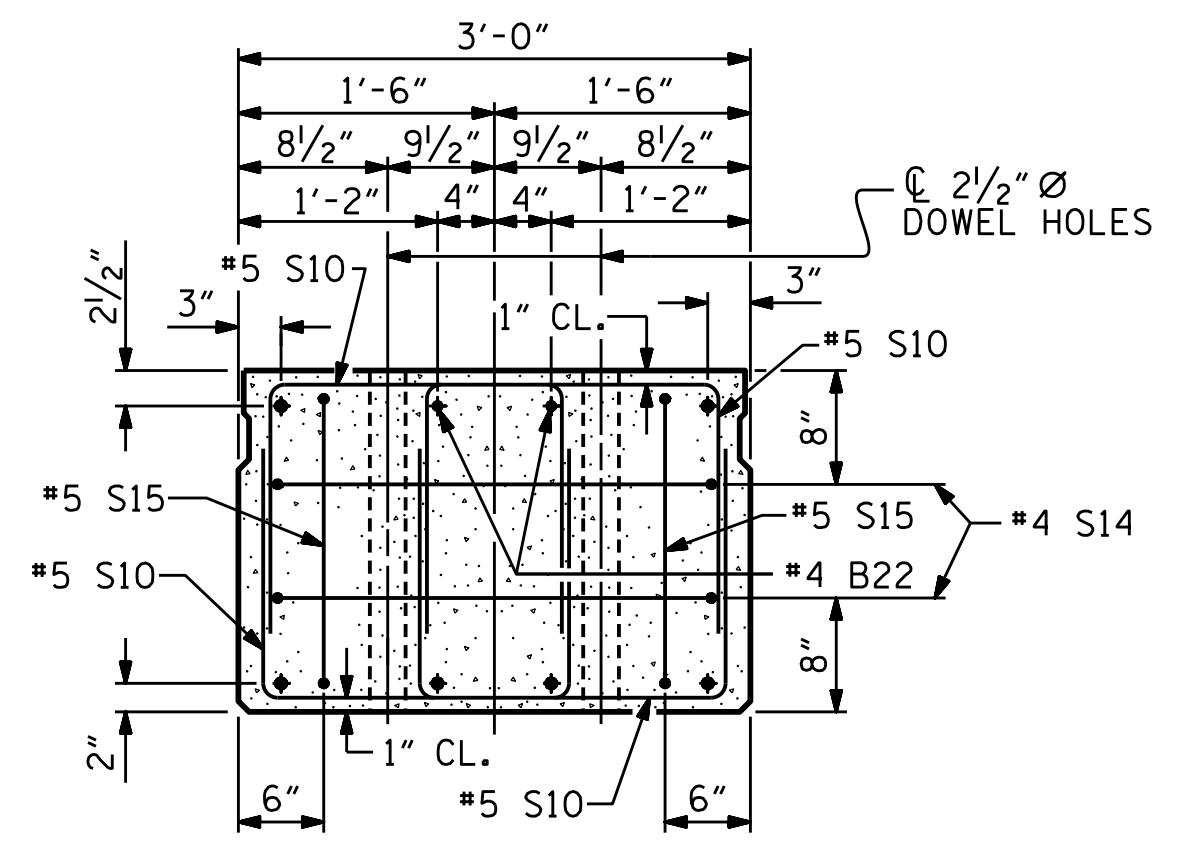
**SECTION**

2 1/2" Ø SCHEDULE 80 PVC PIPE ATTACHED TO THE BACK OF BOTH RAILS FOR FUTURE FIBER OPTIC CABLE.

PERMITTED THREADED INSERT CAST IN OUTSIDE FACE OF EXTERIOR UNIT AND RECESSED 3/8". SIZE TO BE DETERMINED BY CONTRACTOR.

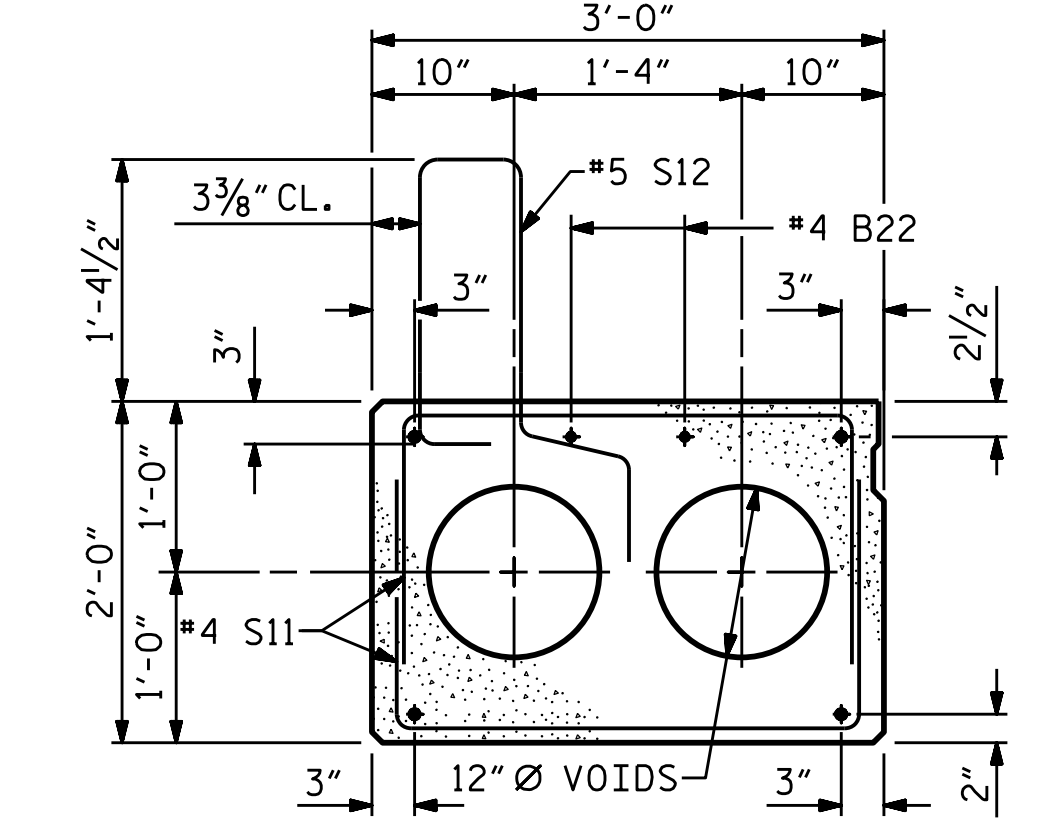


**THREADED INSERT DETAIL**



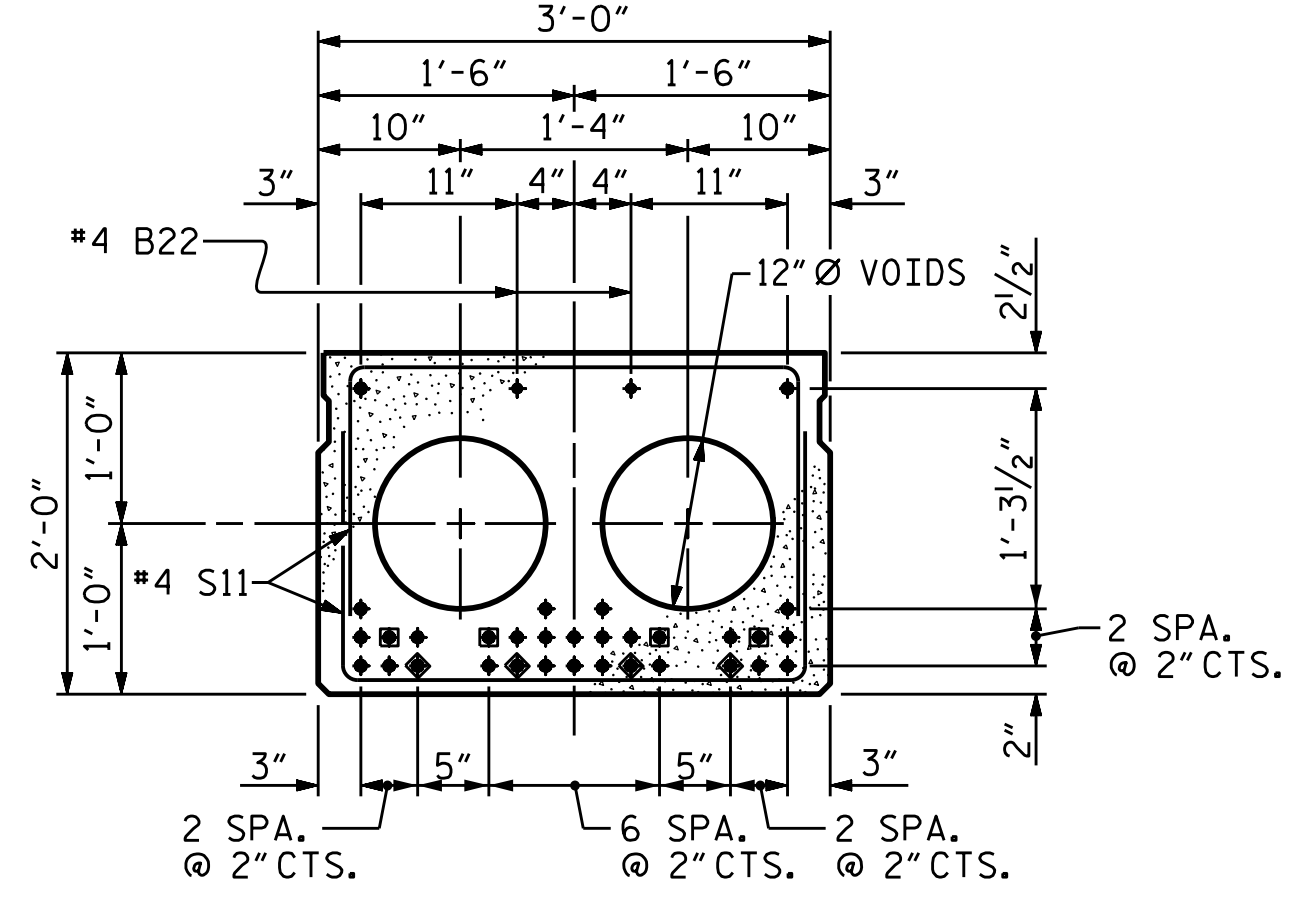
**END ELEVATION**

SHOWING PLACEMENT OF DOUBLE STIRRUPS AND LOCATION OF DOWEL HOLES. (STRAND LAYOUT NOT SHOWN). INTERIOR SLAB UNIT SHOWN-EXTERIOR SLAB UNIT SIMILAR EXCEPT SHEAR KEY LOCATION.



**EXTERIOR SLAB SECTION**

(FOR PRESTRESSED STRAND LAYOUT, SEE INTERIOR SLAB SECTION.)



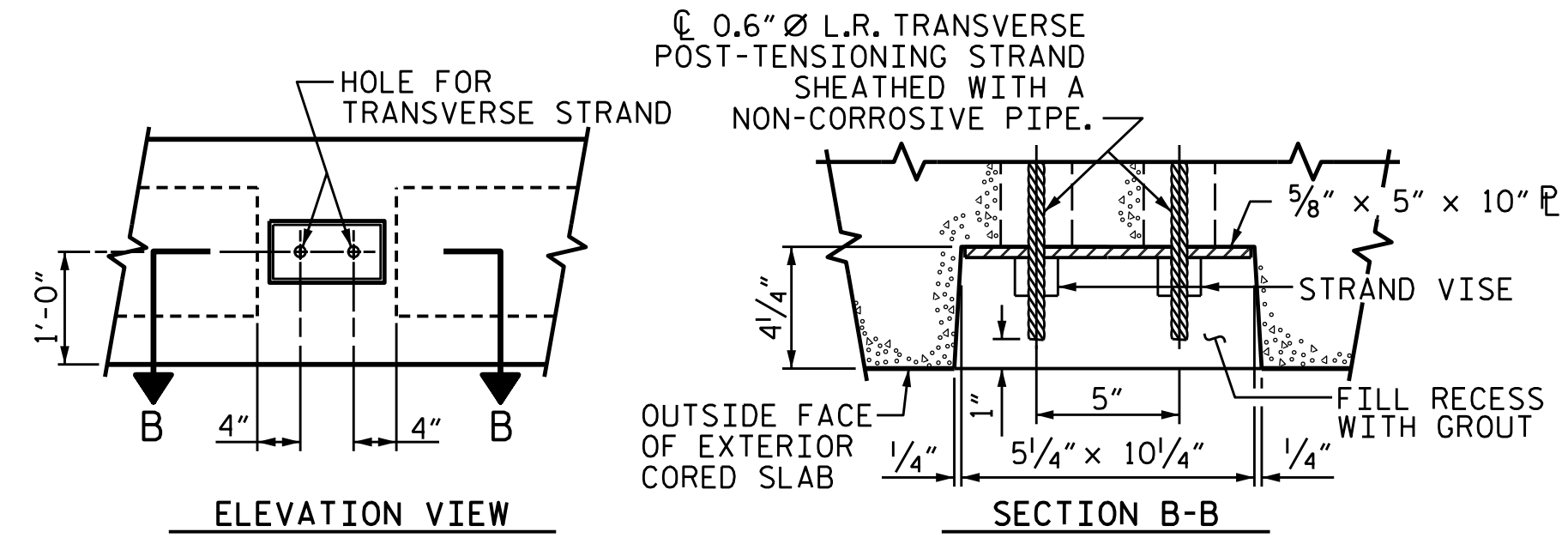
**INTERIOR SLAB SECTION**

(32 STRANDS REQUIRED)

**0.6" Ø LOW RELAXATION STRAND LAYOUT**

- ◆ BOND SHALL BE BROKEN ON THESE STRANDS FOR A DISTANCE OF 12'-0" FROM END OF CORED SLAB UNIT. SEE STANDARD SPECIFICATIONS, ARTICLE 1078-7.
- BOND SHALL BE BROKEN ON THESE STRANDS FOR A DISTANCE OF 10'-0" FROM END OF CORED SLAB UNIT. SEE STANDARD SPECIFICATIONS, ARTICLE 1078-7.

**DEBONDING LEGEND**



**ELEVATION VIEW**      **SECTION B-B**  
**GROUTED RECESS AT END OF POST-TENSIONED STRAND-CORED SLABS**

**SHEAR KEY DETAIL**

NOTE: OMIT SHEAR KEY ON OUTSIDE FACE OF EXTERIOR CORED SLABS.

PROJECT NO. BR-0108  
WILKES COUNTY  
STATION: 18+28.00 -L-

SHEET 1 OF 3



STATE OF NORTH CAROLINA  
DEPARTMENT OF TRANSPORTATION  
RALEIGH  
**3'-0" x 2'-0" PRESTRESSED CONCRETE CORED SLAB UNIT**

DRAWN BY :	J.M. KEPICH	DATE :	03/21
CHECKED BY :	L.M. SAMPLES	DATE :	04/21
DESIGN ENGINEER OF RECORD :	J.M. KEPICH	DATE :	05/21

**ms consultants, inc.**  
5444 Wade Park Blvd.  
Suite 160  
Raleigh, NC 27607  
NC License Number : C-3239

5/18/2021  
DOCUMENT NOT CONSIDERED FINAL UNLESS ALL SIGNATURES COMPLETED

REVISIONS						SHEET NO.
NO.	BY:	DATE:	NO.	BY:	DATE:	S-5
1			3			TOTAL SHEETS 14
2			4			