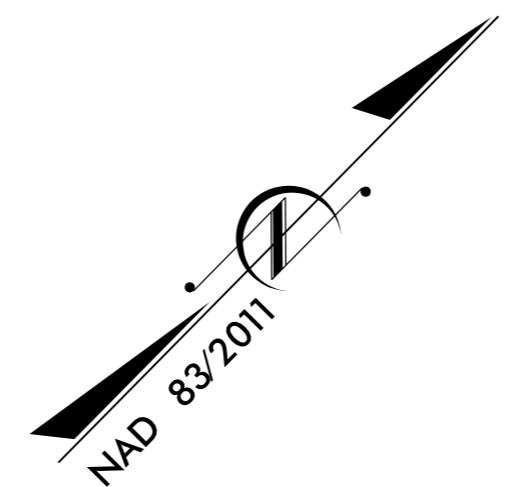


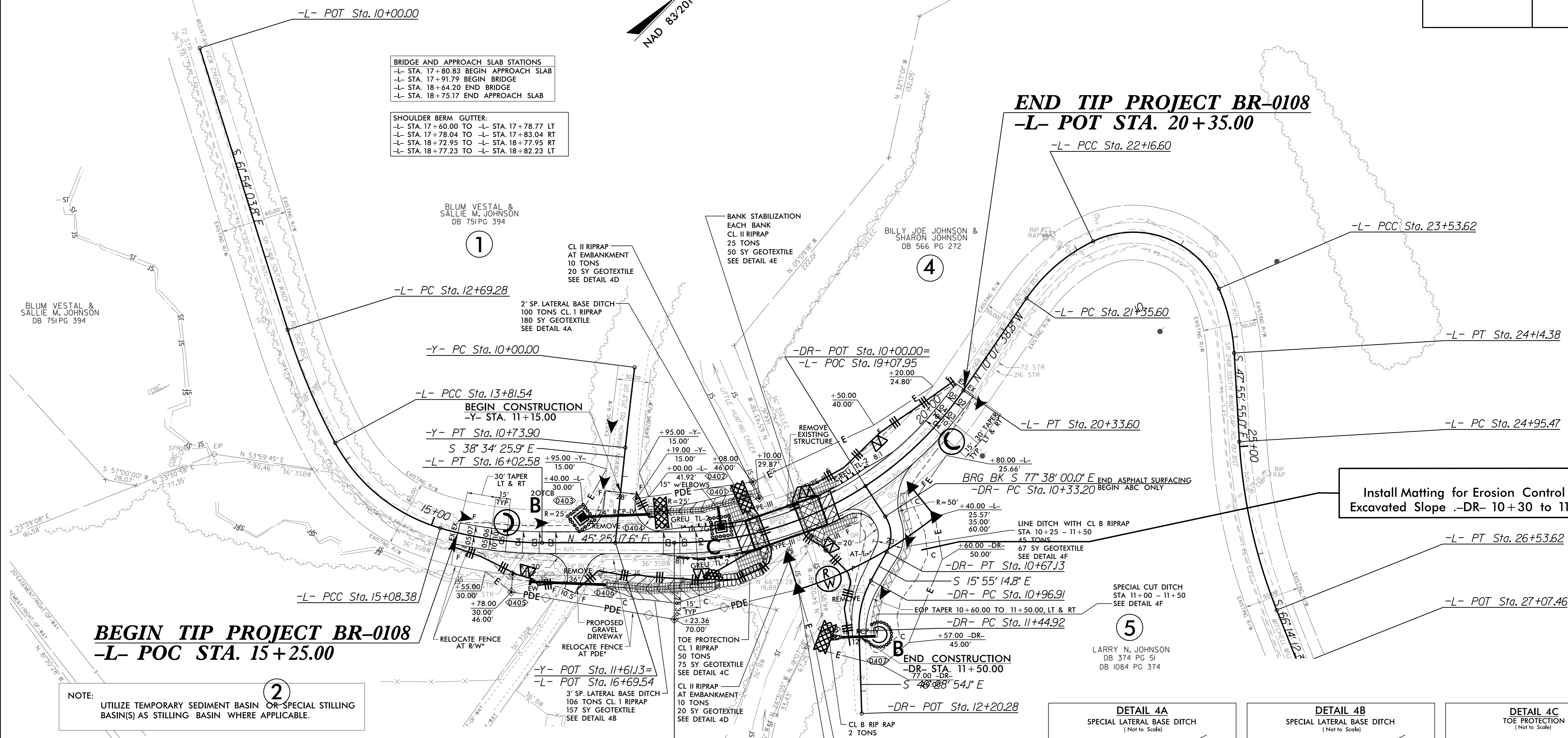
PROJECT REFERENCE NO.	SHEET NO.
BR-0108	EC-05/CONST.04
RW SHEET NO.	
ROADWAY DESIGN ENGINEER	HYDRAULICS ENGINEER



BRIDGE AND APPROACH SLAB STATIONS
 -L- STA. 17+80.83 BEGIN APPROACH SLAB
 -L- STA. 17+91.79 BEGIN BRIDGE
 -L- STA. 18+64.20 END BRIDGE
 -L- STA. 18+75.17 END APPROACH SLAB

SHOULDER BERM GUTTER:
 -L- STA. 17+60.00 TO -L- STA. 17+78.77 LT
 -L- STA. 17+78.04 TO -L- STA. 17+83.04 RT
 -L- STA. 18+72.95 TO -L- STA. 18+77.95 RT
 -L- STA. 18+77.23 TO -L- STA. 18+82.23 LT

END TIP PROJECT BR-0108
-L- POT STA. 20+35.00

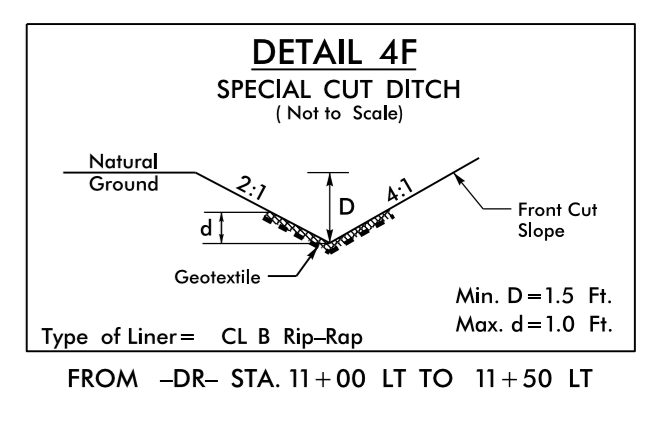
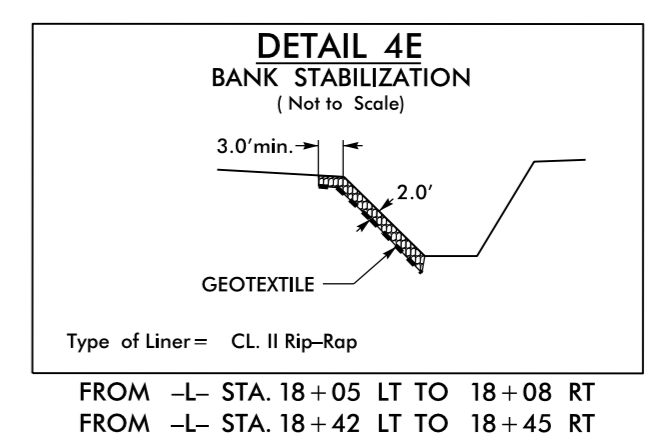
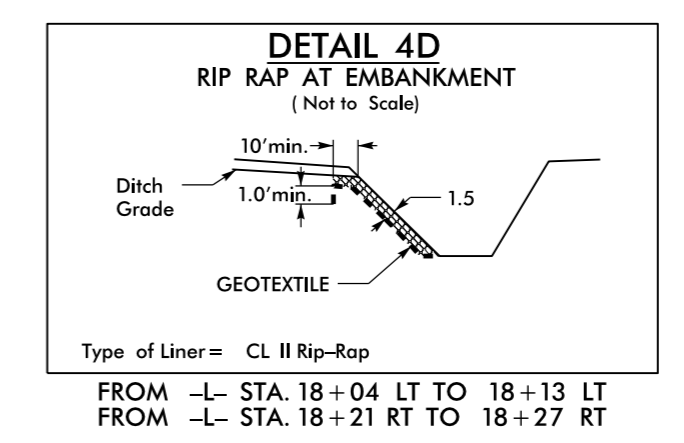
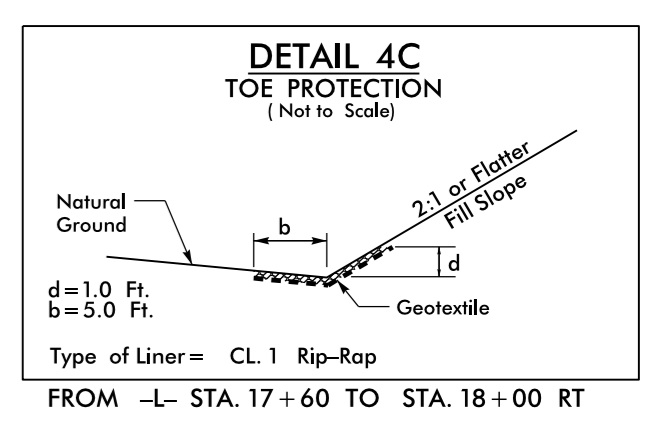
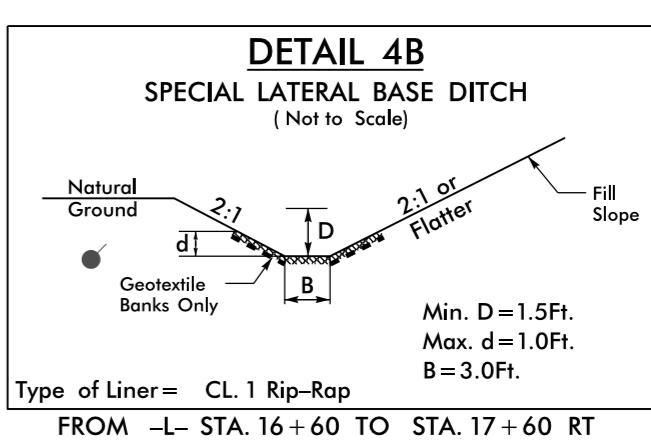
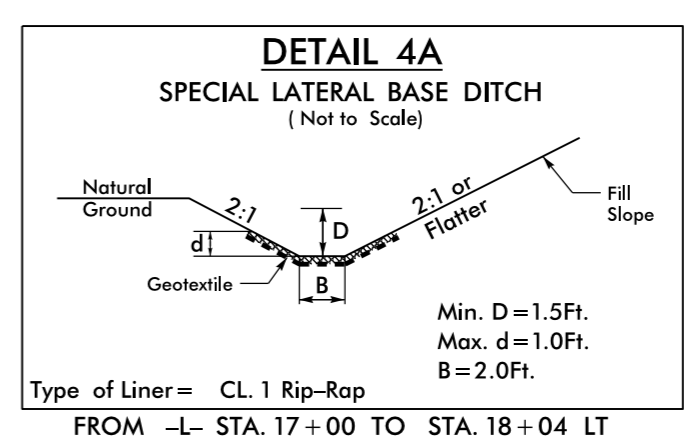


NOTE:
 UTILIZE TEMPORARY SEDIMENT BASIN OR SPECIAL STILLING BASIN(S) AS STILLING BASIN WHERE APPLICABLE.

-Y-	-DR-	-L-
PI Sta 10+36.95 $\Delta = 1' 09' 29.6" (LT)$ $D = 1' 34' 01.8"$ $L = 73.90'$ $T = 36.95'$ $R = 3,656.00'$	PI Sta 10+52.19 $\Delta = 61' 42' 45.2" (RT)$ $D = 18' 53' 28.9"$ $L = 33.93'$ $T = 18.82'$ $R = 31.50'$	PI Sta 11+21.67 $\Delta = 30' 33' 39.3" (LT)$ $D = 63' 39' 43.1"$ $L = 48.00'$ $T = 24.59'$ $R = 90.00'$

-L-	-L-	-L-	-L-	-L-	-L-	-L-	-L-
PI Sta 13+25.58 $\Delta = 10' 54' 04.4" (LT)$ $D = 9' 42' 40.1"$ $L = 112.25'$ $T = 56.30'$ $R = 590.00'$	PI Sta 14+48.50 $\Delta = 45' 25' 16.9" (LT)$ $D = 35' 48' 35.5"$ $L = 126.84'$ $T = 66.96'$ $R = 160.00'$	PI Sta 15+55.80 $\Delta = 16' 21' 17.2" (LT)$ $D = 17' 21' 44.5"$ $L = 94.20'$ $T = 47.42'$ $R = 330.00'$ SE = SEE PLANS RO = SEE PLANS DS = 30 MPH	PI Sta 18+91.89 $\Delta = 55' 32' 56.4" (LT)$ $D = 17' 54' 17.8"$ $L = 310.24'$ $T = 168.53'$ $R = 320.00'$ SE = 0.04 RO = 60' DS = 30 MPH	PI Sta 21+77.05 $\Delta = 29' 56' 36.5" (RT)$ $D = 36' 57' 54.1"$ $L = 81.00'$ $T = 41.45'$ $R = 155.00'$	PI Sta 23+05.18 $\Delta = 92' 21' 34.5" (RT)$ $D = 67' 24' 24.5"$ $L = 137.02'$ $T = 88.57'$ $R = 85.00'$	PI Sta 23+84.31 $\Delta = 19' 53' 32.6" (RT)$ $D = 32' 44' 25.6"$ $L = 60.76'$ $T = 30.69'$ $R = 175.00'$	PI Sta 25+75.23 $\Delta = 18' 18' 17.3" (LT)$ $D = 11' 34' 29.7"$ $L = 158.14'$ $T = 79.75'$ $R = 495.00'$

*RELOCATE FENCE AS INDICATED OR AS DIRECTED BY THE ENGINEER



SEE SHEET 5 FOR PROFILES
 FOR STRUCTURE PLANS, SEE SHEET S-1 THRU S-??

REVISIONS

8/17/99

3/12/02 02:34:37 PM P:\S105.dgn
 HISHER, ALLEGRA