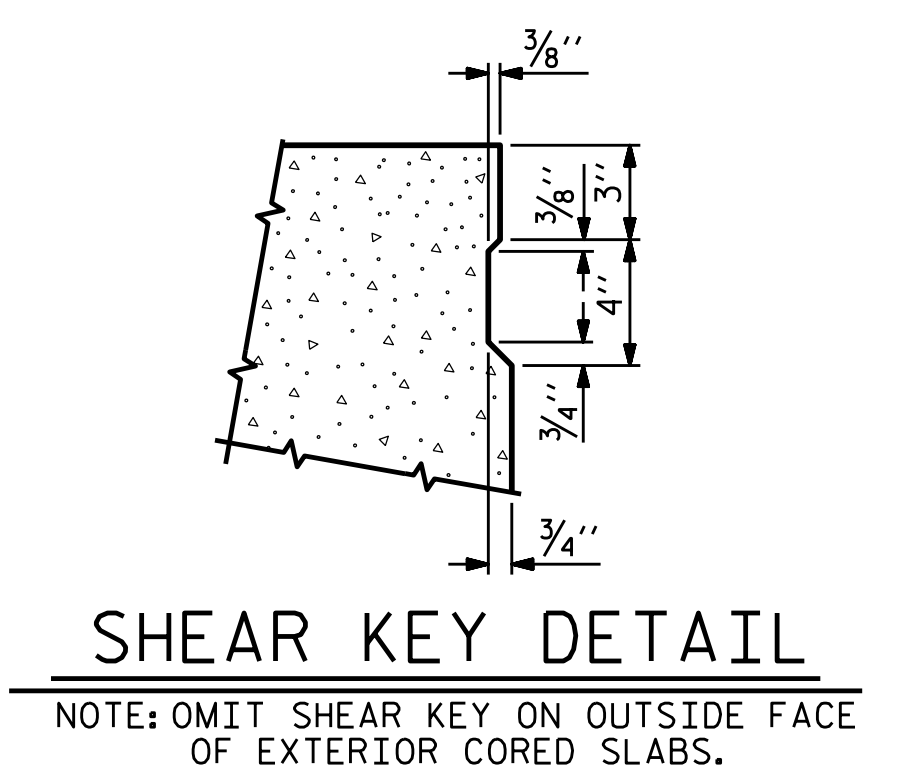
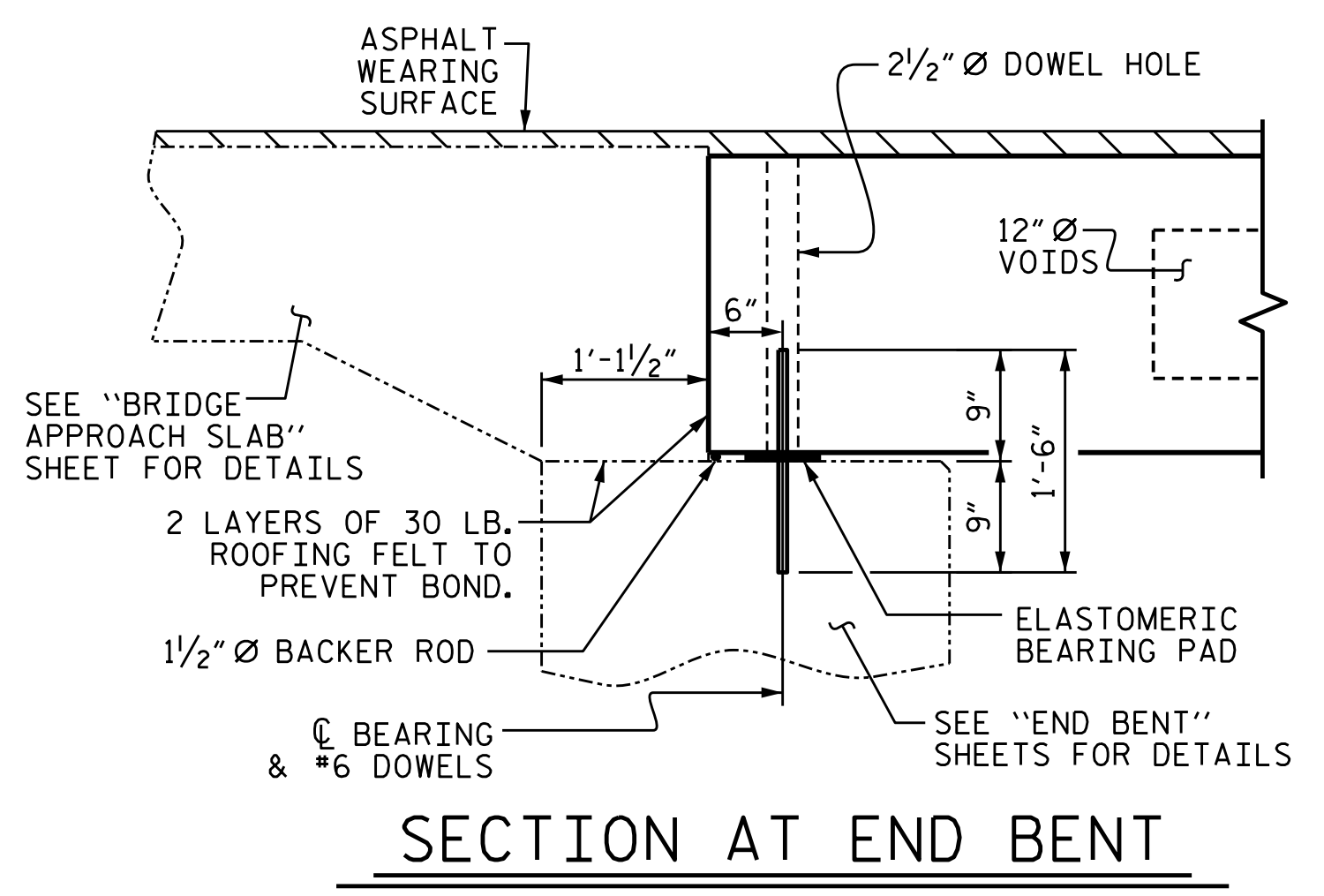
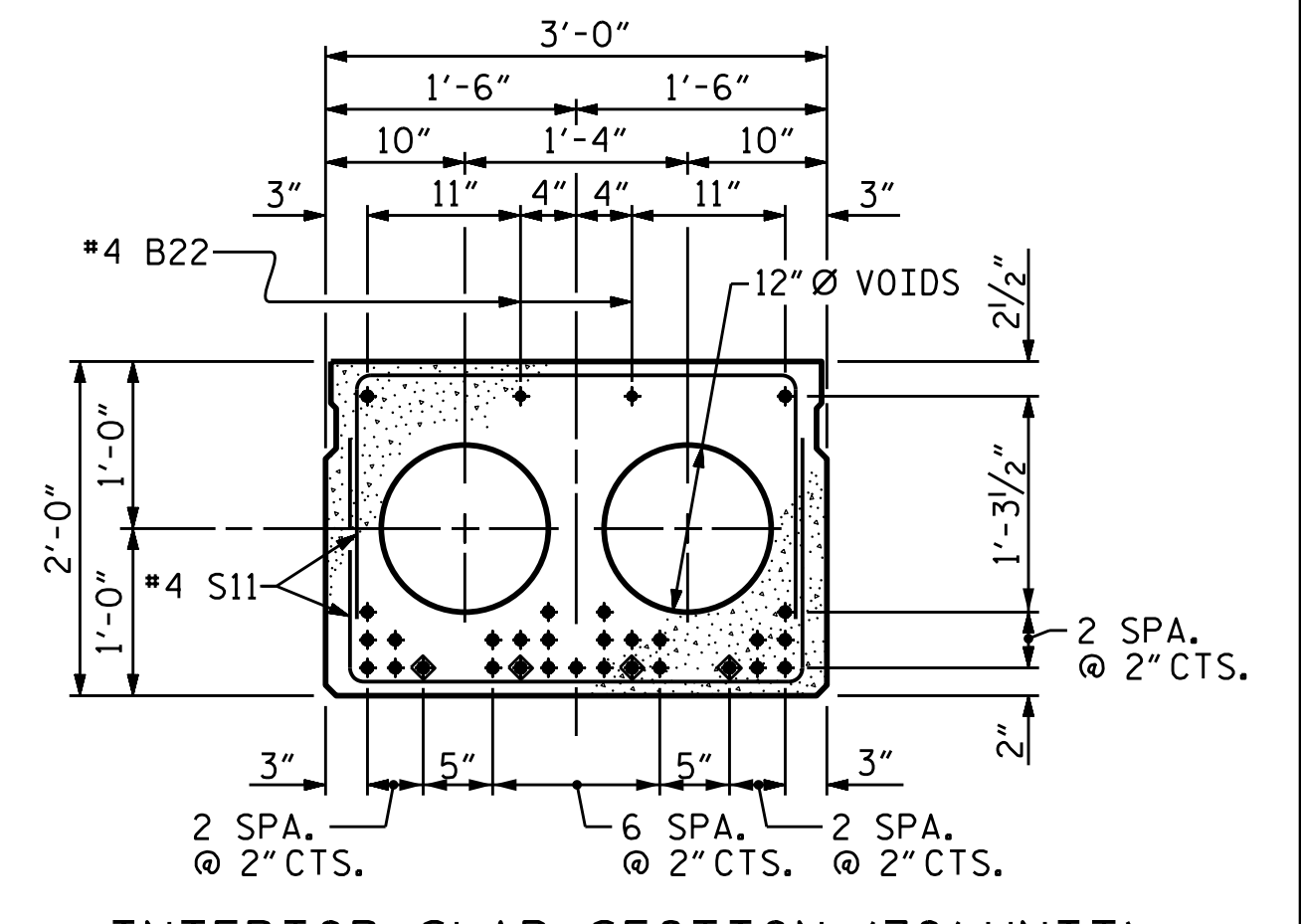
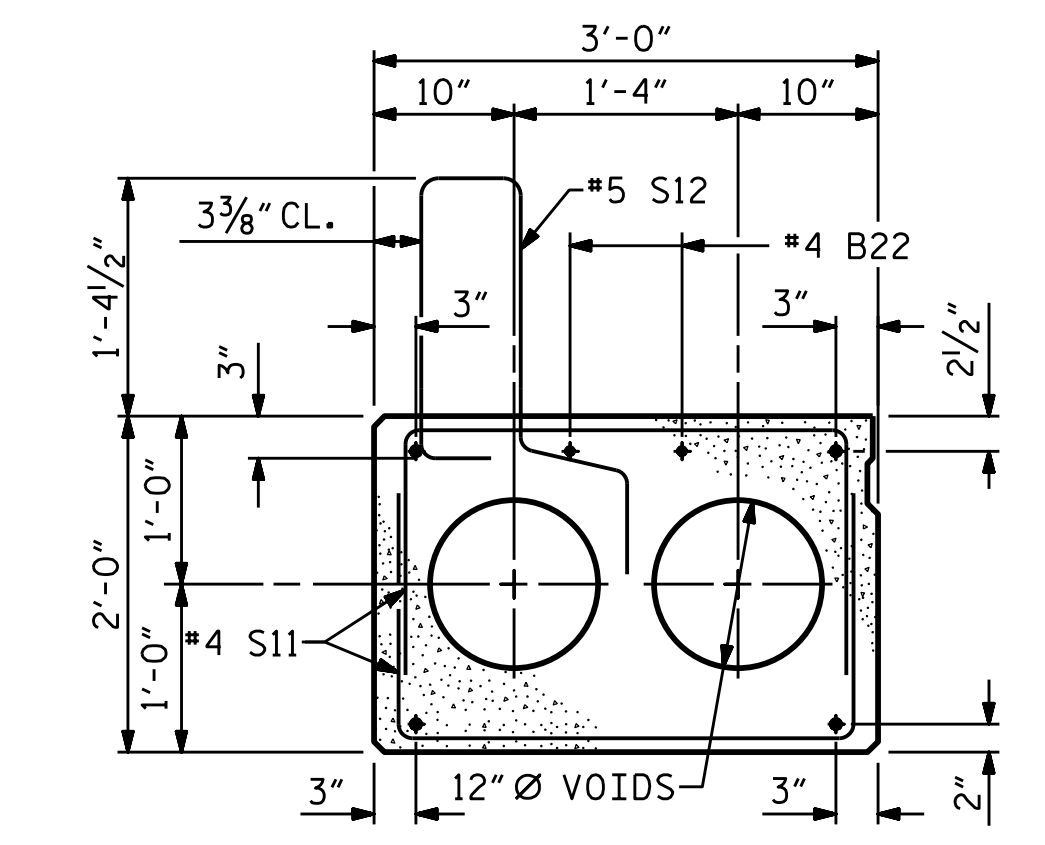


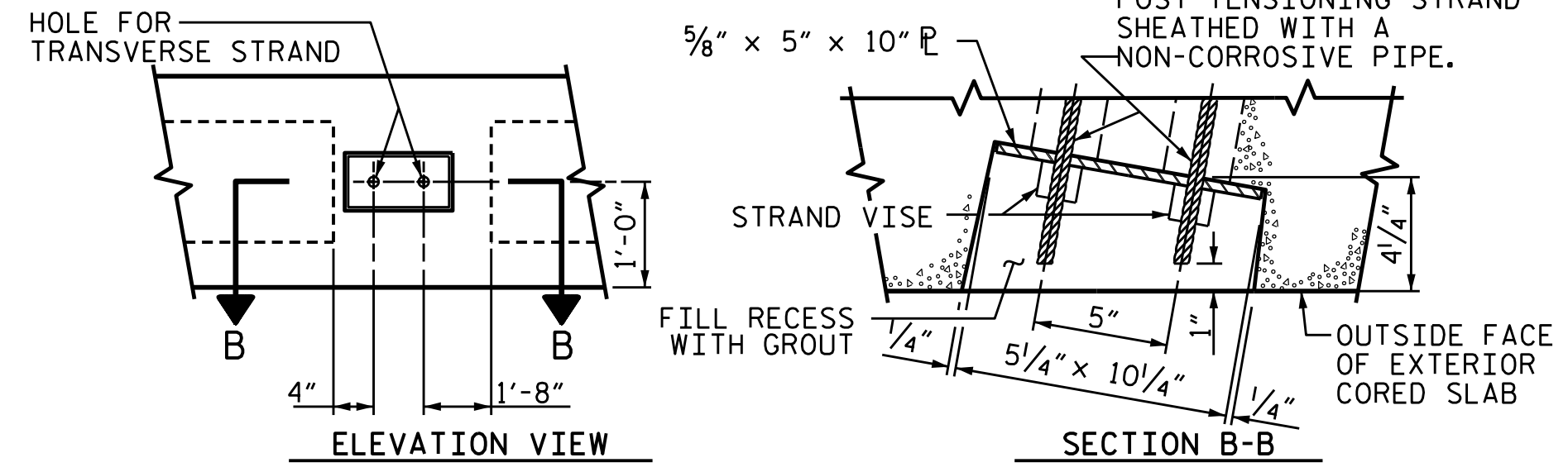
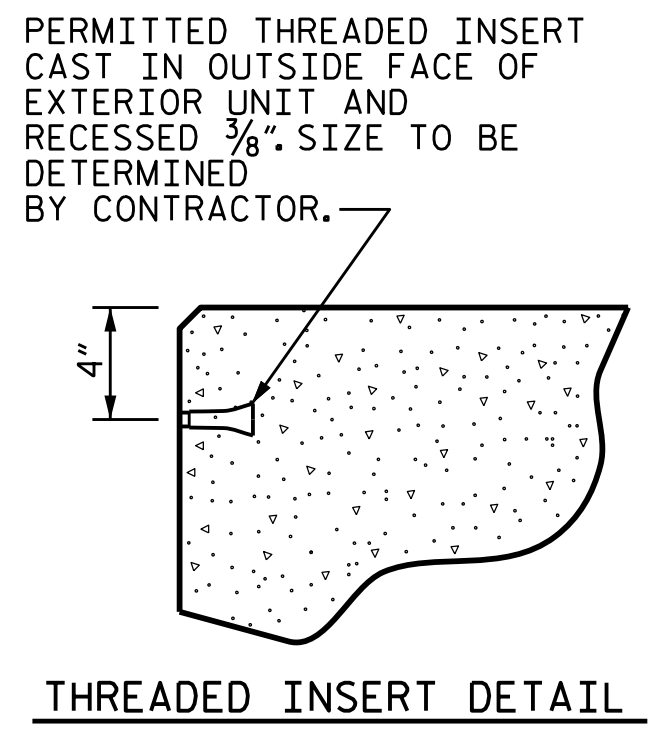
* - THE MAXIMUM BARRIER RAIL HEIGHT AND ASPHALT THICKNESS IS SHOWN. THE HEIGHT OF THE BARRIER RAIL AND ASPHALT THICKNESS VARIES WHILE THE TOP OF THE BARRIER RAIL FOLLOWS THE PROFILE OF THE GUTTERLINE. FOR RAIL HEIGHT DETAILS AND ASPHALT THICKNESS, SEE THE "VERTICAL CONCRETE BARRIER RAIL SECTION" DETAIL.



SHEAR KEY DETAIL
 NOTE: OMIT SHEAR KEY ON OUTSIDE FACE OF EXTERIOR CORED SLABS.



INTERIOR SLAB SECTION (70' UNIT)
 (29 STRANDS REQUIRED)
 0.6" Ø LOW RELAXATION STRAND LAYOUT

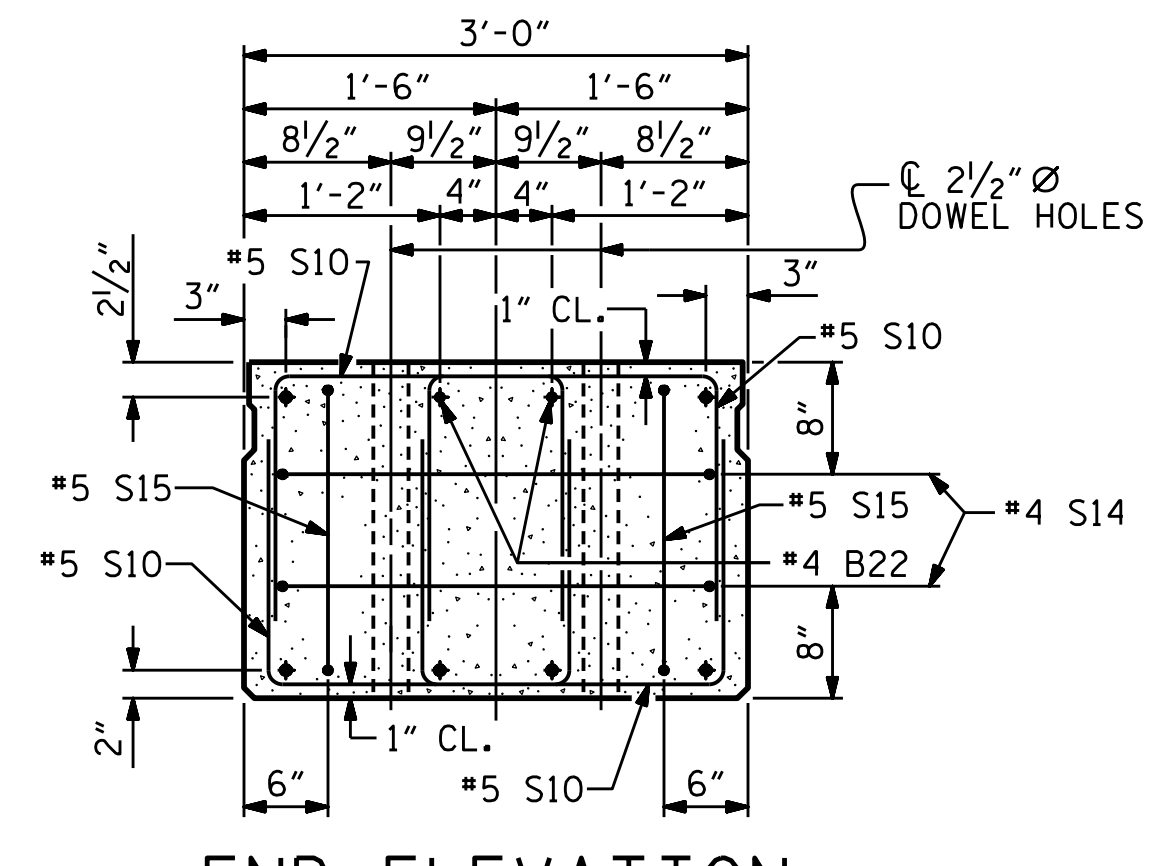


GRAUTED RECESS AT END OF POST-TENSIONED STRAND-CORED SLABS

EXTERIOR SLAB SECTION
 (FOR PRESTRESSED STRAND LAYOUT, SEE INTERIOR SLAB SECTION.)

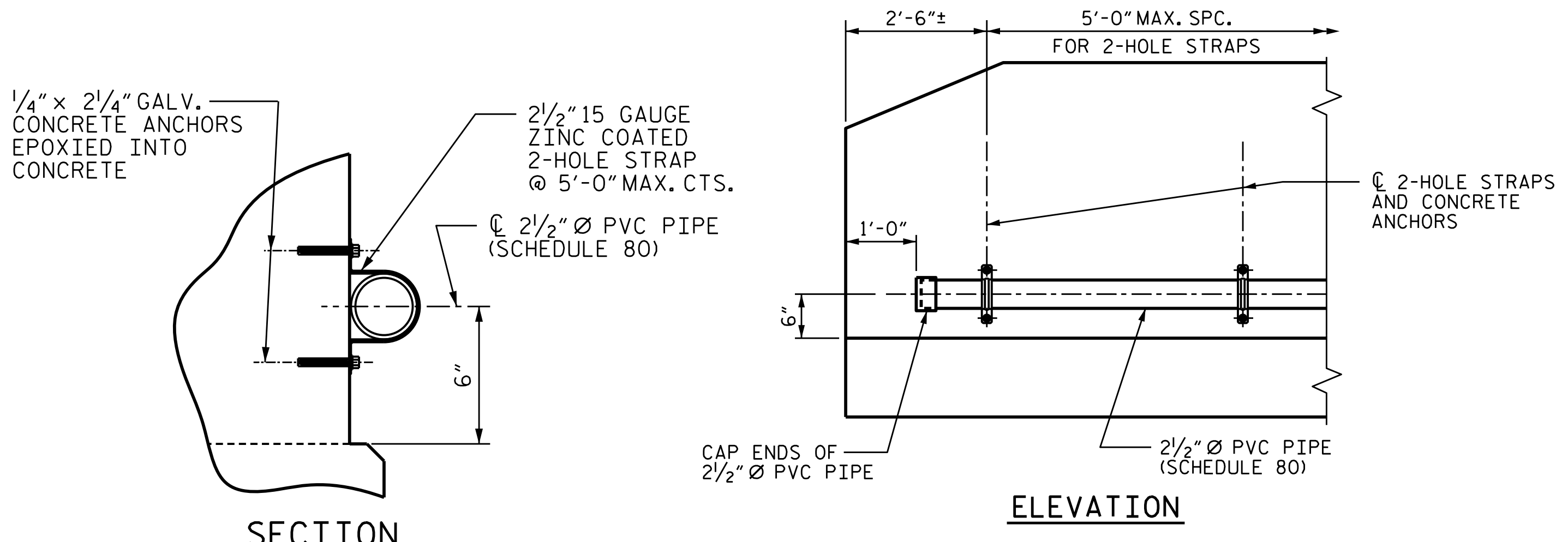
◆ BOND SHALL BE BROKEN ON THESE STRANDS FOR A DISTANCE OF 14'-0" FROM END OF CORED SLAB UNIT. SEE STANDARD SPECIFICATIONS, ARTICLE 1078-7.

DEBONDING LEGEND

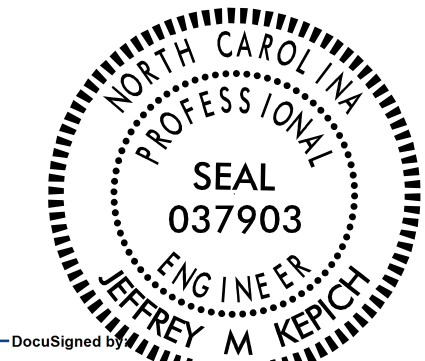


END ELEVATION
 SHOWING PLACEMENT OF DOUBLE STIRRUPS AND LOCATION OF DOWEL HOLES. (STRAND LAYOUT NOT SHOWN.) INTERIOR SLAB UNIT SHOWN-EXTERIOR SLAB UNIT SIMILAR EXCEPT SHEAR KEY LOCATION.

PROJECT NO. 17BP.11.R.153
 WILKES COUNTY
 STATION: 15+23.00 -L-
 SHEET 1 of 3



FIBER OPTIC CONDUIT SYSTEM DETAILS



ms consultants, inc.
 5444 Wade Park Blvd.
 Suite 160
 Raleigh, NC 27607
 NC License Number : C-3239

5/26/2021
 DOCUMENT NOT CONSIDERED FINAL UNLESS ALL SIGNATURES COMPLETED

| | | | | | |
|--|-----|------------------------------|-----|---------|-----------------|
| STATE OF NORTH CAROLINA | | DEPARTMENT OF TRANSPORTATION | | RALEIGH | |
| 3'-0" x 2'-0" PRESTRESSED CONCRETE CORED SLAB UNIT | | | | | |
| REVISIONS | | | | | |
| NO. | BY: | DATE: | NO. | BY: | DATE: |
| 1 | | | 3 | | |
| 2 | | | 4 | | |
| | | | | | SHEET NO. S-5 |
| | | | | | TOTAL SHEETS 16 |

DRAWN BY : J.M. KEPICH DATE : 03/21
 CHECKED BY : L.M. SAMPLES DATE : 05/21
 DESIGN ENGINEER OF RECORD : J.M. KEPICH DATE : 05/21