



## GENERAL NOTES

CHANGES MAY BE REQUIRED WHEN PHYSICAL DIMENSIONS IN THE DETAIL DRAWINGS, STANDARD DETAILS, AND ROADWAY DETAILS ARE NOT ATTAINABLE TO MEET FIELD CONDITIONS OR RESULT IN DUPLICATE OR UNDESIRABLE OVERLAPPING OF DEVICES. MODIFICATION MAY INCLUDE: MOVING, SUPPLEMENTING, COVERING, OR REMOVAL OF DEVICES AS DIRECTED BY THE ENGINEER.

THE FOLLOWING GENERAL NOTES APPLY AT ALL TIMES FOR THE DURATION OF THE CONSTRUCTION PROJECT EXCEPT WHEN OTHERWISE NOTED IN THE PLAN OR DIRECTED BY THE ENGINEER.

### TRAFFIC PATTERN ALTERATIONS

- A) NOTIFY THE ENGINEER THIRTY (30) CALENDAR DAYS PRIOR TO ANY TRAFFIC PATTERN ALTERATION.

### SIGNING

- B) INSTALL ADVANCE WORK ZONE WARNING SIGNS WHEN WORK IS WITHIN 40 FT FROM THE EDGE OF TRAVEL LANE AND NO MORE THAN THREE (3) DAYS PRIOR TO THE BEGINNING OF CONSTRUCTION.
- C) PROVIDE SIGNING AND DEVICES REQUIRED TO CLOSE THE ROAD ACCORDING TO THE ROADWAY STANDARD DRAWINGS AND TRAFFIC CONTROL PLANS.

PROVIDE SIGNING REQUIRED FOR THE OFF-SITE DETOUR ROUTE AS SHOWN IN THE TRAFFIC CONTROL PLANS.

- D) COVER OR REMOVE ALL SIGNS AND DEVICES REQUIRED TO CLOSE THE ROAD WHEN ROAD CLOSURE IS NOT IN OPERATION.

COVER OR REMOVE ALL SIGNS REQUIRED FOR THE OFF-SITE DETOUR WHEN THE DETOUR IS NOT IN OPERATION.

- E) ENSURE ALL NECESSARY SIGNING IS IN PLACE PRIOR TO ALTERING ANY TRAFFIC PATTERN.

### TRAFFIC CONTROL DEVICES

- F) PLACE TYPE III BARRICADES, WITH "ROAD CLOSED" SIGN R11-2 ATTACHED, OF SUFFICIENT LENGTH TO CLOSE ENTIRE ROADWAY.

### ADDITIONAL NOTES

- G) MAINTAIN TRAFFIC TO ALL RESIDENTS DURING LIFE OF PROJECT AND ALL PHASES OF CONSTRUCTION.

### LOCAL NOTES

- H) NORTHAMPTON COUNTY EMERGENCY SERVICES (252-534-6811) AND NORTHAMPTON COUNTY SCHOOLS (252-534-1371) SHALL BE NOTIFIED OF PROJECT ACTIVITIES AT LEAST ONE MONTH PRIOR TO BEGINNING CONSTRUCTION.

## PHASING NOTES

### STEP 1

PRIOR TO ANY CONSTRUCTION OPERATIONS, PLACE AND COVER OFFSITE DETOUR SIGNS FOR NCHS EAST RD. (SR 1505), ZION CHURCH RD. (SR 1500), FIRE TOWER ROAD (SR 1500), W MAIN ST. (US 158) AS SHOWN ON THE MAP TO THE LEFT.

### STEP 2

USING OFFSITE DETOUR, AS SHOWN ON THE MAP TO THE LEFT, UNCOVER DETOUR SIGNS, CLOSE STRUCTURE 650015 (SR 1500 / NCHS EAST RD) TO TRAFFIC AND CONSTRUCT PROPOSED BRIDGE AND ROADWAY INCLUDING THE FINAL LAYER OF SURFACE COURSE PER ROADWAY AND BRIDGE PLANS.

### STEP 3

UPON COMPLETION OF BRIDGE AND ROADWAY CONSTRUCTION, REMOVE ALL SIGNS AND DEVICES, AND OPEN STRUCTURE 650015 (SR 1500 / NCHS EAST RD) TO TRAFFIC.

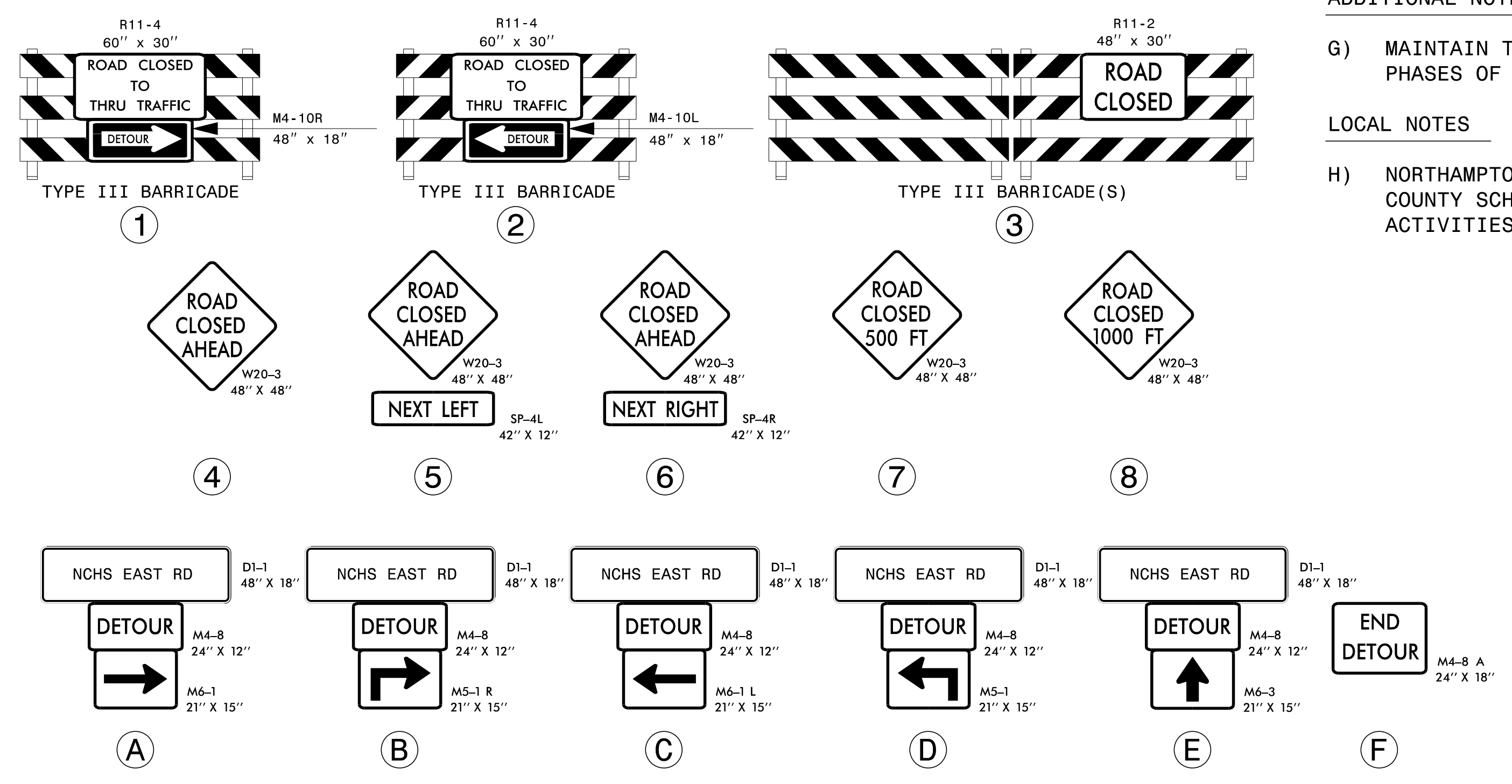
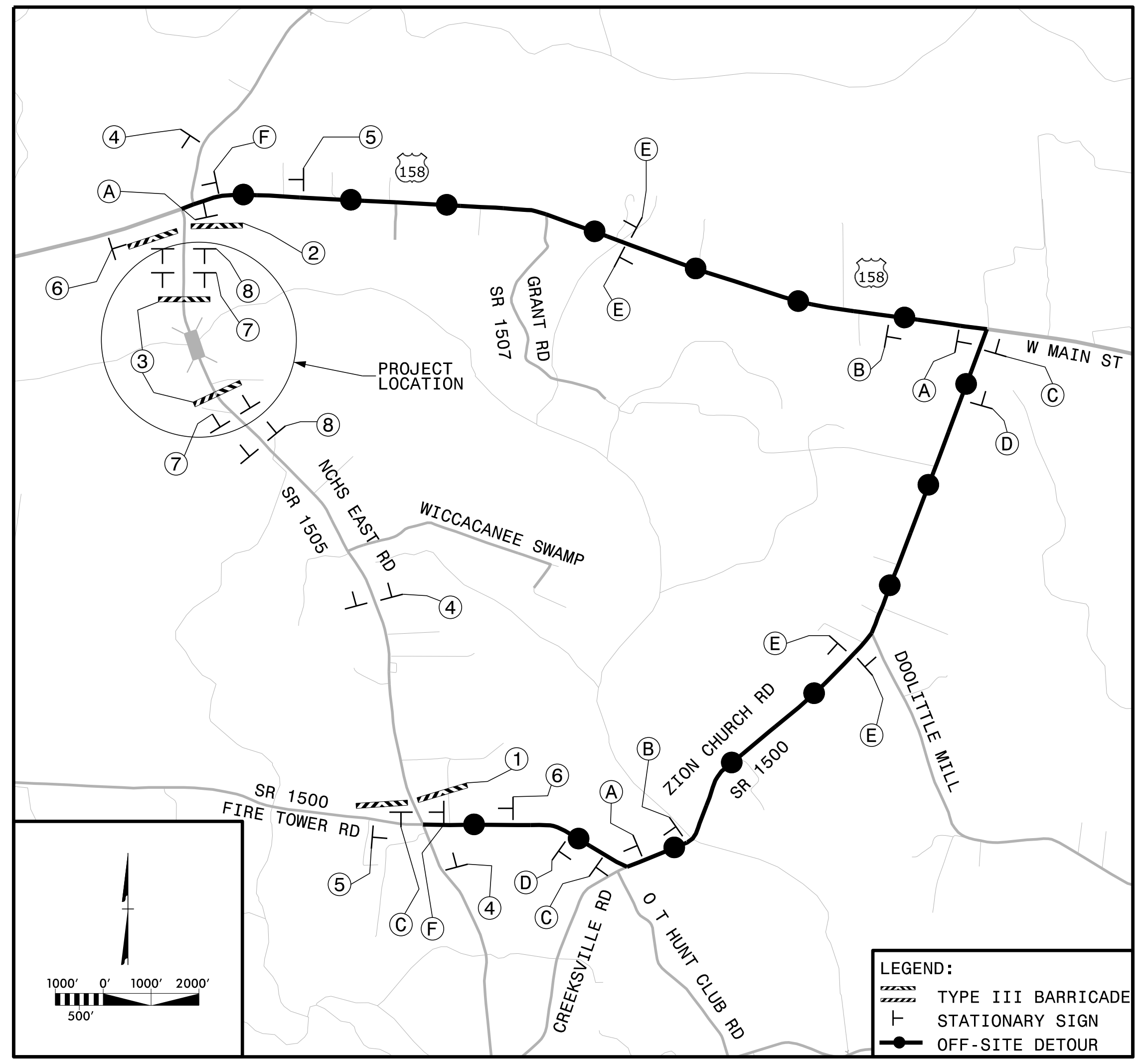
### NOTES:

TRAFFIC CONTROL DEVICES ① THRU ⑧ AND ① A THRU ① F SHALL BE INSTALLED PER ENGINEER'S INSTRUCTIONS.

### DETOUR DESCRIPTION:

**NORTHBOUND**  
FIRE TOWER ROAD (SR 1500) TO ZION CHURCH RD (SR 1500) TO W MAIN ST (US 158)

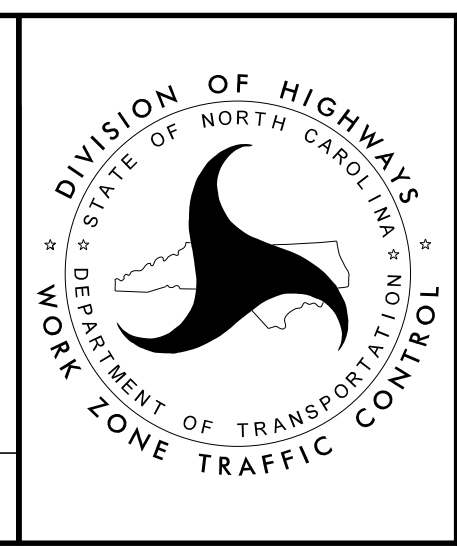
**SOUTHBOUND**  
W MAIN ST (US 158) TO ZION CHURCH RD (SR 1500) TO FIRE TOWER ROAD (SR 1500)



APPROVED: \_\_\_\_\_  
DATE: 3/11/2021

DocuSigned by:  
*Jacob Duke*  
29330C8654E9409...

**DOCUMENT NOT CONSIDERED FINAL UNLESS ALL SIGNATURES COMPLETED**



**OFFSITE DETOUR,  
GENERAL NOTES  
AND  
PHASING NOTES**

3/2/2020 17BP.1.R.90.TC\_TMP\_Detour.dgn User:jduke