

8/17/19

-L-  
 PI Sta 12+28.40 Δ = 2°12'01.5" (RT) D = 0°36'32.0" L = 361.39' T = 180.71' R = 9,410.00' SE = NC RO = 55  
 PI Sta 20+17.84 Δ = 5°44'35.5" (RT) D = 3°30'00.0" L = 164.09' T = 82.11' R = 1,637.02' SE = MATCH EXIST. RO = 132

PARCEL ROW INDEX TABLE									
PARCEL No.	SHEET No.	PROPERTY OWNER NAME	TCE AREA (SF)	TCE AREA (AC)	PUE AREA (SF)	PUE AREA (AC)	DUE AREA (SF)	DUE AREA (AC)	
1	4	PHILLIP ELLIOT RICKS			3085	0.071	826	0.019	3/12/2021
2	4	EVERETTE V DAVIS	2024	0.046	6245	0.143	866	0.020	3/12/2021
3	4	EDWARD J KROGULSKI JR ET AL	858	0.020			3613	0.083	

PROJECT REFERENCE NO. 17BP.J.R.90 SHEET NO. 4A

RW SHEET NO.

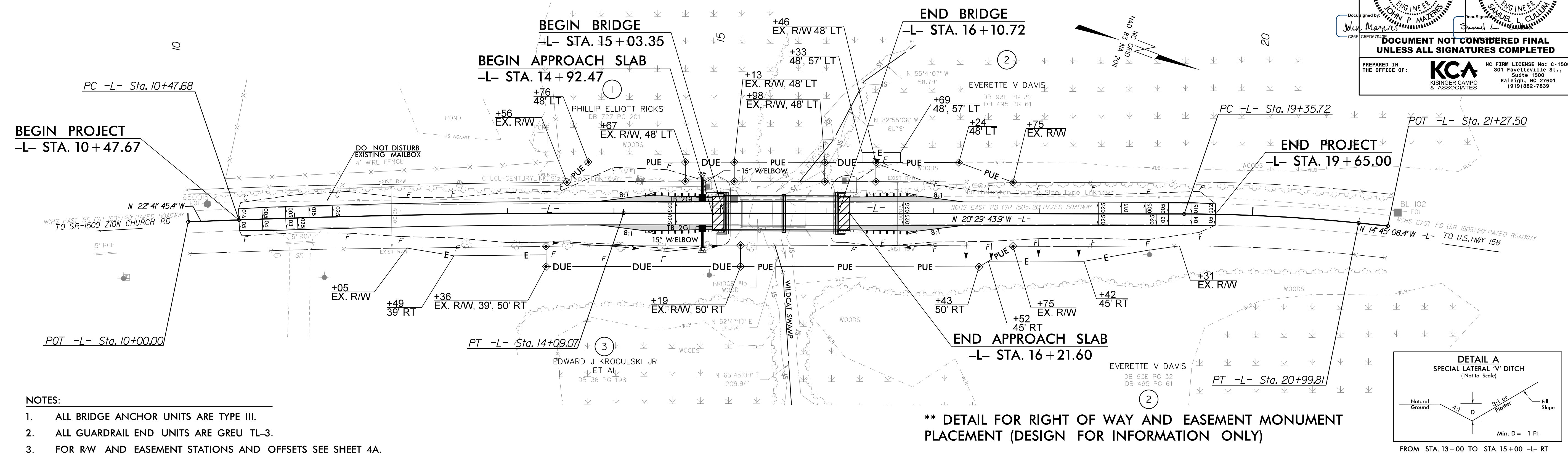
ROADWAY DESIGN ENGINEER  
 JOHN P. MAJERS  
 SEAL 043935  
 3/12/2021

HYDRAULICS ENGINEER  
 SAMUEL L. CULLUM  
 SEAL 043571  
 3/12/2021

DESIGNED BY: John Majers  
 CHECKED BY: Samuel L. Cullum

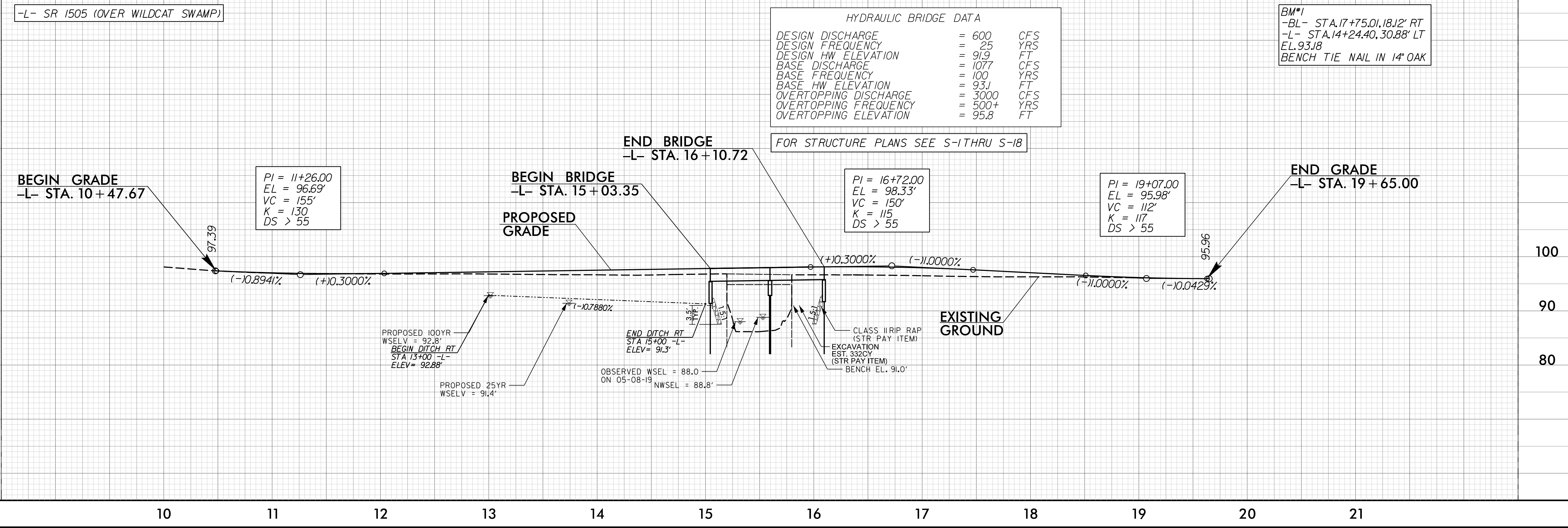
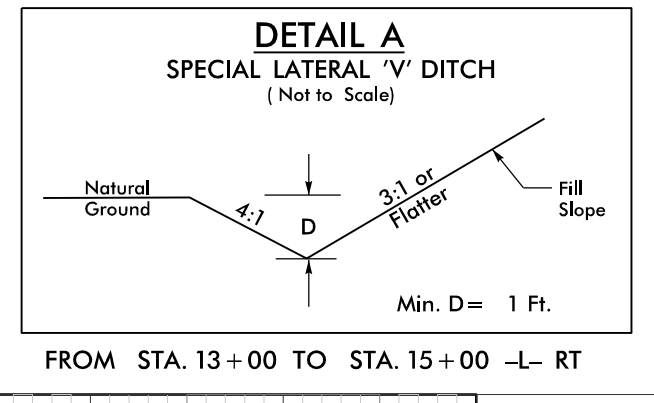
**DOCUMENT NOT CONSIDERED FINAL UNLESS ALL SIGNATURES COMPLETED**

PREPARED IN THE OFFICE OF: **KCA**  
 KISINGER CAMPO & ASSOCIATES  
 NC FIRM LICENSE NO. C-1508  
 301 Fayetteville St., Suite 1500  
 Raleigh, NC 27601 (919)862-7839



- NOTES:
- ALL BRIDGE ANCHOR UNITS ARE TYPE III.
  - ALL GUARDRAIL END UNITS ARE GREU TL-3.
  - FOR R/W AND EASEMENT STATIONS AND OFFSETS SEE SHEET 4A.

**\*\* DETAIL FOR RIGHT OF WAY AND EASEMENT MONUMENT PLACEMENT (DESIGN FOR INFORMATION ONLY)**



REVISIONS

03-MAR-2020 15:57  
 17BP.J.R.90.RdL.psh1.dgn  
 ide@kca.com