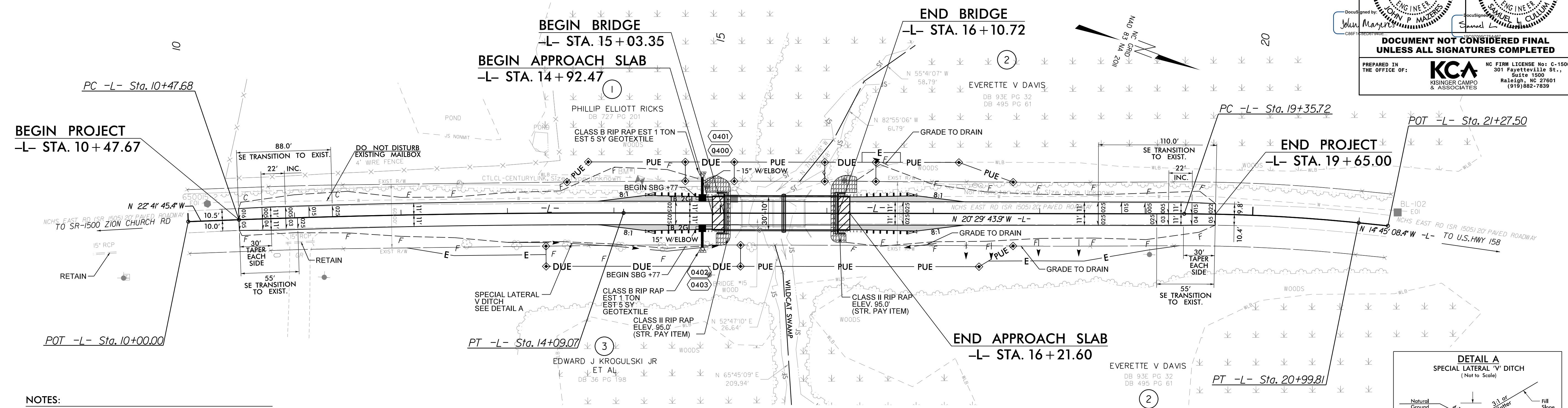


8/17/19

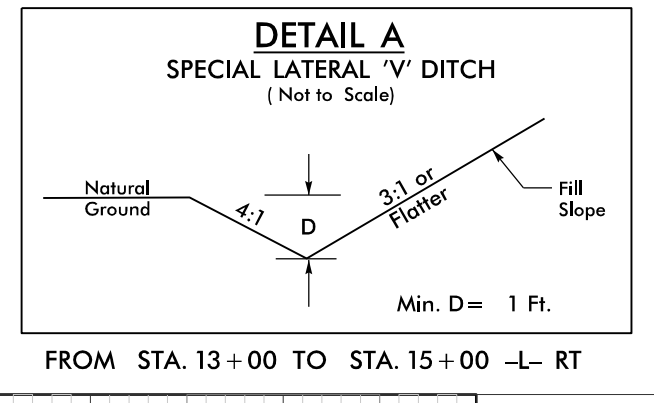
-L-

PI Sta 12+28.40	PI Sta 20+17.84
$\Delta = 2^{\circ}12'01.5''$ (RT)	$\Delta = 5^{\circ}44'35.5''$ (RT)
D = 0' 36' 32.0"	D = 3' 30' 00.0"
L = 361.39'	L = 164.09'
T = 180.71'	T = 82.11'
R = 9,410.00'	R = 1,637.02'
SE = NC	SE = MATCH EXIST.
RO = 55	RO = 132

PROJECT REFERENCE NO. 17BP.J.R.90	SHEET NO. 4
R/W SHEET NO.	
ROADWAY DESIGN ENGINEER	HYDRAULICS ENGINEER
3/12/2021	3/12/2021
DOCUMENT NOT CONSIDERED FINAL UNLESS ALL SIGNATURES COMPLETED	
PREPARED IN THE OFFICE OF:  NC FIRM LICENSE No. C-1508 301 Fayetteville St., Suite 1500 Raleigh, NC 27601 (919)882-7839	



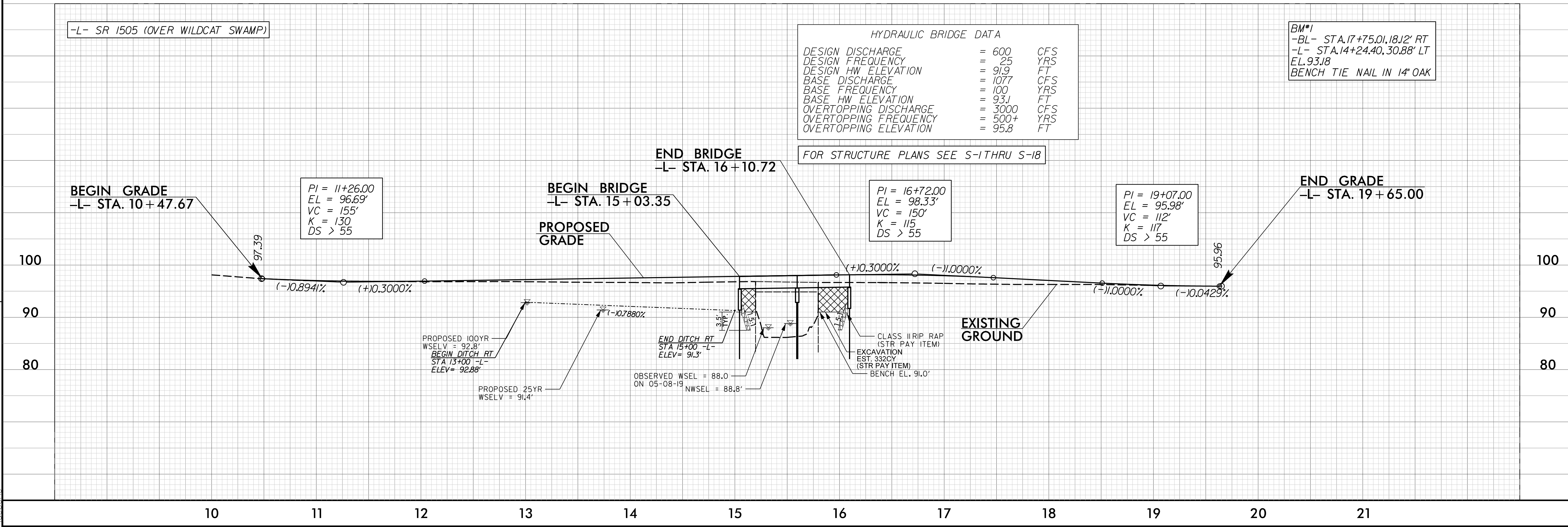
- NOTES:**
- ALL BRIDGE ANCHOR UNITS ARE TYPE III.
  - ALL GUARDRAIL END UNITS ARE GREU TL-3.
  - FOR R/W AND EASEMENT STATIONS AND OFFSETS SEE SHEET 4A.



**HYDRAULIC BRIDGE DATA**

DESIGN DISCHARGE	= 600	CFS
DESIGN FREQUENCY	= 25	YRS
DESIGN HW ELEVATION	= 91.9	FT
BASE DISCHARGE	= 1077	CFS
BASE FREQUENCY	= 100	YRS
BASE HW ELEVATION	= 93.1	FT
OVERTOPPING DISCHARGE	= 3000	CFS
OVERTOPPING FREQUENCY	= 500+	YRS
OVERTOPPING ELEVATION	= 95.8	FT

**BM#1**  
-BL- STA.17+75.01, 18.12' RT  
-L- STA.14+24.40, 30.88' LT  
EL.93.18  
BENCH TIE NAIL IN 1" OAK



REVISIONS

03-MAR-2020 15:57  
17BP.J.R. 301.P.dwg  
ide@kca.com