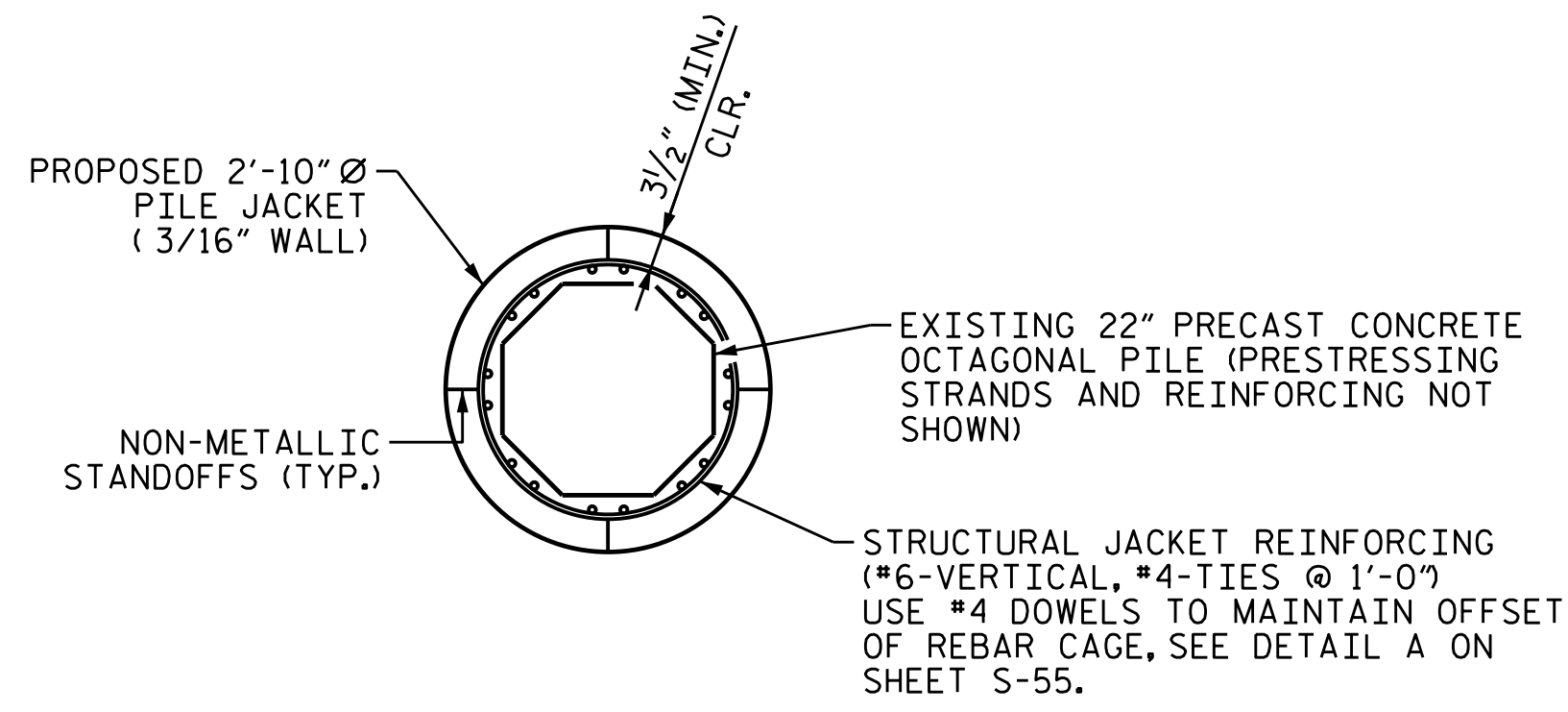
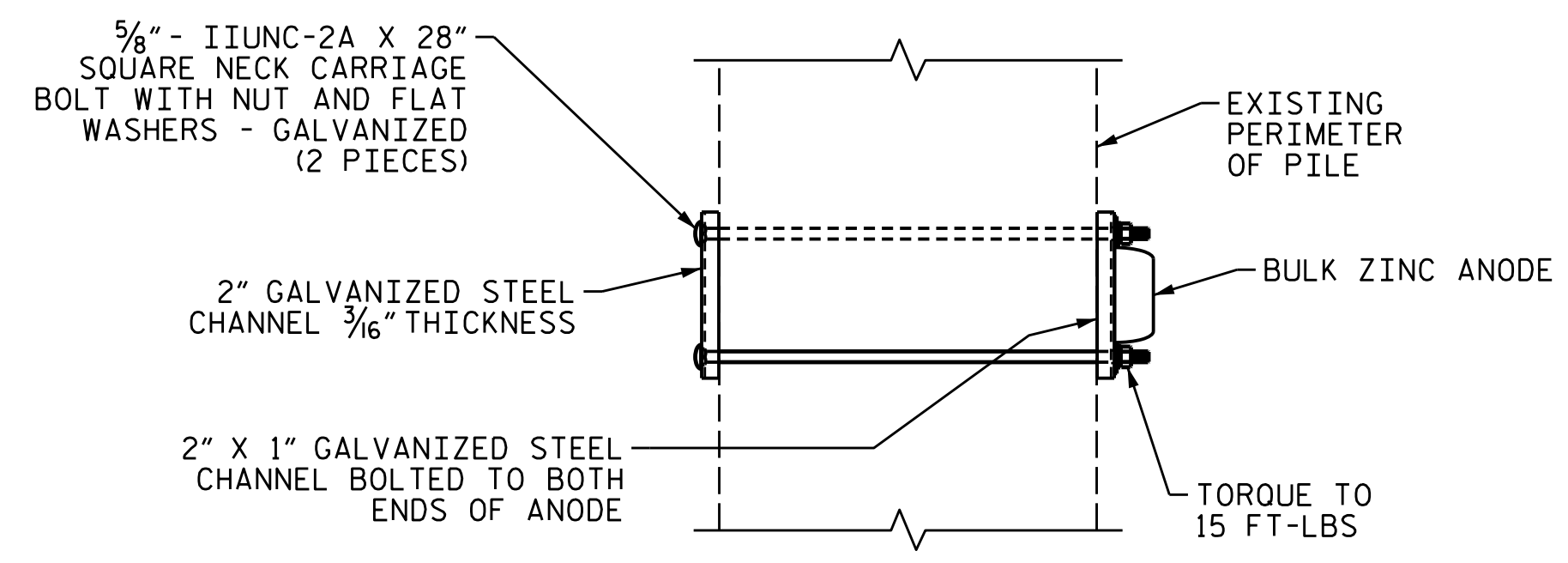


TYPICAL CATHODIC PILE JACKET
ELEVATION



SECTION B-B
TYPICAL STRUCTURAL JACKET, NON-STRUCTURAL SIMILAR



VIEW A-A

PILE JACKET NOTES

PROVIDE A PUMPING PORT WITHIN 4" OF THE PILE JACKET BOTTOM OR GROUND LINE TO APPLY FILLER. IF ADDITIONAL PUMPING PORTS ARE REQUIRED TO ENSURE PROPER FILLING, THEY SHALL BE LOCATED ABOVE THE BOTTOM PORT HOLE, STAGGERED ON ALTERNATE SIDES.

ALL CONDUIT, BULK ZINC ANODES, JUNCTION BOXES, AND CONNECTIONS SHALL BE PLACED ON THE EAST FACE PILES WEST OF BENT 7 AND THE WEST FACE EAST OF BENT 7.

LOCATION	PILE NUMBER	
	MONITORING	NON-MONITORING
BENT 2	2	5
BENT 3	8	2, 5
BENT 4		9
BENT 9	5	
BENT 10		8

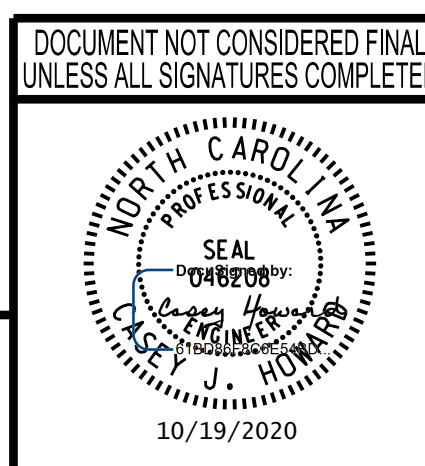
THREE PILE JACKET LOCATIONS WERE CHOSEN FOR MONITORING IN THE CHART ABOVE. THE CATHODIC PROTECTION SPECIALIST IN THE FIELD WILL DETERMINE THE FINAL LOCATIONS AND NUMBER OF THE MONITORING AND NON-MONITORING PILE JACKETS.

PROJECT NO. 15BPR.19
NEW HANOVER COUNTY
 BRIDGE NO. 640021

SHEET 1 OF 3

STATE OF NORTH CAROLINA
 DEPARTMENT OF TRANSPORTATION
 RALEIGH

PILE JACKET
 DETAILS



wsp
 WSP USA Inc.
 434 FAYETTEVILLE STREET
 SUITE 1500
 RALEIGH, NC 27601
 TEL: 1.919.836.4040
 LICENSE NO. F-0165

REVISIONS						SHEET NO. S-53
NO.	BY:	DATE:	NO.	BY:	DATE:	
1			3			TOTAL SHEETS 58
2			4			

10/18/2020 L:\Raleigh Office Projects\Structures\2018\188906-05 NCDOT - 640021 New Hanover Co.05 Plans\1.0 DGN\401.270.15BPR.19_SMU.DT_P.Jacket01_S-53.dgn

DRAWN BY: M.J. OSTRISHKO DATE: JUL 2018
 CHECKED BY: C.J. HOWARD DATE: JUL 2018