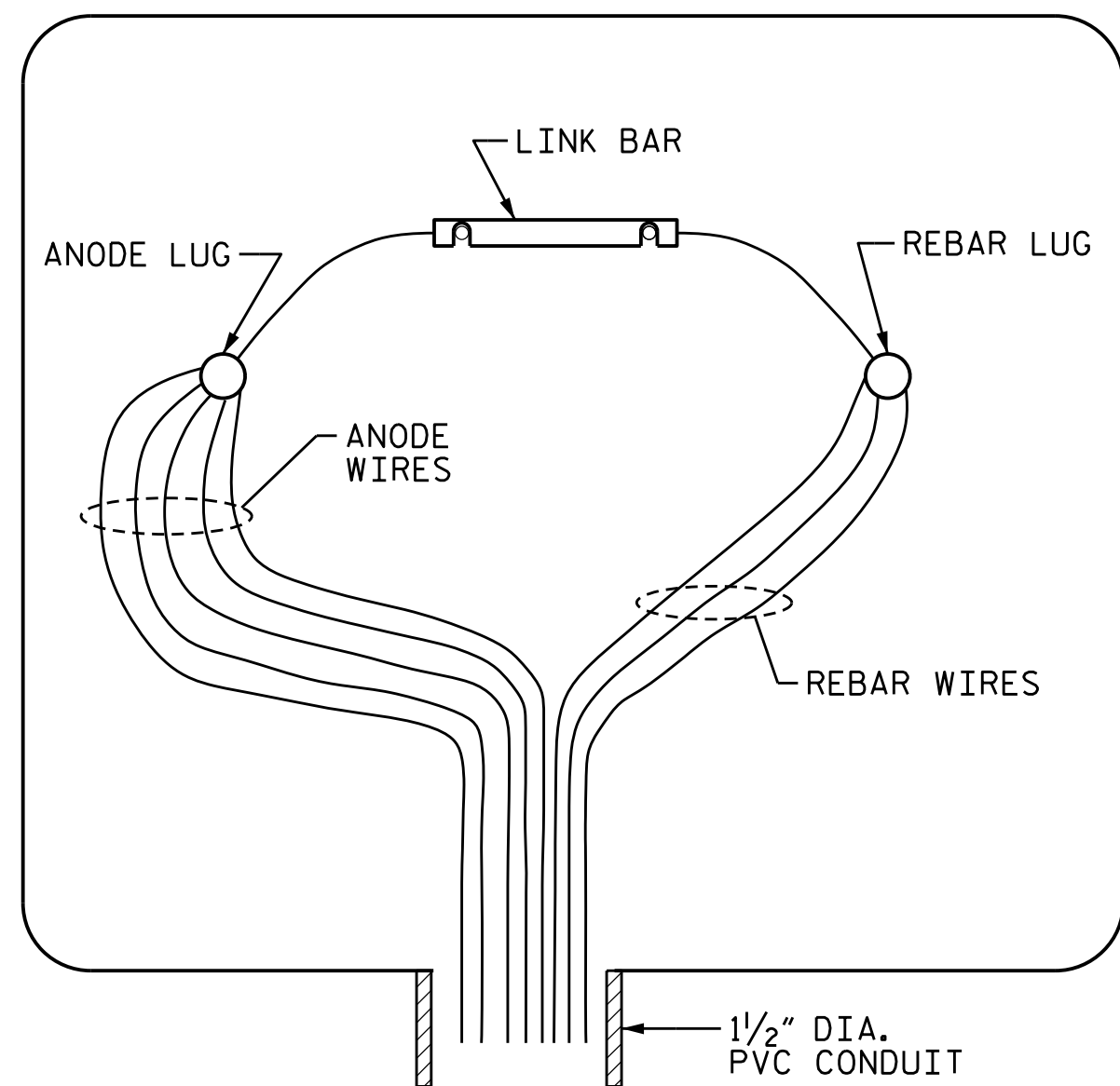
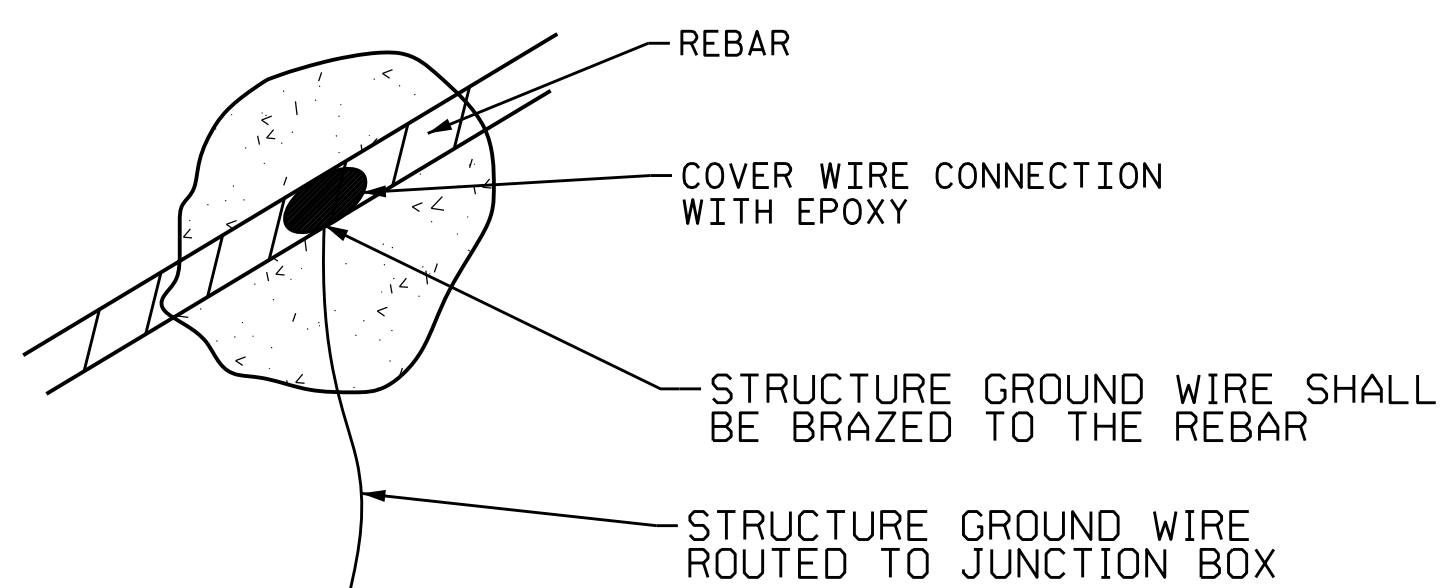


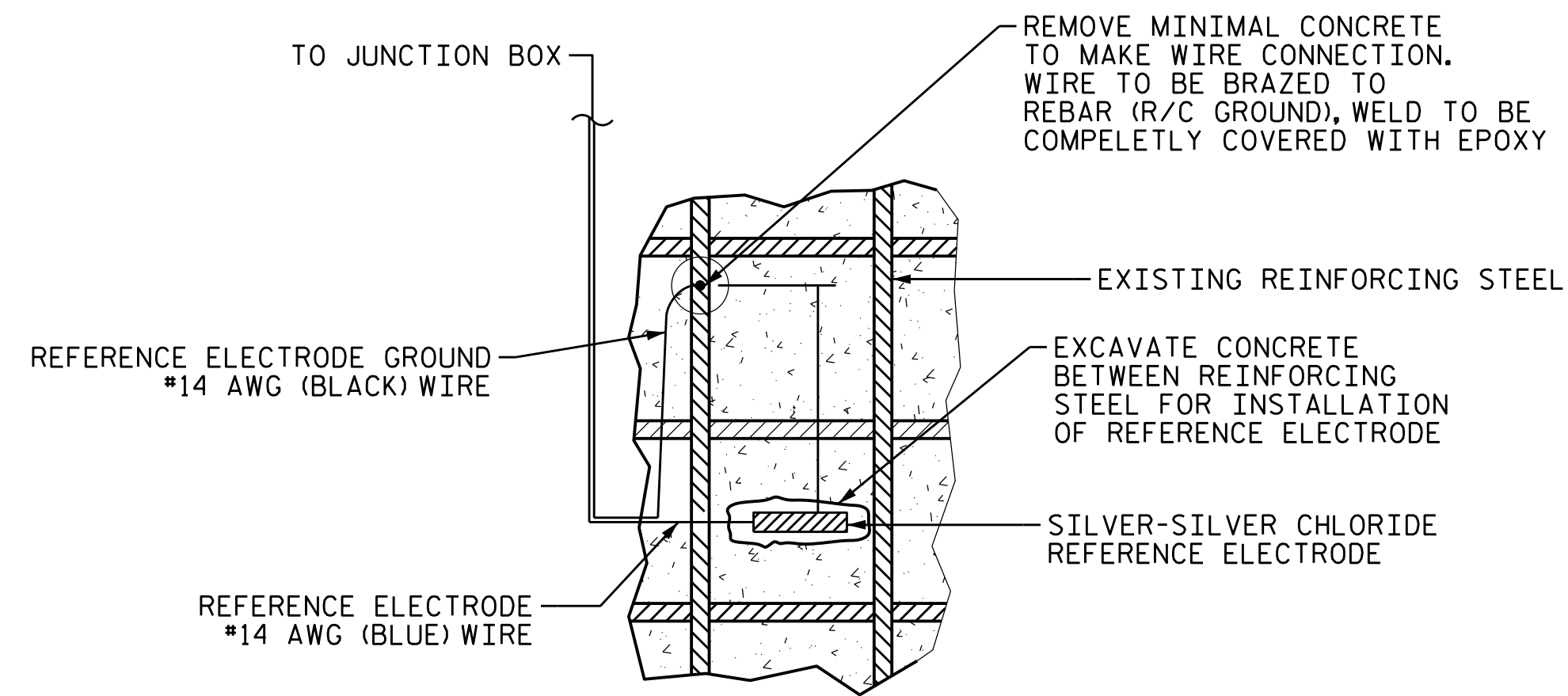
JUNCTION BOX DETAIL - MONITORING (CAPS ONLY)
NTS



JUNCTION BOX DETAIL - NON MONITORING CAPS
NTS



DETAIL A - GROUND CONNECTION DETAIL
NTS



REFERENCE ELECTRODE INSTALLATION DETAIL
NTS

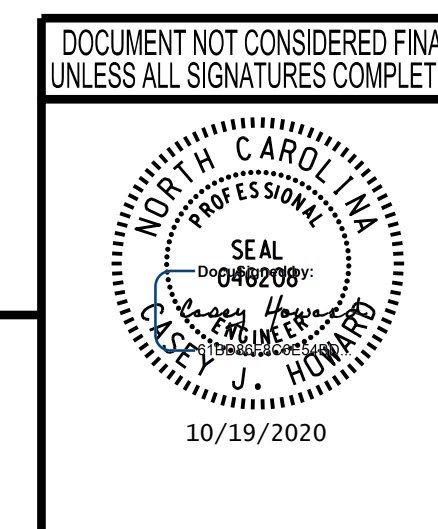
REFERENCE ELECTRODE INSTALLATION NOTES

1. EXISTING REINFORCEMENT SHALL NOT BE EXPOSED, EXCEPT A SMALL AREA WHERE REFERENCE ELECTRODE GROUND WIRE CONNECTION IS MADE. SAWCUTS SHALL BE USED TO PLACE THE REFERENCE ELECTRODE WIRE AND REFERENCE ELECTRODE GROUND WIRE.
2. THE DEPTH OF EXCAVATION SHALL BE SUCH THAT THE REFERENCE ELECTRODE IS SITUATED AT THE SAME DEPTH AS THE REBAR.
3. SILVER-SILVER CHLORIDE REFERENCE ELECTRODES SHALL BE INSTALLED DURING THE CONCRETE REPAIR STAGE.
4. REFERENCE ELECTRODE EXCAVATIONS SHALL BE VISIBLY FREE OF DIRT, GREASE AND OTHER FOREIGN MATERIAL PRIOR TO PLACING THE REFERENCE ELECTRODE AND THE BACK FILL MATERIAL.
5. REFERENCE ELECTRODES SHALL BE IN LOCATIONS DETERMINED BY THE CATHODIC PROTECTION SPECIALIST.

MONITORING:
1 END BENT
1 EXP JOINT
1 NON EXPANSION JOINT
12 NON MONITORING

PROJECT NO. 15BPR.19
NEW HANOVER COUNTY
 BRIDGE NO. 640021

STATE OF NORTH CAROLINA
 DEPARTMENT OF TRANSPORTATION
 RALEIGH
 SUBSTRUCTURE
 CATHODIC PROTECTION
 DETAILS



REVISIONS						SHEET NO.
NO.	BY:	DATE:	NO.	BY:	DATE:	
1			3			TOTAL SHEETS
2			4			58

DRAWN: KE
CHECKED: SV
CHECKED: SM

Siva Corrosion Services, Inc.
 NDT • Corrosion • Materials
 www.SivaCorrosion.com
 1313 Wilmington Pike Suite 2B
 West Chester, PA 19380-19383
 (P) (610) 692-6551

wsp
 WSP USA Inc.
 434 FAYETTEVILLE STREET
 SUITE 1500
 RALEIGH, NC 27601
 TEL: 1.919.836.4040
 LICENSE NO. F-0165

CHECKED BY: C.J. HOWARD DATE: FEB 2018

10/18/2020 L:\Raleigh Office Projects\Structures\2018\188906-05 NCDOT - 640021 New Hanover Co.05 Plans\1.0 DGN\401.260.15BPR.19_SMU.SUB05.S-51.dgn