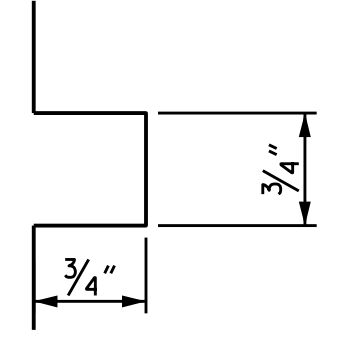
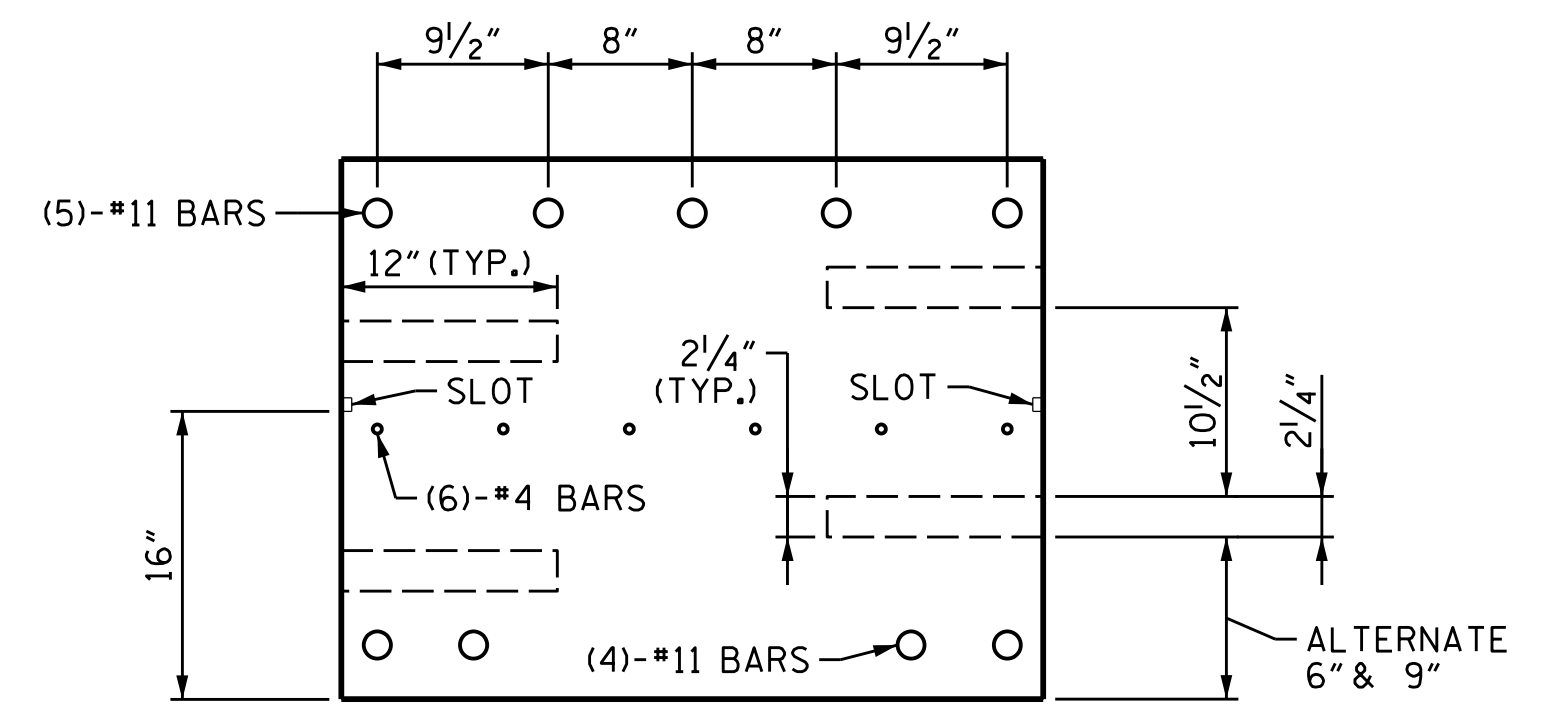


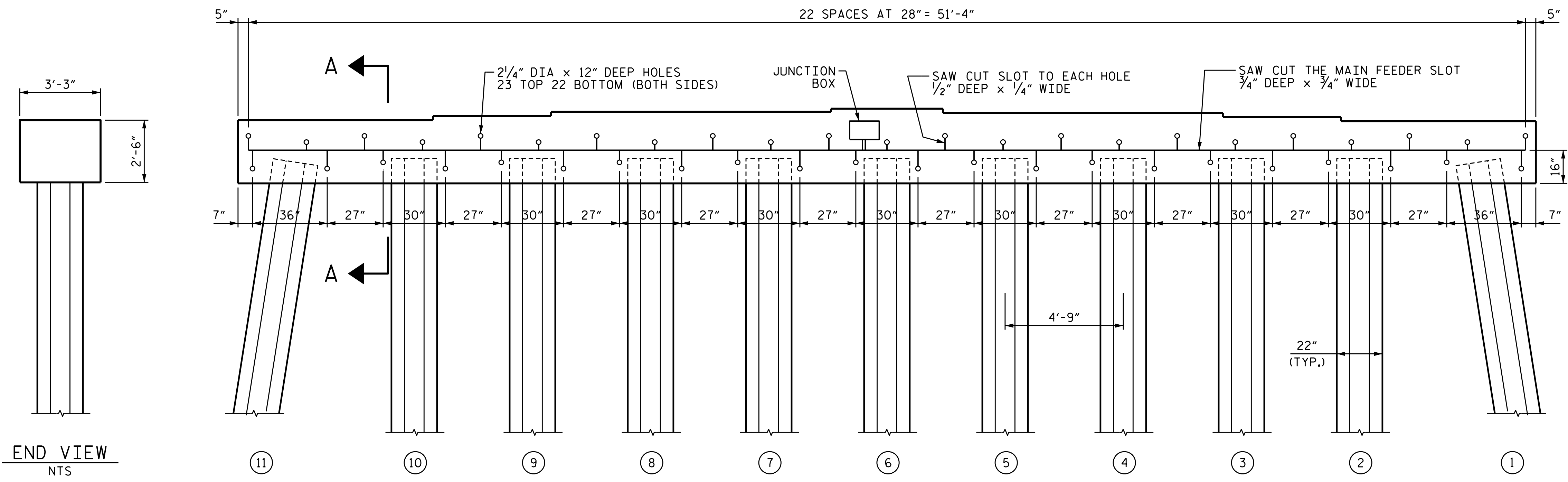
PLAN  
NTS



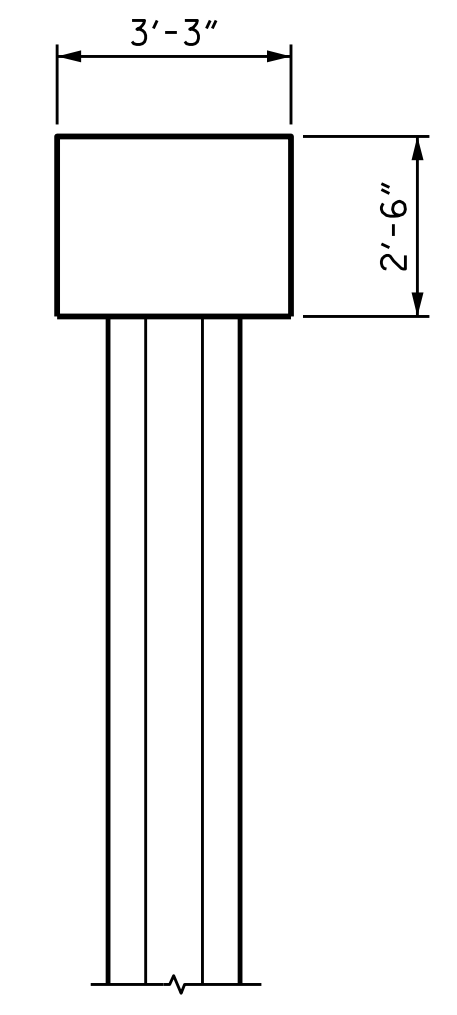
MAIN FEEDER SLOT DETAIL  
NTS



SECTION A-A  
NTS



ELEVATION (BOTH SIDES)  
NTS



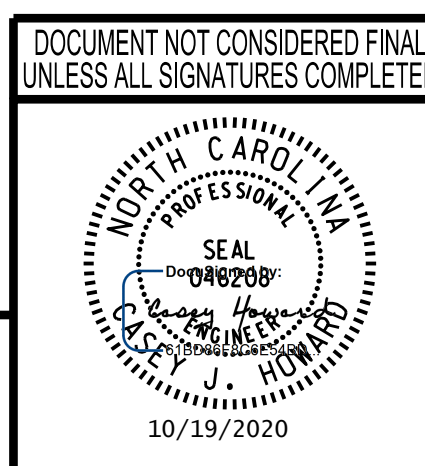
END VIEW  
NTS

- NOTES**
- ONE REFERENCE CELL PER MONITORING CAP.
  - REFERENCE ELECTRODE WIRE IS TO BE ROUTED IN THE MAIN FEEDER SLOT TO THE JUNCTION BOX.
  - REFERENCE CELL (FOR MONITORING CAPS ONLY) AND STRUCTURE CONNECTION LOCATIONS TO BE SELECTED BY CATHODIC PROTECTION SPECIALIST IN THE FIELD, NOT SHOWN FOR CLARITY.
  - ANODE LOCATIONS MAY BE ADJUSTED ± 2" TO AVOID EMBEDDED REINFORCEMENT.
  - MAKE THREE SYSTEM NEGATIVE CONNECTIONS PER FACE (ONE ON EACH END, ONE IN THE MIDDLE). ROUTE WIRES THROUGH MAIN FEEDER SLOT TO THE JUNCTION BOX. BACKFILL THE SLOTS WITH CEMENTITIOUS MORTAR.

PROJECT NO. 15BPR.19  
 NEW HANOVER COUNTY  
 BRIDGE NO. 640021

SHEET 1 OF 2

STATE OF NORTH CAROLINA  
 DEPARTMENT OF TRANSPORTATION  
 RALEIGH  
 SUBSTRUCTURE  
 EXPANSION JOINTS  
 BENTS 1, 4, 7, 10, & 13  
 DETAILS



REVISIONS						SHEET NO.
NO.	BY:	DATE:	NO.	BY:	DATE:	S-49
1			3			TOTAL SHEETS
2			4			58

DRAWN: KE
CHECKED: SV
CHECKED: SM

**Siva Corrosion Services, Inc.**  
 NDT • Corrosion • Materials  
 www.SivaCorrosion.com  
 1313 Wilmington Pike Suite 2B  
 West Chester, PA 19380-19383  
 (P) (610) 692-6551

**wsp**  
 WSP USA Inc.  
 434 FAYETTEVILLE STREET  
 SUITE 1500  
 RALEIGH, NC 27601  
 TEL: 1.919.836.4040  
 LICENSE NO. F-0165

CHECKED BY: C.J. HOWARD DATE: FEB 2018

10/18/2020 L:\Raleigh Office Projects\Structures\2018\188906-05 NCDOT - 640021 New Hanover Co.05 Plans\1.0 DGN\401.250.15BPR.19\_SMU\_SUB03.S-49.dgn