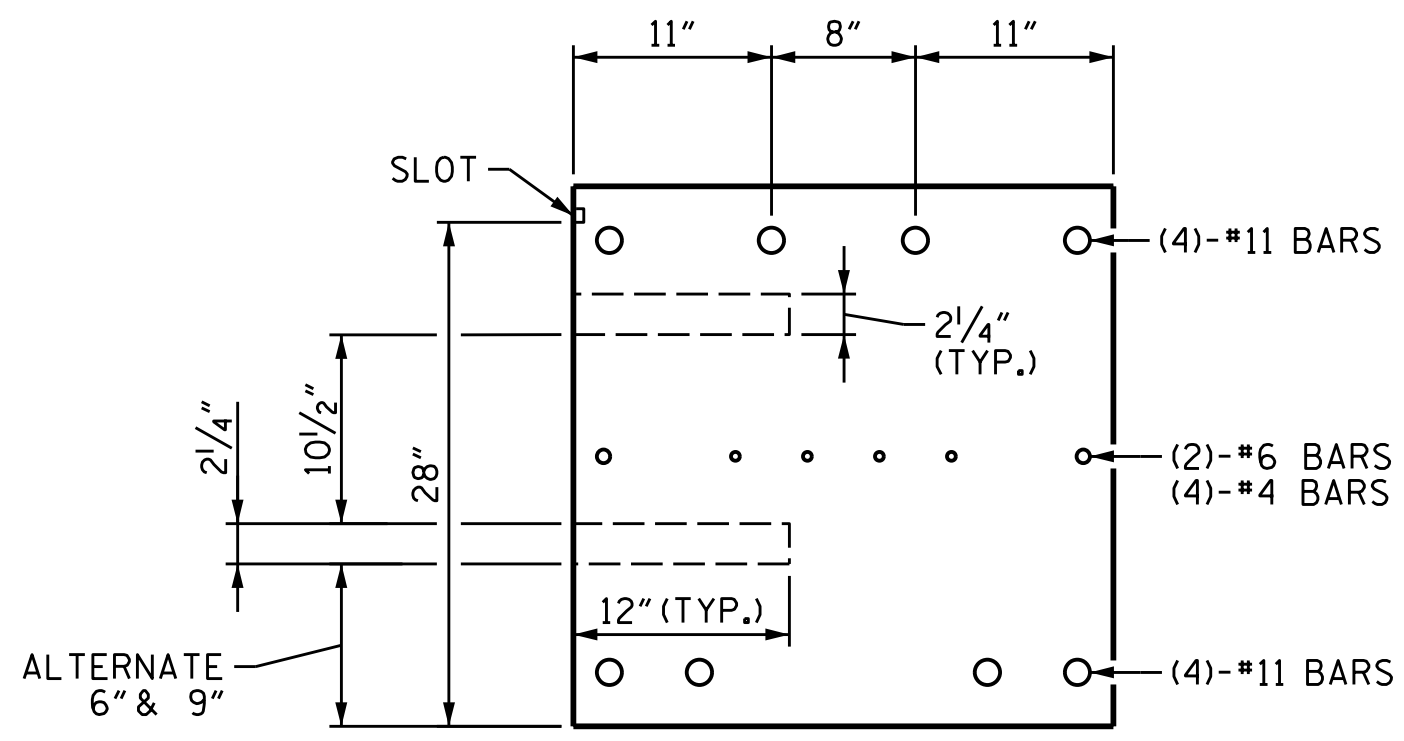
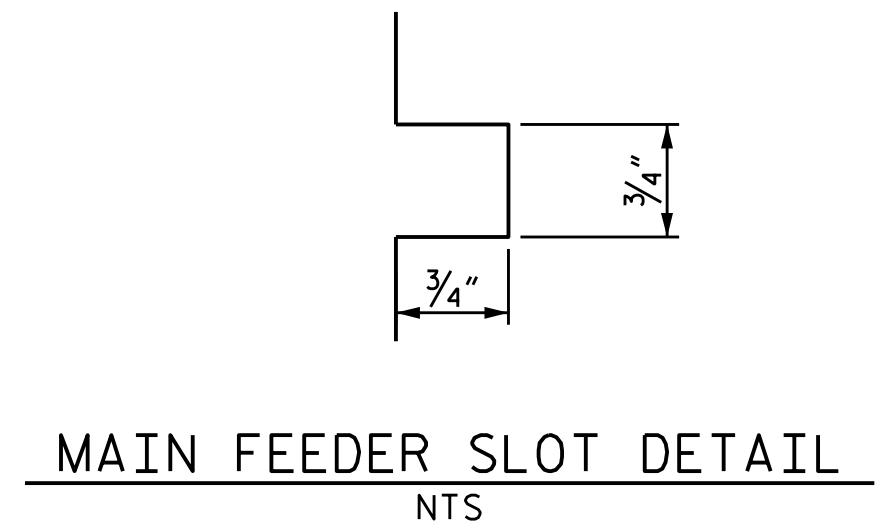


PLAN
NTS



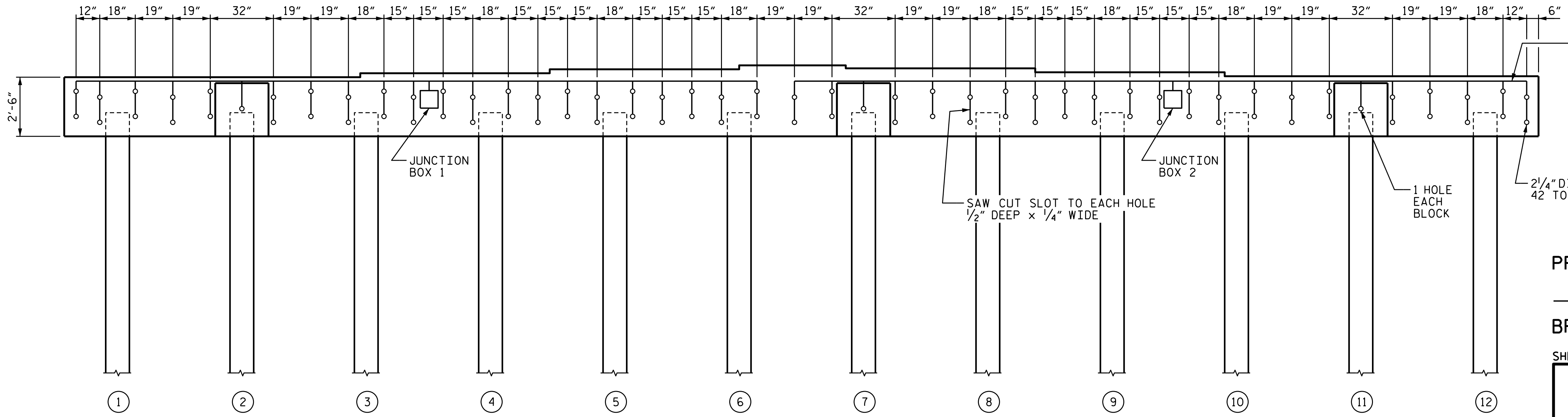
SECTION A-A
NTS



MAIN FEEDER SLOT DETAIL
NTS

NOTES

- ONE REFERENCE CELL PER MONITORING CAP.
- REFERENCE ELECTRODE WIRE IS TO BE ROUTED IN THE MAIN FEEDER SLOT TO THE JUNCTION BOX.
- REFERENCE CELL (FOR MONITORING CAPS ONLY) AND STRUCTURE CONNECTION LOCATIONS TO BE SELECTED BY CATHODIC PROTECTION SPECIALIST IN THE FIELD, NOT SHOWN FOR CLARITY.
- ANODE LOCATIONS MAY BE ADJUSTED ± 2" TO AVOID EMBEDDED REINFORCEMENT.
- MAKE THREE SYSTEM NEGATIVE CONNECTIONS PER HALF OF PIER CAP (ONE ON EACH END, ONE IN THE MIDDLE). ROUTE WIRES THROUGH MAIN FEEDER SLOT TO THE JUNCTION BOX. BACKFILL THE SLOTS WITH CEMENTITIOUS MORTAR.



WEST ELEVATION
NTS

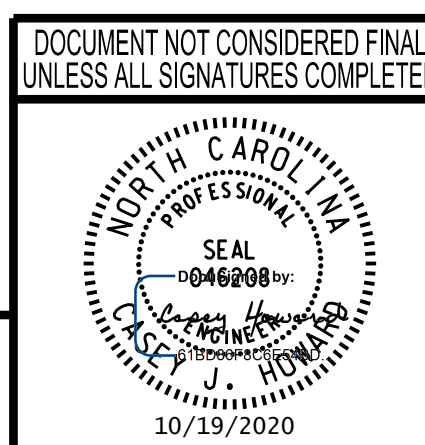
SAW CUT THE MAIN FEEDER SLOT
3/4" DEEP x 3/4" WIDE

2 1/4" DIA x 12" DEEP HOLES
42 TOP 42 BOTTOM

1 HOLE EACH BLOCK

PROJECT NO. 15BPR.19
NEW HANOVER COUNTY
 BRIDGE NO. 640021
 SHEET 2 OF 2

STATE OF NORTH CAROLINA
 DEPARTMENT OF TRANSPORTATION
 RALEIGH
 SUBSTRUCTURE
 END BENT 2
 DETAILS



REVISIONS						SHEET NO.
NO.	BY:	DATE:	NO.	BY:	DATE:	TOTAL SHEETS
1			3			58
2			4			

DRAWN:	KE
CHECKED:	SV
CHECKED:	SM

Siva Corrosion Services, Inc.
 NDT • Corrosion • Materials
 www.SivaCorrosion.com
 1313 Wilmington Pike Suite 2B
 West Chester, PA 19380-19383
 (P) (610) 692-6551

wsp
 WSP USA, Inc.
 434 FAYETTEVILLE STREET
 SUITE 1500
 RALEIGH, NC 27601
 TEL: 1.919.836.4040
 LICENSE NO. F-0165

CHECKED BY: C.J. HOWARD DATE: FEB 2018

10/18/2020 L:\Raleigh Office Projects\Structures\2018\188906-05 NCDOT - 640021 New Hanover Co\05 Plans\1.0 DGN\401.245.15BPR.19_SML_SUB02_S-48.dgn