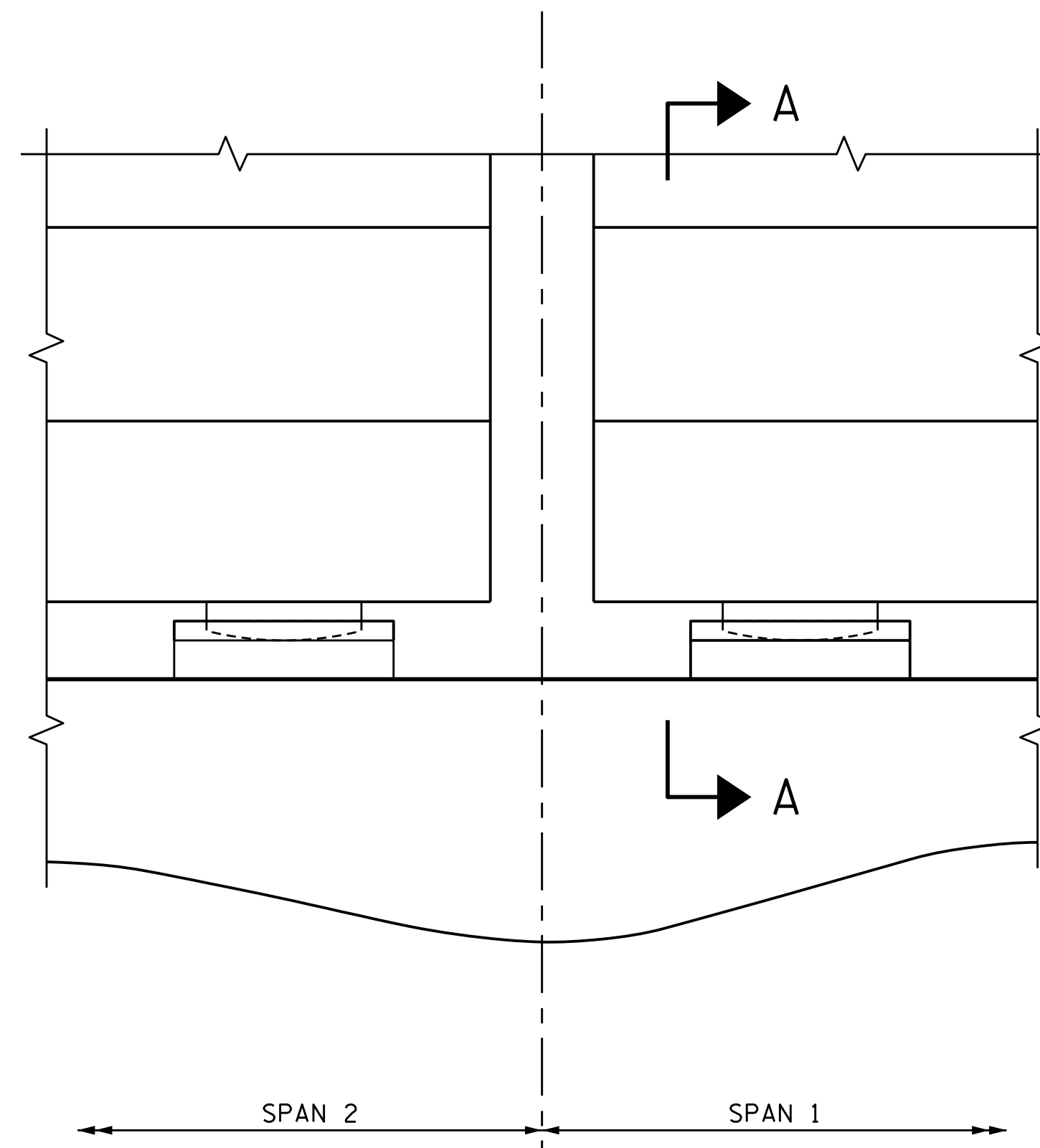


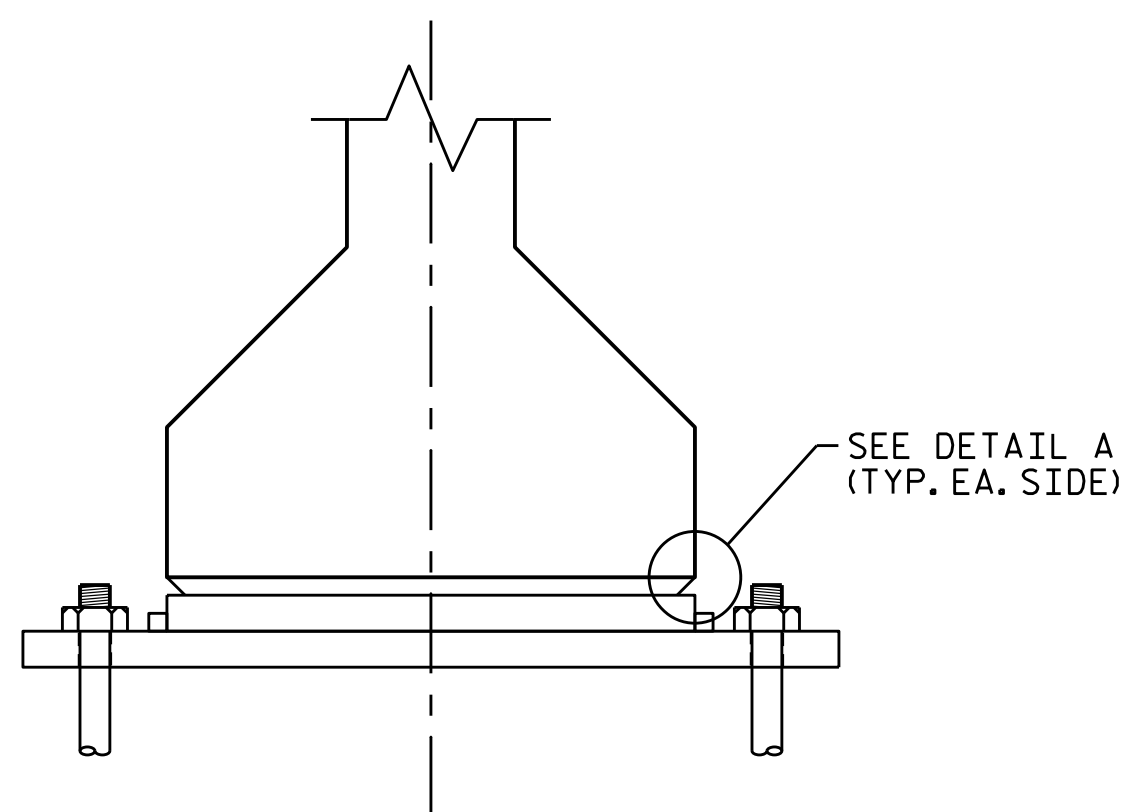
**EXISTING CONDITION**  
SPAN 1 BEAM 4 SOLE PLATE DISPLACEMENT



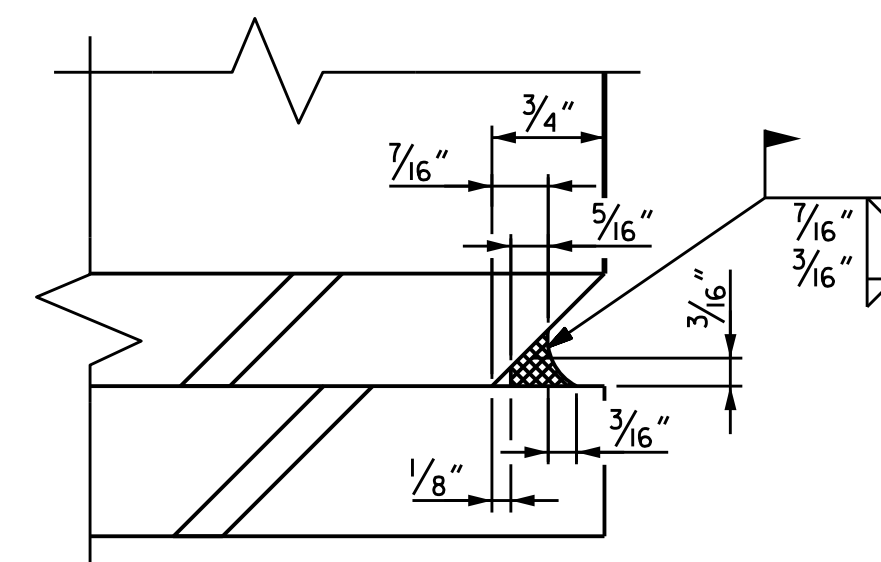
**PROPOSED REPAIR**  
SPAN 1 BEAM 4 SOLE PLATE REPAIRED

**REPAIR SEQUENCE**

- AFTER THE JACKING OF THE GIRDER, PER JACKING PLANS PROVIDED BY OTHERS, GRIND EXISTING WELD TO REMOVE SOLE PLATE FROM EMBEDDED CONNECTOR PLATE.
- PLACE SOLE PLATE IN DESIRED POSITION AND LOCATION.
- CLEAN AND PREP THE AREAS THAT WERE WELDED TO SOLE PLATE SO A CLEAN WELD CAN BE PERFORMED TO REATTACH THE SOLE PLATE TO CONNECTOR PLATE IN THE GIRDER PER DETAIL "A".
- WELD SOLE PLATE TO EMBEDDED PLATE AS INDICATED.
- AFTERWARDS REFER TO THE "CLEANING AND PAINTING EXISTING BEARINGS" SHEET.
- FOR REMOVE AND RESET BEARINGS, SEE SPECIAL PROVISIONS.
- FOR BRIDGE JACKING, SEE SPECIAL PROVISIONS.



**SECTION A-A**



**DETAIL "A"**

**SOLE PLATE REPAIR**

PROJECT NO. 15BPR.19  
NEW HANOVER COUNTY  
 BRIDGE NO. 640021

STATE OF NORTH CAROLINA  
 DEPARTMENT OF TRANSPORTATION  
 RALEIGH

**RESET BEARINGS  
 DETAILS**

REVISIONS						SHEET NO.
NO.	BY:	DATE:	NO.	BY:	DATE:	
1			3			S-26
2			4			TOTAL SHEETS 58

DOCUMENT NOT CONSIDERED FINAL  
 UNLESS ALL SIGNATURES COMPLETED

WSP USA Inc.  
 434 FAYETTEVILLE STREET  
 SUITE 1500  
 RALEIGH, NC 27601  
 TEL: 1.919.836.4040  
 LICENSE NO. F-0165

10/18/2020 L:\Raleigh Office Projects\Structures\2018\188906-05 NCDOT - 640021 New Hanover Co\05 Plans\1.0 DGN\401.135.15BPR.19.SMJ.D1\_SPL01\_S-26.dgn

DRAWN BY: M.J. OSTRISHKO DATE: JUL 2018  
 CHECKED BY: C.J. HOWARD DATE: JUL 2018