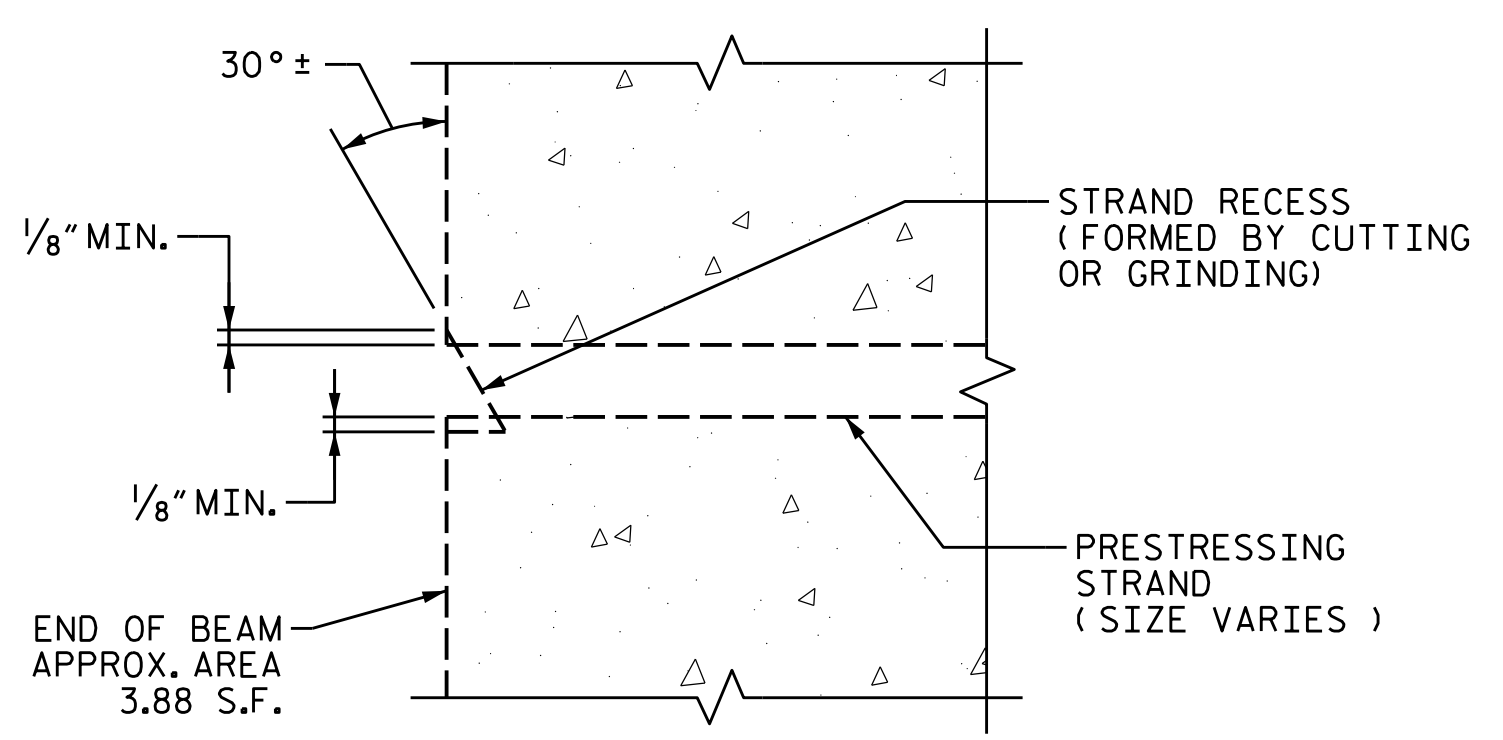


STANDARD PATTERN AT BEAM END

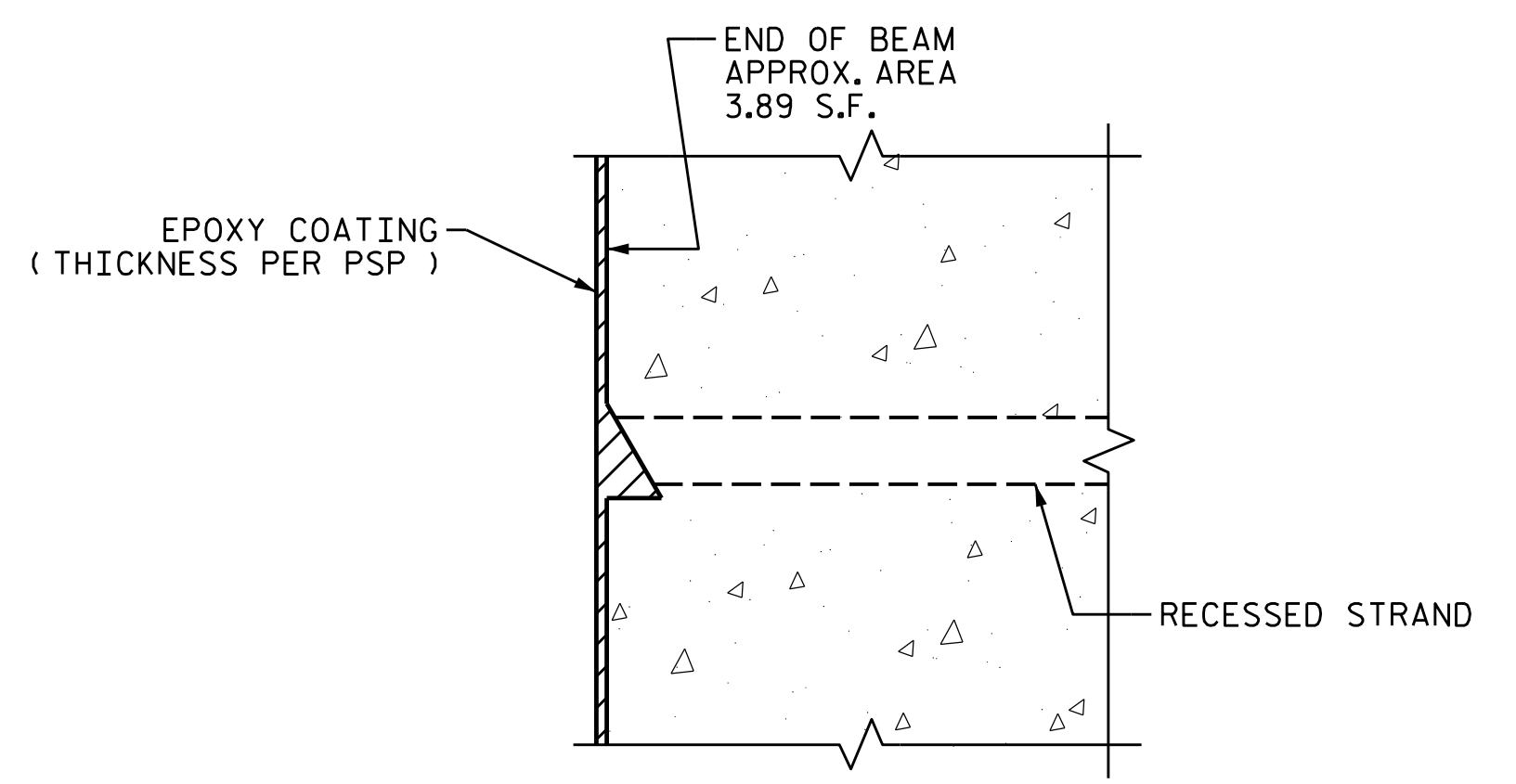
NOTES

- CLEAN AND COAT THE BEAM ENDS IN ACCORDANCE WITH PROJECT SPECIAL PROVISIONS.
- PREPARE BEAM ENDS TO RECEIVE COATING TO A MINIMUM CONCRETE SURFACE PROFILE ( CSP ) OF CSP 3 PER ICRI GUIDELINES 310.2 CLEAN AND ROUGHEN SURFACES TO MAKE ABSORPTIVE BY MECHANICAL MEANS OR ABRASIVE BLASTING.
- UPON COMPLETION OF MECHANICAL/BLASTING SURFACE PREP, WASH THOROUGHLY WITH CLEAN POTABLE WATER AND ALLOW TO DRY. TEST MOISTURE PER PSP PRIOR TO EPOXY APPLICATION.
- APPLY TWO LAYERS OF TYPE 4A EPOXY PER SECTION 1081.
- ALL BLAST MEDIA AND DEBRIS SHALL BE CONTAINED, REMOVED FROM THE SITE AND DISPOSED OF OFF-SITE IN ACCORDANCE WITH THE STANDARD SPECIFICATIONS.
- FOR BEAM END EPOXY PROTECTIVE COATING, SEE SPECIAL PROVISIONS.
- FOR CONTAINMENT AND POLLUTION CONTROL, SEE SPECIAL PROVISIONS.

BEAM END EPOXY PROTECTIVE COATING QUANTITIES		
	PER BENT SF	TOTAL SF
BENTS 1, 4, 7, 10 & 13 (14 BEAM ENDS PER BENT)	54.5	272.5



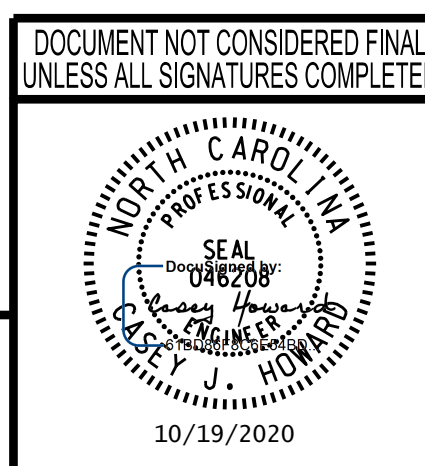
TYPICAL STRAND SECTION X-X SHOWING CUT STRAND RECESS LIMITS



TYPICAL STRAND SECTION X-X AFTER EPOXY PROTECTIVE COATING

PROJECT NO. 15BPR.19  
NEW HANOVER COUNTY  
 BRIDGE NO. 640021

STATE OF NORTH CAROLINA  
 DEPARTMENT OF TRANSPORTATION  
 RALEIGH  
**BEAM END COATING DETAILS**



**wsp**  
 WSP USA Inc.  
 434 FAYETTEVILLE STREET  
 SUITE 1500  
 RALEIGH, NC 27601  
 TEL: 1.919.836.4040  
 LICENSE NO. F-0165

REVISIONS						SHEET NO.
NO.	BY:	DATE:	NO.	BY:	DATE:	S-25
1			3			TOTAL SHEETS
2			4			58

10/18/2020 L:\Raleigh Office Projects\Structures\2018\188906-05 NCDOT - 640021 New Hanover Co.05 Plans\1.0 DGN\401.130\_15BPR.19\_SML.D1\_BCD01.S-25.dgn

DRAWN BY: M.J. OSTRISHKO DATE: JUL 2018  
 CHECKED BY: C.J. HOWARD DATE: JUL 2018